

AVON

CAMPAIGN 18
AVON.CA

special
gift!

(with qualifying
purchase)

DETAILS
INSIDE



GET THE
FALL FEELS

NEW! *fmg* Lip Butter

NEW

LET'S GET COZY & COLOURFUL

As hot summer days turn into crisp fall nights, it's time to transition your makeup wardrobe for the season. Cozy textures and colourful combos are welcome additions as we ease into harvest hues.



Model is wearing fmg Lip Butter in Love Affair sold on page 5 and Glimmer Nail Lacquer in Black Hole Burgundy sold on page 50.

INTRODUCING
fmg LOVE
LIP BUTTER
(sold on page 5)



FREE

BEAUTY ORGANIZER
with every 45.00 purchase
from pages 5-17
\$29 VALUE
limited quantities

fmg Beauty Organizer
Clear plastic holder with front
pull drawer. 18 cm L x
10 cm W x 5 cm H. Plastic.

In case of unforeseen demand, Avon reserves the right to substitute with a product of equal or greater value.



Comes empty.



WARM & FUZZIES






Fall must have: **BUTTERY SOFT LIPS** to go with your **COZY AUTUMN STYLE.**

Model is wearing Love Affair.

NEW



INFUSED with **NOURISHING** cupuacu seed butter, mango extract, apricot kernel and olive fruit oils

- Love Affair 225-989-5 
- Pucker Up 225-989-0 
- Tease 225-989-1 
- Secret Crush 225-989-2 
- Rendezvous 225-989-3 
- Flirtatious 225-989-4 

fmg LOVE Lip Butter
 Luscious lip butter, high shine gloss and sheer colour all in one!
 Ultra-creamy formula, leaves lips feeling soft and kissable with intense moisture and shine.
 Non-sticky. Buildable coverage.
 Click pen applicator delivers the right amount of colour.
 Vanilla scented. Paraben/sulfate/phtalate-free. 2.7 g
 reg. 24.00
20.99

fmg Beauty Organizer **FREE**
 Details page 2. Contents not included.



TPSY Snatched Brow & Freckle Marker

Ultrafine felt tip sculpts, fills and shapes brows and enhances your look to perfection. Precision point marker. Long-wearing formula. Paraben/talc-free. 0.5 g

reg. 22.00

16.99

- Irish Cream 225-959-5
- Spiked Macchiato 225-959-6
- Espresso Martini 225-959-7

fmg Colors of LOVE

Hi-Brow Tinted Brow Gel

Amp up brows with a sweep of tinted gel for a full, fluffy look. Water-resistant, smudge- and flake-proof formula fills, grooms and shapes for 24-hour wear.

With heart-shaped fibres, clay and vitamin E. Soft matte finish. Tapered micro-brush. 3.3 ml

reg. 24.00

18.99

- Blonde 223-284-4
- Soft Brown 223-284-5
- Medium Brown 223-284-6
- Brown Black 223-284-7

fmg Colors of LOVE Hi-Brow Sculpting Brow Gel

Universal **clear matte shade** for a professional sculpted look. Flexible, flake-proof formula. With moisturizing aloe and nourishing hyaluronic acid.

Tapered micro-brush ensures precise application. Paraben/phthalate/fragrance-free. 3.3 ml

224-555-6

reg. 24.00

18.99

fmg Beauty Organizer

Details page 2. Contents not included.

FREE



FRINGE BENEFITS

Fall in love with face-framing **FLUFFY BROWS** and **LUSH LASHES.**

Model is wearing TPSY Snatched Brow & Freckle Marker in Spiked Macchiato, fmg Colors of LOVE Hi-Brow Tinted Brow Gel in Brown Black and LOVE at 1st Lash Mascara.

fmg LOVE at 1st Lash Mascara

Volumizing and lengthening heart-shaped fibres plus intense black pigments. 9 ml

Blackest Black

225-679-9

reg. 23.00

LIMITED TIME OFFER
12.99



Avon Pro Eye Liners
Precision pencil liners with hours of wear! Long lasting formulas with castor seed oil. Won't tug or pull. 0.9 g reg. 9.00
4.99



Black
226-034-4

Dark Brown
226-035-0

Light Beige
226-035-2

Sky Blue
226-035-1

White
226-035-3



WEAR SOMETHING
FAUX & FOXY

Get this cat-eye look with **PRO LINER** and **COLOURFUL EYESHADOW.**

Model is wearing fmg Glimmer Eyeshadow Quad in Tigress, Eyeliner in Dark Brown and Blackest Black and LOVE at 1st Lash Mascara.

M M M M MATTE Icon 225-661-0	M M M M MATTE Tigress 225-660-9
M M M M MATTE Bombshell 225-660-7	M M M M MATTE Calypso 225-660-8
S S S M Goddess 223-183-5	SA M S S Siren 223-183-7
M S SA M Idol 223-183-4	S S S M TOP-SELLER Vixen 223-183-6
S S S S Mistress 223-183-0	S S M SA Minx 223-183-3
S M S SA Darling 223-181-9	M M M S Muse 223-181-8
S S S SA Temptress 223-183-1	S M S M Maven 223-183-2



fmg Glimmer Eyeshadow Quad

Colour-coordinated shades. Creamy soft powder formula hugs lids with rich colour for all-day wear, without the fallout. Paraben/fragrance-free. Available in Multi or All Matte. 6 g total.
reg. 20.00

16.99

LOVE at 1st Lash Waterproof Mascara

Love Waterproof Complex™ with lash strengthening Lashrez, olive oil and vitamin E. Lash-hugging heart-, flower- and cylindrical-shaped lengthening fibres lock onto lashes. Transfer-resistant. Paraben/sulfate-free. 8.5 ml

Blackest Black
222-014-9
reg. 23.00

16.99



fmg Beauty Organizer **FREE**
Details page 2. Contents not included.





Macadamia

**fmg Cashmere
24 Hour Foundation**

Full, flexible coverage with a matte finish. Blurs pores and fine lines for a smoother complexion. With antioxidant botanical extracts. Ideal for all skin types. Vegan. 30 ml
reg. 45.00

35.00

fmg Beauty Organizer

Details page 2. Contents not included.

FREE



FOUNDATION

Cannoli (W) 223-323-7	Nougat (W) 223-323-8	Meringue (W) 223-323-9	Marshmallow (N) 223-324-2	
Macadamia (W) 223-324-6	Ganache (WO) 223-324-8	Cappuccino (N) 223-324-9	Chai (WO) 223-324-7	Toasty (N) 223-325-1
Praline (N) 223-325-3	Tiramisu (W) 223-325-0	Soufflé (N) 223-325-2	Muffin (W) 223-325-5	Gingerbread (C) 223-325-6
Pudding (N) 223-325-7	Amaretto (N) 223-325-8	Latte (W) 223-326-0	Brownie (WO) 223-325-9	Hazelnut (W) 223-326-1
Cognac (W) 223-326-2	Pecan (N) 223-326-3	Java (W) 223-326-4	Clove (N) 223-326-5	Truffle (C) 223-326-6

Available in: Cool (C), Neutral (N), Warm (W) and Warm Olive (WO) undertones.

CONCEALER

Sugar (W) 223-391-1	Mochi (N) 223-391-2	Parfait (W) 223-391-4	Tart (WO) 223-391-6	Butterscotch (W) 223-391-7
Waffle (W) 223-391-8	Biscuit (WO) 223-391-9	Tres Leches (N) 223-392-0	Toffee (W) 223-392-1	Cupcake (N) 223-392-2

Featured shades:
fmg Cashmere 24 Hour
Concealer in Tres
Leches and Foundation
in Toasty.



**fmg Cashmere
24 Hour Concealer**
Corrects dark circles and imperfections. Creamy lightweight texture. Soft focus matte finish. With antioxidant botanical extract. Vegan. 6 ml
reg. 31.00

**LIMITED
TIME OFFER
17.99**



Tres Leches (N)



DRESS IN LAYERS

Give the apples of your cheeks a crisp **POP OF COLOUR** and a **HINT OF HIGHLIGHT**.

Model is wearing fmg Glimmer Be Blushed Cheek Color in Tropical Peach, Powder Blush in Petal Pink, Illuminator in Rosé, and Glimmer Nail Lacquer in Black Hole Burgundy sold on page 50.

fmg Glimmer Be Blushed Cheek Color

Creamy formula for lips and cheeks. Buildable coverage. Soft dewy finish. With skin-nourishing vitamin E for antioxidant benefits. Paraben/phthalate/fragrance-free. 4 g reg. 19.00

12.99 or...

-  Blushing Nude 225-062-7
-  Golden Rose 225-062-3
-  Tropical Peach 225-063-8
-  Crushed Berry 225-063-6
-  Icy Petal 225-062-5

-  Pink Passion 224-958-8
-  Petal Pink 224-958-7
-  Cranberry Crush 224-958-6

fmg Glimmer Powder Blush

Richly pigmented, silky pressed powder hugs cheeks. Weightless formula with ultrafine pearl for added dimension and vivid payoff blends effortlessly. Paraben/phthalate/fragrance-free. 8 g reg. 20.00

14.99 or...

ANY 2 FOR 24.00
PAGE 13
To get the 2 FOR price, order in multiples of 2.

-  Rosé 225-930-2
-  Prosecco 225-930-1

fmg Glimmer Powder Illuminator

Finely milled powder creates a multi-dimensional luminous glow instantly. Lightweight buildable formula with vitamin E builds and blends effortlessly, providing a naturally radiant finish. Paraben/phthalate/fragrance-free. 10 g reg. 20.00

14.99 or...

fmg Beauty Organizer **FREE**
Details page 2. Contents not included.





Your mani will be worthy of a selfie with **CRIMSON RED** nail polish in a high gloss finish.

BEST OF FALL

Model is wearing Crimson Red.

	
Green 225-866-4	Crimson Red 225-867-3
	
Light Mauve 225-866-9	Coral Pink 225-867-2
	
Purple 225-866-6	Light Blue* 225-866-5
	
Neutral Pink 225-867-0	Beige 225-866-8

*While supplies last.

Pro Nail Polish
Long-lasting nail polish with a high gloss finish. Goes on streak-free for easy application. Vegan. 12.5 ml reg. 12.00

LIMITED TIME OFFER 7.99

fmg Beauty Organizer FREE
Details page 2. Contents not included.





SLIP INTO VELVET

Transition lips to **DARK RICH SHADES** in a creamy **LUSH TEXTURE**.

Model is wearing fmg Glimmer Satin Lipstick in Tulip.



ANY 2 FOR 22.00
PAGE 17
To get the 2 FOR price, order in multiples of 2.

 Stellar 225-661-3	 Honeyflower 225-661-2	 Windstorm 222-947-3	 Cyclone 222-947-6	 Sierra Sunset 222-947-7
 Luna 222-947-8	 Celestial 222-948-0	 Wild Cherry 224-849-8	 Constellation (Shimmer) 224-850-0	 TOP-SELLER Plum Blossom 224-850-2
 Equinox 224-850-4	 TOP-SELLER Rose Angel 222-948-6	 Desert Moon 224-850-3	 Eclipse 224-849-6	 Aster 224-849-7
 Tulip 224-849-9	 Aurora 225-661-4	 Blaze 222-948-3	 Poppy 222-948-5	 Wildrose 222-948-9
 Songbird 222-948-4	 Hibiscus 222-948-7	 Wildflower 222-948-8	 Violet Night 222-949-0	 TOP-SELLER Dahlia 225-661-1
				 Morning Glory 224-850-1
				 Twilight 224-850-5

fmg Glimmer Satin Lipstick
Lightweight, smooth and creamy formula infused with pomegranate extract to help provide antioxidant benefits. Soft satin finish. 3 g
16.00 or...

fmg Beauty Organizer FREE
Details page 2. Contents not included.



STUDIO
1886

From a brisk breeze to the soft touch of satin, colourful leaves to blooming burgundy prints... Autumn has arrived in style.

signs of fall

Smocked waistband, 3/4 sleeves with elastic cuff and zipper on centre back

Model is wearing Western Booties sold on page 26.

Victorian-inspired lacy luxe

NEW



Lace appliqué, button closure on back neck and long balloon-style sleeves

NEW

❖ Satin Printed Dress

Multi-coloured floral printed purple dress with v-neck, button detail down front and slit on centre front hem. Lined. Polyester/spandex with polyester lining. Centre back length: 129 cm on medium; 132 cm on 1X. Machine wash, line dry.

XS (0-2)	226-221-8	1X (18W-20W)	226-222-3
S (4-6)	226-221-9	2X (22W-24W)	226-222-4
M (8-10)	226-222-0	3X (26W-28W)	226-222-5
L (12-14)	226-222-1		69.99
XL (16)	226-222-2		64.99

NEW

❖ Lace Appliqué Blouse

Blue high-neck blouse with lace appliqué. Viscose/spandex. Centre back length: 64 cm on medium; 67 cm on 1X. Machine wash, dry flat.

XS (0-2)	226-217-1	1X (18W-20W)	226-217-7
S (4-6)	226-217-2	2X (22W-24W)	226-217-8
M (8-10)	226-217-3	3X (26W-28W)	226-217-9
L (12-14)	226-217-4		84.99
XL (16)	226-217-5		79.99

NEW

A. ❖ Faux Leather Blazer

Black blazer with peak lapel and one-button closure on front, long sleeves with button detail. Lined. Polyester/spandex with polyurethane coating/polyester lining. Centre back length: 71 cm on all sizes. Dry clean only.

XS (0-2) **226-219-9** 1X (18W-20W) **226-220-7**
S (4-6) **226-220-0** 2X (22W-24W) **226-220-8**
M (8-10) **226-220-1** 3X (26W-28W) **226-220-9**
L (12-14) **226-220-2** **114.99**
XL (16) **226-220-3**
109.99

NEW

B. ❖ 2-Pack Cutout Tops

Includes solid brown and fuchsia long-sleeve tops with cutout detail on chest and right shoulder. Polyester/spandex. Centre back length: 64 on medium; 69 cm on 1X. Machine wash, dry flat.

XS (0-2) **226-214-6** 1X (18W-20W) **226-215-1**
S (4-6) **226-214-7** 2X (22W-24W) **226-215-2**
M (8-10) **226-214-8** 3X (26W-28W) **226-215-3**
L (12-14) **226-214-9** **74.99 the pack**
XL (16) **226-215-0** **79.99 the pack**



PACK OF 2

B

Slit pockets and back vent

A



Faux suede pants

sleek & chic combos

Model is wearing Chain Loafers sold on page 27.

Elegant fashion with a pop of print

NEW



Small ruffles and tie detail on neckline and smocking at shoulders

D

NEW

C. ❖ Slim Faux Suede Pants

Black slim-fitting faux suede pants with elastic waist. Polyester/spandex. Inseam: 72 cm on all sizes. Hand wash, line dry.

XS (0-2) **226-221-0** 1X (18W-20W) **226-221-5**
S (4-6) **226-221-1** 2X (22W-24W) **226-221-6**
M (8-10) **226-221-2** 3X (26W-28W) **226-221-7**
L (12-14) **226-221-3** **74.99**
XL (16) **226-221-4**
69.99

NEW

D. ❖ Satin Smocked Blouse

Floral printed burgundy blouse with split v-neck, and long sleeves with elastic cuffs. Polyester/spandex. Centre back length: 65 cm on medium; 69 cm on 1X. Machine wash, line dry.

XS (0-2) **226-216-2** 1X (18W-20W) **226-216-7**
S (4-6) **226-216-3** 2X (22W-24W) **226-216-8**
M (8-10) **226-216-4** 3X (26W-28W) **226-216-9**
L (12-14) **226-216-5** **74.99**
XL (16) **226-216-6**
69.99

a love-to-live in layer

NEW

❖ **Open Front Plaid Cardigan**

Blue plaid long cardigan with open front and 3/4 sleeves. Polyester/spandex. Centre back length: 94 cm on medium; 99 cm on 1X. Machine wash, line dry.

XS (0-2)	226-219-1	1X (18W-20W)
S (4-6)	226-219-2	226-219-6
M (8-10)	226-219-3	2X (22W-24W)
L (12-14)	226-219-4	226-219-7
XL (16)	226-219-5	3X (26W-28W)
	79.99	226-219-8
		84.99

NEW

❖ **Slim Faux Suede Pants**

Black slim-fitting faux suede pants with elastic waist. Polyester/spandex. Inseam: 72 cm on all sizes. Hand wash, line dry.

XS (0-2)	226-221-0	1X (18W-20W)
S (4-6)	226-221-1	226-221-5
M (8-10)	226-221-2	2X (22W-24W)
L (12-14)	226-221-3	226-221-6
XL (16)	226-221-4	3X (26W-28W)
	69.99	226-221-7
		74.99

FASHION SIZE CHART			
SIZE	BUST	WAIST	HIP
XS 0/2	80 - 83 CM	62 - 65 CM	84 - 86 CM
S 4/6	85 - 89 CM	67 - 71 CM	90 - 94 CM
M 8/10	93 - 97 CM	75 - 79 CM	98 - 102 CM
L 12/14	100 - 104 CM	83 - 86 CM	105 - 109 CM
XL 16	108 - 112 CM	90 - 94 CM	113 - 117 CM
1X 18W/20W	118 - 123 CM	99 - 104 CM	122 - 127 CM
2X 22W/24W	128 - 133 CM	109 - 114 CM	132 - 137 CM
3X 26W/28W	138 - 144 CM	119 - 124 CM	142 - 147 CM

Visit avon.ca/fitguide for additional size and fit information



Open front with 3/4 length sleeves

Faux suede pants

Model is wearing Chain Loafers sold on page 27 and 4-Pack Crew Neck Tees in burgundy sold on page 25.

A fit so easy, for when it's breezy

NEW



Chest pockets and long sleeves with tab detail

NEW

❖ **Button Front Top**

Grey button-front top with functional button placket, chest pockets and long sleeves with tab detail. Polyester/rayon/spandex. Centre back length: 66 cm on medium; 71 cm on 1X. Machine wash, dry flat.

XS (0-2)	226-218-0	1X (18W-20W)	226-218-5
S (4-6)	226-218-1	2X (22W-24W)	226-218-6
M (8-10)	226-218-2	3X (26W-28W)	226-218-7
L (12-14)	226-218-3		64.99
XL (16)	226-218-4		
	59.99		

the season's signature shade

NEW

❖ 2-Piece Wide-Leg Pant Set

Burgundy set includes long sleeve collared top with contrasting satin button placket and pocket, wide leg pants with elastic waistband, side seam pockets and satin trim down seams. Polyester/spandex. Centre back length: 64 cm on medium; 69 cm on 1X. Inseam: 64 cm on all sizes. Machine wash, line dry.

XS (0-2) 226-215-4	1X (18W-20W) 226-215-9
S (4-6) 226-215-5	2X (22W-24W) 226-216-0
M (8-10) 226-215-6	3X (26W-28W) 226-216-1
L (12-14) 226-215-7	94.99 the set
XL (16) 226-215-8	
89.99 the set	



Contrasting satin collar

Satin pocket

2-PIECE SET

Side seam pockets

Wide leg pants with comfort elastic waistband

Contrasting satin trim down the sides

Model is wearing Metallic Slide Sneakers sold on page 27.

Colour-changing leaves...and tees

NEW



4-PACK TEES

Slight curved hem line

NEW

❖ 4-Pack Crew Neck Tees

Includes solid burgundy, fuchsia, grey, and blue printed. Centre back length: 64 cm on medium; 69 cm on 1X. Machine wash, dry flat.

XS (0-2) 226-213-8	1X (18W-20W) 226-214-3
S (4-6) 226-213-9	2X (22W-24W) 226-214-4
M (8-10) 226-214-0	3X (26W-28W) 226-214-5
L (12-14) 226-214-1	71.99 the pack
XL (16) 226-214-2	
66.99 the pack	

autumn stroll

Classics turn over a new leaf with western flair, chunky chains and metallic touches.



NEW

❖ **Western Booties**

Taupe faux suede western-style booties with 7 cm block heel and elastic gore on sides for easy on/off. Man-made materials. Half sizes, order one size up.
79.99

6M 226-223-8
7M 226-223-9
8M 226-224-0
9M 226-224-1
10M 226-224-2
11M 226-224-3

NEW



NEW

❖ **Metallic Sneaker Slides**

Metallic taupe slip-on sneaker slides with 3 cm platform, elastic gore on uppers for easy on/off and cushion insoles. Man-made materials. Half sizes, order one size up.

6M 226-223-2 9M 226-223-5
7M 226-223-3 10M 226-223-6
8M 226-223-4 11M 226-223-7

64.99

Go-to style staples...simply slip on and go!



NEW

❖ **Chain Loafer with Charms**

Black loafers with 3 cm block heels, goldtone chain and charm detail, and wavy cushion insoles. Half sizes, order one size up.

6M 226-222-6 9M 226-222-9
7M 226-222-7 10M 226-223-0
8M 226-222-8 11M 226-223-1

74.99



Model is wearing fmg CathyCat Brow Pencil in Black Brown.



Blonde 223-415-9



Light Brown 223-416-0



Brown 223-416-1



Ash Brown 223-416-3



Dark Brown 223-416-2



Black Brown 223-416-4



Spoolie grooms brows to perfection

CATHYCAT UPDATE YOUR BROWSER



Blonde

Light Brown

Brown

Ash Brown

Dark Brown

Black Brown

fmg CathyCat High Arch Precision Brow Pencil

Long-wearing cream-to-powder pencil glides on smoothly, creating a well-defined look. Waterproof formula stays in place without budging or smudging for perfectly gorgeous brows. 0.5 g

21.99 or...

ONLY 7.99
WITH EVERY 10.00 PURCHASE FROM THIS BROCHURE
(excluding pages 28-29)



DRAW
THE LINE
WITH
LINERS

EYELINER DIAMOND

					
Olive 223-258-2	Sterling 223-258-3	Black Ice 223-258-0	Brown Sugar 223-257-8	Sugar Plum 223-258-1	Purple Rain 223-258-4
					
Twilight Sparkle 223-257-7	Teal Sparkle 223-257-9	Smoky Diamond 223-257-6			

EYELINER CREAM

					
Cosmic Brown 223-258-9	Majestic Plum 223-258-5	Starry Night 223-258-8	Emerald Green 223-258-7	Saturn Grey 223-258-6	Blackest Black 223-259-0

EYELINER WATERPROOF

						
Smoky Grey 223-252-7	Blackest Night 223-252-5	Midnight Blue 223-252-6	Brown Chocolate 223-252-4	Seafoam Green 223-253-0	Blue Skies 223-252-9	Raisin 223-252-8

BROW DEFINER

					
Tawny 223-412-8	Light Blonde 223-412-6	Blonde 223-412-7	Light Brown 223-413-0	Dark Brown 223-412-9	Brunette 223-413-1

LIPLINER

					
Honey Peach 223-255-4	Lava Red 223-255-5	Candy Apple 223-255-6	Passion Red 223-255-3	Red Brick 223-256-0	Au Naturel 223-255-8
					
Simply Spice 223-256-2	Merlot 223-255-7	Perfect Plum 223-256-4	Pink Bouquet 223-255-9	Chocolate 223-256-3	Mystery Mauve 223-256-1

Long-wearing retractable liners for **EYES, BROWS** and **LIPS**.

fmg Glimmer Liners
Each, 0.28 g

Eyeliners
Define eyes perfectly. Rich pigments provide vivid, opaque colour laydown. Fade-resistant.

Brow Definer
Waterproof formula infused with nourishing castor oil, aiding in hair growth and with coconut oil, leaving brows feeling soft and smooth. Smudge/transfer/sweat-proof.

Lipliner
Super-precise application for high-definition, sculpted lips. Prevents feathering and extends the wear of lip colour. Fade-resistant. Matte finish.

13.00 each or...

**ANY 3
FOR
10.99**
PAGE 31
To get the 3 FOR price,
order in multiples of 3.



Blackest Black
223-883-9

Long-lasting wear.

fmg Glimmer Liquid Eyeliner
Easy-glide, quick-dry precision felt-tip liner delivers rich colour. Transfer/sweat/waterproof. 1.1 ml
reg. 18.00
14.99



Black Brown
224-701-4
Black
224-700-2

Smudge- and waterproof.

fmg Glimmer Always On Point Eyeliner
Creamy, smooth formula stays colour-true all day. Paraben/sulfate/talc-free. 0.25 g
reg. 13.00
9.99



fmg CathyCat Nine Lives Precision Liquid Eyeliner
Slim-tip brush delivers a precise line of waterproof and sweatproof colour that will not skip, tug or smudge. 2 ml
Blackest Black 224-973-3
reg. 26.00
21.99



Available in 3 ultrafine pearl finishes: Matte Sateen, Shimmer or Glitter.

fmg Glimmershadow Liquid Eyeshadow
Long-wearing, no-smudge, no-crease, buildable formula with no messy fallout. Sheer wash of sateen colour to full-on glittery wow. Water-resistant. Paraben/phthalate/sulfate-free. 2 ml
reg. 17.00
11.49



Ultramarine

READY FOR TAKEOFF

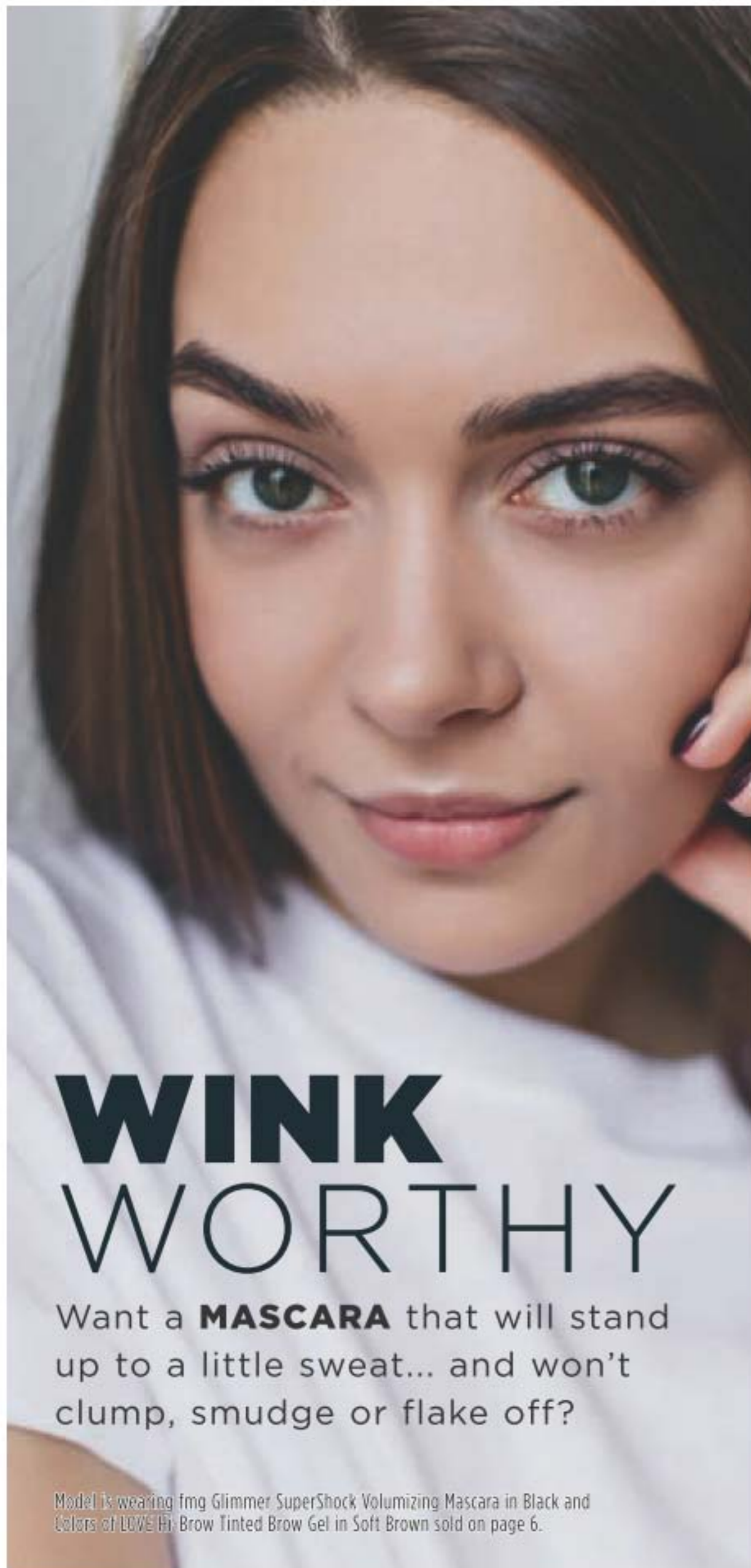
Turn makeup **REMOVAL** into a moisturizing skin-soothing ritual.



NEW

fmg Moisturizing Eye Makeup Remover Lotion
Works quickly and easily to gently remove all traces of eye makeup. Plus, it conditions and moisturizes your lashes and the fragile skin around your eyes! Lightweight, water-based, formula. 75 ml
225-745-7
12.00 each or...

2 FOR 12.00
PAGE 33
To get the 2 FOR price, order in multiples of 2.



WINK WORTHY

Want a **MASCARA** that will stand up to a little sweat... and won't clump, smudge or flake off?

Model is wearing fmg Glimmer SuperShock Volumizing Mascara in Black and Colors of LOVE Hi-Brow Tinted Brow Gel in Soft Brown sold on page 6.



A. LENGTH & CURL

B. WATER RESISTANT

C. WATERPROOF FORMULA

E. LONG & HEALTHY

F. BIG & BOLD

A. CathyCat Curl & Flare Mascara
Nourishing formula with a blend of conditioning coconut and argan oils and lash-supporting panthenol. 8 g
Blackest Black 224-774-1
reg. 23.99
19.99

B. CathyCat Play All Day Mascara
Nourishing formula with a blend of conditioning coconut and argan oils and lash-supporting panthenol. Removes easily with soap and water. 8 g
Blackest Black 224-780-2
reg. 23.99
19.99

C. Wash-Off Waterproof Mascara
Washes off with soap and water. 6 g
Black 100-388
reg. 14.00
11.49

E. fmg Glimmer SuperExtend Nourishing Mascara
Enriched with vitamin E. 7 ml
Black 225-983-9
Black Brown 225-984-0
reg. 16.00
12.99

F. True Color SuperShock Volumizing Mascara
10 ml
Black 110-323-2
reg. 16.00
12.99

CAPTIVATING EYES IN 4 EASY STEPS



A



PREP THE UNDER EYE AREA WITH A LUXURIOUS PRIMER

A. Under Eye Primer

Helps diminish the appearance of dark circles, puffiness and fine lines. Infused with caffeine, green tea extract. Paraben/phthalate/fragrance-free. Vegan. 9 g
224-948-4
reg. 32.00
26.00 or...



SWEEP PRIMER ON TOP & BOTTOM LASHES



B

B. Eyelash Primer

Lash-building primer visibly lengthens and boosts volume. Nourishing formula keeps lashes looking healthy and strong with biotin and collagen. Maximizes the performance of any mascara for gorgeous, lush lashes. Vegan. Cruelty-free. 10.5 ml
224-949-0
reg. 32.00
26.00 or...



C



APPLY MASCARA TO PRIMED LASHES

C. Ultimate Volume Mascara

Rich black pigmented formula with extreme staying power. Long-wearing formula leaves lashes feeling soft. Won't budge, smudge or transfer but removes easily. Vegan. Cruelty-free. 8 ml
Rich Black 224-700-0
reg. 32.00
26.00 or...



DEFINE & FILL IN BROWS

D. 24-Hour Brow Pomade

Smudge-proof waterproof formula. Matte finish. Includes dual-ended applicator with angled tip brush and spoolie, 11 cm L. 4 g
reg. 35.00
28.00 or...

Blonde
225-088-8

Dark Brown
225-088-5

Ash Brown
225-088-3

Light Brown
225-088-7

Brown
225-088-6

Black Brown
225-088-4

CHOOSE ANY 2 FOR 39.99

PAGES 36-37

To get the 2 FOR price, order in multiples of 2.

fmg GLOKOLOR

Clean. Vegan. Hydration.

Hybrid Face Primer

Light, breathable formula softens the appearance of imperfections while creating a flawless canvas for makeup. With aloe vera, agave and algae extracts to help soothe and nourish your complexion. Dermatologically-tested. Paraben/sulfate-free. 30 ml
225-725-6
 reg. 35.00
29.00

Hybrid Face Mist

Spritz it anytime, anywhere for an instant boost of moisture to refresh skin. With aloe vera, agave and algae extracts to help soothe and nourish your complexion. Dermatologically-tested. Paraben/sulfate-free. 80 ml
225-725-5
 reg. 35.00
29.00



Model is wearing TPSY Shiny Lip Oil in Love Galore.

TPSY



Gloss? Balm?
 Even better!

Shiny Lip Oil

A deeply moisturizing lip oil that is instantly absorbed with a tint of colour and matches every lip. **No hassle. No residue. No stickiness.** Infused with jojoba, argan and castor oil. Vegan. Earth friendly packaging. Use alone or over your fave Forever Lip Marker. 3.7 g
reg. 22.00
18.00



Get kiss-ready with the perfect partner.

Forever Lip Marker

Hydrating formula that stays on lips all day. Unique marker design allows for easy application and a vibrant, juicy look. Kiss-proof. 2.5 ml
reg. 22.00
18.00

Moisturizes, protects and nourishes lips.

Lip Conditioner
With mango seed butter, vitamin E, and jojoba and sunflower seed oils. Leaves dry, cracked lips feeling soft and smooth. 3.5 g
223-379-6
reg. 16.00
12.99



Helps polish and prepare lips for effortless lip colour application.

Lip Polish
A blend of vitamin E, moisturizing squalane, and extracts of blueberry, strawberry and raspberry, leaves lips feeling supple, pampered and kissably soft. Sugar-based formula gently buffs away dry, flaky skin for softer, smoother lips. 10 g
224-935-1
reg. 20.00
15.99



Lip Glaze
Non-sticky creamy formula with antioxidant vitamin E. Buildable sheer to medium coverage with lustrous glossy finish. 9 ml
reg. 16.00
12.99



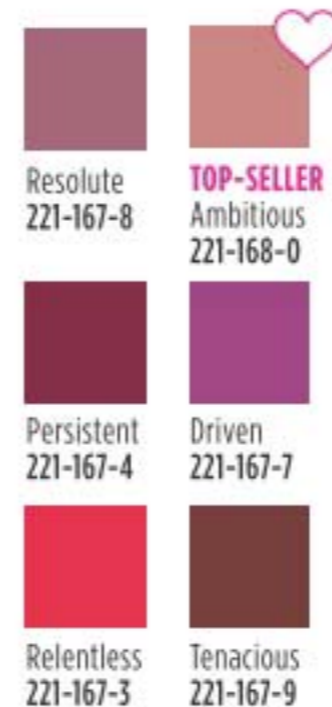
With hydrating castor seed oil and antioxidant vitamin E.

Lip Plumper
Non-sticky. No stinging or burning, just fuller lips! Shiny gloss finish gives hours of wear without feathering. Universally flattering, brilliant shade. Refreshing peppermint scent. 9 ml
Brilliance
223-379-9
reg. 17.00
13.99



LIP COLOUR

Mattitude Soft Matte Liquid Lip
Micronized pigments release vivid colour. Poppy seed oil and vitamin E nourish and smooth lips. Paraben/sulfate/phthalate-free. 4 ml
reg. 19.00
13.99



fmg Glimmer Lip & Cheek Stain
Highly pigmented luminous shades for cheeks and lips. Lightweight gel formula blends and builds like a dream and wears all day. Transfer-proof. Paraben/fragrance-free. Vegan. 5.5 ml
reg. 20.00
16.99



A perfect nude pout.
Birthday Balm Lip Crayon
Moisturizing formula rich in non-GMO shea butter for soft supple lips. Mineral oil/paraben/phthalate/gluten-free. 2.7 g
reg. 17.00
13.99



Let us help you find your perfect formula and shade at avonlipmatch.ca



DUAL ENDED

Step 1:

Apply the lip colour and let dry.

Step 2:

Follow with clear lacquer top coat.

Rouge Lacquer

Moisturizing top coat locks colour in place for a high-shine finish that keeps lips looking beautiful and feeling comfortable for hours. Transfer/smudge/feather-proof. Vegan. Paraben-free. 5.6 g total weight. **reg. 32.00**
26.00

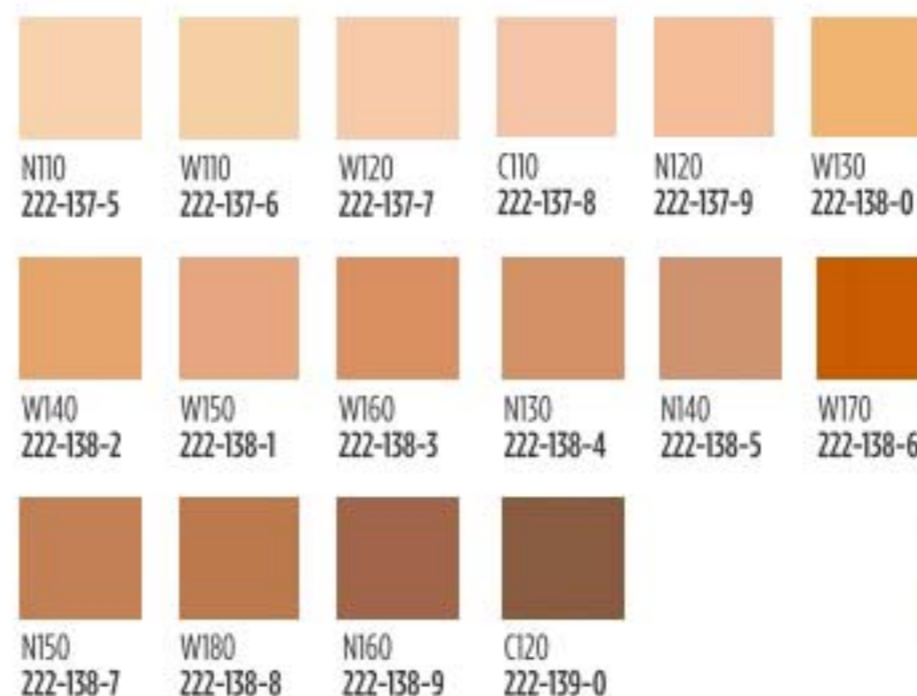


Essence Lipcream

Plant-based Bio-Retinol, known for effective anti-aging properties without the harsh irritation, improves lip hydration and protection. High-shine finish. 3 g **reg. 32.00**
26.00



Good Housekeeping Magazine 2022 Beauty Award Winner.



Available in Cool (C) Neutral (N) and Warm (W) undertones.

Compact Powder Foundation

Use as foundation or setting powder for buildable, medium-to-full coverage. Amino-acid coated pigments control shine and visibly smooth skin for perfected, all-day wear. With collagen, lavender oil, artichoke and chamomile extracts. 9.5 g **reg. 52.00**
42.00



Cushion Foundation

Lightweight, breathable formula applies evenly, helping to cover the look of imperfections with buildable velvety soft-matte colour. Light-to-medium coverage. Includes sponge puff applicator. Paraben/phthalate/fragrance-free. 12 g **reg. 39.00**
36.00



Available in: Cool (C), Neutral (N) and Warm (W) undertones.





Instantly hydrates, **BLURS** imperfections and **EVENS** skin tone!

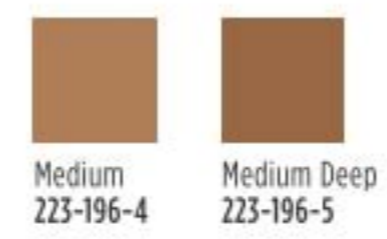
THE MULTI TASKERS

Filter Serum Tint Foundation
Lightweight formula infused with **hyaluronic acid, vitamin E** and a **berry complex**. Creamy formula transforms to a demi-matte powder finish for a beautiful veil of colour. Buildable sheer-to-medium coverage. Suitable for all skin types. Talc/paraben/fragrance-free. Includes sponge applicator. 12 g
reg. 24.00
21.99



fmg MATCH

fmg Magix Tint Radiant Tinted Moisturizer
Buildable coverage. With **passion fruit, chia** and **sunflower seed oil** and **antioxidant vitamins E** and **B5**. For normal, dry, combination and oily skin. Paraben-free. 30 ml
reg. 20.00
15.99



Blend of ultrafine rose quartz, ruby and tourmaline.
Dust Finishing Powder
Weightless loose mineral powder with soft matte finish. Wear alone or to set makeup. Includes no-spill twist-and-lock sifter. Talc/oil/paraben-free. 6 g
reg. 24.00
19.99



Mineral-infused loose powder and brush in one!
Set Finishing Powder To-Go
Creates an invisible veil that controls shine and sets makeup. Lightweight formula diffuses light and visibly blurs pores and fine lines. Silky-soft matte finish never looks cakey. Talc/paraben/fragrance-free. 2.7 g
222-878-0
reg. 24.00
19.99

Twist. Shake. Dust. Take me everywhere!



Creates an invisible veil that controls shine and sets makeup.
Set Finishing Powder
Lightweight, mineral-infused loose powder diffuses light and visibly blurs pores and fine lines. Silky-soft matte finish never looks cakey. Includes powder puff. Talc/paraben/fragrance-free. 6.5 g
224-487-0
reg. 24.00
19.99



Cover + Perfect + Blur

Wand Foundation Stick

Full and flexible all-over coverage in a demi-matte finish. Helps to control oil and shine. Water-resistant.

With shea butter and antioxidant vitamin E.

Conceal, contour and highlight with the on-the-go wand perfect for easy touch-ups. Paraben/sulfate/phthalate-free.

Vegan. 6 g
reg. 23.00
18.99

Packaging may vary.

			
Marshmallow (N) 224-693-1	Coconut (N) 224-693-2	Vanilla (W) 224-693-3	Macadamia (W) 224-693-4
			
Chai (W) 224-693-5	Toasty (N) 224-693-6	Cappuccino (W) 224-693-7	Tiramisu (W) 224-693-8
			
Amaretto (N) 224-693-9	Latte (W) 224-694-0	Hazelnut (W) 224-694-1	Pecan (N) 224-694-2
	Available in Warm (W), Neutral (N) or Cool (C) undertones.		
Truffle (C) 224-694-3			



Demi-matte finish

COLOUR CORRECTING STICKS

Neutralize unevenness, brighten and colour correct in one swipe! Available in 3 targeted **COLOUR-CORRECTING** shades.

Wand Correcting Stick

Minimize skin concerns without creasing or caking! With shea butter and vitamin E. Paraben/sulfate/phthalate-free. 6 g
reg. 23.00
18.99



Pistachio

Sherbet:
Neutralizes dark circles and marks.
225-818-3

Gelato:
Brightens dullness.
225-818-1

Pistachio:
Neutralizes redness.
225-817-9

Creamy veil of colour helps camouflage as it **CORRECTS** and **BRIGHTENS**.

THE ULTIMATE COMPLEXION PERFECTION



Corrector Brightening Perfector
Helps reduce the appearance of fine lines, dark circles, blemishes and blurs imperfections. Buildable sheer-to-medium coverage with a demi-matte finish. Great for on-the-go. Talc/paraben/sulfate/alcohol/fragrance-free.

3.2 g
reg. 19.00
14.99

Lightweight formula infused with caffeine, soothing marigold and vitamin E

BEAUTY ESSENTIALS

Precision tweezers.

Daily Beauty Tools Tweezers

Amp up your beauty routine with angled tweezers. Stainless steel. 9 cm L.

224-612-4
reg. 6.00
4.99



fmg Express Makeup Brush Wash

Alcohol-free formula. Contains soothing aloe vera and green tea extract. Bristles are left conditioned with no leftover residue. 30 ml
225-595-0
reg. 17.00
14.00



Travel-friendly resealable pack.

fmg Makeup Remover Wipes

Unscented wipes gently and easily remove it all... from stubborn makeup to dirt and oil. Leaves skin feeling soft and clean without leaving behind a heavy residue.

225-523-0
reg. 13.00
10.49 each pack

Pack of 24
WIPES



fmg Flawless Complexion Sponge

Man-made materials. Wash and rinse after each use. 6 cm L.

225-067-4
reg. 13.00
9.99

Flat sides for contouring, highlighting and concealing



Full rounded bottom for all-over makeup

BEAUTY ESSENTIALS

Large-sized **TABLETOP** or **HANDHELD** - perfect for everyday skin care or makeup routine



On/Off adjustable light intensity

1X magnification
23 x 20 cm
(9" x 8")

3 light settings: warm, natural and cool

Full ring LED lighting provides a clear shadow-free reflection

NEW

LED Mirror

Hand-held light-up cosmetic mirror with charging base. 1X magnification (normal view). Type-C USB port. ABS/glass/PVC. Includes charging cable. Mirror, 23 x 20 cm; handle, 13 cm L.

226-086-2
reg. 60.00
49.99

limited quantities



MAKEUP

A. fmg Blush & Contour Brush

With a fluffy angled contour brush on one end and a tapered oval blush brush on the other to add colour and dimension. 18 cm L.
224-615-8
reg. 30.00

B. fmg Complexion Blending Brush

With a dense, rounded buffing foundation brush on one end and a precise rounded brush on the other to create a flawless canvas. 17 cm L.
224-615-6
reg. 31.00

LIMITED TIME OFFER

17.99 each

NAIL ESSENTIALS

Comfortable grip handle.

Nail Brush

Works better than soap and water alone to clean dirt under fingernails and on hands. Polystyrene/polypropylene. 10 x 5 x 3 cm

225-514-2

reg. 3.99

2.99

limited quantities



Get mistake-free manis at-home

fmg Glimmer Nail Lacquer Eraser Pen

Glide over nail edges after applying nail lacquer for a clean and perfected manicure.

4 ml 224-101-7

reg. 14.00

10.99



SATIN
Black Hole
Burgundy
223-650-9

SATIN
Night Sky
Berry
223-644-3

SATIN
High
Magnitude
Mauve
223-651-3

METALLIC
Meteorite
Rose
223-651-5

METALLIC
Golden
Galaxy
223-651-4

Black Hole
Burgundy

NEW

Max shine and vivid colour for a salon-worthy mani that lasts!

fmg Glimmer Nail Lacquer

Silky nail-strengthening formula with gel-like finish provides lasting wear that does not chip. Vegan. Available in satin or metallic pearl finishes. 12 ml

reg. 14.00

11.99

CLEAN NAILS WITHOUT THE MESS

Convenient, easy-to-use formula

REMOVES NAIL POLISH anytime or anywhere,
at home or **ON-THE-GO!**



NEW

Avon Pro Nail Polish Remover Pads

Gentle, pre-moistened pads remove stubborn nail polish from nails. 50 acetone-free pads.

226-231-9

reg. 12.00

~~9.99~~

**NEW SPECIAL
PRICE!**

7.99

introducing

RÊVE EN CUBE



LETTER FROM THE STARS

Explore an enchanting space where fantasy blooms, romance is uninhibited and true beauty comes to life.



FREE

Rare Pearls Body Lotion (200 ml) with every \$30 fragrance purchase, pages 53-73 - \$17 value.

In case of unforeseen demand, Avon reserves the right to substitute with a product of equal or greater value.

LARGE
100 ML
eau de
parfum



NEW

NOTES:

Top: Radiant Grapefruit, Lemon
Mid: Sweet Gardenia, Jasmine
Dry: Fuzzy Peach, Balsamic

Rêve en Cube Letter from the Stars Eau de Parfum
fruity floral

The stars beam brightly against the evening sky, guiding you to a dreamy world that shines with fragrant sparkling notes. 100 ml **222-706-6**
reg. 100.00
85.00

RÊVE EN CUBE

A. Lying on a Cloud

Eau de Parfum
fresh green floral
 Magical notes of ethereal freesia, sweet mimosa and lily of the valley. 100 ml
222-706-5
 reg. 100.00
85.00

B. Misty Green

Eau de Parfum
soft floral
 Uplifting notes of bergamot, lily of the valley and white musk. 100 ml
222-706-7
 reg. 100.00
85.00

LARGE 100 ML
 eau de parfum



A

RÊVE EN CUBE

Explore an enchanting space where fantasy blooms, romance is uninhibited and true beauty comes to life.

LARGE
 100 ML
 eau de
 parfum



B



FREE

Body Lotion
 details page 52

LYRD COLLECTION

Oud Rose
Eau de Parfum
woody floral
 Spicy saffron, centifolia romantic rose and velvety patchouli. 50 ml
223-185-0
 reg. 52.00
42.00



Sparkling Neroli
Eau de Parfum
fresh citrus
 Neroli, bergamot and musk. 50 ml
223-517-4
 reg. 52.00
42.00



Peony Rosé
Eau de Parfum
soft floral
 Sparkling notes of dewy peony petals, pink currant, and sheer musk. 50 ml
223-300-5
 reg. 42.00
28.00



Honeysuckle Blossom
Eau de Parfum
soft floral
 Sparkling notes of delicate apple blossom, lively honeysuckle nectar and radiant vanilla orchid. 50 ml
223-300-7
 reg. 42.00
28.00



NEW

SEASONAL DELIGHTS

It's never too early to get ready for fall and the holidays! Apple picking, tree trimming and pumpkin pie are right around the corner!

Let's Go Apple Picking!
Family fun time at the apple orchard! Delight in the aroma of cozy cinnamon, juicy red apple and crisp cashmere woods. **225-973-6**

Save Room for Pumpkin Coconut Pie
Someone say pie? A warm fall hug with notes of toasted shredded coconut, creamy pumpkin puree and sweet vanilla bean extract. **225-973-8**

Enchanted Snowy Forest
Take a magical walk in a winter wonderland as fresh snow falls and the air fills with notes of frost, pine and smoked woods. **225-973-9**

Sticky Cinnamon Goodness
Yummy! Fluffy warm dough, drizzled with sweet cinnamon sugar and ooey-gooley golden caramel. **225-973-7**



NEW
LIMITED EDITION
❖ **LYRD Candle**
3-wick, 312 g candle gives 30 hours of burn time. 11 cm diam. x 8 cm H. Glass/soy-blend wax. reg. 35.00 **30.00 each**

Never leave a burning candle unattended. Keep out of reach of children and pets.



FREE
Body Lotion
details page 52

HAIKU COLLECTION

Haiku

fresh green floral
A fresh green floral blooming with delicate jasmine, yuzu, muguet and blonde woods.

Hair & Body Mist
96 ml **223-058-7**
reg. 22.00
16.99

Shampoo
350 ml
223-252-0
reg. 19.00
15.99

Body Lotion
200 ml
225-619-3
reg. 17.00
8.99

**Sacred Intense
Luxury Body
Crème**
150 ml
222-621-6
reg. 33.00
26.99

**Intense Luxury
Body Crème**
150 ml
225-011-0
reg. 33.00
26.99



FREE
Body Lotion
details page 52

HAIKU COLLECTION

POETRY for your senses

**Haiku Sacred
Intense
Eau de Parfum**
fruity floral
Discover a divine blend of uplifting tangerine, rose de mai and earthy driftwood, balancing the beauty of nature.
50 ml **222-672-0**
reg. 45.00
34.99

**Haiku Kyoto
Flower Intense
Eau de Parfum**
fresh green floral
An elegant, potent bouquet of violet leaf, white peony and soft cotton musk.
50 ml **222-619-7**
reg. 45.00
34.99

**Haiku Intense
Eau de Parfum**
fresh green floral
Japanese yuzu, delicate muguet and blonde woods.
Eau de Parfum
50 ml **222-619-6**
reg. 45.00
34.99

**Eau de Parfum
Travel Spray**
10 ml **222-952-4**
reg. 22.00
19.99



FAR AWAY COLLECTION

A WANDERLUST
for the exotic

**Far Away
amber floral**
A potent blend of
freesia, jasmine absolute
and enticing amber

**Intense Luxury
Body Crème**
150 ml 225-011-2
reg. 33.00
26.99

**Shimmering
Body Mist**
96 ml 224-616-0
reg. 28.00
21.99

Hair & Body Mist
96 ml 223-058-6
reg. 22.00
16.99

Shampoo
350 ml
222-950-0
reg. 19.00
15.99

**Body Scrub
& Wash**
200 ml
225-001-2
reg. 17.00
13.99

**Beyond
Intense
Body Crème**
150 ml
222-621-2
reg. 33.00
26.99



FREE
Body Lotion
details page 52

RARE COLLECTION

Rare Pearls

soft floral

A luminous blend of shimmering magnolia, white pepper and creamy rosewood.

Hair & Body Mist

96 ml **223-058-8**

reg. 22.00

16.99

Shimmering Body Mist

96 ml **224-615-7**

reg. 28.00

21.99

Shampoo

350 ml **223-251-9**

reg. 19.00

15.99



FREE

Body Lotion
details page 52



RARE INTENSE COLLECTION

SHOW OFF

every facet of your beauty

Rare Pearls Intense

Eau de Parfum soft floral

A luminous blend of shimmering magnolia, white pepper and creamy rosewood. 50 ml

222-619-8

reg. 45.00

34.99

Rare Platinum Intense

Eau de Parfum amber floral

Warm blend of iris, ambrette and smooth vetiver. 50 ml

222-671-9

reg. 45.00

34.99

Rare Gold Intense

Eau de Parfum amber floral

Opulent notes of mandarin zest, ylang-ylang and golden amber. 50 ml

222-619-9

reg. 45.00

34.99



AVON CLASSICS always beautiful

Dreamlife Cologne
soft floral
 Mimosa, ylang-ylang and sandalwood. 50 ml
224-615-4
 reg. 26.00
15.99



Candid Cologne
amber floral
 Bergamot, tuberose and patchouli. 50 ml
110-321-3
 reg. 26.00
15.99



Odyssey Cologne
soft floral
 Muguet, ylang-ylang and warm oakmoss. 50 ml
110-321-2
 reg. 26.00
15.99



Night Magic Cologne
woody floral
 Neroli, jasmine and musk. 50 ml
110-300-9
 reg. 26.00
15.99



Topaze Cologne
soft floral
 Jasmine, rose and sheer musk. 50 ml
223-321-3
 reg. 26.00
15.99



Sweet Honesty Cologne
soft floral
 Roses, peach and sandalwood. 50 ml
110-437-8
 reg. 26.00
15.99



Timeless Cologne
soft floral
 Bergamot, jasmine and patchouli. 50 ml
110-373-1
 reg. 26.00
15.99



**CLASSICS
 SPECIAL
 15.99
 EACH**

THE FREE SPIRIT

You know no boundaries and you like to challenge conventions. **Nothing can stop you.**

FRAGRANCE



Free O2
Eau de Toilette
fresh green floral
 Refreshing white peach tea, airy honeysuckle and musk. 50 ml
222-618-9
 reg. 26.00

**LIMITED
 TIME OFFER
 12.99**

FREE
Body Lotion
 details page 52





EAU SO CHIC

scents
for her

Today
Eau de Parfum
soft floral
Joyful notes of
hibiscus and silk musk.
50 ml **836-39**
reg. 42.00
32.00

Live Out Loud
Eau de Parfum
fruity floral
Wild strawberry, sparkling
mimosa and comforting
vanilla. 50 ml **221-142-5**
reg. 56.00
35.00

KATE Fruits & Passion
Eau de Toilette
soft floral
Blend of fruity accents combined
with slightly woody notes giving it
a strong personality with a touch
of mystery. 50 ml **224-114-9**
42.00



AVON CLASSICS COLLECTION

CREAMY SOFTNESS

Perfumed Skin Softener
Moisturizing formula leaves skin
soft and scented. 150 ml
Haiku **222-702-2**
Far Away **222-702-0**
Night Magic **222-623-2**
Odyssey **222-623-4**
Sweet Honesty **222-623-0**
Timeless **222-623-1**
Imari **222-701-8**
reg. 12.00
6.99 each



richly moisturizing HAND CREAM

Hand Cream
Infused with jojoba seed oil
and vitamin E. Leaves skin
lightly scented. 75 ml
Sweet Honesty **224-092-1**
Timeless **224-092-0**
Night Magic **224-092-2**
reg. 9.00
5.99 each



FREE
Body Lotion
details page 52



WOMEN'S FRAGRANCES

Explore a tropical paradise with sparkling grapefruit, tuberose and golden amber.

Far Away Bali
Eau de Parfum
fruity floral
50 ml
223-059-2
35.00 or...



Bright marigold, Indian jasmine sambac and vanilla.

Far Away Infinity
Eau de Parfum
fruity floral
50 ml
223-197-4
35.00 or...



Warm peach, jasmine, spiced amber and spirit-moving woods.

Far Away
Eau de Parfum
amber floral
50 ml
223-198-3
35.00 or...



Rich Mohéli ylang-ylang, Indian jasmine and seductive Madagascar vanilla.

Far Away Gold
Eau de Parfum
amber floral
50 ml
223-197-1
35.00 or...



Floral fragrance favourites for her

ANY 2 FOR 38.00

MIX OR MATCH PAGES 68-73

To get the 2 FOR price, order in multiples of 2.

Japanese yuzu, delicate muguet and blonde woods.

Haiku
Eau de Parfum
fresh green floral
50 ml
220-269-8
35.00 or...



NEW

Brilliant solar notes of wild fig, fresh coconut water and amber.

LIMITED EDITION
Haiku Sunrise
Eau de Parfum
woody floral
50 ml 225-512-5
35.00 or...



Radiant water accord, acacia blossom and amber wood.

Haiku Reflection
Eau de Parfum
fresh green floral
50 ml
115-861-8
35.00 or...



Violet leaf, white peony and soft cotton musk.

Haiku Kyoto Flower
Eau de Parfum
fresh green floral
50 ml
435-140
35.00 or...



FREE

Body Lotion
details page 52



Flirtacious blend of seductive rose, playful jasmine and warm woody notes of sandalwood.

Imari Amor
Eau de Parfum
woody floral
50 ml
224-353-2
35.00 or...



Luscious plum, hypnotic purple orchid, warm vanilla, amber and musk.

Imari Seduction
Eau de Toilette
amber floral
50 ml
220-270-2
35.00 or...



Radiant bergamot, opulent jasmine and vanilla orchid.

Imari
Eau de Toilette
amber floral
50 ml
222-370-1
35.00 or...



Floral fragrance favourites for her

ANY 2 FOR 38.00

MIX OR MATCH PAGES 68-73
To get the 2 FOR price, order in multiples of 2.

Passionate plum, mysterious violet and sandalwood.

Rare Amethyst
Eau de Parfum
fruity floral
50 ml
102-456-8
35.00 or...



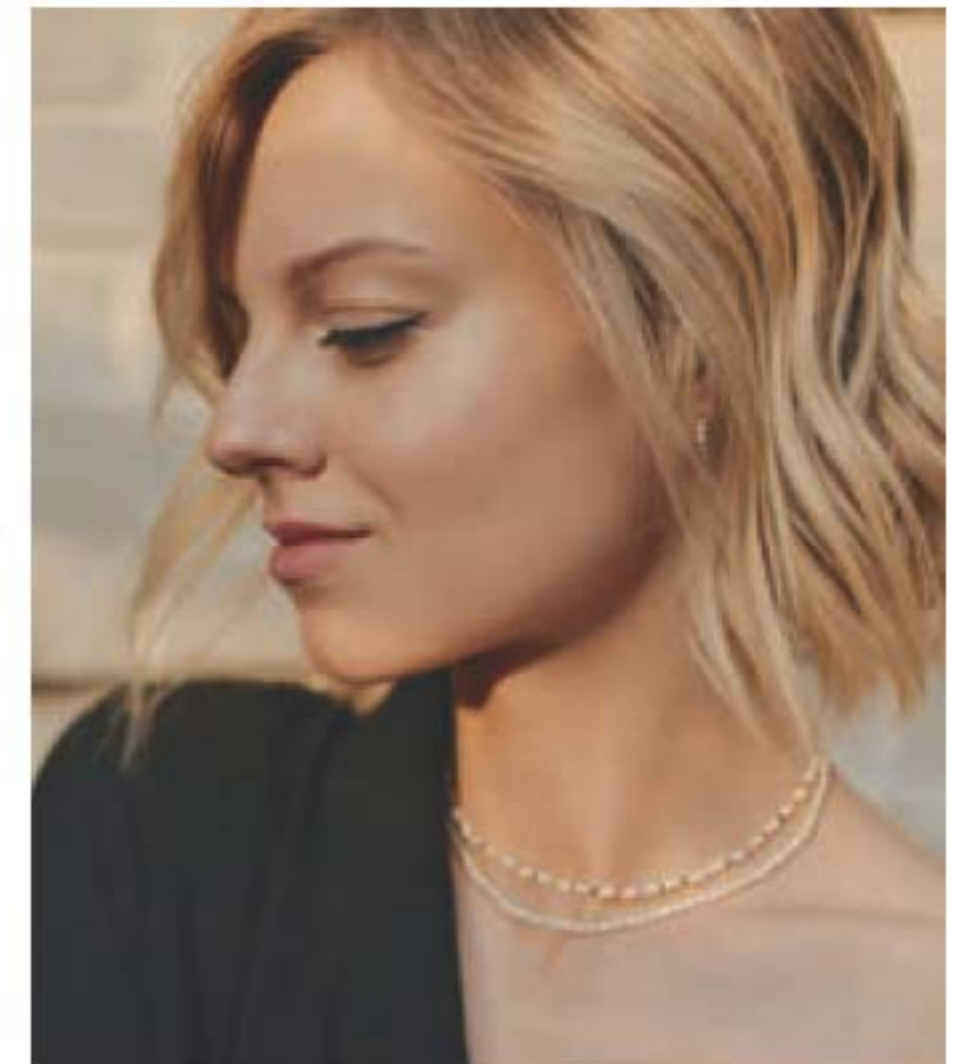
Rich orange flowers sparkle with bergamot and precious amber.

Rare Gold
Eau de Parfum
amber floral
50 ml
102-456-9
35.00 or...



Pearlescent flower accord, creamy magnolia, fresh rosewood and sandalwood.

Rare Pearls
Eau de Parfum
soft floral
50 ml
102-457-0
35.00 or...



FREE
Body Lotion
details page 52



Fresh orange, silver sage and vetiver.

Exploration
Eau de Toilette
fresh aromatic
75 ml
122-508-2
35.00 or...



Bergamot, spicy cardamom and amber.

Mesmerize
Cologne
woody fougère
100 ml
222-370-2
35.00 or...



Pepper, addictive nutmeg and tonka bean.

Mesmerize Black
Eau de Toilette
woody fougère
100 ml
108-628-3
35.00 or...



Fresh fragrance favourites for him

ANY 2 FOR 38.00

MIX OR MATCH PAGES 68-73

To get the 2 FOR price, order in multiples of 2.

Sparkling citrus, sage and cedarwood.

Perceive
Cologne
fresh aromatic
100 ml 831-73
35.00 or...



Charismatic verbena, spiced cardamom and refined cedarwood.

Alpha
Eau de Toilette
fresh aromatic
100 ml
104-118-3
35.00 or...



A rugged blend of lavender, coriander seed and sandalwood.

Wild Country
Cologne
fresh aromatic
88 ml 836-47
32.00 or...



A fusion blend of bergamot, soft leather and oak moss.

Black Suede
Eau de Toilette
fresh aromatic
100 ml
223-988-3
32.00 or...



FREE

Body Lotion
details page 52

BLACK SUEDE COLLECTION

Black Suede

Black Suede
fresh aromatic

A fusion of bergamot, soft leather and oakmoss.

Bar Soap
90 g **224-707-2**
reg. 9.00
5.99

**Aftershave
Conditioner**
100 ml **222-701-5**
reg. 12.00
5.99

Hair & Body Wash
150 ml **222-701-7**
reg. 12.00
5.99



Black Suede Ultimate

Black Suede Ultimate
woody fougère

A dynamic blend of lemon, rich lavender and tonka bean.

Eau de Toilette
100 ml **223-057-8**
reg. 40.00
31.99

Body Moisturizer
200 ml **223-058-2**
reg. 28.00
21.99

Body Wash
200 ml **223-058-1**
reg. 28.00
21.99



WILD COUNTRY

A confident blend of fresh and aromatic notes.

NOTES

Top: Lavender
Mid: Coriander seed
Dry: Sandalwood



NEW



**Aftershave
Splash**
118 ml
222-574-4
reg. 19.00
14.99

**Hair & Body
Wash**
150 ml
222-701-6
reg. 12.00
5.99

Bar Soap
Moisturizes as it gently cleanses. 90 g
224-707-3
reg. 9.00
5.99

Deodorant Stick
Nourishing formula glides on smoothly without leaving any residue. Lasting odour protection.
28 g **222-670-3**
reg. 17.00
13.99

STUDIO 1886

The perfect balance of confidence and strength.

Gentleman

woody fougère

A bold and dynamic blend of bergamot, coriander, black pepper and cedarwood.

Eau de Toilette

50 ml **225-000-9**

reg. 70.00

55.00

Aftershave

Lotion

200 ml

225-593-0

reg. 23.00

19.99



Lightweight lotion moisturizes and soothes skin



MESMERIZE ULTIMATE

Magnetic blend of black pepper, zesty pomelo and sensuous patchouli.

Eau de Toilette

woody fougère

100 ml

222-952-5

reg. 50.00

39.99

Body Wash

200 ml

223-057-9

reg. 28.00

21.99



Mesmerize Platinum Ultimate

Be drawn in by an alluring blend of crisp pear, violet and warm amber.

Eau de Toilette

woody floral

100 ml

223-057-7

reg. 50.00

39.99

Body Moisturizer

200 ml **222-970-1**

reg. 28.00

21.99

the skin plumper COLLAGEN

Collagen named from the Greek word “kólla,” which means glue, it’s skin’s strength-building protein.

**Collagen Booster
Microneedling Polisher**
A combination of gentle exfoliators polishes away dull skin cells, diminishes the look of fine lines and wrinkles, and improves the appearance of pores. Use PM up to 3X per week. 50 ml **221-459-9**
reg. 48.00
27.99

**Collagen Booster
Rejuvenating Serum Ampoules**
With a powerful peptide blend. Hypoallergenic. Clinically/ dermatologist-tested. Use 1 ampoule each AM and PM. 60 ampoules, 0.22 ml each. **221-391-4**
reg. 88.00
69.99

**Collagen Booster
Eye Lift Pro Dual Eye System**
See a dramatic difference in one week. Upper eye gel, 10 ml; lower eye cream, 10 ml **223-261-7**
reg. 56.00
33.99



fight visible collagen breakdown with PEPTIDES

See the look of fine lines and wrinkles reduced and skin elasticity improved.

PRESS DOWN
to dispense
just the right
amount!



NEW

With peptides to help firm the look of skin and improve a youthful bounce.

**Isa Knox Anew Clinical
Collagen Booster
Firming Cream**

With moisturizing and skin-plumping niacinamide and squalane. Hygienic, airless pump. For optimal results, apply following Rejuvenating Serum Ampoules (sold on page 78). 50 ml **226-035-4**
reg. 65.00
39.99

THE WRINKLE WRANGLER RETINOL

A derivative of vitamin A, it speeds up surface cell regeneration so wrinkles appear visibly diminished. Our formulas have the **#1 wrinkle-fighting** ingredient recommended by dermatologists.



See dramatic results with our **highest dose of retinol (1%)**.

Line Eraser with Retinol [1.0%] Advanced Retinol Serum

High-performance serum dramatically reduces the appearance of fine lines, wrinkles and dark spots. 30 ml **223-424-8** reg. 72.00 **55.99**

In one week, even deep wrinkles start to show improvement.

Line Eraser with Retinol Targeted Treatment

In just one week, the look of deep lines are smoothed and resurfaced.* Use PM. 20 ml **223-262-8** reg. 56.00 **33.99**

*Based on a clinical study.

THE SUPER EXFOLIATOR GLYCOLIC ACID

With the smallest molecules of AHAs to penetrate the outer skin layer, formulas with it help **minimize the look of fine lines, discoloration and dullness** so skin looks smoother, fresher and more radiant.

FOR BODY



Revitalize & Reveal Advanced Wrinkle Corrector
In just two weeks, wrinkles appear reduced. 50 ml **223-262-0** reg. 56.00 **33.99**

Revitalize & Reveal Extra Strength Retexturizing Peel
Results similar to a 35% pro glycolic peel.** 30 fragrance-free pads. **223-188-5** reg. 56.00 **33.99**

**In 6 out of 8 attributes tested over a 7-week period.



Revitalize & Reveal Resurfacing Lotion for Body

Advanced, luxurious formula, powered by lactic acid, boosts skin's natural exfoliation process and moisturizes with shea butter. 150 ml **223-261-2** reg. 48.00 **27.99**



skin-nourishing
ANTI-AGING
care for
skin and lips

Lip Balm - Red
Luxurious paeonol-infused tinted lip balm provides long-lasting hydration. Wear alone or over lipstick. 3.4 g
224-497-1
reg. 35.00
29.99



Day Cream
This multi-purpose paeonol-infused day cream visibly reduces the appearance of wrinkles and improves the appearance of elasticity, radiance and skin texture. With nutmeg to help visibly even skin tone, and soothe skin.
50 ml **224-488-6**
reg. 70.00
56.00



Serum
The luxurious serum, infused with paeonol and ceramides, visibly improves the appearance of elasticity, skin texture and radiance, and reduces the appearance of fine lines and wrinkles.
40 ml **224-488-7**
reg. 80.00
64.00



Eye Serum
Infused with paeonol and ceramides to help visibly reduce the appearance of fine lines around the eye area, diminish dark circles and helps reduce puffiness.
30 ml **224-488-8**
reg. 70.00
56.00



Balm Stick
Moisturizing stick formula with peony extract, plus a firming complex featuring castor, moringa and argan oils. Helps skin look smoother with a healthy glow. Pop it in your purse, and apply to forehead, eye area, neck and anywhere you want extra care. 7 g
225-907-0
reg. 35.00
29.99



Targets
fine
lines &
wrinkles

rejuvenating
MULTI-CORRECTOR
addresses key signs of aging

**UNIQUE
MULTI-BENEFIT
FORMULA**

- paeonol
- niacinamide
- panthenol
- bakuchiol extract
- hypoallergenic
- dermatologist-tested

**LARGE
50 ML**

NEW

**Isa Knox LXNEW
Ultimate Rejuvenating
Multi-Corrector**

Luxurious paeonol-infused serum helps visibly address key signs of aging. Skin looks smoother and more youthful-looking. Pat into areas prone to fine lines and wrinkles before moisturizer.
50 ml **226-113-8**
reg. 70.00
49.00



recapture
the look of
YOUTHFUL
contours

Day Cream Broad Spectrum SPF 30

Deeply moisturizing formula, with firming hibiscus extract and a blend of anti-aging ingredients, including cica and panthenol. 50 ml
224-731-3
reg. 70.00
56.00

SPF 30



Day Cream

Deeply moisturizing hibiscus extract-infused formula with smoothing ceramide, visibly tightens facial contours and reduces the appearance of wrinkles for a firmer, smoother, more sculpted look. 50 ml
223-197-6
reg. 70.00
56.00



Sculpting Oil Serum

Hibiscus extract-infused serum, peptides and rejuvenating antioxidants, helps visibly smooth wrinkles and tighten facial contours for a firmer, smoother, more lifted look. 40 ml
223-197-7
reg. 80.00
64.00



Eye Cream

Hibiscus extract-infused formula with hydrating panthenol and revitalizing antioxidants leaves the delicate eye area looking firmer, brighter, more defined. 25 ml
223-197-8
reg. 70.00
56.00



Neck and Chest Cream

A blend of anti-aging ingredients including ceramide, shea butter, panthenol and squalane so vulnerable skin along neck and chest appears firmer, smoother and lifted. 50 ml
224-106-2
reg. 70.00
56.00



**NIGHT
CREAMS**

Wake up to softer, smoother and more vibrant skin.

SKIN CARE



Two-step cream



Platinum Night Cream

Infused with firming hibiscus extract, ceramide, squalane and shea butter, visibly tightens facial contours and reduces the appearance of wrinkles for a firmer, smoother, more defined look. 50 ml
223-197-5
reg. 70.00

Ultimate Rejuvenating Dual Night Cream

Two-step cream infused with paeonol and macadamia oil. Volume Cream (pink) with rice bran extract to help visibly plump the appearance of skin. Firming Cream (white) with peptides. Each, 25 ml
224-488-5
reg. 70.00

**LIMITED
TIME OFFER**
34.99
each

ANEW PLATINUM

Overnight, skin appears smoother.

Night Cream

Over time, skin appears resculpted. 50 g

106-588-4
reg. 59.00
34.99



Visibly lifts and firms the look of your jawline.

Day Cream Broad Spectrum Sunscreen SPF 25

Helps restore the look of youthful skin. 50 g

223-642-3
reg. 59.00
34.99



Dual-purpose treatment for eyes and lips.

Eye & Lip Cream

Dual applicator. 15 g

429-062
reg. 59.00
34.99



95% of women showed a visibly re-contoured neck area.*

Firm and Sculpt Cream for Neck and Chest

Use PM after cleansing. 50 g

225-264-0
reg. 59.00
34.99



*Based on a clinical study.

get a lifted look with AGE DELAY SERUM

A fast penetrating serum that **visibly minimizes the appearance of multiple signs of aging**



An advanced anti-aging serum that addresses sagging.

Age Delay Serum

With an innovative antioxidant technology containing niacinamide (vitamin B3) and panthenol (pro-vitamin B5) plus peptides. Use AM and PM before moisturizer. 30 ml

224-622-0
reg. 63.00
38.99





Overnight, the appearance of skin is smoother, firmer and brighter.

Repair Night Serum
Advanced restorative formula diminishes the appearance of fine lines and visibly improves skin tone and texture. Use PM before moisturizer.
30 ml **224-621-9**
reg. 63.00
38.99



Works while you sleep to revive and recreate the look of youthful skin.

Multi-Performance Night Cream
Restores a radiant and youthful appearance.
50 g
122-904-2
reg. 59.00
34.99



3X more powerful together than an oil or serum alone.

Supreme Dual Elixir
Two innovative formulas; a unique serum and a luxurious blend of precious oils. Use after cleansing.
Serum/oil, 20 ml each.
222-400-7
reg. 84.00
55.00



Skin looks visibly firmer with fewer wrinkles and appears more luminous than ever before.

Multi-Performance Day Cream Broad Spectrum Sunscreen SPF 25
50 g
223-650-7
reg. 59.00
34.99



Open your eyes to a smoother and firmer look with this 2-in-1 treatment.

Multi-Performance Eye System
Visibly smooths the look of crow's-feet and under eyes look visibly de-puffed.
Cream, 15 g; elixir, 2.5 g
122-538-2
reg. 59.00
34.99



ANEW VITAMIN C

COLOURLESS LIP TREATMENT

Antioxidant Lip Treatment

Visibly plumps, nourishes and protects to keep lips looking youthful. 3.8 g

222-256-6
reg. 20.00
11.99



EYE CREAM

Brightening Eye Cream

Reduces the appearance of dark circles and leaves under-eye area looking brighter and more even-toned. 15 ml

221-940-3
reg. 48.00
26.99



WARMING PEEL

Warming Peel

Dual exfoliation, with vitamin C flakes and natural seeds, gently buffs skin with a warming sensation when activated with water, opening pores to remove impurities.

100 ml 221-072-6
reg. 38.00
22.99



FACE MASK

Overnight Radiant Mask

With vitamins C and E, powerful antioxidants that visibly improve skin texture and boost radiance. Leave on overnight.

50 ml 222-985-5
reg. 50.00
29.99



BOOSTS RADIANCE

Illuminating Body Serum

Visibly improves skin texture and helps skin retain essential moisture. 200 ml

222-985-4
reg. 48.00
29.99



SMOOTHS THE LOOK OF SKIN

Nourishing Body Butter

Help restore radiance and defend against free radical damage. Fruity-floral and citrus scent.

230 ml 225-903-7
reg. 45.00
24.99



glow with it

Our expanded Vitamin C Collection helps reveal the look of radiance all over every inch of you.

FOR FACE
PRIMING
MOISTURIZER

Glow Body Scrub

Replenishes moisture and reveals soft, glowing skin. Refreshing citrus scent. 255 g

224-623-6
reg. 50.00

Illuminating Priming Moisturizer

Instantly illuminates and hydrates your complexion for a healthy, radiant look. Wear alone or under makeup. 50 ml

221-940-4
reg. 48.00

FOR BODY
EXFOLIATES DULL, DRY SKIN



LIMITED
TIME OFFER
19.99
each

lasting hydration

With hyaluronic acid and raspberry antioxidant, keeps skin looking refreshed and glowing!

Gel Cream

This gel cream has a weightless feel! The water-like gel absorbs instantly making skin appear smoother, refreshed and plumped with hydration.

50 g **220-387-9**
reg. 48.00
26.99

Cleansing Micellar Water

With panthenol and vitamin E. Gently yet effectively lifts dirt, oil and makeup while boosting hydration. No need to rinse off!

300 ml **220-388-3**
reg. 20.00
12.99



Large
300 ml



clean green + serene

Hemp-derived facial oil nourishes, balances and soothes for calm, happy and radiant skin.

BEAUTIFUL BENEFITS

- lightweight
- absorbs easily
- suitable for sensitive skin
- vegan
- paraben/gluten-free
- non-comedogenic
- hypoallergenic

NOURISHING INGREDIENTS

Contains naturally-derived cannabis sativa seed, grapeseed and jojoba seed oils, rich in omega fatty acids and vitamin E to relieve skin discomfort and redness due to dryness.



Hemp Seed Facial Oil

Use AM and PM, after cleansing. If using a serum and/or moisturizer, use oil as last step of routine. 30 ml
222-913-9
reg. 50.00

LIMITED
TIME OFFER
14.99

Amazon Berry Boost

for firmer, tighter looking skin

Farm Rx Smoothing & Firming Body Cream

With açai berry, moisturizing and nourishing Brazil nut oil plus murumuru and cupuaçu butters. 150 ml
224-946-0
reg. 35.00
24.99

FOR BODY

Amazon Berry Boost Smoothing & Firming Body Cream
Crème raffermissante et lissante pour le corps
Amazon Berry Boost
150 ml / 5.1 fl. oz. U.S.

86% natural



96% natural

LARGE 90 ML

NEW

Farm Rx Moisturizing & Firming Mask

Ultra-moisturizing face mask with açai berry, Brazil nut oil plus murumuru and cupuaçu butters. Helps skin look firmer, smoother and tighter. 90 ml
224-942-6
reg. 53.00
39.99

87% natural

Farm Rx Lifting & Firming Serum

With açai berry, known to help skin look smoother and firmer. 30 ml
225-599-1
reg. 63.00
45.99

Pineapple Plus

for visibly glowing skin

87% natural

NEW

Farm Rx Radiance Boosting Mask

With natural alpha hydroxy acid, plus an antioxidant-rich fruit complex to help skin look smoother and more radiant. 90 ml
225-599-2
reg. 53.00
39.99

LARGE 90 ML

85% natural



89% natural

Farm Rx Instant Glow Toner

Revitalizing toner helps visibly minimize pores. Use AM and PM, after cleansing. 150 ml
224-935-8
reg. 35.00
24.99

Farm Rx Brightening Jelly Serum

Helps improve dull, dry skin and reduce the appearance of fine lines, wrinkles and pores. Skin looks radiant. 30 ml
224-938-1
reg. 63.00
45.99

SKIN CARE

Bakuchiol Serum

Penetrates the skin's surface to target fine lines, wrinkles and dullness without irritation. 30 ml
223-643-7
 reg. 63.00
45.99



98%
 natural

Bakuchiol Eye Cream

Reduces the look of dark circles, fine lines and wrinkles, without irritating the delicate eye area, for a smoother, brighter and firmer look. 30 ml
223-643-8
 reg. 53.00
39.99



90%
 natural

Bakuchiol Cream

Formulated with a blend of botanical extracts to visibly reduce the look of wrinkles and improve skin texture for a more youthful look. 90 ml
224-113-1
 reg. 63.00
45.99



92%
 natural

Bakuchiol

a natural wrinkle fighter

Bakuchiol, a gentle plant-based alternative to retinol, helps visibly reduce wrinkles and discolourations without the same irritation.

A. Nourishing Cleansing Balm

Helps protect skin's moisture barrier as it dissolves makeup and impurities. Jar and spatula made of 50% post-consumer recycled material. 100 ml
223-198-1
 reg. 58.00
43.99

B. Cooling Gel

Use as a lightweight moisturizer to help soothe and cool skin, or apply thicker, after serum, as a mask to hydrate overnight as needed. 90 ml
223-642-5
 reg. 53.00
39.99

C. Multivitamin Moisture Cream

Locks in essential nourishing moisture. Use daily after cleansing, serums and treatments. 90 ml
223-642-6
 reg. 53.00
39.99

D. Refreshing Eye Cream

With naturally nourishing Super Greens formula, plus cucumber extract. 30 ml
225-599-0
 reg. 44.00
32.99

E. Refreshing Gel Cleanser

Infused with soothing aloe for clean, healthy skin. Cleanse skin, remove dirt and makeup, and keep skin looking healthy. 240 ml
224-108-4
 reg. 35.00
24.99

Cleanser Refill (not shown)

Refill fills your bottle 2X times! 500 ml
224-113-0
 reg. 53.00
39.99

Super Greens

nourish your skin



87%
 natural

LARGE
 100 ML

86%
 natural

LARGE
 90 ML

98%
 natural

88%
 natural

86%
 natural

2-in-1 moisturizer + spf 50

lightweight formula
with herbal ingredients:

- **noni extract** helps soothe skin
- **marigold extract, aka calendula**, helps improve the appearance of dry skin
- **woodbine, aka honeysuckle herb**, helps reduce flakiness and restore the look of suppleness

aqua bomb broad spectrum SPF 50

Grease-free formula hydrates skin and leaves no white cast or residue! Dermatologically-tested. 50 ml **225-977-9**
51.50



BACK IN STOCK!

specially formulated to effectively hydrate skin with powerful UV protection



- **penta hyaluronic acid** provides multiple layers of hydration
- **ferulic acid** is known for its antioxidant properties
- **aloe polysaccharide** soothes and moisturizes dry skin
- **glycerin** replenishes moisture

96% felt a moisture protective layer on skin, after using for x 7 days*

NEW

aqua bomb hyalucid™ 11% serum

After cleansing and toning, apply 2-3 drops onto face, spread gently and pat until fully absorbed. Use AM or PM. Dermatologically-tested. 15 ml **226-236-9**
39.00

*Based on a home use test conducted on 30 women over 7 days.

Diminish dry, flaky patches and say hello to brighter, smoother skin.



NEW

90% found that the toner pads helped refine the appearance of pores*

93% found that the toner pads help smooth bumpy texture*

100% cotton pads

70 pads gently exfoliate dead skin cells

NEW

aqua bomb PHA exfoliating toner pads

Hydrates and helps improve uneven skin texture to leave skin looking radiant. Formulated with 2% polyhydroxy acid (PHA), centella asiatica extract, hyaluronic acid and panthenol. Dermatologically-tested. 70 pads. 150 ml **226-236-8**
32.50





BELIF

aqua bomb jelly cleanser

For dryness, dullness and uneven texture. Jelly to foam. Amino acids and glycerin-based cleansing agents gently cleanse. 160 ml
222-316-8
40.50



moisturizing eye bomb

Lightweight, refreshing eye cream cools on contact and helps keep eye area firm, resilient and smooth for crease-free makeup application. 25 ml
222-319-0
65.00



the true cream aqua bomb aloe

A moisturizing gel-cream with aloe vera extract to instantly soothe skin, plus a multi-level blend of hyaluronic acid that penetrates different layers for intense hydration, and vitamin E to visibly smooth texture and even tone. 50 ml
223-213-2
51.50



the true cream moisturizing bomb

Lightweight cream, with a comforting, cushiony, whipped texture, envelops skin with intense, long-lasting moisture. Skin looks and feels smooth, supple and deeply nourished. Suitable for sensitive skin.

Full size, 50 ml
225-386-5
51.50

Not shown
 Try-it size,
 25 ml
222-724-9
30.00



the true cream aqua bomb

Refreshing gel cream bursts upon application to instantly cool skin and release a flood of weightless moisture. Helps visibly improve skin elasticity. Skin looks healthy, smooth and supple. Suitable for sensitive skin.

Full size, 50 ml
222-722-7
50.00

Not shown
 Try-it size,
 25 ml
222-723-8
30.00



BELIF

Problem Solution Cleansing Foam

Whipped foam cleanser with natural cleansing and exfoliating agents helps restore a clear and healthy-looking complexion while moisturizing. 100 ml
224-436-4
32.00



aqua bomb hydrating body moisturizer

With lady's mantle, an herb known for its antioxidant and soothing benefits. Provides intense hydration for visibly improved elasticity and a healthy-looking glow. Silky finish. For all skin types. 300 ml
225-539-3
40.50



FOR BODY

Problem Solution Toner

Watery-textured toner helps minimize the look of pores while leaving skin looking more even toned for a silky-smooth complexion. 200 ml
224-436-5
39.00



Problem Solution Moisturizer

Protective, lightweight moisturizer hydrates without irritation. 125 ml
224-436-8
51.50



ADVANCED SKIN CARE

Known to relieve irritated skin, strengthen the skin barrier and gently moisturize.

Clarifying Facial Moisturizer

Gentle clarifying moisturizer removes excess oil. With betaglukan, and chaga mushroom and blue citrus peel extracts. 120 ml

224-998-0
reg. 34.00
23.00

Advanced Cica Eye Cream

Helps moisturize and firm dry, delicate area around eyes, with soothing cica extract and wrinkle-smoothing pro-retinol. With ceramide and pro-vitamin B5 to lock in and enhance moisture. Hypoallergenic.

25 ml 224-113-4
reg. 65.00
52.00

Cica Peptide Ampoule

For skin that needs firming. A concentrated blend of cica and peptides. Dermatologically-tested. Suitable for sensitive skin. Use after cleansing and before moisturizing.

45 ml 221-966-1
reg. 65.00
52.00



TOTAL YOUTH

A biome-based anti-aging collection for firmer, smoother, more radiant looking skin.

Biome Multi-Purpose Balm

Targets the look of fine lines and wrinkles, especially around the eye and lip area. Addresses frown lines and smile lines. Perfectly portable for on-the-go moisture. 10 g

225-987-6
reg. 43.00
34.00



Essential Toner

Lightweight formula with shea butter, a natural moisturizing ingredient, forms a protective layer to help minimize moisture loss. Suitable for sensitive skin. Non-sticky, soft and moisturizing finish. 145 ml

226-417-3
reg. 48.00
39.00



Biome Ampoule

Ampoule infused with hyaluronic acid helps improve the look of firmness, smoothness and radiance. Deeply absorbed by skin. Floral woody fragrance. 35 ml

225-987-4
reg. 63.00
52.00



Biome Derma Mask

A total anti-aging mask with a premium fabric sheet that adheres snugly along the facial contour and quickly nourishes skin. 1 single-use sheet mask.

226-417-5
reg. 6.50
4.99



Biome Cream

Highly moisturizing cream with ceramides melts into skin for intense moisture and a more youthful look. Rich cream formula. Floral woody fragrance. 50 ml

225-987-5
reg. 63.00
52.00



tea tree

A clean beauty line made with tea tree and a **Triple Acid Complex** comprised of **Polyhydroxy Acid, Alpha Hydroxy Acid, and Beta Hydroxy Acid** to target acne-prone skin with pore concerns. Dermatologically tested.

NEW

Pore Cream

A lightweight, watery cream with tea tree extract, panthenol and cica to help soothe dry skin. Daily moisturizer helps lock in moisture without leaving residue. Suitable for acne-prone skin. 50 ml
226-192-4
reg. 45.00
38.00

NEW

Toner Pads

With tea tree extract to help soothe skin and Triple Acid Complex to minimize the look of pores. Double-sided cotton pads can also be used as a DIY soothing mask. Suitable for acne-prone skin. 150 ml 70 pads. 226-116-2
reg. 45.00
38.00

NEW

Pore Ampoule

A lightweight, watery ampoule with tea tree extract and panthenol to help soothe skin, and Triple Acid Complex to minimize the look of pores. Multi-layer moisture shield helps defend the moisture barrier. Suitable for acne-prone skin. 30 ml
226-058-0
reg. 48.00
40.00

NEW

Pore Clarifying Gel Cleanser

With moisturizing hyaluronic acid to cleanse skin of impurities, oils, and dirt, while minimizing the appearance of enlarged pores. 150 ml



the therapy

Anti-aging formulas including skin-soothing calendula, olive oil and Noble Laurel provide **rich antioxidants**.

- Certified vegan
- Hypoallergenic
- For dry skin



Provides ideal texture balance between gel and cream

NEW



NEW

Vegan Blending Toner

A rich and nourishing toner enriched with Edelweiss extract cultivated in Switzerland to help soften and moisturize skin for a healthy and radiant glow. 180 ml 225-591-5
reg. 45.00
38.00

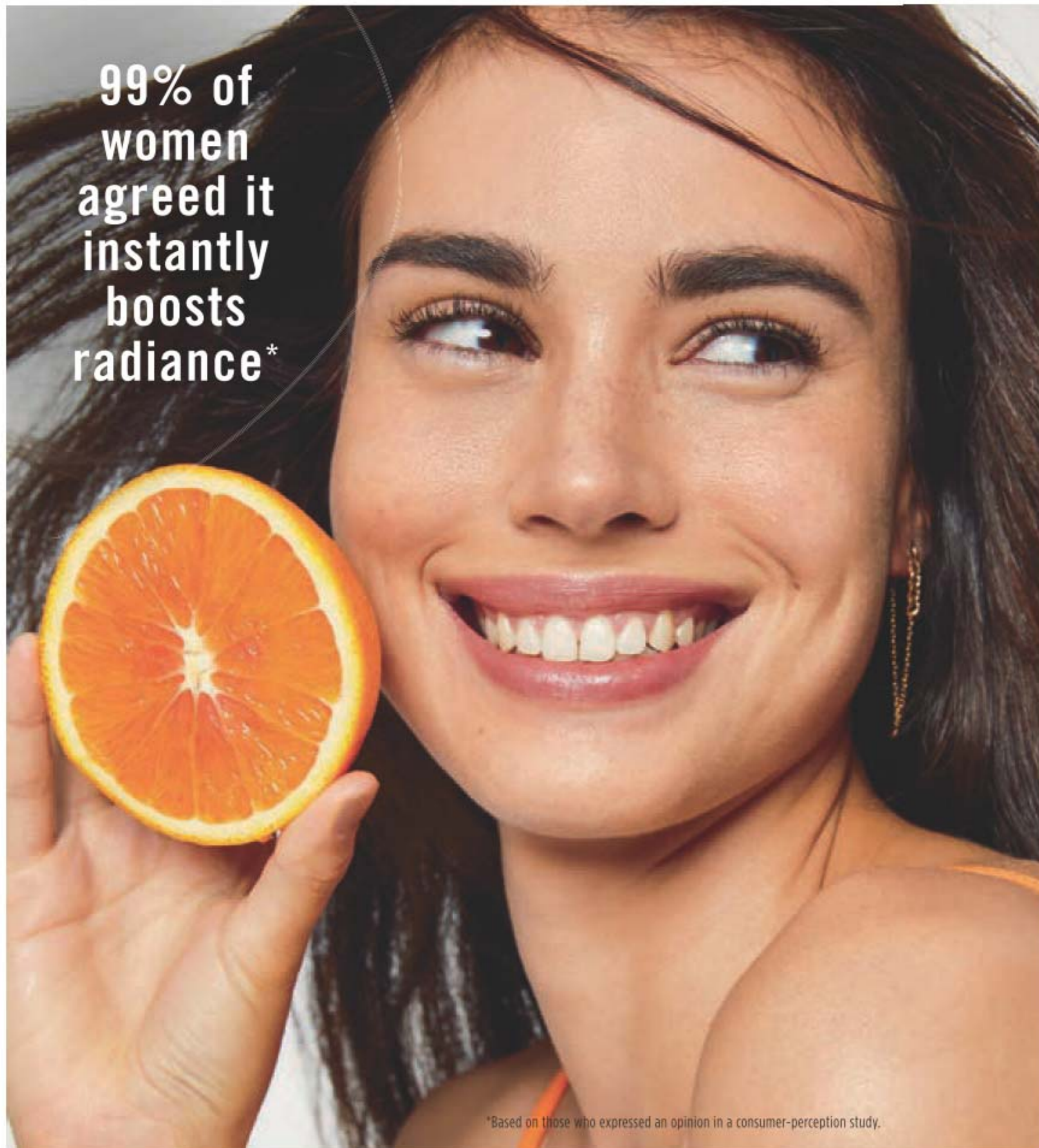
NEW

Vegan Blending Cream

A unique moisturizer comprised of one transparent gel and one rich cream layer, designed to work together effectively to deeply nourish skin. Refillable packaging. 60 ml 225-591-4
reg. 60.00
49.00

Blending Cream Refill (not shown)
60 ml 225-593-2
reg. 48.00
40.00

99% of women agreed it instantly boosts radiance*



*Based on those who expressed an opinion in a consumer-perception study.

see brighter skin instantly

Reveal the look of natural radiance.



Anew Vitamin C Brightening Serum
Skin looks visibly energized and brightened with the power of 10% pure vitamin C. Use AM and PM. Non-comedogenic. 30 ml
220-694-4
62.00 or...

ONLY 22.00
WITH EVERY 20.00 PURCHASE FROM THIS BROCHURE
(excluding page 107)

THE FACE SHOP - RICE WATER BRIGHT

Rice Bran Gentle Exfoliating Cleanser

Daily scrub with organic rice bran powder, rice bran oil and hydrated silica for gentle exfoliation to remove impurities and help skin feel soft and look fresh and radiant.

300 ml

223-093-3

reg. 23.00

19.00



Rice Water Bright Foaming Cleanser

Lathers up into a creamy foam to cleanse and moisturize in one. For dry, sensitive and normal skin. With rice water and soapwort extract that leave skin looking clear and bright.

300 ml

221-900-0

reg. 19.00

16.00



- Suitable for sensitive skin
- No need to rinse off

Mild Cleansing Water

Removes makeup and impurities with micelles. Tired-looking, dull skin appears radiant and revitalized.

500 ml

224-135-7

reg. 20.00

17.00

Large
500 ml



Cleansing Facial Wipes

Refreshing at home and on the go. With rice extract to moisturize while cleansing.

Removes eye makeup.

50 wipes.

221-900-8

reg. 16.00

13.00

50
wipes



facial massage cream

SKIN CARE

Rice Water Bright Facial Massage Cream

Moisturizes dry skin, helps visibly brighten complexion and helps boost elasticity and radiance. After cleansing, massage into skin 2-3 times a week.

200 ml

224-113-9

reg. 34.00

**LIMITED
TIME OFFER
19.99**



PROVIDES A HEALTHY GLOW

Free from 4 potentially harmful additives: paraben, tar, mineral oil and talc.

RICE & CERAMIDE MOISTURIZING COLLECTION

With eco-friendly mineral-enriched, gently exfoliating rice extract and rice bran, from pristine Yeosu in South Korea, and ceramide to help skin retain moisture.



Cream
A moisturizing cream that helps give skin a visibly translucent and healthy glow. Use AM and PM, after cleansing, toning and serum. 50 ml **225-757-9** reg. 13.00 **11.00**



Emulsion
Replenishes moisture instantly and for hours. Milky, non-sticky texture with a semi-liquid consistency. Use AM and PM, after cleansing, toning and before serum and moisturizer. 150 ml **224-123-2** reg. 12.00 **10.00**



Toner
A balancing and moisturizing toner. Use AM and PM, after cleansing, before serum and moisturizer. 150 ml **224-467-7** reg. 12.00 **10.00**

RICE WATER CLEANSERS

Refreshing Cleansing Oil

- For oily and combination skin
- Deep cleansing oil cleanses heavy makeup from skin with a light liquid texture



**Facial Light
Cleansing Oil**
With jojoba oil and rice water extract. Removes every trace of makeup and visibly brightens skin. 150 ml **225-531-8** reg. 20.00

**LIMITED
TIME OFFER
13.99**

**Facial Cleansing
Lotion**
Removes makeup and impurities. Skin looks clean and bright. 200 ml **225-531-3** reg. 18.00

**LIMITED
TIME OFFER
10.99**



Cleansing Lotion

- Suitable for all skin types
- Soft-textured lotion delivers a moisturizing effect without tautness even after cleansing

THE FACE SHOP - JEJU ALOE

Fresh Soothing Gel

With 95% aloe vera extract, instantly hydrates and soothes dry, sensitive skin. Infused with other soothing herbal extracts, like chamomile, lemon balm, rosemary and lavender. For face and body. 300 ml **225-126-5**
reg. 13.00
9.99



Fresh Ice Soothing Gel

3-in-1 gel with aloe vera extract. Use as a moisturizer, soothing after-sun care or as a facial mask. Can be refrigerated for more effective soothing results. Apply to dry, sensitive areas of face and body. 300 ml **223-093-5**
reg. 16.00
12.99



Fresh Soothing Mist

Instantly soothing and cooling facial mist for face or body, with 90% aloe vera extract. Oil-free and quickly absorbed. After cleansing, spray wherever skin feels dry. 130 ml **222-337-3**
reg. 23.00
18.99



Fresh Soothing Foam Cleanser

Gentle gel-to-foam formula hydrates as it cleanses. With aloe, panthenol, and other refreshing herbal extracts such as cica, camellia leaf, licorice root and rosemary. 150 ml **224-113-3**
reg. 11.99
9.99



a refreshing burst of cool

NEW

Sheet mask with aloe vera in a jelly-like texture hugs skin for a cool, hydrated feel.

Jeju Aloe Refreshing Face Mask
With soothing aloe, helps hydrate and nourish dry skin. 1 single-use sheet mask. **225-529-1**
reg. 4.25
3.50



SKIN CARE

clean formulated for your skin type

Vibrating cleansing brush cleanses 5X better*



❖ **Anew Clean Cleansing Brush**
Includes one brush head. Requires 2 AA batteries (not included). 17 cm L x 5 cm W. Plastic with nylon bristles. **223-158-8**
reg. 58.00
44.99

*Vs. cleansing by hand. Based on a clinical study with an ordinary cleanser.

Eliminates impurities and excess oil



Soothing Whipped Oil Cleanser
Gentle whipped oil formula contains panthenol (vitamin B5) and aloe. Mild amino acid-based ingredients derived from coconut. **For oily to normal skin.** 150 ml **223-124-6**
reg. 24.00
18.99

Creamy cleanser leaves skin feeling refreshed and hydrated

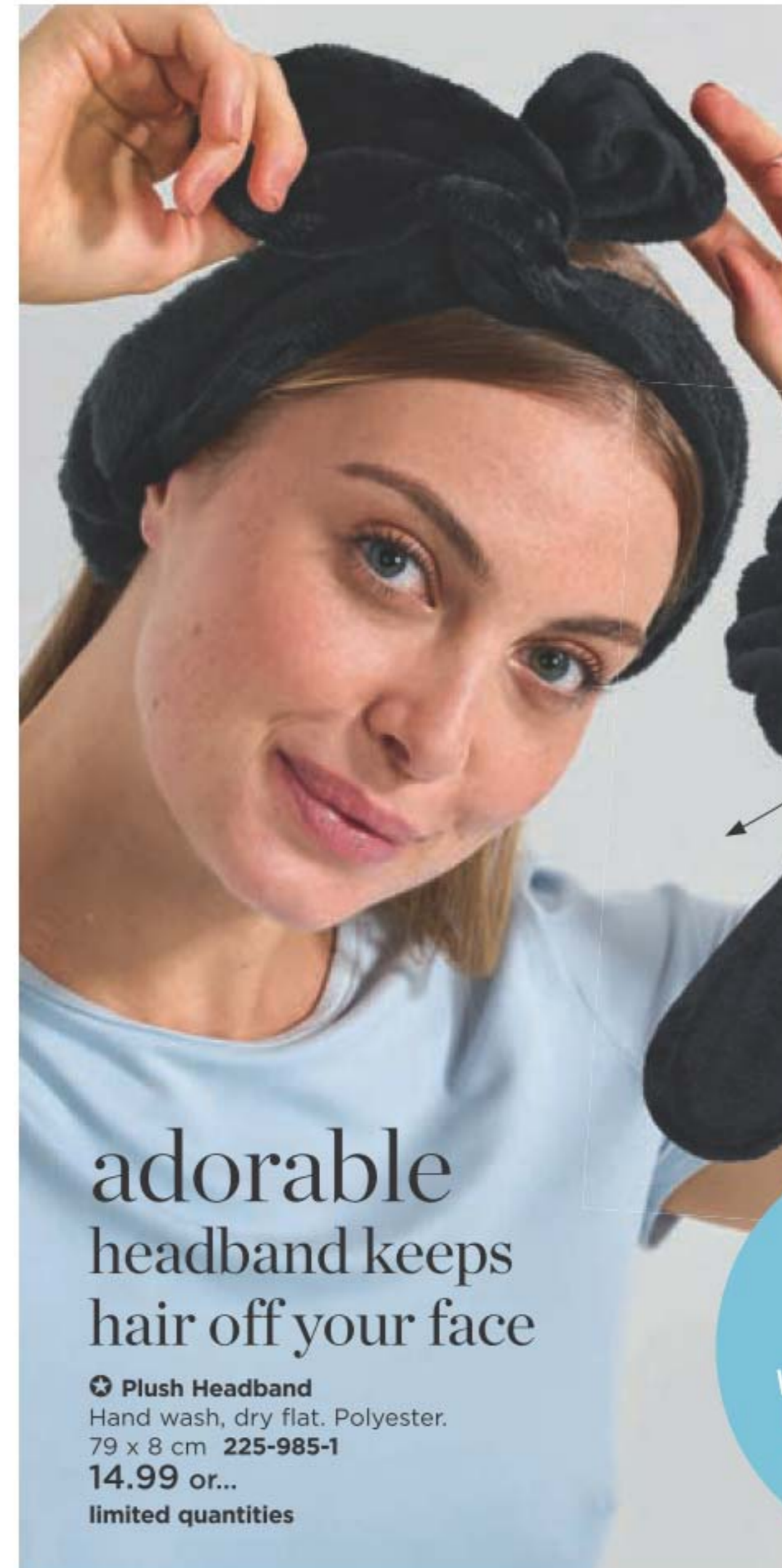


Nourishing Cream Cleanser
Luxurious cream cleanser infused with panthenol (vitamin B5) and soothing rosemary and soapwort extracts. **For normal, dry and combination skin.** 150 ml **222-986-2**
reg. 18.00
14.99

Leaves your complexion feeling clean, soft and healthy-looking



Balancing Gel Cleanser
Invigorating gel-to-foam cleanser with moisturizing panthenol (vitamin B5) rebalances the skin. Mild amino acid-based ingredients derived from coconut. **For normal dry and combination skin.** 150 ml **222-986-6**
reg. 18.00
14.99



Wrap it around your head and twist the tails for a comfy shape and fit



adorable headband keeps hair off your face

★ **Plush Headband**
Hand wash, dry flat. Polyester. 79 x 8 cm **225-985-1**
14.99 or...
limited quantities

ONLY 4.99

WITH EVERY PURCHASE FROM PAGES 78-119

(excluding Plush Headband)

THE FACE SHOP SHEET MASKS

Brightening

With pearl powder for a healthy-looking, luminescent glow.

225-126-9



Nourishing

With antioxidant-enriched propolis extract (tree sap, bee food and beeswax) to help restore healthy-looking vitality to tired skin.

222-242-9



Hydrating

With hyaluronic acid, which holds 1000 times its weight in water to help skin look youthfully plumped and baby-soft.

225-126-8



Firming

With marine (hydrolyzed) collagen, helps reduce the appearance of wrinkles and visibly restore firmness and radiance.

225-126-1



Packaging may vary.

Targeted treatment single-use face masks.

The Solution Advanced Face Mask

Light-as-air sheet mask hugs face snugly and comfortably. With patented amino-acid peels, which help support surface-skin turnover for fast absorption of other concentrated ingredients. 1 single-use sheet mask.

reg. 3.50

ONLY 3.00 each

Pore Care

With tannic acid, a natural astringent that helps reduce shine and shrink the look of pores.

225-126-7



SCENTED HAND CREAMS

Eco-friendly and vegan-certified.

SKIN CARE



1. Sunrise Bedroom
Bergamot, lavender and cedarwood.
226-031-7

2 Morning Florist
Lemon, Bulgarian rose and violet leaf.
226-032-0

3. Noon Park
Grapefruit, hyacinth and iris.
226-032-1

4. Sunset Rooftop
Pear, rose and patchouli.
226-032-2

5. Midnight Street
Cassis, black currant and amber.
226-032-3

6. Dawn Attic
Orange blossom, pimento and vetiver.
226-032-4

The Face Shop Daily Moment Vegan Hand Cream
Deeply moisturizing hand cream with a long-lasting scent. Vegan. 30 ml reg. 5.75

ONLY 4.50 each

THE FACE SHOP

Smile Foot Exfoliating Cream

Instantly removes dead skin cells and delivers a soothing effect. This gentle formula contains urea, a natural moisturizing ingredient, which leaves feet feeling soft and hydrated. Wipe off with towel after use. 120 ml
223-093-0
 reg. 17.99
14.99

Remove dead skin cells without having to rinse



Smile Foot Mask

Contains highly moisturizing urea, shea butter and collagen, plus peppermint oil for a refreshing sensation. Perfect for tired feet. Contains 2 single-use foot masks - 1 pair.
223-093-1
 reg. 6.99
5.99

Contains powerful, natural moisturizing ingredients



The Face Shop Smart Peeling Mild Papaya

Leave skin luminous. Mild peeling gel formulated with papaya enzymes and hyaluronic acid to softly exfoliate while hydrating. Use once or twice a week, after cleansing, massaging for 30 seconds to exfoliate. Rinse thoroughly. 150 ml
224-130-7
 reg. 17.00
15.00



The Face Shop Herb Day Cleansing Tissue

Removes makeup and impurities. With soapwort, lady's mantle, lily, chamomile, borage and cornflower. 20 wipes.
222-822-2
 reg. 4.00
3.50



BEAUTY ESSENTIALS

Silicone Eye Pads

SET OF 2

Pads can be used to hold gel, serum and cream close to the skin for maximum absorption. Reusable. 95% silica gel/5% other materials. Wash and air dry pads after each use. 7 x 3 cm
225-728-6
 reg. 15.00
5.99 the set
 limited quantities



Gel Eye Pads

Reusable gel eye pads help to combat tired, puffy eyes. Pad shell: EVA. Fill: distilled water, glycerin and EDTA.2Na. Each, 7 cm diam.
225-020-8
 reg. 15.00
9.99 the set
 limited quantities

SET OF 2
 use warm or cold



Jade Facial Massage Roller

Use to gently massage skin. Helps reduce the appearance of wrinkles and puffiness. Place roller in refrigerator for an extra cooling sensation. Jade/iron. 15 cm L x 6 cm W.
220-527-1
 reg. 20.00
7.99
 limited quantities



Use larger roller for cheeks, chin and forehead and the smaller for eye area

Helps reduce the look of puffiness and relieve stress.

Cooling Clay Eye Mask

For cooling comfort, store mask in the refrigerator at least 30 minutes before application. Natural clay/PVC/polyester. Reusable, non-toxic. Wipe clean. One size fits most. 18 x 8 cm
224-493-3
 reg. 18.00
9.99
 limited quantities



Clay side features a more intense cooling effect

Elastic band fits comfortably

Plush side provides a mild cooling effect

re:tune

Beauty is more than skin deep. It starts at your very core. re:tune helps you feel good on the inside so you look great on the outside. Key supplements help deliver nutritional support to help maintain a healthy radiant appearance.

re:tune Collagen Booster

Add one scoop to water, juice or coffee. Unflavoured. 30 servings. 75 g

226-002-3

reg. 55.00

29.99



HELPS
INCREASE
skin
elasticity
and reduce
wrinkles



helps to maintain healthy hair, skin & nails

re:tune Hair, Skin & Nail Health

Helps to maintain healthy hair, skin and nails. Source of antioxidants that help reduce cell damage caused by free radicals. 60 tablets
223-086-3
reg. 55.00

DIRECTIONS: (Adults):
Take 2 tablets daily, with food (containing oil/fat), a few hours before or after taking other medications or natural health products. Avoid taking at bedtime.



LIMITED
TIME OFFER
24.99



Create a general sense of tranquility and help promote serene thoughts with the soothing benefits of lavender essential oil.

PILLOW SPRAY helps you unwind and prepare for a good night's sleep.

❖ **Lavender Essential Oil**
Lift your mood and your spirit with the benefits of lavender essential oil. Calms and soothes. Paraben/gluten/phthalate/sulfate-free. Vegan. 10 ml
223-202-9
24.00 or...

❖ **Lavender Essential Oil Pillow Spray**
Spray lightly on your pillow for a soothing night's sleep. Shake well before use. Vegan. Not tested on animals. Petroleum/chlorine bleach/ammonia/phosphate-free.
115 ml **223-208-1**
27.00 or...

❖ **Fresh Lavender Natural Deodorant**
Non-whitening formula is tough on odours while being gentle on skin. 24-hour odour protection. Aluminium/paraben-free vegan formula. Suitable for sensitive skin. 50 g
224-070-0
9.00 or...

ESSENTIAL OIL add to a diffuser to fill the air with a soothing aroma

FRESH LAVENDER DEODORANT
pure vegan formula

• ALUMINIUM-FREE
• SANS ALUMINIUM
• PROTECTION 24 H



natural deodorant
AVON PURE
désodorisant naturel
FRESH LAVENDER LAVANDE FRAÎCHE

Aluminium-free, paraben-free
non-whitening formula. Suitable for sensitive skin.

50 g / net wt. 1.76 oz.

896-495-4
ALL 3 FOR
39.99

AVON PURE
CREATE A SENSE OF CALMNESS

MADE IN CANADA

Soothe and comfort wellness concerns with the use of a roll-on that you apply directly to your skin.

❖ **Avon Pure Roll-On Essential Oils**

- Paraben/gluten/phthalate/sulfate-free
- Vegan 10 ml

- Focus 223-206-1**
 - Energize 223-204-2**
 - De-Stress 223-204-8**
 - Detox 221-631-8**
 - Bodyguard 221-704-5**
- 24.00 each



100% natural aluminium-free deodorant

❖ **Natural Deodorant**

Non-whitening formula is tough on odours while being gentle on skin. 50 g

- Fresh Lavender**
(made with lavender oil)
224-070-0
 - Citrus Zest**
(made with citrus oils)
224-368-2
- 9.00 each



BOOST YOUR WELLNESS
with the rich properties of botanical essence.

- ❖ **Essential Oils**
Add a few drops to a diffuser to experience the benefits.
 - Paraben/gluten/phthalate/sulfate-free
 - Vegan
- 10 ml

Cinnamon
Uplifting scent of warm, spicy cinnamon.
225-675-1
24.00



Happiness
Infuse the air with joy. Blend of grapefruit, lemon and sweet orange.
225-531-5
19.00



Zen
Create a sense of tranquility with lavender, peppermint and chamomile.
225-531-4
27.00



Grapefruit
Brighten up your day with grapefruit.
223-206-3
24.00



Sweet Dreams
Create a serene environment with lavender and chamomile.
225-531-6
27.00



Peppermint
Stimulate and refresh your space with peppermint.
225-529-3
23.00



Eucalyptus
Refresh the mind with eucalyptus.
225-530-5
20.00



Rosemary
Energize your space with rosemary.
223-206-5
24.00



Tea Tree
Refresh and purify your surroundings with tea tree.
224-919-6
24.00



Lavender
Calm and soothe with lavender.
223-202-9
24.00



LAUNDRY ESSENTIALS

KEEP IT FRESH!

Give your bed linen and towels a wonderful, long-lasting scent.

❖ **Set of 3 Dryer Balls with Carrying Bag**

Place all 3 balls in the dryer with wet laundry. Each, 6 cm diam. Includes carrying bag for storage. Balls: wool. Bag: polyester. **225-751-9**
16.99 the set or...

❖ **Avon Pure Essential Oil Dryer Ball Spray**

Spray onto wool dryer balls (sold separately). Made in Canada. 115 ml **225-756-5**
24.00 or...



100% WOOL
dryer balls

SET OF 3
dryer balls
+ bag

896-483-3
BOTH FOR
35.00
PAGE 126

Wool Dryer
100% Wool

WELLBEING ESSENTIALS

soothing MASSAGE OILS

WELLNESS

Relax tired
muscles
and promote
a sense
of calm

Help
ease tense,
achy muscles
and joints



Infused with soothing lavender oil and vitamin E.

❖ **Avon Pure Lavender Massage Oil with Vitamin E**
Nourishes dry skin for a soft, silky smooth feel and a healthy-looking glow. With sweet almond, sunflower, rosemary and wheat germ oils. Pour half a cap into palm of hand, and massage gently into skin. 236 ml **226-232-1**
reg. 25.00

Formulated with stimulating eucalyptus oil.

❖ **Avon Pure Muscle & Joint Massage Oil with Eucalyptus**
Ideal for a deep tissue massage. Eases muscles and joints, restoring them back to health. With sweet almond, sunflower, rosemary and wheat germ oils as well as camphor, black pepper, vitamin E. Apply liberally to muscles and joints as needed. 236 ml **226-232-2**
reg. 25.00

ONLY 19.99 each

Fox
(topaz-coloured/
silvertone)
226-284-9

Butterfly
(purple/goldtone)
226-285-1

WILD FOR PAVÉ

Sparkling menagerie is sure to charm.

NEW

Whimsical Wildlife Collection
Coloured glass stones.

Delicate Necklace
Chain, 42 cm L with 9 cm extender. Pendant 3 cm L.
reg. 24.99
19.99 each

Peacock Blue
(blue/silvertone)
226-285-0



Peacock
(blue/silvertone)
226-285-3

NEW

Pull Cord Bracelet
One size fits most.
reg. 24.99
19.99 each

Fox
(brown/silvertone)
226-285-2

Butterfly
(purple/goldtone)
226-285-4

12-PAIR
earring pack

NEW

Mega Pack Earrings
12 pairs of pierced studs.
Coloured glass stones.
226-285-5
reg. 32.99
24.99 the pack



LOOKING SMART

A cute owl collection is always a wise choice.



A

NEW

Fillgree Chocolate Owl Collection
Pavé stones and chocolate plating set in silvertone.

A. Stretch Ring
Stretches to fit most.
226-265-1
reg. 18.99
14.99

B. Pendant Necklace
Chain, 42 cm L with 9 cm extender.
Pendant, 1 cm L.
226-264-8
reg. 32.99
24.99

C. Drop Earring
3 cm L drops.
Pierced. 226-265-0
reg. 16.99
13.99

D. Watch
Silvertone case with crystal accents, 24 x 36 mm. Black leather-like strap, 23 cm L. 226-298-5
reg. 74.99
56.99

E. Bracelet
With cz stones. One size fits most. Largest charm, 2 cm L. 226-264-9
reg. 24.99
19.99

B



E

C

D

3-BRACELET SETS



Yellow
(hope/goldtone)
226-220-6



Purple
(faith/silvertone)
226-220-4



Blue
(strength/silvertone)
226-220-5

NEW

Celestial Charms Collection
Mix of glass and acrylic beads.

Stretch Beaded Bracelet Set
3-bracelet set. One size fits most.
reg. 24.99
19.99 the set

Set of 3 Pairs of Earrings Pack
Silvertone hoops with purple star/blue pavé moon charms; goldtone with yellow sun charm. Largest, 4 cm L drop. Pierced. 226-213-7
reg. 24.99
19.99 the pack

3-PAIR earring pack



BOHEMIAN GLAMOUR

Bazaar chic meets worldly style
in a fabulously filigree collection.



NEW

Adorned Filigree Collection

Multi-coloured
glass stones set
in goldtone.

A. Necklace

42 cm L with 9 cm
extender.

226-284-6

reg. 44.99

32.99

B. Drop Earrings

5 cm L drops.

Pierced. 226-284-8

reg. 18.99

14.99

C. Stretch Bracelet

One size fits most.

226-284-7

reg. 24.99

19.99

2-PIECE SET necklace & earrings

NEW

Animal Impression Collection

Black cord with
Murano-like glass
beads and goldtone
plated accents.

Necklace and Earring Gift Set

42 cm L with 9 cm
extender. Pendant,

4 cm L. Pierced
drops, 2 cm L.

226-277-4

reg. 37.99

29.99 the set

❖ Faux Tiger's Eye Dial Watch

Black leather-like
faux croc strap,
23 cm L. Pavé
case, 32 mm diam.

226-124-9

reg. 68.99

54.99

Coil Bracelet

One size fits
most.

226-277-5

reg. 24.99

19.99

SOUTHWEST STYLE

Turquoise-like stones create that way-out-west vibe.



A
2-PIECE SET
necklace & ring

Ring stretches to fit most

NEW

Western Blossom Collection
Antiqued silvertone with turquoise-like and multi-coloured stones.

A. Necklace and Stretch Ring Gift Set
Chain, 42 cm L with 9 cm extender. Pendant, 3 cm L. Ring, 5 cm L; stretches to fit most. **226-213-4**
reg. 55.99
43.99 the set



B. Hoop Earrings
Pierced hoops, 4 cm diam. **226-213-6**
reg. 24.99
19.99

C. Stretch Bracelet
One size fits most. **226-213-5**
reg. 24.99
19.99

NEW

Naturally Neutral Collection
Goldtone with genuine quartz tiger's eye beads, blue and neutral glass beads, wooden beads and pearlesque accents.

Necklace and Earring Gift Set
49 cm L with 9 cm extender. Pierced drops, 1 cm L. **226-231-0**
reg. 55.99
43.99 the set

Earrings
Pierced, 4 cm diam. **226-231-1**
reg. 23.99
18.99

Stretch Bracelet Set
One size fits most. **226-231-2**
reg. 28.99
21.99 the set



2-PIECE SET
necklace & earrings

3-BRACELET set

NEW

Good Luck Charms Collection
Goldtone with glass pearlesque and white epoxy stones and the look of murano beads.

Y Necklace
With tan cord. 76 cm L with 9 cm extender. Dangling charms, up to 3 cm L. **226-132-6**
reg. 37.99
29.99

Hoop Earrings
Pierced, 3 cm diam. **226-132-7**
reg. 24.99
19.99

Corded Bracelet
With tan cord. One size fits most. **226-132-9**
reg. 28.99
21.99



SERPENTINE SPLENDOR

A classic pavé snake with emerald eyes is enchantingly timeless.



NEW

Serpent Pavé Collection

Crystal pavé and emerald-like glass stones set in goldtone.

Necklace

Chain, 42 cm L with 9 cm extender. Pendant, 2 cm L.
226-217-0
reg. 24.99
19.99

Earrings

2 cm L drops. Pierced.
226-217-6
reg. 18.99
14.99

Ring

3 cm L.
6 **226-218-8**
8 **226-218-9**
10 **226-219-0**
reg. 18.99
14.99



Ring sizer, page 138



NEW

Ivy Collection

Leaf pendant with the look of emerald and crystal stone accents set in silvertone.

Pendant Necklace

Chain, 42 cm L with 9 cm extender. Pendant, 3 cm L. **226-231-3**
reg. 24.99
19.99

Drop Earrings

Pierced, 3 cm L.
226-231-4
reg. 24.99
19.99

Flexible Cuff Bracelet

One size fits most.
226-231-8
reg. 24.99
19.99

Flexible cuff fits most wrists

STERLING SILVER

dark beauty

Genuine black onyx is embraced with sparkling cz stones.

NEW

Sterling Silver
Genuine Onyx Everyday Collection
Genuine onyx stone with cz accents set in sterling silver.

Necklace
Chain, 43 cm L with 3 cm extender. Pendant, 1 cm L; 1.25-carat equivalent.
226-318-9
79.99

Earrings
Studs, 0.75-total carat weight equivalent. Pierced.
226-319-0
76.99

Ring
1 cm W; 1.75-carat equivalent.
5 **226-319-1** 8 **226-319-4**
6 **226-319-2** 9 **226-319-5**
7 **226-319-3** 10 **226-319-6**
79.99



STAINLESS STEEL

iridescence

Genuine abalone shimmers with mother-of-pearl beauty.

GENUINE
abalone



NEW

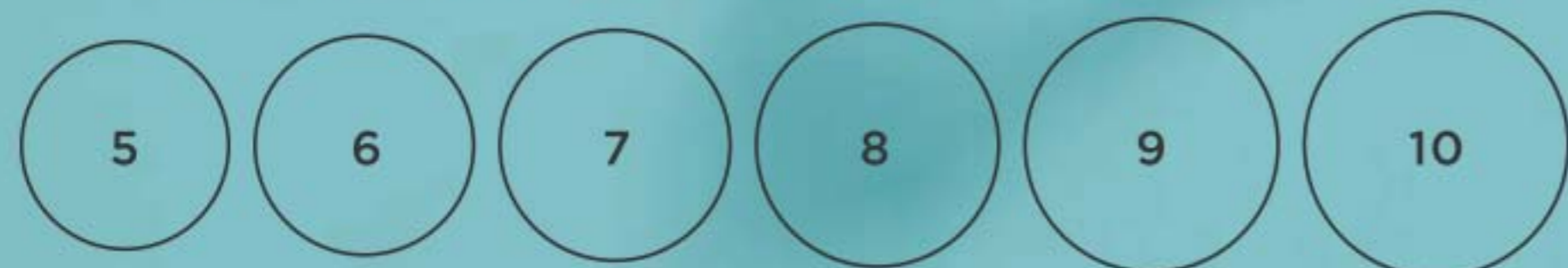
Stainless Steel Abalone Collection
Genuine abalone set in stainless steel.

Pendant Necklace
Chain, 43 cm L with 3 cm extender. Pendant, 3 cm L.
226-131-9
72.99

Drop Earrings
Pierced. 3 cm L.
226-132-1
52.99

Cuff Bracelet
One size fits most.
226-132-0
64.99

FIND YOUR RING SIZE match your ring to one of these circles





Crew neck
and cuffed
3/4-length
dolman
sleeves

Trendy tie-
front style

❖ **3/4-Sleeve Dolman Tie Bottom Top**

Centre back length: 67 cm on medium;
72 cm on 1X. Polyester/spandex.
Machine wash, dry flat.

S (4-6) 226-392-3	1X (18W-20W) 226-392-7
M (8-10) 226-392-4	2X (22W-24W) 226-392-8
L (12-14) 226-392-5	3X (26W-28W) 226-392-9
XL (16) 226-392-6	75.00

70.00

limited quantities



Features
geometric
print

Flared at the waist
for a relaxed fit

❖ **Short Sleeve T-Shirt Top**

Centre back length; 70 cm on medium,
72 cm on XL. Polyester/spandex.
Machine wash, dry flat.

S (4-6) 226-359-5	1X (18W-20W) 226-359-9
M (8-10) 226-359-6	2X (22W-24W) 226-360-0
L (12-14) 226-359-7	3X (26W-28W) 226-360-1
XL (16) 226-359-8	70.00

65.00

limited quantities



cargo jeans

Fashion forward style in
medium stone wash.



Two back
pockets

Cargo pocket
on each side
with button
closure

Fabric
moves to
give you
complete
mobility and
comfort

Flared
pant leg

NEW

❖ **Cargo Pocket Jean**

Cotton/polyester/spandex.
Inseam: 83 cm for all sizes.
Machine wash and dry.

6 226-438-9	14 226-439-3
8 226-439-0	16 226-439-4
10 226-439-1	
12 226-439-2	

80.00

18 226-439-5
20 226-439-6
22 226-439-7

85.00

limited quantities

NEW

❖ Skechers® Women's Cordova - Classic

White shoes with cushioned comfort insoles and shock-absorbing midsoles. Man-made materials. Half sizes, order one size up.

6M 226-309-1 9M 226-309-4
7M 226-309-2 10M 226-309-5
8M 226-309-3 11M 226-309-6

105.00

limited quantities

Synthetic
duraleather
uppers



Flexible traction outsoles

More
SKECHERS
available at
avon.ca

type *Skechers* in
the search bar

NEW

❖ Skechers® Women's Summits - Cool Classics

Black. Wied fit with cushioned comfort insoles. Man-made materials. Machine washable. Half sizes, order one size up.

6W 226-309-7 9W 226-310-0
7W 226-309-8 10W 226-310-1
8W 226-309-9 11W 226-310-2

95.00

limited quantities

Lightweight
shock-
absorbing
midsoles

WIDE
FIT



Flexible traction outsoles

Pull-on style
with stretch laces
and mesh uppers

NEW

❖ Skechers® Women's Vapor Foam™

Grey with light pink mesh uppers Sporty and lightweight with cushioned comfort insoles. Machine washable. Man-made materials. Half sizes, order one size up.

6M 226-310-3 9M 226-310-6
7M 226-310-4 10M 226-310-7
8M 226-310-5 11M 226-310-8

105.00

limited quantities

Sporty lace-up
style with mesh
uppers



Flexible traction outsoles

bucket hat

Full coverage hat with a narrow, downward-sloping brim helps shield you from sun, rain or sleet!

NEW

❖ Skechers® Ottoman Rose Bucket Hat

Black hat made from 70% recycled polyester. Polyester/spandex.

226-307-6

34.00

limited quantities

58 cm
circumference;
one size fits most



Rose gold
embroidered
logo on front



SKECHERS

cool comfort

Step out with miles of supportive, breathable comfort.



NEW

❖ Skechers® Women's Arch Fit™ - Infinity Cool

Charcoal with coral trim. Man-made materials. Machine washable. Half sizes, order one size up.

6W 226-312-1 9W 226-312-4
7W 226-312-2 10W 226-312-5
8W 226-312-3 11W 226-312-6

140.00

limited quantities



Removable insoles help mold to your foot

Lace-up design with engineered mesh uppers



Flexible traction outsoles



We also have men's SKECHERS at avon.ca

type *men's Skechers* in the search bar



Shock-absorbing lightweight midsoles

Easy slip-ons with mesh knit fabric uppers and scalloped collars



Flexible traction outsoles

NEW

❖ Skechers® Women's Seager - Stat

Cushioned comfort insoles. Machine washable. Man-made materials. Half sizes, order one size up.

6M 226-310-9
7M 226-311-0
8M 226-311-1
9M 226-311-2
10M 226-311-3
11M 226-311-4

100.00

limited quantities

NEW

❖ Skechers® Women's Slip Ins™ - Summits - Dazzling Haze

Navy/purple.

Lightweight, flexible shock-absorbing midsoles. Cushioned comfort insoles.

Machine washable. Man-made materials. Half sizes, order one size up.

6M 226-311-5
7M 226-311-6
8M 226-311-7
9M 226-311-8
10M 226-311-9
11M 226-312-0

115.00

limited quantities



Hands free design for an easy fit

Soft heathered jersey knit uppers with fixed stretch laces



Flexible traction outsoles

casual style for her

Complete your casual look with simple comfort and style.

NEW

❖ Skechers® Women's BOBS® - D Vine Navy. Cushioned comfort insoles. Machine washable. Man-made materials. Half sizes, order one size up.

6M 226-308-5 9M 226-308-8
7M 226-308-6 10M 226-308-9
8M 226-308-7 11M 226-309-0

73.00

limited quantities



Decorative knotted lace fronts



Soft canvas uppers with terry lining

Flexible traction outsoles with a fun pattern

SKECHERS

Treat your feet to all-day comfort and style with this 3-pair pack of sport socks.

NEW

❖ 3-Pair Pack of Sport Socks with Arch Support

White socks with sage, grey and pink details. Smooth toe. Fits shoe sizes 6-10. Polyester/rubber/spandex. Machine wash and dry. **226-357-4**

15.99 the 3-pair pack

limited quantities



Cushioned for comfort and shock absorption

3-PAIR PACK

Y heel and arch support for a better fit



2-PAIR PACK

❖ Shoe Liners - 2-Pair Pack

Light grey and light peach. Fits shoe sizes 6-10. Polyester/nylon/spandex. Machine wash, dry flat. **225-796-3**

7.99 pack of 2

limited quantities



No-show, ideal to wear with flats

NEW

❖ **Ultimate Cabin Socks**

Classic grey, cream and red. Fits shoe sizes 6-10. Polyester/cotton/rubber. Machine wash and dry.

226-357-7

9.99 a pair
limited quantities

Ribbed knee-length



NEW

❖ **Nordic Soft Tone Socks**

Grey, cream and pink. Fits shoe sizes 6-10. Cotton/nylon/spandex. Machine wash and dry.

226-357-5

7.99 a pair
limited quantities

Casual, comfort everyday socks

Trendy Nordic pattern



NEW

❖ **Roll-Top Casual Day Socks - 2 Pair Pack**

Fits shoe sizes 6-10. Machine wash and dry.

226-358-1

13.99 pack of 2
limited quantities

2-PAIR PACK

Non-binding roll tops



2-PAIR PACK:
one pair charcoal grey with pink dots and cream stripes,
one pair charcoal grey

sheer style

Add a delicate touch to your fall fashion.

NEW

❖ **Dot Patterned Sheer Mesh Crew Socks**

Fits shoe sizes 6-10. Cotton/nylon/spandex. Machine wash, dry flat.

226-357-2

6.99 a pair
limited quantities



Sheer with twisted stripes and dotted details

Solid black band, heels and soles

NEW

❖ **Floral Sheer Mesh Crew Socks**

Fits shoe sizes 6-10. Cotton/nylon/spandex. Machine wash, dry flat.

226-357-0

6.99 a pair
limited quantities

Sheer with pink floral details



Solid black bands, heels and soles

Compression and non-binding socks provide a comfortable fit and help support circulation.

Antimicrobial properties help prevent bacterial and fungal growth



non-binding socks

A. ❖ Non-Binding Comfort Socks
 Cushioned footbed with extra padding to help prevent injury. Anti-microbial properties help prevent bacterial and fungal growth. Fits shoe sizes 6-10. Polyester/cotton/rubber/spandex. Machine wash and dry. **225-262-4**
9.99 a pair
 limited quantities

NEW
B. ❖ Non-Binding Comfort Socks with Contrasting Colors
 Grey with lilac and orchid colour details. Smooth toe to avoid rubbing and injuries. Fits shoe sizes 6-10. Polyester/cotton/rubber/spandex. Machine wash and dry. **226-357-3**
10.99 a pair
 limited quantities

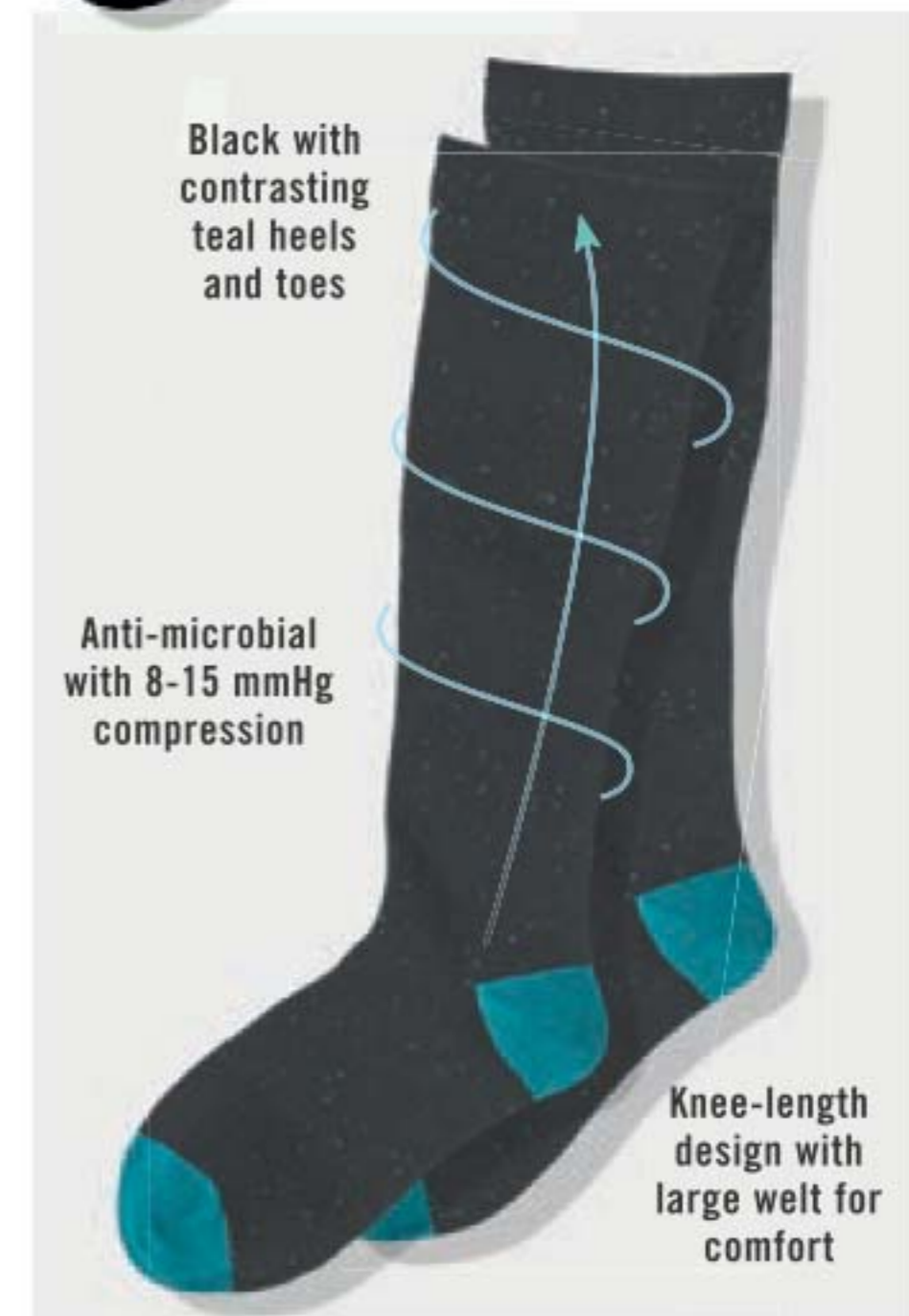


compression socks

Ideal for travel, or standing or sitting for long periods of time.

NEW
❖ Comfort Compression Socks
 Fits shoe sizes 6-10. Polyester/cotton/nylon/spandex. Machine wash, line dry. Kitten **226-357-9** Dog **226-358-0**
13.99 each pair
 limited quantities

NEW
❖ Comfort Compression Heel Toe Contrast Socks
 Helps improve circulation. Fits shoe sizes 6-10. Polyester/cotton/spandex. Machine wash, line dry. **226-358-2**
13.99 a pair
 limited quantities





leak-proof lid

removable ice pack

largest compartment holds 350 ml

smallest compartment holds 175 ml

❖ **Yogurt and Granola Container**
Dishwasher and microwave safe. BPA-free polypropylene.
226-405-5
12.99

❖ **Condiment Bowls-Set of 3**
Dishwasher and microwave safe. BPA-free polypropylene.
226-405-8
5.99 set of 3



Easy to open but seals tightly to prevent spills



3-PIECE SET



2 compartment container:
• smallest holds 59 ml
• largest holds 145 ml

❖ **Snack'n Dip Container**
Dishwasher safe. BPA-free ABS.
226-405-4
7.49



Included spreader snaps into the inner lid for easy storage



LEAK-PROOF

designs with silicone & valve closing systems



Ideal for soups, salads and pasta



Leak-proof design



Easy to secure



Holds 775 ml

Holds 177 ml

❖ **Snack Bowl**
Dishwasher and microwave safe. BPA-free polypropylene and silicone. Holds 775 ml
226-405-6
14.99

❖ **Small Snack Bowl**
Dishwasher and microwave safe. BPA-free polypropylene and silicone. Holds 177 ml
226-405-7
7.99

Perfect for families on-the-go; and helps with portion control of meals and snacks

All limited quantities.

powerful SOLUTIONS that keep your home fresh and clean!

❖ **Multi-Purpose Cleaner**

Bleach-free, triple-action power cleaner for the kitchen and beyond. With citric acid, orange oil and baking soda to remove stubborn water stains. Natural citrus scent. For use on nonporous surfaces only.

500 ml **223-134-0**
11.99

Refill Size
900 ml **224-106-0**
12.99



BEFORE



AFTER



MULTI-PURPOSE powerful grime fighter!

Customer favourite

Refill size

SPARKLE CENTRAL

❖ **Floor Cleaner**

Nozzle provides targeted application to apply directly to floor. Dries quickly for a streak-free shine. Fresh lavender scent. 750 ml
224-690-1
11.99

No need to dilute or rinse

❖ **Bathroom Cleaner**

Fights tough soap scum, limescale, calcium and grime. Triple-action low-pH formula safely breaks down and removes messes. 750 ml
222-708-9
12.99

JUST SPRAY let sit and wipe away!

❖ **Foaming Toilet Bowl Cleaner**

Fights toilet rings and stains. Convenient pouch dispenser. Use every two weeks. 60 g each pouch.
222-708-8
13.99
pack of 5

PACK OF 5 Powerful foam-cleansing action! Pour in, flush later!



FRESH FIJI

❖ Fabric Refresher with Wrinkle Release

Freshens fabrics and smooths wrinkles. Prevents static electricity. With corn derived dextrin for wrinkle control, green tea and persimmon leaf extracts for odour control. Clean laundry scent. 500 ml

Fresh 222-445-0
12.99



❖ Shoe Deodorizer

Eliminates tough odours on contact with the power of baking soda and persimmon. Great for all kinds of shoes, from leather to cotton.

300 ml
222-442-7
11.99



❖ Sheet Detergent

100% water soluble. With baking soda and natural fragrance oils. Works in all washers. For machine wash fabrics only.

Sheets can be cut depending on your laundry load. 30 fast-dissolving sheets, each 23 x 20 cm

Fresh 222-440-7
Lavender 223-206-7
22.99 each



Up to 60 loads*

❖ Laundry Detergent

Removes dirt you can't see. Uses a stain fighting solution to brighten and whiten and baking soda to help prevent odours for a deeper clean.

1 litre.
224-105-6
9.99



Up to 25 loads*

❖ Gel Bead Deodorizer

Neutralize odours. Each, 150 ml

Calming Lavender 225-770-4
Fresh Cotton 225-770-5
12.99 each



Neutralize odours for up to 70 days

❖ Fabric Softener

Softens, freshens, and protects clothes. Long-lasting rosewater and jasmine scent. Made with plant-based surfactants. Microplastic-free. Safe for skin and the environment.

50 loads. 1 litre
224-105-9
8.99



3X concentrated

Up to 50 loads*

*Based on regular loads on a standard machine.

SIRIUS GROOM

❖ Odor Eliminator

Removes the toughest pet odours from fabrics and carpets. Nature-derived ingredients including rice and barley to neutralize and absorb odours. Do not spray on pets.

400 ml
223-087-4
13.99



Long-lasting baby powder scents

❖ Pet Detangling Mist for Dogs

No-rinse detangling mist. Use on wet or dry fur. Gentle and effective for all breeds.

150 ml
224-717-0
13.99

❖ Pet Grooming Mist for Dogs

No rinsing necessary! Perfect for in-between washes. Gentle and effective for all breeds.

150 ml
224-716-9
13.99



❖ Shampoo for Dogs

Helps alleviate itchiness and dryness by washing away allergens. Formulated with oatmeal to help soothe skin. pH-balanced formula. Long-lasting scents. Nature-derived ingredients.

480 ml
Lovely Berry 223-087-2
Baby Powder 223-087-3
16.99 each

❖ Conditioner for Dogs

Rinse-off conditioner leaves coat soft and shiny. Soothes, hydrates and helps to alleviate itchiness. With aloe vera, vitamin E and oatmeal extract. Free from sulfates, colourants and silicones. Cruelty-free.

480 ml
Lovely Berry 224-716-5
Baby Powder 224-716-6
16.99 each





refresh

NEW

Avon Aromatherapy Bye-Bye Stress Body Lotion
 Take a moment to de-stress. With refreshing spearmint and eucalyptus fragrance oils for stress relief and mental clarity. 171 ml **225-533-1** reg. 24.00 **19.99**



relax

NEW

Avon Aromatherapy Sleep Tight ZZZ Body Lotion
 Unwind after a long day. With rose and lavender fragrance oils to help promote sleep and relieve anxiety. 171 ml **225-534-5** reg. 24.00 **19.99**



improve your wellbeing of mind, body & spirit

recharge

NEW

Avon Aromatherapy Bright Day Ahead Body Lotion
 Charge your day with positive energy. With citrus and ginger fragrance oils to uplift your mood. 171 ml **225-535-8** reg. 24.00 **19.99**



Set of 2



Avon Aromatherapy Minding My Mood 4-in-1 Essential Oil Blends
 Includes 2 oils. Each, 50 ml

Calm With comforting lavender and soothing star anise.

Energize With lively mandarin and stimulating ylang-ylang.

221-839-6
 reg. 44.00
35.99 boxed set of 2

SKIN SO SOFT

nourishing bath oils

Locks in hydration during a bath or shower and leaves skin feeling soft and smooth.

REGULAR
SIZE
500 ML



Soft & Sensual

With argan oil.
Spicy floral scent.

Comforting Shea

With shea butter
and oil. Vanilla,
sandalwood and
musk scent.

Original

With jojoba oil.
Fresh herbal scent.

Radiant Moisture

With argan oil. Peony
and musk scent.

Bath Oil

500 ml
Soft & Sensual
225-566-0
Comforting Shea
121-648-7
Original **225-567-3**
reg. 34.00
21.99 each

Bonus Size Bath Oil

739 ml
Soft & Sensual
107-736-1
Radiant Moisture
225-599-4
Original **107-681-5**
reg. 42.00
26.99 each

SKIN SO SOFT

lotions & shower gels

Bonus Size Body Lotion

1 litre
Supreme Nourishment 107-766-0
Radiant Moisture 226-505-2
Original 107-765-7
Soft & Sensual 226-505-5
reg. 28.00

19.99 each

Bonus Size Shower Gel

1 litre
Soft & Sensual 220-839-9
Radiant Moisture 220-840-0
Original 220-839-8
reg. 25.00

19.99 each

1 LITRE
BODY
LOTION

AVON
**SKIN
SO
SOFT**

**SOFT &
SENSUAL**

BODY LOTION
FOR DRY SKIN
LOTION
POUR LE CORPS
POUR PEAU SÈCHE

1 LITRE
SHOWER
GEL

AVON
**SKIN
SO
SOFT**

**SOFT &
SENSUAL**

SHOWER GEL
GEL DOUCHE



SKIN SO SOFT

Original Gelled Body Oil

Provides instant and lasting hydration with no sticky or greasy after-feel. Dries to a silky finish. 200 ml
107-681-4
 reg. 19.00
10.99



Soft & Sensual Gelled Body Oil

Provides instant and lasting hydration with no sticky or greasy after-feel. Dries to a silky finish. 200 ml
111-777-4
 reg. 19.00
10.99



Original Body Lotion

Provides 24-hour moisturization and instantly leaves skin looking and feeling nourished. 350 ml
107-594-7
 reg. 16.00
9.99



Soft & Sensual Body Lotion

Provides 24-hour moisturization and instantly leaves skin looking and feeling nourished. 350 ml
107-757-5
 reg. 16.00
9.99



Original Shower Gel

Gently cleanses and hydrates. 150 ml
107-681-0
 reg. 12.00
5.99



Supreme Nourishment Body Soufflé

Airy, coconut water-infused soufflé leaves skin feeling soft all day. 200 ml
221-206-6
 reg. 24.00
14.99



FOR FACE

A. Soothing Spot Gel

With rosemary, madecassoside and mint extracts. Leave on, dries clear. 15 ml
225-722-0
 reg. 24.00
17.99

B. Foaming Cleanser

Plant-based scrub with rosemary, madecassoside and mint extracts. 150 ml
225-721-9
 reg. 24.00
17.99

FOR BODY

C. Soothing Gel

Cooling sensation. With glycerin, allantoin and panthenol. Leave on, dries clear. 180 ml
225-665-7
 reg. 28.00
22.99

D. Exfoliating Body Wash

Non-drying, non-irritating. 300 ml
225-721-7
 reg. 28.00
22.99

E. Gentle Body Wash

Non-drying, non-irritating. With rosemary oil. 300 ml
225-665-4
 reg. 28.00
22.99

F. Body Pads

Pre-soaked exfoliating cotton pads. With hyaluronic acid and panthenol. 70 pads.
225-665-5
 reg. 42.00
34.99

SKIN SO SOFT acne-prone skin

Developed for all skin types with gentle exfoliating salicylic acid

Suitable for daily use and free of synthetic fragrances.



MOISTURE THERAPY

body lotion

dermatologist tested
hypoallergenic

1 LITRE
BODY
LOTION

**Moisture Therapy
Bonus Size Body Lotion**

1 litre
Daily Skin Defense
226-455-9
Calming Relief
120-011-8
Intensive Healing &
Repair
101-739-0
reg. 28.00
19.99 each



MOISTURE THERAPY

Intensive Healing & Repair

so intense!

healing moisture
that lasts 24 hours



VALUE
24.00



Moisture Therapy Pack
Includes:

- **Moisturizing Lip Treatment Stick** 4 g
- **Hand Cream** 125 ml
- **Extra Strength Cream**
With regular use, relieves the most severe dry skin conditions. 150 g

896-503-2
**GET ALL 3
FOR
8.99**
PAGE 167

THE WELL-STOCKED MEDICINE CABINET

For cuts, scrapes and burns

Poly Antibiotic Ointment

Helps prevent infection in minor cuts, scrapes and burns. Active ingredients: Bacitracin and Polymyxin B Sulfate. 28 g **223-103-0** reg. 19.99 **9.99**

Deep and potent pain relief

Arthritis Pain Relief Cream

Temporarily relieves aches and pains of muscles and joints associated with arthritis. Odour-free. Medicinal ingredient: Capsaicin, 0.107%. 42.5 g **223-102-6** reg. 19.99 **9.99**

Itch relief

Anti-Itch Cream

For temporary relief of minor irritations due to eczema, psoriasis and insect bites. Suitable for sensitive skin. Medicinal ingredient: Hydrocortisone, 0.5%. 56.7 g **223-102-7** reg. 13.99 **9.99**



BACK AND JOINT PAIN

Pain Relief Cream for Muscles, Back and Joints

Temporary relief of aches and pains of muscle and joints associated with backaches, lumbagos, strains and sprains. Medicinal ingredients: Methyl Salicylate, 30%, Menthol, 10%, Camphor, 4%. 56.7 g **223-101-1** reg. 13.99 **9.99**

Provides temporary relief



ELASTINE PROPOLITHERA

catch the buzz

Elastine PropoliThera is formulated to add new life to your hair. Sulfate/paraben-free, it infuses every strand with healthy-looking body and shine.

A. Hair Mask
Enriched with nutrients to help deeply nourish hair and mend damaged split ends. 300 ml
222-245-3
reg. 26.00
22.49 or...



B. Hair Oil Serum
Helps to strengthen, protect, moisturize and smooth hair, and to add shine, while styling. 170 ml **222-245-4**
reg. 26.00
22.49 or...

C. Damage Repair
Helps repair and soften damaged hair so it appears smooth and manageable. 500 ml
Shampoo 222-245-1
Conditioner 222-245-2
reg. 26.00
22.49 each or...

D. Volumizing
Adds weightless volume and enhances texture to make hair look fuller, thicker and stronger. 500 ml
Shampoo 222-244-8
Conditioner 222-244-9
reg. 26.00
22.49 each or...

E. Leave-In Conditioner
Hydrates and nourishes dry hair, infusing it with rich lustre. 240 ml **222-551-1**
reg. 27.00
21.00 or...

F. Rejuvenating Serum Treatment
Upon contact with water, nutrient-rich liquid visibly transforms into a creamy formula. 230 ml
222-627-0
reg. 31.00
26.00 or...

G. Curl Cream
Rich hydration for bouncy, defined curls. Reduces frizz for a smooth, healthy-looking shine. 150 ml **222-551-0**
reg. 27.00
21.00 or...

ANY 2 FOR 35.00 MIX OR MATCH PAGES 170-171

To get the 2 FOR price, order in multiples of 2.

ELASTINE PROPOLITHERA BEE CURLY

bee-utiful curls!

Helps care for curly hair to create silky, super-lustrous and shiny curls even after the first use. Plus 4X anti-frizz oil complex.

Elastine PropoliThera Bee Curly Shampoo 500 ml **224-348-5**
Conditioner 500 ml **224-348-6**
Serum 150 ml **224-348-9**
 reg. 41.00
34.99 each or...



ANY 2 FOR 40.00

PAGE 172
 To get the 2 FOR price,
 order in multiples of 2.

ELASTINE PERFUME

luxuriously scented

2-in-1 shampoo & conditioner

Moisturizes hair while controlling oil-derived odours.



Elastine Perfume 2-in-1 Shampoo & Conditioner
 Paraben/sulfate-free. Suitable for daily use.
 250 ml

Love Me
 Jasmine and ylang-ylang.
224-812-2

Fresh Citrus
 Lime, mandarin and basil.
224-813-2

Pure Breeze
 White rose and Bulgarian rose.
224-812-3

reg. 23.00
17.99 each or...

ANY 2 FOR 25.00

PAGE 175
 To get the 2 FOR price,
 order in multiples of 2.

ELASTINE BOTANICALS

dry hair?

Cherry Blossom & Hyaluronic Acid Moisturizing

Moisturize dry, damaged hair with our hyaluronic acid-infused formula as thirsty strands drink it up. 200 ml
 Shampoo **225-540-0**
 Conditioner **225-540-2**
 reg. 8.00
6.29 each or...



frizzy hair?

Argan & Castor Anti-Frizz

With nourishing ingredients, helps protect hair from damage and breakage, and enhances hair's natural lustre and smoothness. 200 ml
 Anti-Frizz Shampoo **225-509-9**
 Conditioner **225-510-6**
 reg. 8.00
6.29 each or...



want volume?

Rosemary & Sea Salt Volumizing

With rosemary to help promote thicker and healthier hair, and sea salt to add body. 200 ml
 Shampoo **225-540-3**
 Conditioner **225-540-4**
 reg. 8.00
6.29 each or...

ANY 2 FOR 10.00

PAGE 174
 To get the 2 FOR price,
 order in multiples of 2.

ELASTINE

volume & shine

See healthier hair instantly.

Moisture Essentials Shine Hair Oil Serum argan oil

Helps to replenish dull, dry and weak hair, tames frizz and seals split ends. 75 ml **224-076-3**
 reg. 12.50
9.99 or...

Moisture Essentials Shine

ceramide + argan oil
 Argan oil-infused formula, with vitamins and antioxidants. 375 ml
 Shampoo **224-076-1**
 Conditioner **224-076-2**
 reg. 12.50
9.99 each or...



shine

Moisture Essentials Volume

ceramide + biotin
 Biotin-infused formula helps dry, damaged hair look and feel thicker, fuller and healthier. 375 ml
 Shampoo **224-075-9**
 Conditioner **224-076-0**
 reg. 12.50
9.99 each or...



volume

ANY 2 FOR 17.00

PAGE 175
 To get the 2 FOR price,
 order in multiples of 2.

ELASTINE / ADVANCE TECHNIQUES

Elastine Hempharmx Weightless Hydration Shampoo

Vegan formulas. Both are silicone-free. Shampoo is sulfate-free. 400 ml
222-687-3
 reg. 34.00
28.00



Elastine Hempharmx Weightless Hydration Conditioner

Vegan formulas. Both are silicone-free. Shampoo is sulfate-free. 400 ml
222-687-4
 reg. 34.00
28.00



Silicone Scalp Massager

Use while shampooing for a gentle massage or to evenly distribute treatments throughout hair. 10 x 8 x 7 cm. Polystyrene/TPR.
222-672-4
7.99

limited quantities



Ergonomic handle

Daily Shine 2-in-1 Shampoo & Conditioner

Leaves hair feeling clean and conditioned. With pro-vitamin B5 for radiantly healthy-looking shine, silky feel and a sleek, frizz-free long-lasting finish. Suitable for daily use. 350 ml
224-986-0
 reg 15.00
9.99



360 Nourish Leave-In Treatment with Moroccan Argan Oil

Leave-in treatment for all hair types, leaves hair looking softer and healthier. Formulated with argan oil, provitamin B5 and vitamin E, it helps to nourish and smooth, dry, damaged hair. 60 ml
119-335-1
 reg. 22.50
15.49



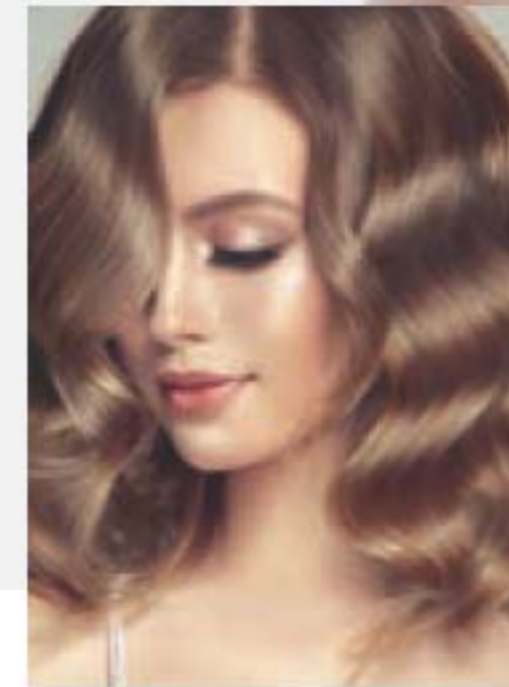
Daily Shine Dry Ends Serum

Leaves hair soft, silky, smooth and healthy-looking. Can also be used on dry hair to smooth away frizz or flyaways. 60 ml
243-496
 reg. 16.00
11.99



curling rods

Easy to use and comfortable. Can be worn overnight! Prevents breakage and keeps hair frizz-free.



HAIR CARE

Can be used on wet or dry hair

Create perfect waves and curls

- section hair
- wind hair around a rod until you reach the scalp
- bend the ends of the rod to secure in place

Flexible Curling Rods

Black. PP/foam/polurethane/iron. **225-664-9**
12.99 set of 12
 limited quantities



styling
blow out

Perfect for
at-home
or travel

CONAIR®

MID-SIZE DRYER

- Two heat settings and two speeds for styling control
- Concentrator for spot-on styling
- Cool shot sets style in place for all hair types

NEW

❖ **Conair® 1875 Watt Hair Dryer**
Powerful mid-size hair dryer combines performance with convenience. 1875 watts. 1.5 metre (5 feet) cord. Electrical. **226-415-6**
29.99
limited quantities

get bouncy,
glam curls



1 1/4" (32 MM) STYLING IRON

- 60-second instant heatup*
- Multi-layer technology delivers healthier, longer-lasting curls
- Auto-shutoff
- Variable heat settings for every hair type

CONAIR®

*Unit will not reach stabilized temperature within 60 seconds.



Cool
tip

Kickstand

On/off
touchpad
with "on"
indicator
light

❖ **Conair® Instant Heat Styling Iron**
Uniform Heat Recovery system automatically restores barrel temperatures to the optimum level for consistent styling results. Dual-voltage. Tangle-free swivel cord. 1.5 metre (5 feet) cord. Electrical. **225-981-6**
29.99
limited quantities

CHI® PRO STYLERS

BioSilk® Silk Therapy® Leave-In Treatment

Tames frizz and flyaways and leaves hair silky smooth with reflective shine. Helps shield hair from UV rays, heat and humidity. 167 ml
222-387-5
reg. 48.00
39.00



Smooth
as silk...
weightless,
leave-in
silk
treatment

ENVIRO 54® Natural Hold Hair Spray

Thermal protectant ideal for blow drying. With silk to help build hair's strength and resilience, and natural botanicals to add volume and enhance shine. Paraben-free. 284 g
222-539-3
reg. 38.00
31.00



Lightweight
and fast-drying
with no build-up

❖ Advanced Ionic Compact Hair Dryer

Powerful 1875-watt ion generator emits negative ions to reduce drying time for shiny, smooth, frizz-free hair. Adjustable heat and air-speed settings. 1.9 metre (6 feet) cord. Electrical. 222-337-9
reg. 175.00
159.00



❖ Volcanic Lava Ceramic Pro Spin 'n' Curl

2.5 cm (1") pro automatic rotating curling device. Preset temperature controls with adjustable timers and LED screen display, for all hair types. 30 cm L. Dual voltage for travel. 3.35 metre (10 feet) swivel cord. Electrical. 222-338-1
reg. 210.00
189.00



CHI® ESSENTIALS



REVIVE KERATIN

bonding collection

Restoring Shampoo

Cleanses, moisturizes and protects against split ends and frizz. 355 ml 224-991-6
reg. 35.00
27.99

Restoring Conditioner

Helps restore dry, damaged and brittle hair. 355 ml 224-991-7
reg. 35.00
27.99

Protecting Serum

Apply to damp or dry hair for smoothness and shine as a finisher and UV protectant. 88 ml 224-991-8
reg. 59.00
48.99

Replenishing Shampoo

With panthenol to help strands retain moisture. Safe for dry colour-treated hair. 355 ml 222-707-3
reg. 28.00
22.50

Moisturizing Conditioner

With panthenol (vitamin B5) to help strengthen hair, smooth split ends and fight frizz. 355 ml 222-707-4
reg. 28.00
22.50

Repairing Serum

With rosemary to help repair split ends and enhance shine. 177 ml 222-707-5
reg. 46.00
37.00





ELASTINE SALON DE COLOR

kick brass

Keep hair colour looking vivid and brass-free. Infuses hair with healthy-looking shine.

WHAT'S IN IT:

- **ultra-violet pigment** helps neutralize brassy yellow and orange tones
- **camellia oil & green tea extract** helps protect hair
- **hydrolyzed keratin • panthenol • collagen** helps repair weakened and damaged hair
- **hyaluronic acid** helps hydrate hair and scalp and reduce frizziness
- **apple cider vinegar** helps boost radiance

Color Vibe
Non-irritating formulas. 250 ml
Purple Shampoo **225-066-9**
Purple Conditioner **225-067-1**
reg. 24.00

LIMITED TIME OFFER
16.99 each



HAIR CARE & STYLING TOOLS

clear the hair!

Hairbrush Cleaner
Stainless steel/polystyrene.
9 x 2 cm
225-084-9
4.99
limited quantities



Stainless steel metal bristles

Ergonomic handle



Easily remove tangled hair from brushes

HAIR CARE

Securely holds large sections of hair without crimping



Sturdy clips hold hair up keeping your hands free for styling, drying or colouring

Set of 3

set & style like a pro!

Alligator Hair Clips
Set of 3 clips.
ABS/stainless steel/aluminium.
Each, 11 cm L.
225-806-3
4.99 set of 3
limited quantities

DELUXE SHOWER CAP

Generously sized for all types of hair.

Deluxe Shower Cap
Minimizes frizz. One size fits most. Polyester/spandex/PEVA. Hand wash, hang to dry.
225-663-6
12.99



Protects hair from water and humidity with a comfortable secure fit

sleeping beauty



Helps keep hair healthy, shiny with less breakage

Vented brush is designed to speed blow drying and add volume.

Vented Circle Brush
Specially designed vent ports work to channel airflow when used with a blow dryer.
ABS/nylon. 23 x 10 x 3 cm
223-973-6
10.99

limited quantities



Anti-slip handle

Flexible anti-snag bristles

Lightweight Hair Scissors
Trim split ends and bangs between salon appointments.
Stainless steel. 17 cm L.
224-646-0
17.99
limited quantities



Adjustable screw allows for tension control

Ergonomic offset handle for comfort



Soft fabric allows skin to breathe and prevents sleep creases

Features flap to secure pillow

Minimize frizz with our luxurious satin pillowcase. The gentle fabric helps to keep hair shiny and tangle free!

Good Hair Day Satin Pillowcase
White, soft satiny pillowcase. Fits a standard size pillow. Polyester. Machine wash, hang to dry. 51 x 66 cm
224-087-9
11.99
limited quantities

WELLBEING ESSENTIALS

Removes body hair and provides a gentle exfoliation.

Crystal Hair Removal

Rub hair remover in circular motions onto desired areas, while applying a moderate amount of pressure. As the crystals rub on skin, the hairs clump together and break from skin's surface, leaving behind smooth and hair-free skin. ABS/glass (nano crystals). 10 x 7 x 3 cm

226-211-3

14.99
limited quantities



Door hook with clear faceted acrylic gem slips over the door for easy hanging.

Gem Door Hook

Hangs on doors 4 cm thick or less. Iron with silver chrome plating/acrylic. 13 x 13 x 11 cm

225-752-5

7.99
limited quantities

Great space-saving option!



Temple massager helps relieve tension.

Scalp and Temple Massager

Polypropylene. 18 x 8 cm

225-972-5

8.99
limited quantities



FOR TEMPLE
use the roller of the handle to release pressure

Just let the flexible, smooth-tipped wires massage your scalp.

Head Massager

9 cm W x 24 cm H. Aluminum/stainless steel/resin/iron.

223-229-2

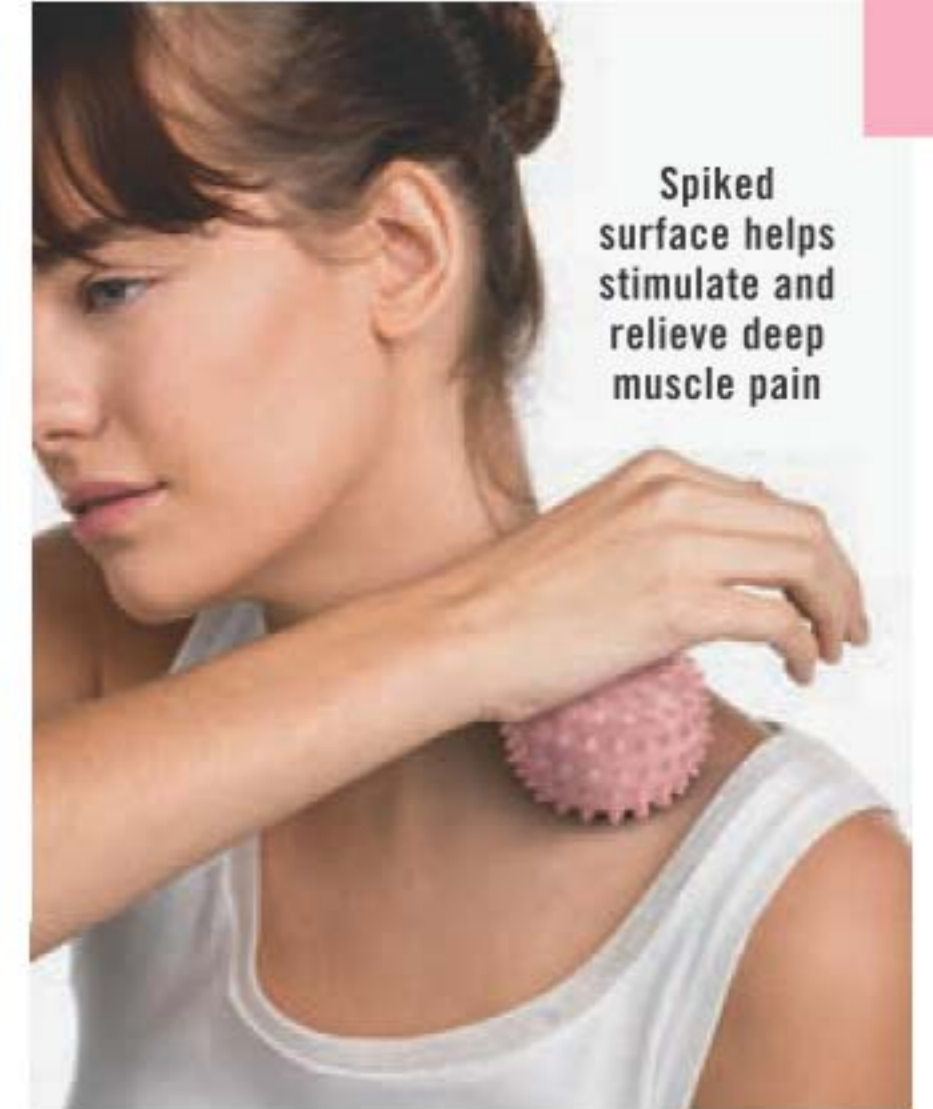
6.50
limited quantities



WELLBEING ESSENTIALS

massage balls

At-home therapy for muscle pain and pressure points.



Spiked surface helps stimulate and relieve deep muscle pain



2-PIECE SET

Therapy Massage Balls

Do not use for longer than 20 minutes at a time. 7 cm diam. PVC.

225-935-7

19.99 the set
limited quantities



Smooth surface relaxes tired muscles

step up your foot care

Callus Remover

Unique curve and wide surface make this tool easy to use. Stainless steel micro-file effortlessly removes rough calluses. ABS/rubber/stainless steel. 27 x 7 cm
222-621-7
12.99
 limited quantities



Long ergonomic handle

Chevron Grip Toenail Clipper

Trim toenails with ease and precision. Sharp curved blades for precision clipping. Stainless steel. 8 cm L. **224-070-1**
6.99
 limited quantities



Slim Foot File

Effectively removes dry and hard skin on the ball of the foot. Polystyrene/sandpaper/silicone. 19 x 4 cm
225-664-1
7.99
 limited quantities



Silicone loop for hanging

Mini Foot File

Use on damp feet to remove dead skin. Polypropylene/stainless steel. 18 x 4 cm
225-895-2
5.99
 limited quantities



Slender end for targeted area and nails

Large Curved Foot File

Effortlessly remove rough calluses. Use on damp feet to exfoliate for smoother, softer skin. Polypropylene/sandpaper. 21 x 9 x 4 cm.
225-664-3
9.99
 limited quantities



Unique curve cradles the heel

Foot Works Pedicure Kit

Compact kit for perfect pedis! Metal/man-made materials. Case, 9 x 12 cm
441-304
 reg. 16.00
11.99 the kit



Foot Works Pedicure Tool

Tool features: fine grain file, metal file, brush and pumice stone. Plastic. 8 x 4 x 4 cm
102-612-1
 reg. 16.00
11.99



reflexology

is based on a centuries old healing art



Gently apply pressure by using small, circular motions to help relieve tension in targeted areas.

These socks are a printed map of your reflexology zones - the organs connected to the pressure points of your feet.

Reflexology Socks

Crew-length socks with reflexology diagram printed on soles. Fits shoe sizes 6-10. Machine wash, hang dry. Polyester/spandex. **222-242-2**
9.99
 limited quantities



FOOT WORKS

Arthritis Achy Foot & Muscle Cream

Provides warming pain relief. Contains glucosamine and chondroitin. 75 ml
117-059-3
reg. 10.00
6.99



Antifungal Spray for Athlete's Foot

Helps relieve itching and burning of athlete's foot and controls odours. 100 ml
223-885-4
reg. 13.00
8.99



Intensive Moisture Foot Cream

Gentle, mild and suitable for sensitive skin. 75 ml
116-647-9
reg. 10.00
6.99



FOOT WORKS hard-working formulas for hard-working feet

discover the best in foot care

Your feet deserve to be taken care of!



Overnight Renewing Cream

Conditions while you sleep. With jojoba oil. 100 ml **116-647-7**
reg. 13.00
8.99 or...

Deep Moisturizing Cream

24-hour moisturization. 75 ml **116-648-2**
reg. 10.00
6.99 or...

Deodorizing Spray

Can also be used in footwear. 100 g
116-648-6
reg. 14.00
8.99 or...

896-495-3

**GET ALL 3
FOR
14.99**

PAGE 191

PROFESSIONAL HAIRCUT KIT

Number coded comb guides for a professional result and self-sharpening stainless steel blades.



Corded with a long-lasting magnetic motor includes drawstring pouch

20-PIECE HAIRCUT KIT



ACCESSORIES:

- Ten comb guides
- Two styling clips
- Barber scissors
- Barber comb
- Barber cape
- Lubricating oil
- Cleaning brush
- Blade guard (not shown)

❖ Conair® for Men® NUMBER CUT® Haircut Kit

Easy-to-use haircut kit will save you time and money with fewer trips to the barber. Plastic/metal.
225-791-6
29.99 the kit
 limited quantities



Fast, safe and easy way to groom tricky areas like the nose, ears and eyebrows!

❖ ConairMan™ Respect the Ritual™ Nose and Ear Trimmer
 Requires 1 AA battery (not included). Plastic/metal.
225-728-7
14.99
 limited quantities



- No pulling, no pain
- Compact and lightweight
- Stainless steel blades
- Comes with a protective cover

IDEAL FOR TRAVEL

DAILY ESSENTIALS

Lip Balm 4 g

Véilment Care Lip Balm

Coconut (with coconut oil) **223-132-1**

Aloe (with aloe extract; grape-flavoured) **223-132-2**

Cherry (tinted) **226-452-9**

reg. 3.00

1.99 each

Flavor Savers

Vanilla **221-971-9**

Melon **221-971-8**

Moisture Therapy Intensive Healing & Repair Moisturizing Lip Treatment Stick
226-451-8

reg. 3.00

1.99 each

Sun+ Lip Balm

224-362-7

Skin So Soft Supreme Nourishment Coconut Oil
222-944-3

reg. 3.00

1.99 each



DAILY ESSENTIALS



Stay fresh
ALL DAY!

Roll-On Anti-Perspirant Deodorant 75 ml
5.00 each or...

**ANY 2
FOR
5.99**

PAGE 195

To get the 2 FOR price,
order in multiples of 2.

Provides
long-lasting
**ODOUR
PROTECTION**

Perfumed Liquid Deodorant

Delicate, floral scent. Aluminum-free, quick-drying formula. Easy fingertip application. 59 ml

298-088

reg. 9.00

5.99

**Anti-stain
formula**



VÉILMENT NATURAL SPA

body scrub & cleansers

World-class spa experience with natural ingredients sourced from around the world for the ultimate veil of moisture.



Calming sage scent

Véilment Natural Spa Himalaya Pink Salt Exfoliating Soap

Mineral-rich Himalayan pink salt, walnut shell, apricot seed and cranberry powder. 150 g **222-462-0** reg. 12.00 **8.50**



Comforting coconut scent

Véilment Care Moisturizing Bar Soap

Plant-based soap, derived from olive oil and infused with coconut oil, moisturizes as it gently cleanses, leaving skin beautifully soft and delicately scented. 80 g **226-348-9** reg. 3.50 **2.79**



Black Rose Body Scrub & Cleanser
French rose oil and apricot seed powder. 400 ml **221-902-1** reg. 21.00 **18.00** or...



Himalaya Pink Salt Body Scrub & Cleanser
Mineral-rich Himalayan pink salt. 400 ml **226-075-8** reg. 21.00 **18.00** or...



Dead Sea Salt Body Scrub & Cleanser
Israeli Dead Sea salt. 400 ml **226-076-0** reg. 21.00 **18.00** or...



Glacier Water Cooling Body Scrub & Cleanser
Cooling menthol and a clean peppermint scent. 400 ml **226-060-1** reg. 21.00 **18.00** or...

NEW
Exfoliating body wash that cools and refreshes

SCRUB & CLEANSERS
2 FOR 30.00
To get the 2 FOR price, order in multiples of 2.

TLC for your hands!

Skin So Soft Hand Cream
100 ml
Original **107-728-6**
Radiant Moisture **107-728-7**
Soft & Sensual **114-351-6**
reg. 7.00
3.99 each



Moisture Therapy Hand Cream
125 ml
Daily Skin Defense **101-614-9**
Calming Relief **101-614-8**
Intensive Healing & Repair **101-615-3**
reg. 9.00
3.99 each



Avon Care Silicone Glove Protective Hand Cream
100 ml
225-718-6
reg. 9.00
3.99



Finger massager

FOR FINGERS
gently place finger between the rollers and glide the massager up and down, focusing on the knuckle area.

FOR HANDS
glide the roller between your thumb and finger area.

Finger Massager
14 cm L x 3 cm W.
Polystyrene/
thermoplastic
rubber. **225-919-2**
9.99
limited quantities

shower power

Gently cleanses without drying.

Hydrating Shower Gel
150 ml
Juicy Pomegranate & Mango **108-471-4**
Silky Vanilla **108-470-6**
Blushing Cherry Blossom **108-425-2**
Fresh Cucumber & Melon **108-427-5**
reg. 9.00
5.99 each



cool down & unwind with a long bath!



Avon Senses Bubble Bath

Luxurious bubbles
caress your skin, leaving
you relaxed, cleansed
and softly scented.
Up to 24 pampering
baths in every bottle.
Dermatologically-tested.
700 ml

Cherry Blossom

109-259-8

Lily & Honeysuckle

Blossom **109-228-8**

Soft Pink **109-260-2**

Endless Ocean

109-260-1

Lavender Garden

109-282-3

Orange & Honeysuckle

109-259-7

reg. 16.00

9.99 each

Soak your stress away

Tranquil Moments Relaxation Foam Bath
Unwind daily with softly scented bubbles. 700 ml **232-501** reg. 20.00 **10.99** or...

BIG
700 ML



2 FOR 20.00
PAGE 202
To get the 2 FOR price, order in multiples of 2.

TRANQUIL MOMENTS

Soothe your senses with a serene blend of sheer bergamot, jasmine, rich florals and sandalwood.



Tranquil Moments Room Spray
Spray into the air around your home. 100 ml **224-362-6** reg. 14.00 **6.99** or...

2 FOR 11.99
PAGE 203
To get the 2 FOR price, order in multiples of 2.

SHOWER UP IN TROPICAL SCENTS

Enriched with **vitamins E and B5** to help leave skin feeling soft and smooth.



Alo Fruits & Passion Shower Gel BONUS SIZE
Leaves skin feeling soft, smooth and delightfully scented 950 ml
Grapefruit Guava **223-886-4**
Orange Cantaloupe **223-886-2**
Ocean Flower **223-886-3**
Pear Peony **225-658-8**
Pink Coconut **225-537-2**
reg. 25.99

LIMITED TIME OFFER
19.99
EACH

ECO-FRIENDLY CLEANERS

Biodegradable formulas. No animal testing.
Soft on your hands as it is on the environment.



Safe and effective on any non-porous surface, including natural stone.

❖ **CUCINA FRUITS & PASSION All-Purpose Cleaner**
500 ml

NEW! Peach and Mandarin
226-357-1

Lime Zest and Cypress **222-614-8**

Coriander and Olive Tree **222-614-7**

reg. 12.00

9.00 each

Concentrated formulas, only a few drops are required.

❖ **CUCINA FRUITS & PASSION Concentrated Dish Detergent**
500 ml

NEW! Peach and Mandarin
226-356-7

Coriander and Olive Tree
222-712-7

Sea Salt and Amalfi Lemon
222-396-0

Lime Zest and Cypress
222-395-7

reg. 10.50

7.50 each



1 LITRE
refill size

Ideal for refilling your dish detergent bottle.

❖ **CUCINA FRUITS & PASSION Concentrated Dish Detergent Refill**
1 litre

Lime Zest and Cypress **223-212-4**

Coriander and Olive Tree **223-212-3**

Sea Salt and Amalfi Lemon **223-212-5**

20.00 each



HAND BUTTER

Enriched with **first cold-pressed olive oil** helps to maintain skin's elasticity, softness and hydration.



CUCINA FRUITS & PASSION Nourishing Hand Butter

60 ml
Sanguinelli Orange and Fennel **223-300-0**
Lime Zest and Cypress **222-735-7**
Sea Salt and Amalfi Lemon **223-461-1**
Coriander and Olive Tree **222-742-2**
Pompelmo **224-932-6**

NEW! Peach and Mandarin **226-356-8**
reg. 13.50
10.00
each

NEW!
LIMITED EDITION



HAND SOAP REFILL

Ideal for refilling your hand soap bottle.

CUCINA FRUITS & PASSION Hand Soap Refill

1 litre
NEW! Peach and Mandarin **226-356-6**
Sanguinelli Orange and Fennel **222-745-2**
Lime Zest and Cypress **222-744-6**
Sea Salt and Amalfi Lemon **223-207-5**
Coriander and Olive Tree **223-207-4**
Pompelmo **222-762-7**

reg. 38.00
28.50 each or...



**ANY 2
FOR
55.00**
PAGE 209

To get the 2 FOR price, order in multiples of 2.

NEW! PEACH AND MANDARIN

A blend of freshly blooming peach blossoms with a sweet and zesty hint of mandarin.

Don't miss special offer on refill, page 209



NEW

NEW! LIMITED EDITION
CUCINA FRUITS & PASSION
 Peach and Mandarin

- | | |
|---|--|
| ❖ Concentrated Dish Detergent
500 ml
226-356-7
reg. 10.50
7.50 | ❖ All-Purpose Cleaner
500 ml
226-357-1
reg. 12.00
9.00 |
| Hand Soap Refill*
1 litre
226-356-6
reg. 38.00
28.50
each or... | Nourishing Hand Butter
60 ml
226-356-8
reg. 13.50
10.00 |
- *ANY 2 FOR 55.00**
 (details page 209)

CLEANSSES & SOFTENS

Skin So Soft Beauty Bar Soap

Skin-nourishing bar soap with jojoba oil, cleanses and softens skin. Creamy lather rinses off easily, leaving skin feeling soft and smooth. 90 g

Soft & Sensual 224-348-2

Original 224-348-1

reg. 6.50

4.99 each or...

**SOAPS
3 FOR
9.00**

To get the 3 FOR price,
order in multiples of 3.



WANT MORE AVON? SHOP OUR E-FLYERS AT [AVON.CA](https://www.avon.ca)

Campaign 18, 2023

The advertised prices featured in this brochure (errors and omissions excluded) are Avon's retail prices for this current campaign and are applicable to online or Representative channel purchases only. [Your] Representative[s] set[s] their own selling price depending on the channel of purchase. All prices exclude applicable taxes. All prices and promotions (excluding delivery) featured in this brochure are valid for orders placed during this campaign only.



See our commitment at:
avongivesback.ca



Member of The Canadian
Direct Sellers Association

100% SATISFACTION GUARANTEED

If you are not happy with any purchase,
return the product through
the same channel of purchase.

If you purchased online, return the product
to Avon within 30 calendar days from the date
stated on your receipt for your money back.

**If you purchased from an Avon Independent
Sales Representative**, products must be
returned to your Representative along with
your receipt within 30 calendar days from the
delivery date stated for a replacement,
exchange or your money back.

Certain restrictions apply. Details of the Return
Policy can be found on your receipt or at [avon.ca](https://www.avon.ca).

KINDLY SUBMIT YOUR ORDER BY: _____



@MyAvonCanada

1-800-265-2866
[avon.ca](https://www.avon.ca)

FSC (IND.) 4675581
FSC (10) 4675601