

AVON

CAMPAIGN 2

AVON.CA

7 skin care ingredients experts swear by

FREE

Eye Lift Pro
Dual Eye System
details page 3



HOT WINTER *Sale* IS ON!
Stock up on beauty favourites



believe your eyes!

It visibly helps lift, firm and tighten. All in one!

HOT 
WINTER
Sale 

fact:

In just 7 days,
eye area looks
lifted, firmer
and tighter.



OUR #1 EYE CREAM

**Isa Knox Anew
Clinical Collagen
Booster Eye Lift Pro
Dual Eye System**

With a peptide complex to help boost collagen production. See a dramatic difference in one week. Upper eye gel, 10 ml; lower eye cream, 10 ml

223-261-7
reg. 56.00

32.99 or...

FREE
WITH EVERY
PURCHASE FROM
PAGES 3-13

In case of unforeseen demand, Avon reserves the right to substitute with a product of equal or greater value.

the skin plumper collagen

fact:

Increases the amount of collagen by 65% in just 48 hours.*



fact:

Skin looks instantly smoother, younger, more radiant.

Isa Knox Anew Clinical Collagen Booster Rejuvenating Serum Ampoules

With a powerful peptide blend that boosts the body's natural production of collagen. Capsulated single-use ampoules keep formula fresh and potent, and deliver the optimum dose. Vegan formula. 60 ampoules, 0.22 ml each. **221-391-4** reg. 88.00 **69.99**

Isa Knox Anew Clinical Collagen Booster Microneedling Polisher

An at-home alternative to micro-dermabrasion and microneedling procedures. A highly effective combination of gentle exfoliators polishes away dull skin cells, diminishes the look of fine lines and wrinkles, and improves the appearance of pores. Vegan formula. 50 ml **221-459-9** reg. 48.00 **26.99**

Named from the Greek word "kólla," which means glue, it's skin's strength-building protein. As we age, it breaks down, so sagging and wrinkles appear. But we can stimulate its production with formulas containing peptides, exfoliators and amino acids to visibly firm and smooth skin.



FREE
Eye Lift Pro
Dual Eye System
details page 3

*Based on a collagen production study in cell culture.

natural wrinkle fighter bakuchiol

A gentle plant-based alternative to retinol that helps visibly reduce wrinkles and discolorations without the same irritation. Does not promote skin photosensitivity, so it can be used during the day!

FarmX Bakuchiol Serum
Concentrated lightweight oil-textured formula penetrates the skin's surface to target fine lines, wrinkles and dullness without irritation. See smoother, younger and more radiant-looking skin.
30 ml **222-906-5**
reg. 63.00
49.99



fact:
98%
natural



FREE
Eye Lift Pro
Dual Eye System
details page 3

fact:

In one week, even deep wrinkles start to show improvement.

Isa Knox Anew Clinical Line Eraser with Retinol Targeted Treatment

In just one week, deep lines look smoothed and resurfaced.*
Use PM. 20 ml
223-262-8
reg. 56.00
32.99



fact:

Visibly smooths away overall fine lines and wrinkles.

Isa Knox Anew Clinical Line Eraser with Retinol Treatment

100% of women showed improvement in the look of fine lines and wrinkles.*
Use AM/PM.
30 g
223-262-3
reg. 63.00
38.99

*Based on a clinical study.

the wrinkle wrangler retinol

A derivative of vitamin A, it speeds up surface cell regeneration so wrinkles are visibly diminished. Our formulas have this **#1 wrinkle-fighting ingredient** recommended by dermatologists.

the way to get even vitamin C

Our Multi-Tone Skin Corrector has a **unique complex with two complementary forms of vitamin C**. Together they target seven types of discoloration: **dark spots, uneven tone, post-acne marks, brown patches, blotchy red patches, freckles and sallowness**.



fact:

Eyes instantly look brighter and fresher

Anew Clinical Absolute Even Dark Circle Corrector
With a hyperpigment inhibitor that lightens the look of dark shadows. 15 g
107-757-6
reg. 56.00
32.99

fact:

In just three days, skin tone appears more even

Anew Clinical Absolute Even Multi-Tone Skin Corrector
9 out of 10 saw a dramatic improvement in skin tone for flawless-looking skin.* 30 g
406-425
reg. 62.00
38.99

*Based on a clinical study.

fact:

Helps to instantly replenish hydration

Isa Knox LXNEW Clinical Booster Moisture Lock

Instant hydration that lasts for 72 hours and protects moisture barrier for a soft, supple complexion. 30 ml
223-425-2
reg. 56.00
32.99

fact:

Our highest concentration of hyaluronic acid

Anew Hydra Fusion 1.5% Hyaluronic Acid Serum

Three molecular sizes of hyaluronic acid penetrate surface layers for bounce-back skin. 30 ml
221-428-0
reg. 62.00
34.99



like a “moisture magnet”
hyaluronic acid visibly plumps skin with 2x more moisture



FREE
Eye Lift Pro Dual Eye System
details page 3

fact:

Visibly plumps lines and wrinkles

Isa Knox Anew Clinical Revitalize & Reveal Advanced Wrinkle Corrector

In just two weeks, wrinkles appear reduced. 50 ml

223-262-0
reg. 56.00
32.99



fact:

In 3 days, dramatically retexturizes skin to reveal the look of youthful radiance

Isa Knox Anew Clinical Revitalize & Reveal Resurfacing Expert Smoothing Fluid

79% as effective as a pro micro-dermabrasion without the same irritation. 30 ml

223-188-4
reg. 62.00
38.99



Isa Knox Anew Clinical Revitalize & Reveal Extra Strength Retexturizing Peel

Results similar to a 35% pro glycolic peel.* 30 fragrance-free pads. 223-188-5

reg. 56.00
32.99

*In 6 out of 8 attributes tested over a 7-week period.



fact:

Minimizes the appearance of sun spots, fine lines and post-acne marks



FREE

Eye Lift Pro Dual Eye System details page 3

the super exfoliator glycolic acid

With the smallest molecules of AHAs to penetrate the outer skin layer, formulas with it help **minimize the look of fine lines, discolouration and dullness** so skin looks smoother, fresher and more radiant.

Belif The True Serum Resurfacing

With PHA (polyhydroxy acid) + AHA (alpha hydroxy acid) 10%, this potent serum helps gently and effectively exfoliate dead surface skin cells to visibly improve skin tone and texture and reveal a fresher, more youthful look. Apply after cleansing and follow with your favourite belif moisturizer.

50 ml **222-486-8**
65.00



fact:

92% of people felt skin texture feels to have improved in 1 week**

fact:

Visibly reduces pores and blemishes in 15 minutes



Isa Knox LXNEW Clinical Booster Pore Perfector

PHA (polyhydroxy acid) helps gently remove dead skin cells to visibly smooth, tighten, firm and brighten. BHA (beta hydroxy acid) helps clear clogged pores that create blackheads and whiteheads. 30 ml

223-425-0
reg. 56.00
32.99

**Based on a consumer-perception study.

the smooth operator niacinamide

Helps visibly improve enlarged pores while controlling excess oil.

fact:

88% of people
felt skin softer
and more elastic
in 1 week**



Belif The True Serum Revitalizing

This powerful serum with niacinamide and our patented IPA work together, with a special blend of herbs to help visibly firm skin and shrink the look of pores for a smoother texture. Apply after cleansing and follow with your favourite belif moisturizer. 50 ml

222-486-6
65.00

**Based on a consumer-perception study.

fact:

Improves elasticity,
skin texture and
radiance, and reduces
the appearance of fine
lines and wrinkles
for a younger,
firmer look.



Isa Knox Anew LX Ultimate Rejuvenating Serum

The luxurious paeonol-infused serum with ceramides helps protect skin's moisture barrier, boosting hydration to keep skin looking firm and smooth.

40 ml 222-443-9
reg. 80.00
64.00



FREE

Eye Lift Pro
Dual Eye System
details page 3



soak your
stress away

BIG
700 ML



AVON
TRANQUIL
MOMENTS



RELAXATION
FOAM BATH
BAIN MOUSSANT
RELAXANT



Soothe your
senses with a
serene blend
of sheer
bergamot,
jasmine, rich
florals and
sandalwood.

Tranquil Moments
Relaxation Foam Bath
Unwind daily with
softly scented
bubbles. 700 ml
232-501
20.00 or...

ONLY
7.99

WITH EVERY
10.00 PURCHASE
FROM THIS BROCHURE
(excluding page 15)



boxing day bundle

head to toe hydration!

1 SOOTHES DRY, SENSITIVE LIPS.
Moisturizing cica-infused oil glides over lips to keep them soft and smooth.

2 FOR FACE: HELPS DEHYDRATED SKIN
Instant, deep and lasting hydration while protecting from environmental stressors.

3 FOR BODY: PROVIDES 24-HOUR MOISTURIZATION
This luxurious body lotion with jojoba oil locks in moisture. Your skin looks and feels softer and becomes more supple.

4 STAY-ALL-DAY MASCARA WATERPROOF
Voluminous, waterproof wear without smudging, flaking or clumping.



BOXING DAY BUNDLE
Includes:

- **Dr. Belmeur Daily Repair Cica Moisturizing Lip Balm**
Dermatologically-tested. 4 g
- **Anew Hydra Fusion Gel Cream**
Skin appears smoother, refreshed and plumped with hydration. 50 g
- **Skin So Soft Original Body Lotion**
Layers on nourishing moisture. 350 ml
- **Love at 1st Lash Waterproof Mascara in Blackest Black**
8.5 ml

896-393-0
ONLY 24.99
WITH EVERY 10.00 PURCHASE FROM THIS BROCHURE (excluding page 17)

STUDIO
1886

NEW

❖ **Lace Trim Tunic**
Pullover tunic with rounded neckline, lace trim on sleeves and handkerchief hem. Viscose/polyester/spandex. Centre back length: 76 cm on medium; 81 cm on 1X. Machine wash, dry flat.

XS (0-2) **224-046-3**
S (4-6) **224-046-4**
M (8-10) **224-046-5**
L (12-14) **224-046-6**
XL (16) **224-046-7**

57.99

1X (18W-20W) **224-046-8**
2X (22W-24W) **224-046-9**
3X (26W-28W) **224-047-0**
62.99

CHILLTIME

The fashion forecast calls for frosted colours, snow-soft textures and winter-fresh silhouettes. Fluffy staples and cool-weather essentials keep things comfy and cozy—just how we like it.

NEW

❖ **Sequin Top**
Polyester/rayon/spandex. Center back length: 60 cm on medium; 65 cm on 1X. Machine wash, dry flat.

XS (0-2) **224-062-1**
S (4-6) **224-062-2**
M (8-10) **224-062-3**
L (12-14) **224-062-4**
XL (16) **224-062-5**

46.99

1X (18W-20W) **224-062-6**
2X (22W-24W) **224-062-7**
3X (26W-28W) **224-062-8**
51.99

COOLING TRENDS

Keep it cool with cozy, casual styles that will wrap you in comfort.



NEW

❖ Cinched Waist Funnel Neck Top

Lavender top with funnel neckline, long sleeves and cinched waist with adjustable toggle pull. Polyester/rayon/spandex. Centre back length: 83 cm on medium; 88 cm on 1X. Machine wash and dry.

XS (0-2) **224-047-1**
 S (4-6) **224-047-2**
 M (8-10) **224-047-3**
 L (12-14) **224-047-4**
 XL (16) **224-047-5**

57.99

1X (18W-20W) **224-047-6**
 2X (22W-24W) **224-047-7**
 3X (26W-28W) **224-047-8**

62.99

NEW

❖ Crew Neck Button Detail Top

Teal top with three-button detail at shoulders. Polyester/rayon/spandex. Center back length: 65 cm on medium; 71 cm on 1X. Machine wash, line dry.

XS (0-2) **224-068-3**
 S (4-6) **224-068-4**
 M (8-10) **224-068-5**
 L (12-14) **224-068-6**
 XL (16) **224-068-7**

46.99

1X (18W-20W) **224-068-8**
 2X (22W-24W) **224-068-9**
 3X (26W-28W) **224-069-0**

51.99

FASHION SIZE CHART

SIZE	BUST	WAIST	HIP
XS 0/2	80 - 83 CM	62 - 65 CM	84 - 86 CM
S 4/6	85 - 89 CM	67 - 71 CM	90 - 94 CM
M 8/10	93 - 97 CM	75 - 79 CM	98 - 102 CM
L 12/14	100 - 104 CM	83 - 86 CM	105 - 109 CM
XL 16	108 - 112 CM	90 - 94 CM	113 - 117 CM
1X 18W/20W	118 - 123 CM	99 - 104 CM	122 - 127 CM
2X 22W/24W	128 - 133 CM	109 - 114 CM	132 - 137 CM
3X 26W/28W	138 - 144 CM	119 - 124 CM	142 - 147 CM

Visit avon.ca/fitguide for additional size and fit information



NEW

❖ Colourblock Cardigan

Tan open-front cardigan with colourblocking on hem and cuffs. Polyester/viscose/spandex. Centre back length: 71 cm on medium; 76 cm on 1X. Machine wash, dry flat.

XS (0-2) **224-053-5**

S (4-6) **224-053-6**

M (8-10) **224-053-7**

L (12-14) **224-053-8**

XL (16) **224-053-9**

57.99

1X (18W-20W) **224-054-0**

2X (22W-24W) **224-054-1**

3X (26W-28W) **224-054-2**

62.99

NEW

❖ Elastic Waist Tapered Pant

Grey full-length pant with tapered leg, elastic waist. Polyester/spandex. Inseam: 71 cm for all sizes. Machine wash, line dry.

XS (0-2) **224-054-3**

S (4-6) **224-054-4**

M (8-10) **224-054-5**

L (12-14) **224-054-6**

XL (16) **224-054-7**

34.99

1X (18W-20W) **224-054-8**

2X (22W-24W) **224-054-9**

3X (26W-28W) **224-055-0**

39.99



Side seam pockets

COOL INDEX

Turn up the chill factor with trendy cardis and classic animal prints for weekend comfort all week long.

NEW

❖ Animal Printed Sleeve Top

Black pullover top with animal print long sleeves, rounded neckline and rib cuffs.

Cotton/polyester/spandex. Centre back length: 66 cm on medium; 71 cm on 1X. Machine wash, dry flat.

XS (0-2) **224-052-7**

S (4-6) **224-052-8**

M (8-10) **224-052-9**

L (12-14) **224-053-0**

XL (16) **224-053-1**

42.99

1X (18W-20W) **224-053-2**

2X (22W-24W) **224-053-3**

3X (26W-28W) **224-053-4**

47.99



POLARWEAR

Bundle up and layer up! Whatever the winter advisory, the thermostat is always set to comfort.

NEW

❖ Faux Fur Channel Coat

Grey faux fur coat with channel detail, long sleeves, standing collar, side seam pockets and zipper closure. Polyester. Centre back length: 81 cm on medium; 86 cm on 1X. Dry clean only.

XS (0-2) **224-049-5**

S (4-6) **224-049-6**

M (8-10) **224-049-7**

L (12-14) **224-049-8**

XL (16) **224-049-9**

99.99

1X (18W-20W) **224-050-0**

2X (22W-24W) **224-050-1**

3X (26W-28W) **224-050-2**

104.99

24 | C2



NEW

❖ Waffle Knit Tunic 2-Pack

Includes light-green and cream waffle knit textured tunics with long sleeves, rounded neckline, slightly rounded hem and contrast stitching detail on seams. Cotton/polyester. Centre back length: 69 cm on medium; 71 cm on 1X. Machine wash, dry flat.

XS (0-2) **224-051-1**

S (4-6) **224-051-2**

M (8-10) **224-051-3**

L (12-14) **224-051-4**

XL (16) **224-051-5**

57.99 the pack of 2

1X (18W-20W) **224-052-1**

2X (22W-24W) **224-052-2**

3X (26W-28W) **224-052-3**

62.99 the pack of 2

NEW

❖ Animal Print Vest

Open front animal printed vest with standing collar and side seam pockets.

Polyester. Centre back length: 71 cm on medium; 76 cm on 1X. Machine wash and dry.

XS (0-2) **224-067-3**

S (4-6) **224-067-4**

M (8-10) **224-067-5**

L (12-14) **224-067-6**

XL (16) **224-067-7**

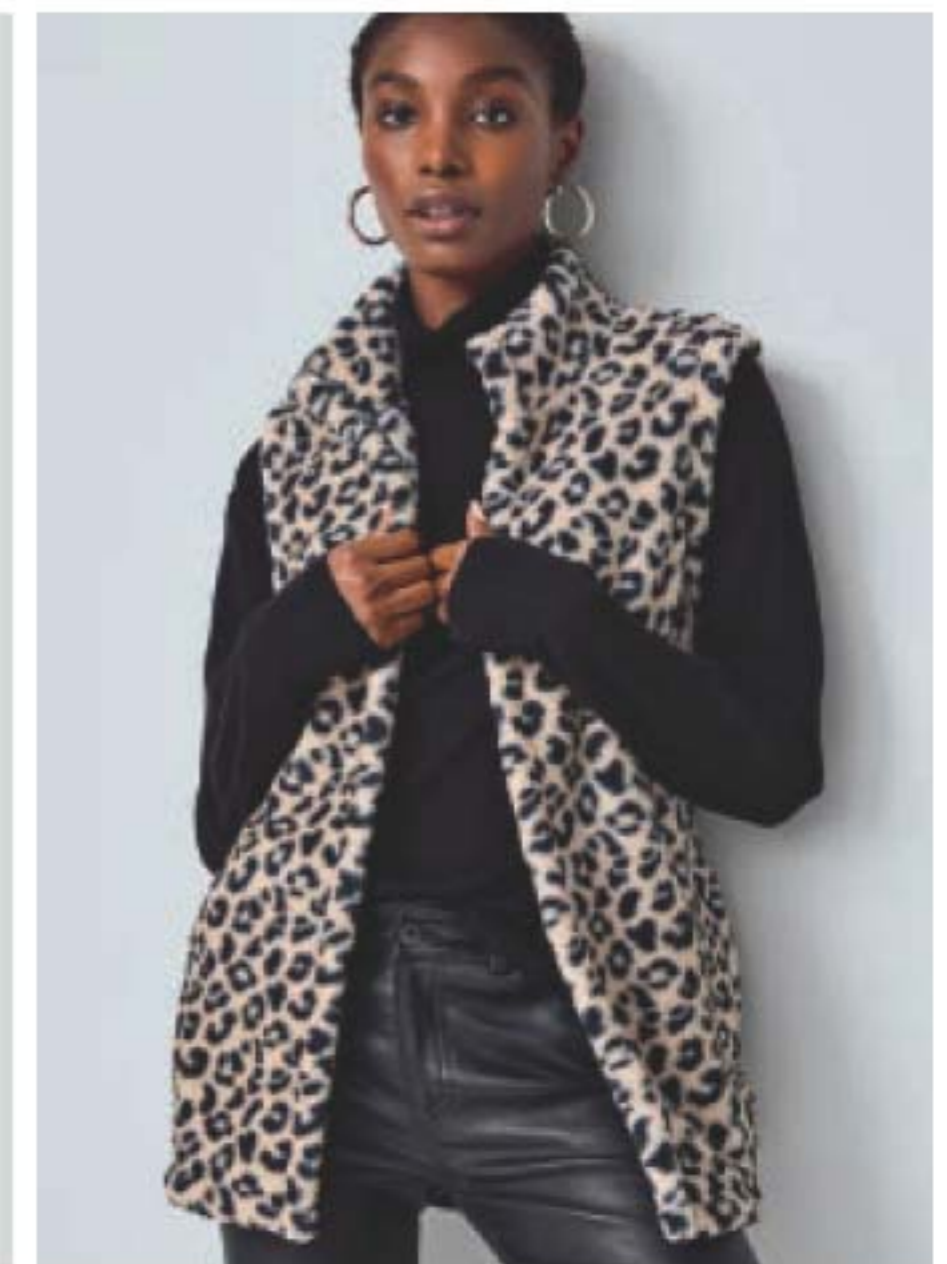
61.99

1X (18W-20W) **224-067-8**

2X (22W-24W) **224-067-9**

3X (26W-28W) **224-068-0**

66.99





NEW
A. ❖ Rib Knit Cuff Sneakers*
 Grey sneaker with rib-knit cuff detail. Man-made materials.
 6M 224-064-1
 7M 224-064-2
 8M 224-064-3
 9M 224-064-4
 10M 224-064-5
 11M 224-064-6
55.99

NEW
B. ❖ Sherpa Trim Ankle Bootie*
 Blue lace-up ankle bootie with faux sherpa lining and 2 functional zippers on upper for easy on/off. Man-made materials.
 6M 224-064-7
 7M 224-064-8
 8M 224-064-9
 9M 224-065-0
 10M 224-065-1
 11M 224-065-2
64.99

*Half sizes, order one size up.

WINTER KICKS

Ready for a cold snap? Time to switch up your foot gear for cooler weather.



NEW
❖ Side Zipper Lace-up Sneakers*
 Lace-up sneaker with decorative zipper. Man-made materials.
42.99
 each pair
 Black animal trim
 6M 224-062-9
 7M 224-063-0
 8M 224-063-1
 9M 224-063-2
 10M 224-063-3
 11M 224-063-4

White/purple trim
 6M 224-063-5
 7M 224-063-6
 8M 224-063-7
 9M 224-063-8
 10M 224-063-9
 11M 224-064-0

FREE | Fresh Fiji Mini Shoe Deodorizer 100 ml. with any footwear purchase, pages 26-27.

In case of unforeseen demand, Avon reserves the right to substitute with products of equal or greater value.

NEW

❖ Animal Print Jogger Set

Animal print pullover with cuffs and hoodie with drawstring. Matching jogger style pant with cuffs and side seam pockets. Polyester/spandex. Centre back length for top: 66 cm on medium; 71 cm on 1X. Bottom inseam: 71 cm for all sizes. Machine wash, line dry.

XS (0-2) **224-058-9**

S (4-6) **224-059-0**

M (8-10) **224-059-1**

L (12-14) **224-059-2**

XL (16) **224-059-3**

61.99 2-piece set

1X (18W-20W) **224-059-4**

2X (22W-24W) **224-059-5**

3X (26W-28W) **224-059-6**

66.99 2-piece set

Side seam
pockets

2-PIECE
SET

COMFORT ZONE

A flurry of fashion
necessities that will
carry you through
the season.



PACK
OF 4

NEW

❖ Contrast Pocket 4-Pack of Tees

Includes pink, lavender, light blue and animal print tees with rounded neckline, short sleeves and contrast animal print pocket. Cotton/polyester. Center back length: 66 cm on medium; 71 cm on 1X. Machine wash, dry flat.

XS (0-2) **224-055-1**

S (4-6) **224-055-2**

M (8-10) **224-055-3**

L (12-14) **224-055-4**

XL (16) **224-055-5**

56.99 the pack of 4

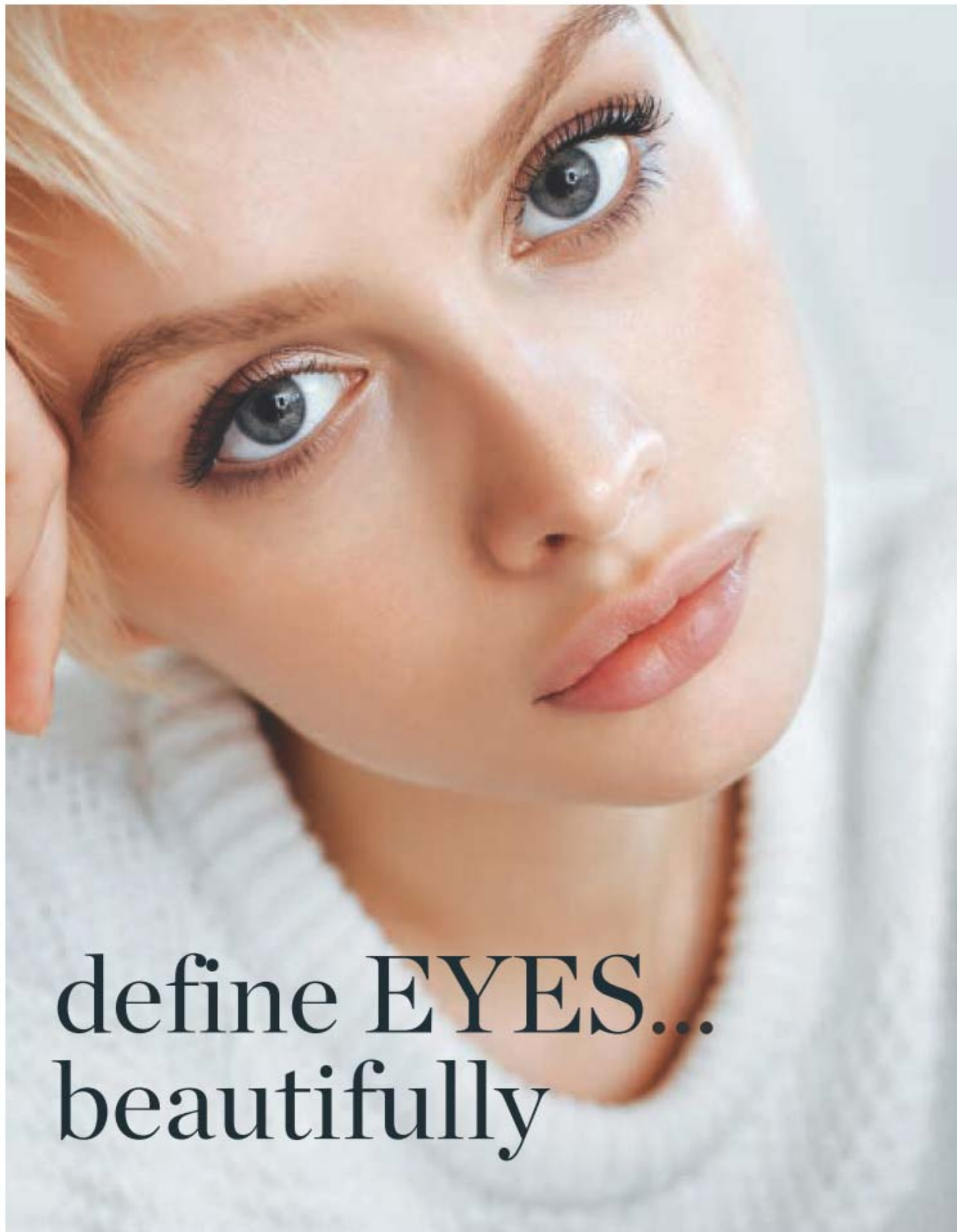
1X (18W-20W) **224-057-1**

2X (22W-24W) **224-057-2**

3X (26W-28W) **224-057-3**

61.99 the pack of 4





define EYES...
beautifully

Get your lashes flutter-fabulous with our 3D waterproof formula and a brush that lifts, curls and separates each lash + a creamy-smooth formula eyeliner



VALUE
\$36

HOT
WINTER
Sale

WOW DEAL DUO

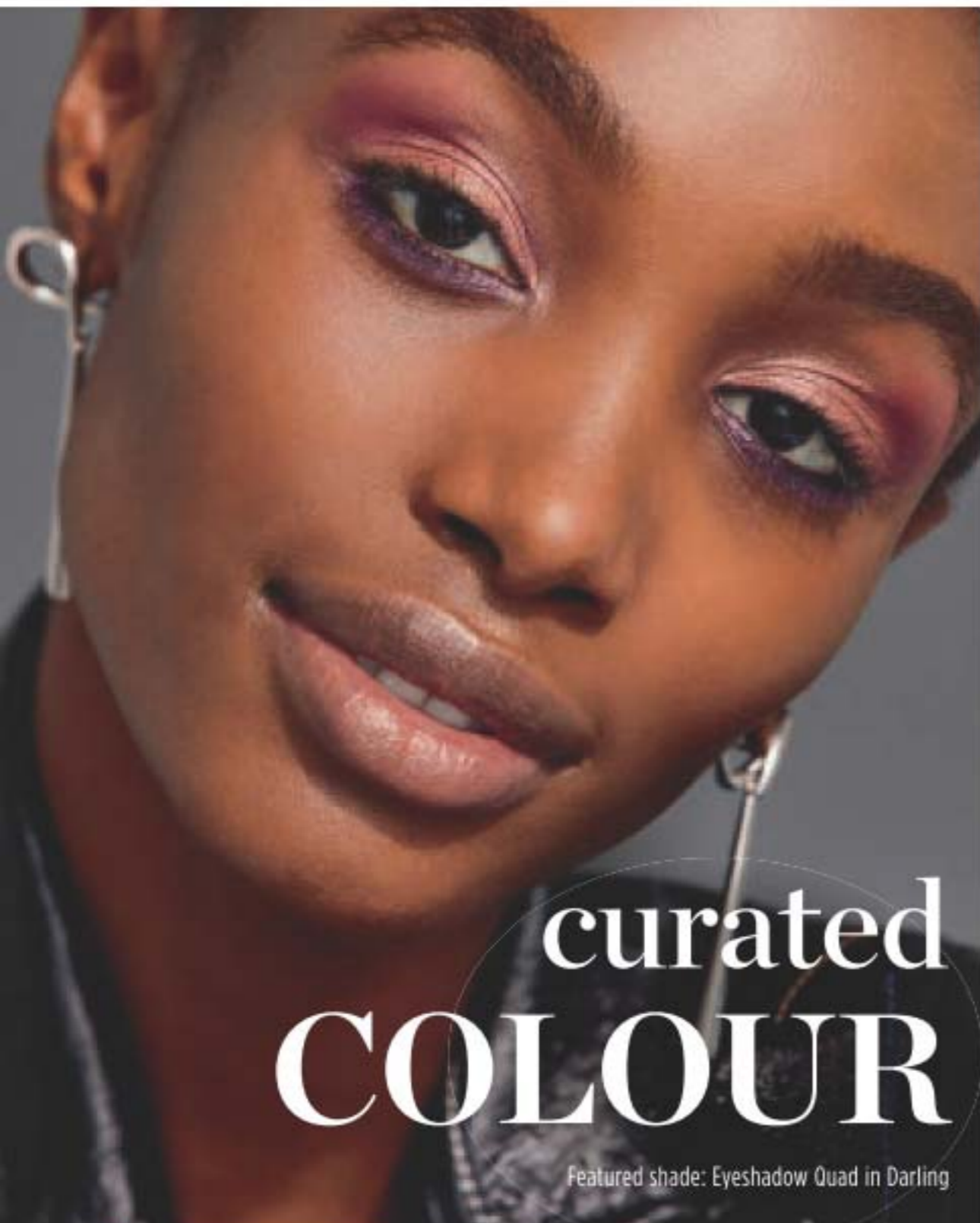
Duo provides a timeless look, perfect for the season. Includes:

- **Love at 1st Lash Waterproof Mascara**
Lash-hugging fibres lock onto lashes for lush, voluminous, waterproof wear without smudging, flaking or clumping. 8.5 ml in Blackest Black.
- **fmg Glimmer Eyeliner**
Glides on effortlessly with all-day comfortable wear. Rich pigments provide vivid, opaque colour laydown. Fade-resistant. 0.28 g in Blackest Black.

896-403-3

ONLY
9.99

WITH EVERY
10.00 PURCHASE
FROM THIS BROCHURE
(excluding pages 30-31)

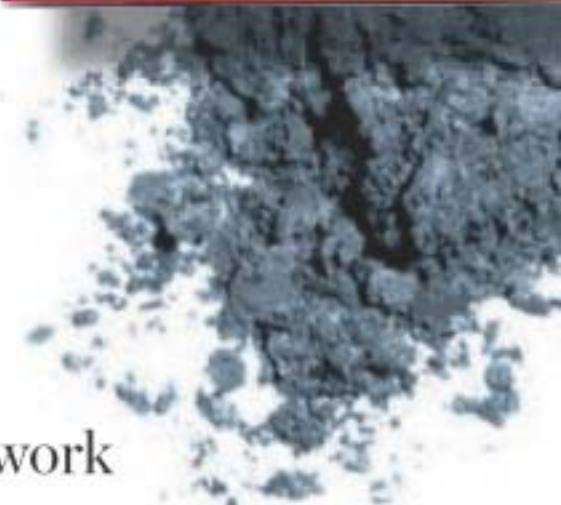


curated COLOUR

Featured shade: Eyeshadow Quad in Darling



Mirrored compact with sponge applicator



Colour coordinated shades work together to enhance eyes for your most expressive looks yet. Perfectly pigmented eyeshadows in matte and shimmer finishes

fmg Glimmer Eyeshadow Quad
Perfectly pigmented shadows in matte and shimmer finishes. Creamy soft powder formula hugs lids with rich colour for all day wear, without the fallout. Buildable, medium to full coverage. 6 g total.
reg. 20.00
16.99

swipe GLIMMER done

fmg Glimmer

Longwear Gel Eyeliner

Richly pigmented formula provides a creamy line of high-performance colour that wears all day and dries to an intense matte finish. Use as an eyeshadow base to amp up overlaying colours. Full, opaque coverage. Smudge/flake-proof. Fade-resistant. 6 g reg. 18.00
14.99



MATTE EYELINER SHADES

fmg Glimmer Longwear Gel Eyeshadow

Long-wearing, creamy weightless formula with delicate pearls that capture and reflect light, so lids look shimmery all day and night. Richly pigmented colour glides on easily and sets for a vibrant finish. Seamless, buildable coverage, never looks heavy or cakey. Crease/smudge-proof. Fade-resistant. 6 g reg. 18.00
14.99

GLIMMER EYESHADOW SHADES

EYELINER DIAMOND:

Finely milled pearl provides dimension and subtle sparkle that makes eyes dazzle!

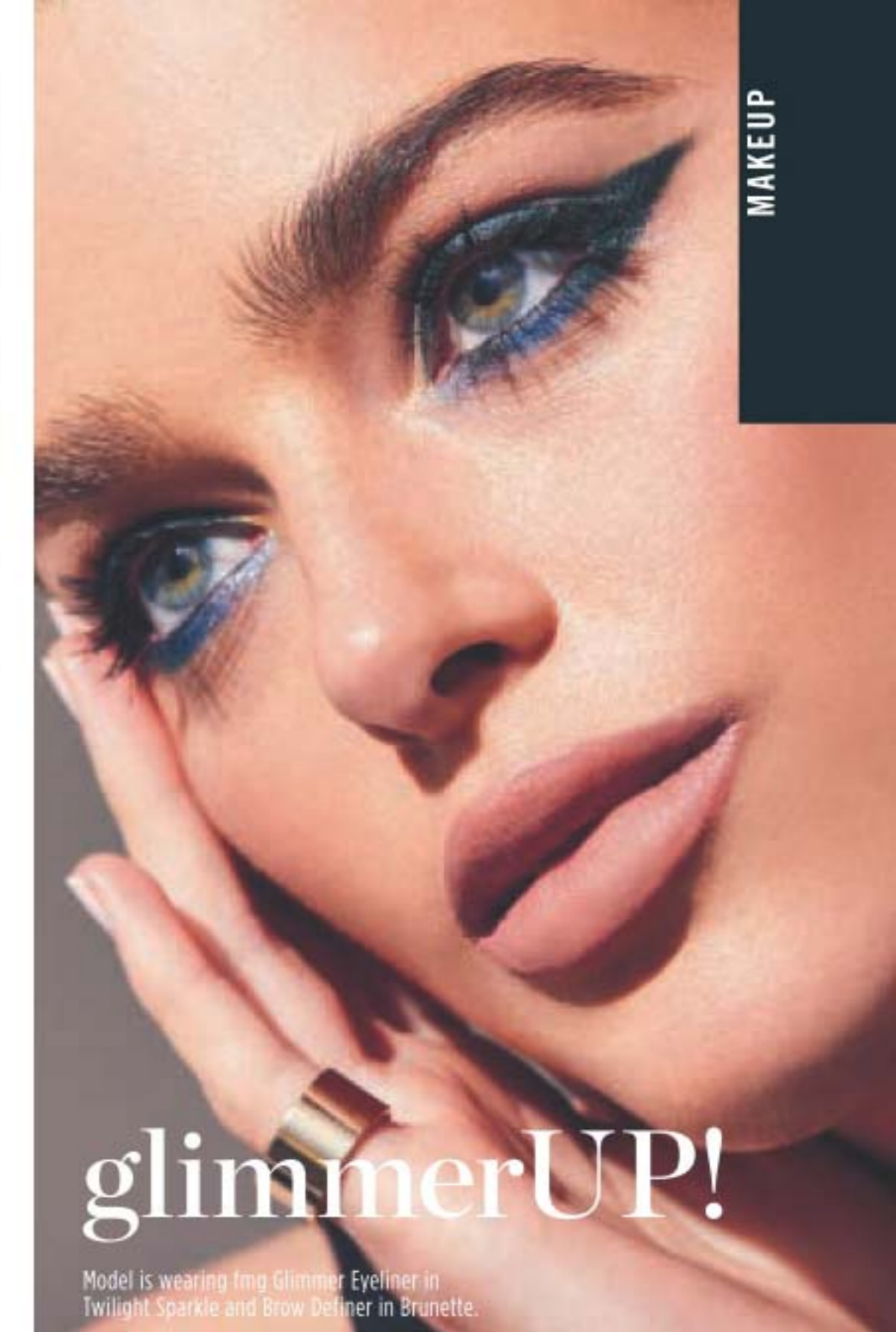
DIAMOND Olive 223-258-2	DIAMOND Sterling 223-258-3	DIAMOND Black Ice 223-258-0
DIAMOND Brown Sugar 223-257-8	DIAMOND Sugar Plum 223-258-1	DIAMOND Purple Rain 223-258-4
DIAMOND Twilight Sparkle 223-257-7	DIAMOND Teal Sparkle 223-257-9	DIAMOND Smoky Diamond 223-257-6

CREAM: Dimensional shades with a subtle sheen finish.

CREAM Cosmic Brown 223-258-9	CREAM Majestic Plum 223-258-5	CREAM Starry Night 223-258-8
CREAM Emerald 223-258-7	CREAM Saturn Grey 223-258-6	

BROW DEFINER

Tawny 223-412-8	Light Blonde 223-412-6	Blonde 223-412-7
Light Brown 223-413-0	Dark Brown 223-412-9	Brunette 223-413-1



glimmerUP!

Model is wearing fmg Glimmer Eyeliner in Twilight Sparkle and Brow Definer in Brunette.

fmg Glimmer Eyeliner
Define eyes perfectly. Creamy-smooth formulas glide on effortlessly. Rich pigments provide vivid, opaque colour laydown. Fade-resistant. Comes off easily with soap and water or makeup remover (waterproof).
reg. 13.00
5.49

fmg Glimmer Brow Definer
Create fine hair-like strokes, for the most natural looking brow. Infused with nourishing castor oil, aiding in hair growth and with coconut oil, leaving brows feeling soft and smooth. Smudge/transfer/sweat/waterproof. 0.28 g
reg. 13.00
5.99

MAKEUP

- | | |
|---|---|
|  |  |
| SHIMMER
Pink Topaz
221-851-3 | MATTE SATEEN
Citrine
222-434-6 |
|  |  |
| MATTE SATEEN
Pink Sapphire
222-434-5 | MATTE SATEEN
Jasper
222-434-7 |
|  |  |
| MATTE SATEEN
Sunstone
222-434-3 | GLITTER
Peach Sapphire
221-139-4 |
|  |  |
| MATTE SATEEN
Moonstone
222-434-4 | SHIMMER
Rose Gold
221-139-8 |
|  |  |
| GLITTER
Fool's Gold
221-139-6 | MATTE SATEEN
Tiger's Eye
222-434-8 |
|  |  |
| SHIMMER
Bronze Age
221-139-9 | GLITTER
Ultramarine
221-138-9 |
|  |  |
| SHIMMER
Iron Violet
221-139-5 | SHIMMER
Crystal Lilac
221-851-1 |
|  | |
| BEST-SELLING
SHADE!
GLITTER
Diamond Dust
221-850-2 | |



glamstar EYES

Available in 3 ultrafine pearl finishes: Matte Sateen, Glitter or Shimmer

Featured shade: Citrine

fmg Glimmershadow Liquid Eyeshadow
Stay-all-day, no-smudge, no-crease, buildable formula with no messy fallout. Water-resistant. Paraben/phthalate/sulfate-free. 2 ml
reg. 17.00
11.49



- | | |
|---|--------------------------|
|  | Black Brown
111-787-2 |
|  | Black
111-787-1 |

Bonus! Built in sharpener.
Avon True Color Always On Point Eyeliner
0.31 g
reg. 13.00
9.99

BROWS

24 hours of stay-put brows with ultrawear gel that fills and **SHAPES BROWS**



Brown Black 221-448-2 Medium Brown 221-448-1 Soft Brown 221-448-0 Blonde 221-447-9

Amp up the natural colour of your brows and create a fuller look.
Hi-Brow Sculpting Gel
Smudge-proof, flake-proof and water-resistant flexible formula. With oil-controlling clay, conditioning kiwi extract and vitamin E. 3.7 ml
reg. 24.00
18.99



Anew Clinical Unlimited Lashes Lash & Brow Activating Serum*
84% of women agreed lashes look longer and fuller after 8 weeks of use.** Use PM. 3 ml **220-342-0** reg. 84.00 **45.00**



Length and volume.
Love at 1st Lash Mascara
9 ml **Blackest Black** **220-247-9** reg. 23.00 **16.99**



Volumizing.
Avon True Color Super Shock Volumizing Mascara
10 ml **Black** **110-323-2** reg. 16.00 **12.99**



Long and healthy.
Avon True Color Super Extend Nourishing Mascara
With argan and coconut oil. 7 ml **Black** **113-543-7** **Brown Black** **113-543-8** reg. 16.00 **12.99**



TIP

After curling, apply 1-2 coats of your favourite Avon mascara for a beautifully separated bright-eyed effect.



Comes with two replacement pads

flutter those **LASHES!**

our pro tool captures and curls each lash for a dramatically lifted and curled effect.



Soft, flexible pad prevents pinching

Hot Pink Eyelash Curler
14 cm L. Stainless steel/ABS. **223-260-4**
10.00 or...

ONLY 4.49

WITH ANY PURCHASE FROM PAGE 38

limited quantities

*Anew Clinical Unlimited Lashes is not intended to reverse or reduce hair loss or grow hair. **Based on an 8-week consumer-perception study.



After Dark

Intense decadent black shades with dazzling jewel undertones for dramatic results.

fmg Cashmere 24 Hour Cream Eyeliner

Comfortable kohl formula with 24-hour wear. Waterproof, matte finish. Smudge applicator to blend. Vegan. Paraben/pthalate/fragrance-free.

1.31 g

reg. 26.00

22.00



After Dark 223-066-5
Midnight 223-066-4
Nightfall 223-066-3
Pitch Black 223-066-2



Pitch Black



Nightfall

Expertly curated 9-shade palettes to create an array of looks.

fmg Cashmere Eyeshadow Palette

Long-wearing creamy powder shadows in satin, matte and sparkling finishes. Crease-and smudge-proof wear. Vegan. Talc/paraben/fragrance-free.

18 g total.

reg. 58.00

48.00



Essential Eyes 223-066-0

Mirrored compact for on-the-go touch-ups

Enchanted Eyes 223-066-1

BROW pomade

Create bold, well-defined brows with 24 hours of waterproof wear



Black Brown 223-064-7
Ash Brown 223-064-8
Dark Brown 223-064-6
Brown 223-064-5
Light Brown 223-064-4
Blonde 223-064-3

Includes dual-ended applicator



fmg Cashmere 24 Hour Brow Pomade

Ultra-creamy, weightless pomade fills in brows, as it boosts colour. Smudge-proof, waterproof formula. Matte finish. Includes dual-ended applicator with angled tip brush and spoolie. 4 g

reg. 35.00

28.00



CASHMERE Complexion

Featured shade: N110 Powder Foundation

Cushiony doe-foot applicator for easy, precise application



Package labels may vary.

Cannoli (W) 223-323-7	Nougat (W) 223-323-8	Meringue (W) 223-323-9	Shortcake (C) 223-324-0	Buttercream (N) 223-324-1	Marshmallow (N) 223-324-2	Custard (N) 223-324-3	Strudel (C) 223-324-4
Macadamia (W) 223-324-6	Ganache (WO) 223-324-8	Coconut (W) 223-324-5	Cappuccino (N) 223-324-9	Chai (WO) 223-324-7	Vanilla (W) 223-325-4	Toasty (N) 223-325-1	Praline (N) 223-325-3
Tiramisu (W) 223-325-0	Soufflé (N) 223-325-2	Muffin (W) 223-325-5	Gingerbread (C) 223-325-6	Pudding (N) 223-325-7	Amaretto (N) 223-325-8	Latte (W) 223-326-0	Brownie (WO) 223-325-9
						Available in: Cool (C), Neutral (N), Warm (W) and Warm Olive (WO) undertones.	
Hazelnut (W) 223-326-1	Cognac (W) 223-326-2	Pecan (N) 223-326-3	Java (W) 223-326-4	Clove (N) 223-326-5	Truffle (C) 223-326-6		

fmg Cashmere 24 Hour Foundation
Full, flexible coverage with a matte finish. Blurs pores and fine lines for a smoother complexion. With antioxidant botanical extracts. Ideal for all skin types. Vegan. 30 ml
reg. 45.00
35.00



@MyAvonCanada

CASHMERE COMPLEXION with 24 hours of comfortable, breathable wear

N110 (N) 222-137-5	W110 (W) 222-137-6	W120 (W) 222-137-7	C110 (C) 222-137-8	N120 (N) 222-137-9	W130 (W) 222-138-0
W140 (W) 222-138-2	W150 (W) 222-138-1	W160 (W) 222-138-3	N130 (N) 222-138-4	N140 (N) 222-138-5	W170 (W) 222-138-6
				Available in Cool (C), Neutral (N) and Warm (W) undertones.	
N150 (N) 222-138-7	W180 (W) 222-138-8	N160 (N) 222-138-9	C120 (C) 222-139-0		

mirror compact and sponge for seamless touch-ups



Luxuriously soft weightless formula with a long-lasting matte finish.

fmg Cashmere Compact Powder Foundation
Use as foundation or setting powder for buildable medium to full coverage. Amino-acid coated pigments control shine and visibly smooth skin for perfected, all-day wear. With vegan collagen, lavender oil, artichoke and chamomile extracts. 9.5 g
reg. 52.00
42.00

Sugar (W) 223-391-1	Mochi (N) 223-391-2	Cheesecake (C) 223-391-3
Parfait (W) 223-391-4	Macaroon (N) 223-391-5	Tart (WO) 223-391-6
Butterscotch (W) 223-391-7	Waffle (W) 223-391-8	Biscuit (WO) 223-391-9
Tres Leches (N) 223-392-0	Toffee (W) 223-392-1	Cupcake (N) 223-392-2

Corrects dark circles and imperfections.

fmg Cashmere 24 Hour Concealer
Creamy lightweight texture. Soft focus matte finish. With antioxidant botanical extract. Vegan. 6 ml
reg. 31.00
23.00

Available in: Cool (C), Neutral (N), Warm (W) and Warm Olive (WO) undertones.



caress your lips in CASHMERE

Anti-aging lipstick that combines colour and care for a luxurious experience.



Inner core provides anti-aging hydration and protection

fmg Cashmere Essence Lipcream
Melting balm-like texture glides on effortlessly, wrapping lips in luscious shine and comfort. Enriched with a concentrated blend of anti-aging ingredients, including Bio-Retinol complex, ginseng cell extract, antioxidant meadowfoam seed oil and vitamin E. **Opulent high shine finish with buildable medium-full coverage.** 3 g
reg. 32.00
26.00



Featured shade: Luna

fmg GLIMMER SATIN

find your true satin POWER COLOUR

Enticing and inspiring spectrum of **20 versatile and expressive shades** for every mood and attitude.

fmg Glimmer Satin Lipstick
Lightweight, smooth and creamy formula is infused with pomegranate extract to help provide antioxidant benefits. Soft satin finish delivers rich, comfortable colour with buildable medium-full coverage. 3 g
reg. 16.00
12.99



Poppy



birthdays are the balm



Featured shade: Birthday Suit

BEST-SELLING SHADE!
Lovin' Life
222-022-6

PYT
222-022-9

Birthday Suit
222-023-2

Surprise!
222-023-5

Fine Wine
222-024-0

Birthday Post
222-024-3

A nude pout...
perfect for
winter

**Birthday Balm
Lip Crayon**
Moisturizing formula
rich in non-GMO shea
butter for soft supple
lips. Mineral oil/paraben/
phthalates/gluten-free.
2.7 g
reg. 17.00

**LIMITED
TIME
OFFER
10.99**

GLIMMER LIP



Plump your pout instantly.

fmg Glimmer Lip Plumper

Volulip™ plumps pout, softens and moisturizes lips. Dimensional wet shine. Non-sticky creamy formula with hydrating castor seed oil and antioxidant vitamin E. No stinging or burning, just fuller lips! Shiny gloss finish gives hours of wear without feathering. Universally flattering, brilliant shade. Refreshing peppermint scent. 9 ml

Brilliance 223-379-9

reg. 17.00

13.99

BEFORE



AFTER



Glimmerkiss Liquid Lipstick

Drench lips in vivid sparkling colour in a single swipe. Shimmering gem-like finish. Weightless, silky-smooth gel-cream formula. Water-resistant. Long-lasting wear. Paraben/sulfate/phthalate-free. 2 ml

reg. 20.00

13.99



Ruby
221-840-1

Sand Opal
221-839-7



Amethyst
221-840-0

Violet Sapphire
221-839-8



Featured shade: Flash

glammed UP LIPS

Drench lips in dimensional shine and instant moisture.



Shine 223-380-0

Dazzle 223-380-5



Glow 223-380-7

Glisten 223-380-1



Sheen 223-380-6

Gleam 223-380-3



Flash 223-380-2

Sparkle 223-380-4



Flash

Glossy radiance in shimmery colours.

fmg Glimmer Lip Glaze

Smooth, lip-hugging texture gives hours of wear without feathering. Non-sticky creamy formula with antioxidant vitamin E.

Buildable sheer to medium coverage with lustrous glossy finish. 9 ml

reg. 16.00

12.99

LIP COLOUR



fmg Ink High-Gloss Lacquer
Lavish lips in seven naturally-derived nourishing essential oils to help keep lips feeling luxurious, supple and hydrated: sweet almond, borage seed, calendula, chamomile flower, lavender, rose flower and rosemary leaf oil. 5 g
reg. 30.00
24.00



2-in-1 Lip Tattoo Lip Line & Fill Duo
Semi-permanent lip stain with all-day wear. Infused with sunflower seed oil to help hydrate lips. Paraben/gluten/phthalate/sulfate-free. Vegan. 1.6 ml
reg. 19.00
13.99



Avon Crave Lip Gloss
Addictive gourmand scents and ultra shine. Vitamin E formula moisturizes, smooths and softens lips. 9 ml
reg. 13.00
8.49

velvety soft MATTE FINISH

Weightless, non-drying formula that lasts for hours.

Mattitude Soft Matte Liquid Lip
Micronized pigments release vivid colour. Poppy seed oil and vitamin E nourish and smooth lips. Paraben/sulfate/phthalate-free. 4 ml
reg. 19.00
13.99



Featured shade: Driven





work your MAGIX

Choose from **Radiant (R)**, **Oil-Free (OF)** and **Natural (N)** tinted moisturizers with a flexible shade offering that makes matching easy.

Featured shade: Soft Medium

Find your perfect shade at avonmagixmatch.ca



Fair
(R) 223-196-1
(OF) 222-883-9
(N) 222-880-7



Fair Light
(R) 222-941-3
(OF) 222-884-0
(N) 222-880-9



Light
(R) 223-196-2
(OF) 222-884-1
(N) 222-882-2



Light Medium
(R) 223-196-3
(OF) 222-884-6
(N) 222-882-4



Soft Medium
(R) 222-941-4
(OF) 222-884-8
(N) 222-882-5



Medium
(R) 223-196-4
(OF) 222-884-9
(N) 222-882-6



Medium Deep
(R) 223-196-5
(F) 222-885-1
(N) 222-883-3



Tan Deep
(R) 222-941-5
(OF) 222-885-2
(N) 222-883-4



Deep
(R) 223-196-6
(OF) 222-885-3
(N) 222-883-6

BOOSTS RADIANCE

INSTANTLY HYDRATES

CONTROLS SHINE



Tan Deep



Soft Medium



Light Medium

fmg Magix Tint Tinted Moisturizer Radiant (R)
Infused with passionfruit, chia, sunflower seed and antioxidant vitamins E and B5 to soothe and keep skin hydrated. Vegan. **Buildable sheer-to-medium coverage with a radiant finish.** 30 ml

fmg Magix Tint Oil-Free Tinted Moisturizer (OF)
Buildable sheer-to-medium coverage with a demi-matte finish. Helps even skin tone and blur the look of pores. Non-drying and won't settle into fine lines. Lightweight, moisturizing formula ideal for oily skin and combination skin. 30 ml

fmg Magix Tint Tinted Moisturizer Natural (N)
Lightweight moisturizing formula with hyaluronic acid, vitamin E and papaya complex enhances complexion and provides instant hydration and antioxidant benefits. **Sheer veil of colour with a natural demi-matte finish.** 30 ml
reg. 20.00
15.99 each



FREE
Avon Pro Flawless Makeup Blender (\$11 value)
with every purchase from pages 52-53

In case of unforeseen demand, Avon reserves the right to substitute with a product of equal or greater value.

Packaging may vary.

fmg MAGIX perfect for all skin tones and types

invisible multi-tasking SHINE STOPPERS

fmg Magix Blur Oil Control Primer Balm
Velvety, sheer formula with special blurring microspheres creates an ultra-smooth, shine-free canvas. Formulated with **nutmeg extract for antioxidant benefits**. Includes a sponge applicator. Paraben/talc-free. 17 g
Invisible 222-878-9
reg. 28.00
22.99



fmg Magix Dust Finishing Powder - Invisible
Lightweight mineral-infused loose powder creates an invisible veil that diffuses light and visibly blurs pores and fine lines. **Velvety-soft matte finish**. Comes with powder puff applicator. Talc/paraben/fragrance-free. 6.5 g
reg. 24.00
19.99

fmg Magix Dust Finishing Powder
Silky feel with naturally glowing, soft matte finish. Blend of micro-milled rose quartz, ruby and tourmaline plus **antioxidant green tea extract** to enhance and smooth skin. Wear alone or to set makeup. Zero flashback. Talc/oil/paraben-free. 6 g
reg. 24.00
19.99



now you see it, now you DON'T!

Reduces the appearance of dark circles, blemishes and blurs imperfections for a flawless look.



fmg Magix Corrector Brightening Perfector
Lightweight formula infused with **caffeine, soothing marigold and vitamin E** to help perfect skin. Won't settle into fine lines. Flexible shades with buildable sheer-to-medium coverage and a demi-matte finish. Great for on-the-go touch-ups. 3.2 g
reg. 19.00
14.99

FMG COLORS OF LOVE makeup that loves you back!

fmg Colors of LOVE Heart-Warming Bronzer Matte Mineral Powder

Skin-loving mineral powder adds effortless warmth to complexion and helps reduce the appearance of shine. Silky matte formula with moisturizing phytosqualane glides on evenly without appearing cakey. Special-effect pigments hug the skin for a lasting bronzed finish. Get a back from the beach, natural-looking tan all year long. Perfect for all skin types. Vegan. 11.8 g
reg. 35.00
29.00

LOVE the bronze



Featured shade: fmg Colors of Love Heart-Warming Bronzer Matte Mineral Powder in Goldays Days and Glow Beads Illuminating Powder in Wild Hearts.



My Sunshine
222-940-3



Golden Days
222-940-4



Sunset Kiss
222-940-5



LOVE
the glow!

light up the room with a skin-loving glow collection that's truly illuminating!

MAKEUP



Wild Hearts
222-939-8



Queen of Hearts
222-939-7

fmg Colors of LOVE Glow Beads Illuminating Powder

Luminous heart-shaped and round powder beads blend beautifully to create instant radiance. The lightweight formula provides a delicate pearlescent finish on all skin tones. 20 g
reg. 42.00
35.00

FMG COLORS OF LOVE makeup that loves you back!

**fmg Colors of LOVE
Glow Balm Bronzing Stick**

Creates instant radiance and leaves skin with a warm, healthy-looking glow. Lightweight creamy formula with ultrafine pearls blend for a warm, healthy-looking glow. 8 g
reg. 23.00
18.99



**fmg Colors of LOVE
Glow Balm Illuminating Stick**

Lightweight creamy formula with ultrafine pearls blend for a soft, natural, radiant glow. 8 g
reg. 23.00
18.99



Illuminating sticks feature a skin-loving blend of pomegranate extract, mango and shea butter, vitamins E and C, and avocado oil.

**fmg Colors of LOVE
Glow Balm Duo
Illuminating Stick**

Sheer dual-ended illuminating stick with complementary shades that blend and layer beautifully for expert highlighting and definition. Lightweight formula with multi-colour, ultrafine and bold pearls, glides on smoothly for a soft, shimmery finish. 8 g total.

Heartthrob 222-877-8
reg. 30.00
23.99



LOVE a kiss of colour

A. BLUSH



B. HIGHLIGHTER



Kiss Me Cushion

Skin-loving colour, water-based formula with hyaluronic acid instantly boosts hydration. Antioxidant non-GMO water lily and green tea extracts leave skin feeling silky and nourished. Buildable sheer-to-medium coverage. Cushion compact includes sponge applicator and mirror for on-the-go love. **Available in Blush or Highlighter.** Each, 8 g
reg. 38.00
32.00 each



Includes sponge applicator and mirror



Includes sponge applicator and mirror



BRONZER



**fmg Colors of LOVE
Sun-Kissed Cushion
Bronzer**

Silky, water-based formula infused with hyaluronic acid to instantly hydrate, soothe and visibly plump skin, plus rosemary extract for antioxidant benefits. Buildable sheer-to-medium coverage. 23 g
reg. 55.00
45.00

prime & TONE

Pink for pale skin: Revives skin tone and brightens.



Pink Tone Up Primer
Colour-correcting primers instantly hydrate and leave skin prepped and ready for foundation. 30 ml
221-900-3
reg. 35.00

LIMITED TIME OFFER
22.00

Package labels may vary.



Blonde
222-316-9



Light Brown
222-317-0



Brown
222-317-1



Dark Brown
222-317-2



Black Brown
222-317-4



Dark Grey
222-317-3



Tattoo Station Proof Brow Pencil
Softly defines and fills in brows. Powdery, light and silky finish. No clumping or flaking. Waterproof. Applies smoothly. Spoolie on end. 0.5 g
reg. 16.00
13.00

Gently removes even the most stubborn waterproof makeup



Waterproof Lip & Eye Makeup Remover
Dual-layer oil and water remover. Infused with moisturizing oils. Mineral/talc/paraben-free. Shake well to activate. 110 ml
222-381-9
reg. 17.00
14.00



EASY ombré
vivid shades with complementary combinations

HOT WINTER Sale



Purple with Beige
222-466-6



Orange Meets Red
222-466-1



BEST-SELLING SHADE!
Beige Effect
222-466-5

Unique flat tip for precise, smooth application. Blends easily with a shiny gloss finish.

Flat Two-Tone Lipstick
Slim two-tone lipstick creates a gorgeous natural gradient ombré look in a single stroke. Paraben-free. 1.3 g
reg. 23.00

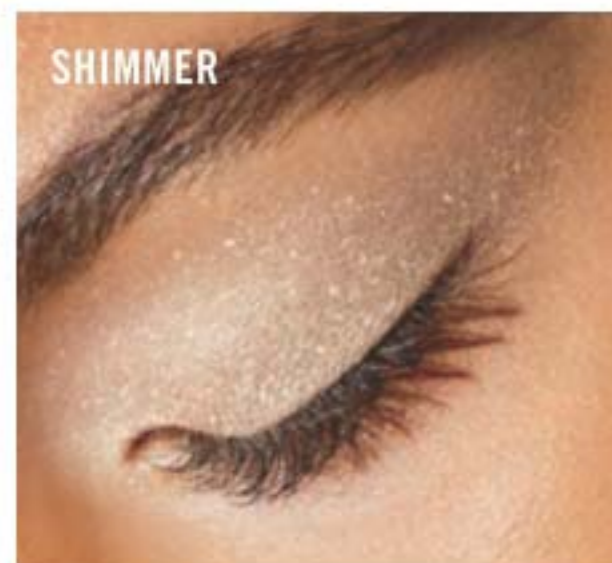
LIMITED TIME OFFER
16.00

eyeshadow PRIMER

Stay fix system extends the wear of eye makeup for an all-day creaseless, smudge-proof vivid look.



SERENITY



SHIMMER



ORIGINAL



Original
222-935-0

Great for your everyday basic makeup routine.

Serenity
222-935-1

Great for matte shadows or to brighten dull eyes.

Shimmer
222-935-2

Great alone or to give your shadow extra oomph.

VDL Expert Color Primer for Eyes

Enhances shadow shades for a more vibrant, brighter result. Infused with skin-caring Tahitian black pearl powder and silk protein. 6.5 g
reg. 35.00
28.00 each



a rosy OUTLOOK

Multi-tasking primer with a trio of tone-up capsules and rosy fine pearls, gorgeously evens skin tone and gives a subtle gloss effect.

HOW IT WORKS

As you apply to cheeks, forehead, nose and chin, the trio of tone-up capsules are crushed and blended with the rosy base, changing from a rosy white to a beautiful rosy beige tone.

Lumilayer Rosy Perfect Primer

For a velvety smooth, healthy-looking and radiant complexion. Instantly moisturizes, blurs pores and corrects skin tone. Locks down and extends the wear of base makeup. Infused with skin caring damask rose water, rose enfleurage oil, and lady's mantle. 30 ml **222-935-3**
reg. 60.00
46.00





PRIME results

Multitasking primers lock down and extend the wear of base makeup.



FOR DREAMERS & GLOW GETTERS

Lumilayer Metal Cushion Primer
With VDL Lumilayer Technology™. Portable cushion primer is great for on-the-go. Infused with skin-brightening vitamin C and niacinamide. Blurs pores, highlights, primes and perfects skin. Includes cushion refill and 2 applicators. Each cushion, 15 g **222-307-0**
reg. 72.00
58.00

VDL

MATTIFY

Blurs pores and fine lines, and staves off shine.



Satin Veil Primer
Infused with prune water to replenish skin with intensified hydration and rose enfleurage oil to improve skin's elasticity and texture over time. 30 ml **222-307-8**
reg. 58.00
46.00

GLOW

Sparkling blend of pearls reflect light to create a warm radiant glow.



VDL Lumilayer Primer Fresh
With VDL Lumilayer Technology™. Over 70% moisturizing essence for continuous all-day hydration and smooth skin. 30 ml **222-306-9**
reg. 58.00
46.00

PRIME & SHINE

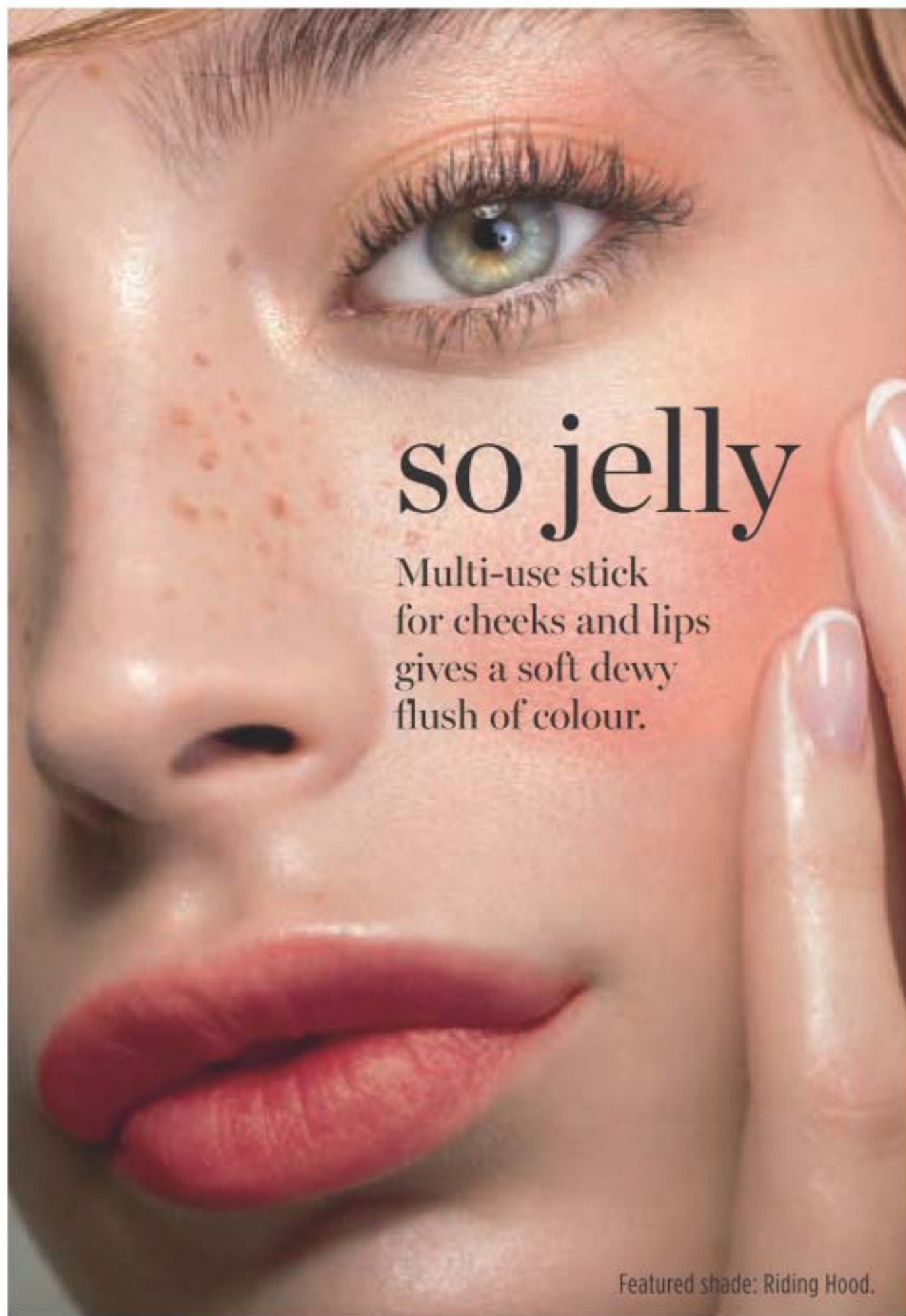
Enhances the wear of foundation for a long-lasting silky texture.



VDL Lumilayer Primer
With VDL Lumilayer Technology™. Visibly brightens, plumps and sculpts the look of skin for added dimension and volume. Can be worn alone, under foundation, or as a sheer highlighter. 30 ml **222-306-8**
reg. 58.00
46.00

VDL Creamy Stick Jelly

Glides on and blends effortlessly. Creamy jelly-soft colour. Buildable, sheer to medium coverage with a glossy finish. Formula infused with antioxidants, botanical extracts and moisturizing shea butter. 7.3 g
 reg. 46.00
37.00



so jelly

Multi-use stick for cheeks and lips gives a soft dewy flush of colour.

Featured shade: Riding Hood.



Riding Hood



Gretel 222-465-4
 Riding Hood 222-465-3
 Floege 222-465-1
BEST-SELLING SHADE!
 Rose Flake (ultrafine pearl) 222-465-2

VDL Expert Color Lip Cube Marble Glow

80% moisturizing oil instantly conditions and adds long-lasting shine. Unique cubic-edge angled design with two-tone marble layers provides precise application. 3.3 g
 reg. 40.00
32.00



Blessing Coral



Blooming Pink 222-314-2
 Blessing Coral 222-314-3
 Mint Favor (Colorless with menthol) 222-314-4

VDL Tint Bar Triple Shot

All-in-one lip primer, balm and tint. Tri-colour design creates a multi-hued layer of shiny, sheer, delicate colour for softer, fuller-looking lips. With moisturizing royal jelly and nourishing ester oil. 3.5 g
 reg. 33.00
26.00



Triple Peach



Triple Red 222-314-5
 Triple Pink 222-314-6
 Triple Peach 222-314-7

lip balm
REIMAGINED

Unique forms and fun designs that create the perfect balance of delicate colour and lip-softening care.



Blessing Coral

Triple Peach

NAIL CARE

Great for use after housework and gardening.

Pink Nail Brush

Works better than soap and water alone to clean dirt under fingernails and on hands. 10 x 5 x 3 cm. Polystyrene/polypropylene.

223-177-5

3.99

limited quantities



NEW

Leopard Print Nail File

Grit paper/EVA. 18 cm L.

224-505-7

reg. 3.00

2.49

limited quantities



DOUBLE-SIDED nail file with leopard print design

high-shine mani

minus the UV light? Go for Gel!

Gel Finish 7-in-1 Nail Enamel

Shine, gel-like finish, protection, vivid colour, strengthener, base and top coat. 12 ml

reg. 14.00

8.99 each

Gel Finish Top Coat

Extend the life of your mani.

12 ml

109-228-7

reg. 14.00

8.99



NAIL CARE

manicure essentials

Clip, snip and file your way to beautifully shaped nails!



Great gift idea

Comes in a pretty pink case



Includes:

- Nail clipper
- Cuticle scissors
- Tweezers
- Nail file
- Cuticle pusher

5-Piece Manicure Kit

Case: 11 x 6 cm (closed), polyurethane/iron. Implements: carbon steel/zinc alloy/stainless steel/plastic. 224-106-8

reg. 17.00

14.99 the kit

limited quantities

BEAUTY ESSENTIALS

Come clean in a swipe
Makeup Remover Wipes with Mineral Complex
 For face and eyes. 24 wipes.
104-396-5
 reg. 16.00
10.49

24 at-home
 or on-the-go
WIPES



Double duty
 colour for lips
 and cheeks.

**Avon True Color
 Be Blushed
 Cheek Color**
 4 g
 reg. 19.00
12.99



Set it and
 forget it
**Avon True Color
 Makeup Setting
 Spray**

Ultra-lightweight,
 fast-drying
 setting spray.
 Infused with
 vitamins A, C
 and E. 60 ml
114-594-4
 reg. 21.00
13.99



Seamless coverage

**Avon Pro Flawless
 Makeup Blender**
 5 x 3 cm. Non-latex
 polyurethane. Perfect
 for liquid or cream
 makeup.
110-389-9
 reg. 11.00
6.49



@MyAvonCanada

the perfect DUO

LARGE:
 25 cm L x
 9 cm W x
 18 cm H.



Contents not included.

MEDIUM:
 19 cm L x 5 cm
 W x 13 cm H.



Clear cosmetic case is generously sized for
 travel or weekend getaways; metallic pink case
 is purse-perfect for on-the-go touch-ups.

Cosmetic Case Duo
 Set of 2. Large: PVC. Medium: PVC/polyester.
 Wipe with a damp cloth. **222-694-4**
 reg. 28.00

**LIMITED
 TIME OFFER**
16.99

limited quantities

**HOT
 WINTER
 Sale**

BEAUTY ESSENTIALS

Soft absorbent pad gently removes eye and face makeup without excess rubbing

Reusable Makeup Remover Pads

Hand wash or machine wash. Use laundry bag when washing in a washing machine. Pads (9 cm diam): 90% viscose from bamboo/10% polyester. Bag (12 x 14 cm): cotton. **223-321-9**

reg. 20.00

17.99

limited quantities



Pack of 7 BAMB00 fibre pads

Infused with activated charcoal

Daily Beauty Tool Charcoal & Konjac Cleansing Puff

Wet puff and apply cleanser to face. Massage skin in small circular motions for a gentle, deep cleanse. Rinse puff after use and hang to dry. Infused with charcoal known to help eliminate impurities. Reusable. 13 cm W x 18 cm L. **223-877-8**

6.99

limited quantities

limited quantities

Includes practical hanging cord



70 eco-friendly blotting papers in a travel-friendly envelope

Daily Beauty Tools Oil Blotting Linens

Portable. 70 sheets. **223-878-0**

5.99

limited quantities



Set of 2 razors

Includes cap

Trim with ease
Daily Beauty Tools Eyebrow Trimmers
ABS/stainless steel. Each, 13 cm L. **223-877-9**
3.99 the set
limited quantities



Cooling Globes - Set of 2

Put in the fridge (not freezer) for at least 20 minutes to chill before use. To speed cooling process, place globes in a bowl of cold water before putting in the fridge. Once cooled, use them to gently massage your entire face and neck. 3 x 12 cm. Glass/water. **224-043-6**

reg. 35.00

32.99 the set

limited quantities



USE COLD

Apply your serum to your face, then using an upward motion, gently roll globes. The upward movement may act as a skin-lifting massage for a younger, tighter, glowing look.

Give your face and neck a cool, invigorating **MASSAGE**

Used as a pair, or individually, these globes easily glide over all the curves of your face and neck for a seamless massage.

NEW

Be transported to the exotic & beyond

Far Away Intense
Eau de Parfum
warm & exotic

A potent blend of freesia, jasmine absolute and enticing amber. The journey begins now. 50 ml

222-619-0
reg. 45.00
34.99



NEW

Escape to a world full of infinite possibilities

Far Away Infinity Intense
Eau de Parfum
fresh & sweet

A potent, luminous blend of radiant bergamot, jasmine sambac and sensual sandalwood takes you wherever you desire.

50 ml 222-619-1
reg. 45.00
34.99

travel to the destination of your DREAMS

Celebrate the nomadic spirit with this potent blend of alluring jasmine, fresh orange blossom and warm tonka bean.

NEW

Far Away Beyond Intense

Eau de Parfum
warm & indulgent
50 ml 222-671-8
reg. 45.00
34.99

Luxury Body Wash
200 ml 222-935-6
reg. 30.00
21.99

Travel Spray
10 ml 222-952-3
reg. 22.00
18.99

Luxury Body Crème
150 ml 222-621-2
reg. 33.00
26.99



RARE COLLECTION

Exquisite in its simplicity

**Rare Pearls Intense
Eau de Parfum**
warm & dreamy

Timeless. Romantic. A potent, luminous blend of shimmering magnolia, white pepper and creamy rosewood takes elegance and romance to new heights.

50 ml **222-619-8**

reg. 45.00

34.99

Packaging may vary.



Show off your
radiance

**Rare Gold Intense
Eau de Parfum**
warm & indulgent

Luxuriate in the radiance. A potent fragrance that envelops you in the warmth of pure gold with opulent notes of mandarin zest, ylang-ylang and golden amber.

50 ml **222-619-9**

reg. 45.00

34.99



Unforgettably CONFIDENT

**Rare Platinum
Intense Luxury
Body Wash**
200 ml **222-950-1**
reg. 30.00
21.99

**Rare Platinum
Intense Luxury
Body Crème**
150 ml **222-626-6**
reg. 33.00
26.99

**Rare Platinum Intense
Eau de Parfum**
warm & dreamy
Your new prized possession. The most coveted ingredients meld in this rich, potent fragrance with notes of iris, warm ambrette and smooth vetiver that immerses you in dreamy luxury. 50 ml
222-671-9
reg. 45.00
34.99



Surrender your senses to a serene garden of pure bliss.

Haiku Kyoto Flower Intense Eau De Parfum
fresh & clean

Delight in an elegant bouquet of violet leaf, white peony and soft cotton musk.

50 ml **222-619-7**
reg. 45.00
34.99



Create a sense of harmony and balanced energy with tranquil clean notes.

Haiku Intense Eau de Parfum
fresh & clean

An airy floral evoking the serenity of a beautiful garden oasis, blooming with Japanese yuzu, delicate muguet and blonde woods. 50 ml

222-619-6
reg. 45.00
34.99

Travel Spray

10 ml **222-952-4**
reg. 22.00
18.99

HAIKU Sacred Intense

Inspired by the alluring contrast of freshness and warmth, discover a divine blend of uplifting tangerine, rose de mai and earthy driftwood, balancing the beauty of nature.



Haiku Sacred Intense Eau De Parfum
fresh & clean

50 ml
222-672-0
reg. 45.00
34.99

Luxury Body Wash

200 ml **222-950-6**
reg. 30.00
21.99

Luxury Body Crème

150 ml **222-621-6**
reg. 33.00
26.99

GINZA STEFANY

The power of their eternal love

A. Always Beside You

Eau de Parfum
warm & exotic

Intoxicating notes of orange leaf, tuberose and earthy musk. 50 ml **222-811-5**
reg. 74.00

62.00

B. In My Arms

Eau de Parfum
fresh & sweet

Sunlit gardenia tree, black currant and delicate peach. **222-792-2**

reg. 58.00

49.00

C. Wish You Were Here

Eau de Parfum
fresh & clean

Fragrant notes of sweet hawthorn berry, ripe pear and sensuous patchouli. 50 ml **222-792-1**

reg. 58.00

49.00



Wish You Were Here Hair & Body Mist

Featherlight microconditioners that won't weigh your hair down. Imparts a subtle, healthy looking shine. 120 ml **223-520-6**

reg. 32.00
25.00



fragrance collection

STUDIO 1886

Be inspired by the past,
embrace the present,
look to the future.

Techtopian
Eau de Parfum
fresh & vibrant
50 ml
222-598-8
reg. 70.00
55.00

XXI
Eau de Parfum
fresh & clean
50 ml
222-599-4
reg. 70.00
55.00

Gilded
Eau de Parfum
fresh & vibrant
50 ml
222-599-3
reg. 70.00
55.00



Gilded
Shower Gel 222-697-2
Body Lotion 222-694-0
Each, 200 ml
reg. 28.00
21.99 each



XXI
Shower Gel 222-697-3
Body Lotion 222-694-1
Each, 200 ml
reg. 28.00
21.99 each



Techtopian
Shower Gel 222-697-4
Body Lotion 222-697-1
Each, 200 ml
reg. 28.00
21.99 each

LYRD layers redefined

The essence of lush, glistening blooms in the early morning light.

LYRD Peony Rosé Eau de Parfum
fresh & clean

A fresh composition of watery florals with sparkling notes of dewy peony petals, pink currant, and sheer musk. 50 ml
223-300-5
reg. 42.00
28.00



A bright floral that lets you shine.

LYRD Honeysuckle Blossom Eau de Parfum
fresh & sweet

Sparkling notes of delicate apple blossom, lively honeysuckle nectar and radiant vanilla orchid. 50 ml
223-300-7
reg. 42.00
28.00



A romantic floral that surprises and delights.

LYRD Bouquet de Freesia Eau de Parfum
fresh & clean

An unexpected mix of sweet freesia, tulip and warm amber. 50 ml
222-611-3
reg. 52.00
42.00



Capture the warmth of the sun.

LYRD Rose du Soleil Eau de Parfum
fresh & vibrant

Radiant notes of sun-ripened raspberry, enchanting rose and spicy patchouli. 50 ml
222-611-6
reg. 52.00
42.00



Caress your tresses with a soft scent

FRAGRANCE

Explore a world of FLORAL DELIGHTS

LYRD Sparkling Neroli Hair & Body Mist

A gentle mist for hair and body! Featherlight microconditioners that won't weigh your hair down. Imparts a subtle, healthy looking shine. 120 ml
223-059-3
reg. 32.00
25.00

LYRD Sparkling Neroli Eau de Parfum
fresh & vibrant

Experience the crisp and vibrant freshness of sparkling neroli, blended with uplifting bergamot and warm musk. 50 ml
222-246-6
reg. 52.00
42.00

LYRD Sparkling Neroli Eau de Parfum Travel Spray

10 ml
223-468-9
reg. 26.00
21.99

LAYERS redefined

Soy blend candles for a cleaner burn

❖ **LYRD Candles**
11 cm diam. x 8 cm H. Glass/paper/soy blend wax.
reg. 35.00
28.00 each



Each 3-wick candle gives 30 hours of burn time!

Never leave burning candles unattended. Keep away from children and pets.

Violet & Birch

Delicate violet, crisp birch and warm vanilla.
222-910-3



Rose Blossom & Musk

Pink peony, sophisticated rose blossom and soft musk.
222-910-2



Juicy Currant & Magnolia

Juicy currant, sweet rhubarb and blooming magnolia.
222-910-1



Peony & Cedar

Fresh eucalyptus, enchanting peony and white cedar.
222-951-3



A world of authentic fragrances expertly crafted by master perfumers with unexpected combinations of the finest ingredients.



LYRD Artisan

unisex fragrances for him or her

FRAGRANCE



Santal Musk Eau de Parfum
warm & exotic
Indian sandalwood mixes with magnetic white musk. 50 ml
222-376-4
reg. 75.00
60.00

Santal Musk Eau de Parfum Travel Spray
10 ml
222-376-7
reg. 30.00
24.00



Cherry Vetiver Eau de Parfum
warm & indulgent
Wild cherry blends with smooth Haitian vetiver. 50 ml
221-958-8
reg. 75.00
60.00

Cherry Vetiver Eau de Parfum Travel Spray
10 ml
221-959-0
reg. 30.00
24.00

WOMEN'S FRAGRANCE

Prima Eau de Parfum
warm & dreamy
 Plum, rose and white patchouli.
 50 ml
122-508-3
 reg. 42.00
28.00



Prima Noir Eau de Parfum
warm & indulgent
 Violet, jasmine and creamy vanilla noir.
 50 ml
119-733-8
 reg. 42.00
28.00

Today Eau de Parfum
fresh & clean
 Joyful notes of hibiscus and silk musk. 50 ml
836-39
 reg. 42.00
32.00



Live Out Loud Eau de Parfum
fresh & vibrant
 A free-spirited expression of sweet wild strawberry, sparkling mimosa and comforting fluffy vanilla.
 50 ml **221-142-5**
 reg. 56.00
35.00



Velvet Eau de Parfum
warm & indulgent
 Luscious Mediterranean fig, pomegranate, sumptuous Bulgarian rose and warm velvet patchouli. 50 ml
220-473-7
 reg. 42.00
30.00



AVON CLASSICS always beautiful

Free O₂ Eau de Toilette
fresh & clean
 Refreshing white peach tea, airy honeysuckle and musk. 50 ml
222-618-9
 reg. 26.00
15.99



Timeless Cologne
warm & exotic
 Bergamot, jasmine and patchouli. 50 ml
110-373-1
 reg. 26.00
15.99



Odyssey Cologne
warm & dreamy
 Muguet, ylang-ylang and warm oakmoss. 50 ml
110-321-2
 reg. 26.00
15.99



Night Magic Cologne
warm & exotic
 Neroli, jasmine and musk. 50 ml
110-300-9
 reg. 26.00
15.99



BACK BY POPULAR DEMAND

Topaze Cologne
fresh & clean
 Indulge in a sparkling blend of jasmine, rose and sheer musk. 50 ml **223-321-3**
 reg. 26.00
15.99



Sweet Honesty Cologne
warm & dreamy
 Roses, peach and sandalwood. 50 ml
110-437-8
 reg. 26.00
15.99



Candid Cologne
warm & exotic
 Bergamot, tuberose and patchouli. 50 ml
110-321-3
 reg. 26.00
15.99



FRAGRANCE COLLECTIONS show off every facet of your beauty

Far Away Gold
Eau de Parfum
warm & exotic
Rich Mohéli ylang-ylang,
Indian jasmine and
seductive Madagascar
vanilla. 50 ml **223-197-1**
35.00 or...



Far Away
Eau de Parfum
warm & exotic
Warm peach, jasmine,
spiced amber and
spirit-moving woods. 50 ml **223-198-3**
35.00 or...



Far Away Infinity
Eau de Parfum
fresh & sweet
Bright marigold,
Indian jasmine sambac
and vanilla. 50 ml **223-197-4**
35.00 or...



Rare Gold Eau de Parfum
warm & indulgent
Rich orange flowers
sparkle with bergamot
and precious amber. 50 ml **102-456-9**
35.00 or...



Rare Pearls
Eau de Parfum
warm and dreamy
Pearlescent flower
accord, creamy magnolia,
fresh rosewood and
sandalwood. 50 ml **102-457-0**
35.00 or...



Rare Diamonds
Eau de Parfum
warm & dreamy
Sparkling plum,
diamond orchid and
cashmere woods. 50 ml **106-258-0**
35.00 or...



all-time fragrance fave luxury scents.

ANY 2 FOR 38.00 MIX OR MATCH PAGES 88-91
To get the 2 FOR price, please order in multiples of 2.

Haiku Eau de Parfum
fresh & clean
Japanese yuzu,
delicate muguet and
blonde woods. 50 ml **220-269-8**
35.00 or...



Haiku Kyoto Flower
Eau de Parfum
fresh & clean
Violet leaf, white
peony and soft
cotton musk. 50 ml **435-140**
35.00 or...



Haiku Reflection
Eau de Parfum
fresh & clean
Radiant water accord,
acacia blossom and
amber wood. 50 ml **115-861-8**
35.00 or...



Rare Amethyst
Eau de Parfum
warm & indulgent
Passionate plum,
mysterious violet and
sandalwood. 50 ml **102-456-8**
35.00 or...



Imari Seduction
Eau de Toilette
warm & indulgent
Luscious plum, hypnotic
purple orchid, warm
vanilla, amber and musk. 50 ml **220-270-2**
35.00 or...



Imari
Eau de Toilette
warm & exotic
Radiant bergamot,
opulent jasmine
and vanilla orchid. 50 ml **222-370-1**
35.00 or...





MEN'S FRAGRANCES

Blue Escape Eau de Toilette

fresh & clean

Ocean mist, white pepper, tropical driftwood and musk.

75 ml **391-946**

35.00 or...



Exploration Eau de Toilette

fresh & clean

Fresh orange, silver sage and vetiver. 75 ml

122-508-2

35.00 or...



Alpha Eau de Toilette

fresh & aromatic

Charismatic verbena, spiced cardamom and refined cedarwood.

100 ml

104-118-3

35.00 or...



Classic fragrance favourites for him

ANY 2 FOR 38.00

MIX OR MATCH PAGES 88-91

To get the 2 FOR price, please order in multiples of 2.

Mesmerize Black Eau de Toilette

warm & intoxicating

Pepper, addictive nutmeg and tonka bean.

100 ml

108-628-3

35.00 or...



Mesmerize Cologne

warm & intoxicating

Bergamot, spicy cardamom and amber. 100 ml

222-370-2

35.00 or...



Perceive Cologne

fresh & clean

Sparkling citrus, sage and cedarwood.

100 ml **831-73**

35.00 or...



Prime Eau de Toilette

fresh & clean

Lavender, spearmint and cedarwood.

75 ml

114-322-0

35.00 or...



MESMERIZE AND GENTOLOGY

NEW

Mesmerize Platinum Ultimate Eau de Toilette

warm & comforting

Magnetic and intoxicating. Be drawn in by an alluring blend of crisp pear, violet and warm amber. 100 ml

223-057-7

reg. 50.00

39.99

Mesmerize Ultimate Eau de Toilette

warm & intoxicating

Bold and confident. Feel the hypnotic power of the magnetic blend of black pepper, zesty pomelo and sensuous patchouli. 100 ml

222-952-5

reg. 50.00

39.99



Gentology for men herb & aloe

Gentology Herb & Aloe 2-in-1 Hair and Body Wash

Washes away dirt and sweat without over-drying. No parabens or mineral oil. Dermatologist-tested. 300 ml

222-371-8

reg. 23.00

18.99

Gentology Herb & Aloe Total Care Moisturizer

Tones, moisturizes, helps visibly brighten and smooth wrinkles... all in one. Use AM/PM on face, neck and body after cleansing and shaving. No parabens or mineral oil. Dermatologist-tested.

150 ml **222-371-7**

reg. 23.00

18.99

Enhance his grooming routine



Studio 1886 Legendary Eau de Toilette

fresh & aromatic

Vibrant lemon eases into crisp lavender for a fresh faceted opening. Notes of patchouli and salted amber provide complexity and depth, revealing exquisite ingredients for a memorable fragrance experience. 50 ml

222-706-0

reg. 70.00

55.00

Studio 1886 Legendary All-In-One Gel Moisturizer

Lightweight gel moisturizer that softens beard hair and helps to soothe irritated skin after shaving.

150 ml **222-906-0**

reg. 28.00

21.99



Studio 1886 Legendary All-in-One Hair & Body Wash

Richly lathering formula that leaves hair and skin feeling clean and lightly scented. 200 ml

222-847-3

reg. 28.00

21.99



WILD COUNTRY

an untamed SPIRIT

A rugged blend of lavender, coriander seed and sandalwood.

LIMITED EDITION

Wild Country Aftershave Splash
fresh & aromatic
Leaves skin feeling smooth and lightly scented after shaving. 118 ml
222-574-4
reg. 19.00
14.99



Wild Country Hair and Body Wash
150 ml
222-701-6
reg. 12.00
5.99



Wild Country Cologne
fresh & aromatic
88 ml **836-47**
reg 32.00
18.99



BLACK SUEDE

COOL, iconic, classic

A fusion blend of bergamot, soft leather and oak moss.

Black Suede Eau de Toilette
fresh & aromatic
100 ml **222-427-9**
reg. 32.00
18.99



FRAGRANCE



Black Suede Hair & Body Wash
150 ml **222-701-7**
reg. 12.00
5.99

Black Suede Aftershave Conditioner
100 ml **222-701-5**
reg. 12.00
5.99

LUXE UP your shower routine



Shampoo
Beautifully scented rich, nourishing lather cleanses and protects without weighing hair down for ultimate volume. Lightweight formula.
Each, 350 ml
Haiku **223-252-0**
Rare Pearls **223-251-9**
Far Away **222-950-0**
reg. 19.00
15.99 each

DAILY ESSENTIALS keep your scent going strong

CREAMY skin softener

Luxurious, long lasting scents with rich emollients.

Perfumed Skin Softener
150 ml
Sweet Honesty **222-623-0**
Haiku **222-702-2**
Imari **222-701-8**
Far Away **222-702-0**
Timeless **222-623-1**
Odyssey **222-623-4**
Candid **222-623-3**
Night Magic **222-623-2**
reg. 12.00
5.99 each



SCENTED body lotion

Leaves skin soft, smooth and lightly scented.

Body Lotion
200 ml
Far Away **382-962**
Haiku **155-600**
Rare Pearls **102-953-3**
reg. 17.00
8.99 each

Ultimate Age Knockdown!

98%

agreed the product improved the appearance of fine lines, skin dryness, and delivered deep hydration*

NEW

Youth Creator - Age Knockdown Bomb

for fine lines and wrinkles, look of pores, and loss of firmness & elasticity

Antioxidant-rich serum helps reduce the appearance of enlarged pores and boosts elasticity for smoother, younger-looking skin. Rich gel-textured serum is quickly absorbed. With nourishing ceramides, 3 herbal formulations and emollient ingredients. 50 ml

**222-841-9
80.00**

BOTANICAL INGREDIENTS:



CEDROL
Helps boost skin elasticity and firmness



WINTER ASTER
Provides an antioxidant effect



WATER PENNYWORT (aka CICA)
Helps to soothe skin and increase firmness

TO USE:

After cleanser, apply a thin layer evenly on skin and massage outwards and onto the neck until fully absorbed. For best results, use twice daily, morning and evening. Follow with your favourite belif moisturizer.

*Based on those who expressed an opinion in a consumer-perception study.



the true cream aqua bomb aloe

84% of people said tired skin felt soothed and calmed in just 7 days**

For redness, irritation and dryness

A moisturizing gel-cream with aloe vera extract to instantly soothe skin, plus a multi-level blend of hyaluronic acid that penetrates different layers for intense hydration, and vitamin E to visibly smooth texture and even tone. 50 ml **223-213-2
50.00**



moisturizing eye bomb

26 hours of moisture around eye area**

For dryness, loss of elasticity and firmness

This lightweight, refreshing eye cream cools on contact and helps keep eye area firm, resilient and smooth for crease-free makeup application. 25 ml **222-319-0
60.00**



the true cream aqua bomb

70% increase in hydration**

For dryness, dullness and uneven texture

This ultralight, water-based, refreshing gel cream bursts upon application to instantly cool skin and release a flood of weightless moisture. Helps visibly improve skin elasticity. Skin looks healthy, smooth and supple. Suitable for sensitive skin.

Full size, 50 ml
**222-400-9
50.00**

Try-it size, 25 ml
**222-401-2
29.00**



the true cream moisturizing bomb

26 hours of intense hydration**

For dryness, loss of elasticity and firmness

This lightweight yet indulgent cream, with a comforting, cushiony, whipped texture, envelops skin with intense, long-lasting moisture. Skin looks and feels smooth, supple and deeply nourished. Suitable for sensitive skin.

Full size, 50 ml
**222-401-6
50.00**

Try-it size, 25 ml
**222-401-7
29.00**

**Based on a clinical study.

for an extra boost
of hydration

belif aqua bomb mist

pH balancing for
oil-water levels

Ultra-fine, soft, and
lightweight cooling mist
hydrates skin for a radiant,
healthy glow. Travel size with
refill. Use throughout the
day under or over makeup
whenever needed. Each,
60 ml **222-917-1**
45.00 set of 2

SET OF 2
one travel
size spray +
refill



large
75 ml

belif aqua bomb sleeping mask

for dull, dry and fatigued skin

Jelly pudding-like texture

Replenishes with explosive hydration
for smoother, more supple-looking
skin and a healthy glow. Use after or
instead of moisturizer. Rinse off in AM.
75 ml **222-916-5**
45.00

100 | C2



aqua bomb jelly cleanser

97% of women felt it was
gentle while cleansing*

For dryness, dullness and uneven texture

Jelly-to-foam. Explosive hydration like
True Cream Aqua Bomb. Amino acids
and glycerin-based cleansing agents
gently remove makeup without stripping
skin of moisture. 160 ml **222-316-8**
34.00

*Based on a consumer-perception study.

an
enticing
walk
in the
woods



the woods eau de parfum

fresh + sweet

Invigorating floral greens transport you into
the woods, where belif discovered the secrets
of herbal remedies. A burst of lemon zest and
dewy bamboo, intensified with fresh-picked
pear blossom and water lily, is wrapped in the
sophisticated warmth of amber and musk
for a fresh, revived feeling. 50 ml **222-921-0**

reg. 80.00
65.00

C2 | 101

MISSION LUXEREVE

Special fermentation technologies derived from natural ingredients

CREAM

Enriched with luxurious oils and other moisturizing ingredients, this indulgent cream helps skin look smoother, firmer and radiantly healthy, for a more youthful, sculpted appearance. Use after Mission Luxereve Serum. 50 g

222-577-0
reg. 400.00
\$330

SERUM

A deluxe rejuvenating serum formulated to help boost skin elasticity and firmness for the smoothest, most youthful-looking skin ever. Use after cleansing and before moisturizing with Mission Luxereve Cream. 30 ml

222-577-1
reg. 260.00
\$220



SERUM GIFT SET

Deluxe 3-piece collection includes:

- **Luxereve Serum** (full size) 30 ml
- **Luxereve Cream** (half size) 25 g
- **Blue Aventurine Rolling Face Massager** Made from 100% Brazilian blue aventurine. Helps stimulate circulation and promote absorption of serum, and cream to help visibly firm and tighten as it cools skin. 10 x 4 cm

222-909-9
reg. 260.00
\$220 the set



SKIN CARE

LIMITED EDITION FOAMING WASHBOX SET

Includes:

- **Foaming Wash** (full-size) Rich foamy lather effectively removes pore-clogging impurities while leaving feeling clean, moisturized and refreshed. 150 ml
- **Essence** (try-it-size) Preps skin for the regimen with the power of natural fermentation while it deeply hydrates and smooths skin. Follow with Mission Luxereve Serum. 20 ml

222-909-5
reg. 110.00
\$90 the set



ESSENCE SET

Deep hydration to prep skin for the regimen as it enhances the regimen's rejuvenating power and smooths skin. Includes:

- **Full-size Essence** Use AM/PM after cleansing and before Mission Luxereve Serum and Cream. 110 ml
- **Try-it-size Serum**, 7 ml
- **Try-it-size Cream**, 5 g

222-825-7
reg. 125.00
\$100 the set



EYE CREAM BOX SET

Includes:

- **Eye Cream** Luxurious yet lightweight hypoallergenic cream helps visibly restore firmness and elasticity around the eyes. 15 ml
- **Rose Quartz Eye Massager** Set of natural massagers soothes and cools eye area, and helps relieve fatigue for a refreshed look. Ergonomic design lets you massage both eye areas at once. 3.5 x 3.75 cm

222-909-8
reg. 255.00
\$205
the set





skin-nourishing,
anti-aging skin
and lip care

Featured shade: Red

ISA KNOX ANEW LX ULTIMATE

Rejuvenating Eye Serum

Infused with paeonol and ceramides to help visibly reduce fine lines around the eye area, diminish dark circles and depuff bags. 30 ml
222-444-0
reg. 70.00
56.00



Rejuvenating Day Cream

This multi-purpose paeonol-infused day cream visibly reduces wrinkles and improves elasticity, radiance and skin texture. With nutmeg to help visibly even skin tone, and soothe skin. 50 ml 222-443-7
reg. 70.00
56.00



Rejuvenating Dual Night Cream

Two-step cream infused with paeonol and macadamia oil. Volume Cream (pink) with rice bran extract to help visibly plump skin. Firming Cream (white) with peptides to support production of collagen and elastin. Each, 25 ml
222-443-8
reg. 70.00
56.00



Lip Balm

Luxurious paeonol-infused tinted lip balm provides long-lasting hydration. Wear alone or over lipstick. 3.4 g
Red 223-199-4
Pink 223-199-3
reg. 35.00
29.99 each



With encapsulated violet droplets that help to deliver firming and plumping ingredients

ISA KNOX LXNEW PLATINUM SCULPTING for visibly firmer, more youthful looking skin

With **organic hibiscus** extract, known to **boost collagen and elastin** for visibly firmer, youthfully plumped skin, and enriched with peptides and other rejuvenating ingredients, our innovative formulas help **skin look resculpted and lifted** from every angle.



Sculpting Oil Serum

Hibiscus extract-infused serum, with collagen-boosting peptides and rejuvenating antioxidants, helps visibly smooth wrinkles and tighten facial contours for a firmer, smoother, more lifted look. Hypoallergenic. 40 ml 223-197-7
reg. 80.00
64.00

Sculpting Day Cream

Deeply moisturizing hibiscus extract-infused formula with smoothing ceramide, visibly tightens facial contours and reduces the appearance of wrinkles for a firmer, smoother, more sculpted look. Hypoallergenic. 50 ml 223-197-6
reg. 70.00
56.00

Sculpting Night Cream

Infused with firming hibiscus extract, ceramide, squalene, and shea butter, it visibly tightens facial contours and reduces the appearance of wrinkles for a firmer, smoother, more defined look. Hypoallergenic. 50 ml 223-197-5
reg. 70.00
56.00

Sculpting Eye Cream

Hibiscus extract-infused formula with hydrating panthenol and revitalizing antioxidants leaves the delicate eye area looking firmer, brighter, more defined. 25 ml 223-197-8
reg. 70.00
56.00

ANEW

3X more powerful together than an oil or serum alone.

Ultimate Supreme Dual Elixir

Two innovative formulas...a unique serum and a luxurious blend of precious oils. Use after cleansing. Serum/oil, 20 ml each. **222-400-7**
reg. 84.00
55.00



Open your eyes to a smoother and firmer look with this 2-in-1 treatment.

Ultimate Multi-Performance Eye System

Visibly smooths the look of crow's-feet and de-puffs under eyes. Cream, 15 g; elixir, 2.5 g **122-538-2**
reg. 59.00
33.99



Works while you sleep to revive and recreate the look of youthful skin.

Ultimate Multi-Performance Night Cream

Restores a radiant and youthful appearance. 50 g **122-904-2**
reg. 59.00
33.99



multi correctors

see firmer skin and fewer age spots

Enhance the benefits of your moisturizers with powerful results!

Anew Power Serum
93% of women agree it dramatically improves skin's overall appearance.* Apply AM/PM after cleansing, before moisturizing. 30 ml

Works while you sleep to revive and recreate the look of youthful skin.

Anew Ultimate Multi-Performance Night Cream
Restores a radiant and youthful appearance. 50 g



896-411-3
BOTH FOR
56.99
Value: 122.00

*Based on those who expressed an opinion in a consumer-perception study.

ANEW

95% of women showed a visibly re-contoured neck area*

Platinum Firm and Sculpt Cream for Neck and Chest

Use PM after cleansing.

50 g **116-652-7**

reg. 59.00

33.99



*Based on a clinical study.

Dual-purpose treatment for eyes and lips.

Platinum Eye & Lip Cream

Dual applicator.

15 g **429-062**

reg. 59.00

33.99



Overnight, skin appears smoother.

Platinum Night Cream

Over time, skin appears resculpted. 50 g **106-588-4**

reg. 59.00

33.99



defy gravity

visibly lift and resculpt the look of youthful contours

Enhance the benefits of your moisturizers with powerful results!

Anew Power Serum

93% of women agree it dramatically improves skin's overall appearance.* Apply AM/PM after cleansing, before moisturizing. 30 ml

Overnight, skin appears smoother.

Anew Platinum Night Cream

Over time, skin appears resculpted. 50 g



896-411-4
BOTH FOR
56.99
Value: 122.00

*Based on those who expressed an opinion in a consumer-perception study.

ANEW VITAMIN C

Illuminating Priming Moisturizer

Instantly illuminates and hydrates your complexion for a healthy, radiant look. Wear alone or under makeup.

50 ml
221-940-4
reg. 48.00
26.99



PRIMING MOISTURIZER

Smoothing Lip Scrub

Enriched with antioxidant vitamin C and sugar crystals, this gentle scrub removes dead skin cells.

20 g 222-985-9
reg. 48.00
21.99



LIP SCRUB

Overnight Lip Mask

Enriched with antioxidant vitamin C and nourishing shea butter, this moisturizing mask conditions and treats lips.

20 g 222-985-6
reg. 48.00
21.99



LIP MASK

Warming Peel

Dual exfoliation, with vitamin C flakes and natural seeds, gently buffs skin with a warming sensation when activated with water, opening pores to remove impurities.

100 ml
221-072-6
reg. 38.00
22.99



WARMING PEEL

Brightening Eye Cream

Reduces the appearance of dark circles and leaves under-eye area looking brighter and more even-toned.

15 ml
221-940-3
reg. 48.00
26.99



EYE CREAM

Overnight Radiant Mask

With vitamins C and E, powerful antioxidants that visibly improve skin texture and boost radiance. Leave on overnight.

50 ml
222-985-5
reg. 50.00
29.99



FACE MASK

ANEW VITAMIN C

Antioxidant Lip Treatment

Colourless treatment plumps, nourishes and protects to keep lips looking youthful. Visibly plumps, smooths and conditions lips.

3.8 g
222-256-6
reg. 20.00
11.99



COLOURLESS LIP TREATMENT



SKIN CARE



Massage all over body after shower for a silky finish

After cleansing skin, use alone or after Dry Body Oil to visibly enhance an all-over glow

BODY OIL

BODY SERUM

Dry Body Oil

Nourishing plant-based dry body oil with antioxidant vitamins C and E quickly melts into skin to instantly hydrate and visibly brighten skin. Soothing sunflower seed and jojoba oils help keep skin feeling supple.

Lightweight and non-greasy. 100 ml 222-985-3
reg. 48.00
29.99

Illuminating Body Serum

With antioxidant vitamins C and E to visibly improve skin texture and boost radiance. Soothing sunflower seed oil and panthenol (vitamin B5) help skin retain essential moisture. Light-reflecting pigments leave skin looking luminous all over.

200 ml
222-985-4
reg. 48.00
29.99

ANEW HYDRA FUSION what your skin's been thirsting for

Cleanse...
no water
needed!

**Cleansing
Micellar Water**
Gently lifts dirt,
oil and makeup
while boosting
hydration. No
need to rinse off!
300 ml
220-388-3
reg. 20.00
11.99



Sunscreen filters
provide broad
spectrum
protection.

**Daily Beauty
Defense Broad
Spectrum Sunscreen
Lotion SPF 50**
Smooth over face
after moisturizing,
before applying
makeup and
before sun
exposure.
50 ml **221-070-7**
reg. 48.00
26.99



Visibly plumps
the look of skin.

**Nighttime Facial
Treatment**
Increases
moisture by 3X.
Relaxing rose
scent. 50 g
220-851-5
reg. 48.00
26.99



Instant
eye-opener!
**De-Puffing Eye
Serum**

Eyes appear
refreshed with
hyaluronic
acid, caffeine
and raspberry
antioxidant.
Ceramic tip cools
for an instant
refreshing feeling.
15 ml **220-388-1**
reg. 48.00
26.99



ANEW

SKINVINCIBLE
Fragrance-free for sensitive skin.

Day Lotion Broad Spectrum SPF 50
Powerful SPF and 24-hour moisture.
Use AM. 30 ml **223-650-8**
reg. 56.00
32.99

Deep Recovery Cream
Don't be surprised to see
the look of age damage
lessened in weeks. Use PM.
30 g **108-951-8**
reg. 56.00
32.99



Moisture Booster

**NMF (natural moisturizing
factor)** Supplements skin with
vital elements naturally found
in skin for optimum moisture.

HA (hyaluronic acid)
Like a "moisture magnet,"
it attracts water to help
instantly replenish
hydration.

Ceramides Form a
protective layer that
limits moisture loss.

Moisture Lock
Instant hydration that
lasts for 72 hours
and protects moisture
barrier for a soft,
supple complexion.
30 ml **223-425-2**
reg. 56.00
32.99



Targets cheeks,
chin, jawline
and jowl.

**Infinite Lift
Targeted
Contouring Serum**
Formulated with
Polypeptide Lift
Complex that
helps to firm and
lift facial skin for
a younger, natural
look. 30 ml
442-280
reg. 63.00
38.99



A face lift in a jar!

**ThermaFirm Face
Lifting Cream**
Moisturizes dry
skin as it firms.
30 ml
220-222-5
56.99





SKIN CARE

Mango Seed Advanced Moisturizing Butter

Nutrient-dense butter gives skin a dewy, radiant glow. Suitable for dry skin. Use AM/PM. Non-greasy. Formulated without 6 parabens*.

50 ml
221-939-9
reg. 45.00
36.00



Mango Seed Advanced Radiant Moisturizing Oil

Multi-use facial oil helps to hydrate while creating a protective barrier. Suitable for dry skin. Use AM/PM. Lightweight. Apply 1 to 2 drops, tap lightly to promote absorption. Formulated without 6 parabens*.

40 ml
221-939-8
reg. 45.00
36.00



*6 Parabens (Methyl; Ethyl; Propyl; Isopropyl; Butyl, Isobutylparaben).

FarmX Super Greens Multivitamin Moisture Cream

Locks in essential nourishing moisture. Use daily after cleansing, serums and treatments.

90 ml 222-907-0
reg. 53.00
42.99



FarmX Bakuchiol Eye Cream

Hydrating and revitalizing formula reduces the look of dark circles, fine lines and wrinkles, without irritating the delicate eye area, for a smoother, brighter and firmer look.

30 ml
222-906-3
reg. 53.00
42.99



FarmX Super Greens Cooling Gel

Use as a lightweight moisturizer to help soothe and cool skin, or apply thicker, after serum, as a mask to hydrate overnight as needed.

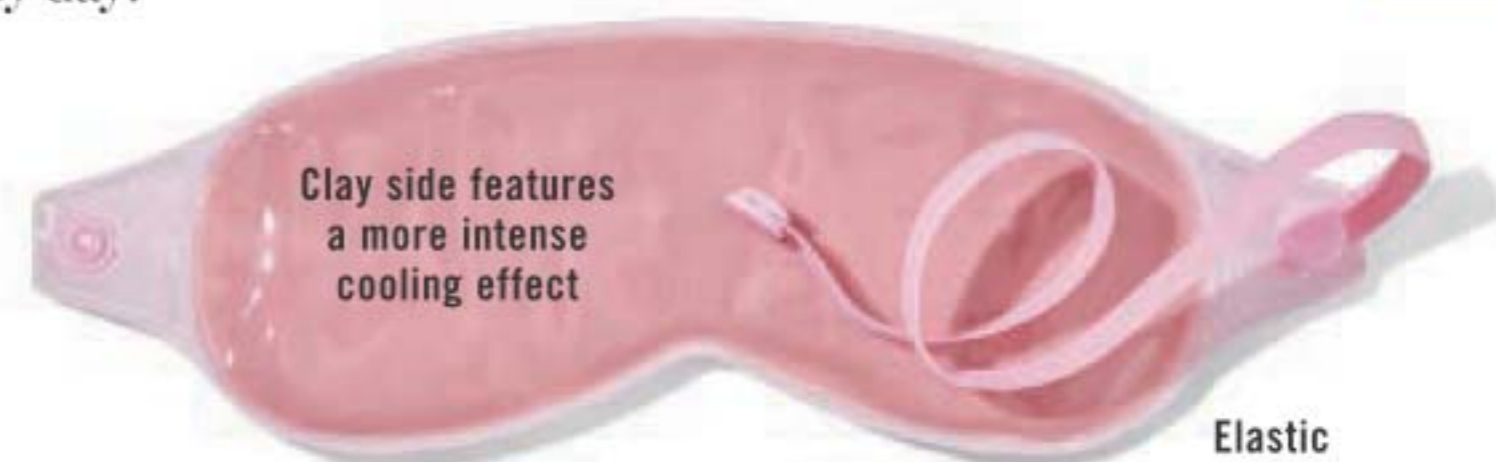
90 ml 222-906-9
reg. 53.00
42.99



SKIN CARE

cool & soothe eye mask

Clay mask delivers cooling comfort for eyes. Helps reduce the look of puffiness and relieve stress. A wonderful way to start or end a busy day!



Clay side features a more intense cooling effect

Elastic band fits comfortably

NEW

Cooling Clay Eye Mask

For cooling comfort, store mask in the refrigerator at least 30 minutes before application. Natural clay/PVC/polyester. Reusable, non-toxic. 18 x 8 cm. Wipe clean. One size fits most.

224-493-3
reg. 18.00
14.99

limited quantities



Plush side provides a mild cooling effect

luxurious mask with natural clay, known to help retain temperatures longer than gel.

Jade Facial Massage Roller

Helps promote circulation and reduces the appearance of wrinkles and puffiness. Place roller in refrigerator for an extra cooling sensation. Jade/iron. 15 cm L x 6 cm W.

220-527-1
reg. 20.00
9.99

limited quantities



Use larger roller for cheeks, chin and forehead

Use smaller roller for eye area

Jade is considered a symbol of serenity, tranquility, and purity.

choose the right cleansers

Cleansing helps **eliminate excess oil, debris and makeup** while refreshing skin. Make sure to thoroughly cleanse skin AM and PM in order to clear away dead skin cells and unclog pores.



Normal, dry, combination and oily skin

Normal, dry and combination skin

Normal to oily skin

Normal, dry and combination skin

2-in-1 Exfoliating Cleansing Balm
Exfoliating cleansing balm enriched with panthenol (vitamin B5) and bamboo stem powder. Use with spatula (included). 100 ml **222-986-3** reg. 42.00 **36.99**

Nourishing Cream Cleanser
Luxurious cream cleanser infused with panthenol (vitamin B5) and soothing rosemary and soapwort extracts. 150 ml **222-986-2** reg. 18.00 **14.99**

Soothing Whipped Oil Cleanser
Gentle whipped oil formula contains panthenol (vitamin B5) and aloe. Mild amino acid-based ingredients derived from coconut. 150 ml **223-124-6** reg. 24.00 **18.99**

Balancing Gel Cleanser
Invigorating gel-to-foam cleanser with moisturizing panthenol (vitamin B5) rebalances the skin. Mild amino acid-based ingredients derived from coconut. 150 ml **222-986-6** reg. 18.00 **14.99**

TOOLS

Pink Headband
This super-soft pink ruffled headband is perfect for keeping hair off your face. Polyester. Hand wash or machine wash in gentle cycle. Hang to dry. **223-208-6** reg. 12.00 **8.99** limited quantities



SKIN CARE



Vibrating cleansing brush cleanses 5X better*

20+ PIECES to help keep your skin clear

Steaming helps clear your complexion

A. ❖ Anew Clean Cleansing Brush
Includes one brush head. Requires 2 AA batteries (not included). 17 cm L x 5 cm W. Plastic with nylon bristles. **223-158-8** reg. 58.00 **39.99**

B. Anew Clean Cleansing Brush Refills
Contains 2 brush heads. Plastic with nylon bristles. Replace heads every 3 months. 5 cm diam. **223-158-9** reg. 24.00 **16.99** set of 2

C. ❖ Pore Cleansing System
Includes 4 suction heads, 12 sponge filters and 6 gelrings. Gently glide over face, using only on T-zone areas (forehead, nose and chin). Requires 2 AA batteries (not included). ABS/polystyrene. **223-539-2** reg. 49.99 **34.99** the set limited quantities

D. ❖ Facial Steamer
Exfoliate, hydrate and moisturize skin with this warm, spa-quality facial steamer. ABS/resin. Electrical. Colour may vary. **223-329-3** **69.99** limited quantities

*Vs. cleansing by hand. Based on a clinical study with an ordinary cleanser.



the ultimate overnight facial

See a dramatic difference in most visible signs of aging, including deep wrinkles and skin radiance!

With **black pearl extract**, known to enhance skin's ability to retain moisture for the ultimate pampering experience.



⊕ **Anew Ultimate Supreme Advanced Performance Crème**
Wake up to visibly softer and smoother skin. Use PM after cleansing. 50 g
112-399-3
84.00 or...

ONLY 29.99

WITH EVERY 15.00 PURCHASE FROM THIS BROCHURE

*Based on a clinical study and consumer-perception studies.

Dr. Belmeur Skin-Sync Rx™

with plant-based, skin-friendly ingredients.

Cica is more than just a trendy beauty ingredient— it's known to relieve irritated skin, strengthen the skin barrier and gently moisturize. In fact, cica was named "tiger grass" after tigers were discovered rolling in it to heal their wounds.



Cica Peptide Ampoule

For skin that needs firming. A concentrated blend of cica and peptides. Dermatologically-tested. Suitable for sensitive skin. Use after cleansing and before moisturizing with Cica Recovery Cream. 45 ml **221-966-1** reg. 65.00 **52.00**

Cica Recovery Cream

For extra-dry and damaged skin. Strengthening ceramide helps restore the moisture barrier. Dermatologically-tested. Suitable for sensitive skin. 50 ml **221-900-9** reg. 60.00 **48.00**

Amino Clear Bubble Foaming Cleanser

Cleanser for oily skin. With amino acid-based ingredients to unclog pores and clean away dead skin cells. Deep-cleansing pump action. Light citrus and herbal scent. Dermatologically-tested. 150 ml **221-965-6** reg. 23.00 **18.00**

Introducing a new on-the-go kit

to keep skin soothed and hydrated wherever you go!

A complete regimen in handy mini sizes!



Eye Cream full size is coming in C5

Includes:

- **Amino Clear Bubble Foaming Cleanser**, 29 ml
- **Advanced Cica Recovery Cream**, 10 ml
- **Advanced Cica Eye Cream**, 8 ml
- **2 Cica Peptide Ampoules**, each, 6 ml

NEW

LIMITED-EDITION Dr. Belmeur Daily Skin Care Kit

Try-it sizes of our best-sellers. **224-106-9** reg. 37.00 **32.00** 5 piece boxed set



beat
the
winter

Beat cold temperatures, low humidity, dry air, etc that draws moisture away from the skin.... with this miracle moisturizer



Jeju Aloe Fresh Ice Soothing Gel
3-in-1 gel with aloe vera extract. Use as a moisturizer, soothing after-sun care or as a facial mask. **Can be refrigerated for a more effective soothing result especially during hot summer days.** Apply to dry, sensitive, areas of face and body. 300 ml **223-093-5** reg. 16.00 **12.99**

Jeju Aloe Fresh Soothing Mist
Instantly soothing and cooling facial mist for face or body, with 90% aloe vera extract. Oil-free and quickly absorbed. After cleansing, spray wherever skin feels dry. 130 ml **222-337-3** reg. 23.00 **18.99**



Jeju Aloe 99% Fresh Soothing Gel
With 99% aloe vera extract and infused with 9 other soothing herb extracts: chamomile, spearmint, lemon balm, rosemary, lavender, bergamot, basil, sage and oregano. Non-sticky absorption, suitable for face and body. 300 ml **222-337-2** reg. 13.00 **9.99**



HOT
WINTER
Sale

3-in-1 benefits
Moisturizing,
Soothing,
Cooling

Jeju Aloe Fresh Ice Soothing Face Mask
Moisturizing gel-cream face mask with Jeju aloe extract. Can be refrigerated for enhanced cooling. Soothes sun irritation. Refreshing and non-sticky. Apply sheet mask after cleansing, leave on for 10 minutes and gently pat remaining cream into face. One single-use mask. **223-093-6** **6.00 or...**

FREE
WITH ANY 2 PURCHASES
FROM PAGES 122-123

In case of unforeseen demand, Avon reserves the right to substitute with a product of equal or greater value.

CLEARSKIN® your ally against acne

Use 2-3 times a week.

Pore Penetrating Black Mineral Mask

It changes colour and cools as it tightens to draw out debris. 75 ml **409-246** reg. 14.00 **8.99**

Instantly strips away pore-clogging dirt and oil.

Professional Liquid Extraction Strip*

Apply on T-zone (nose, forehead, chin) for deep cleansing. Use 1-2 times a week. 30 ml **410-586** reg. 23.00 **12.99**



cleanses & tone
in two easy steps



Professional Deep Pore Cleansing Scrub
125 ml **115-002-9** reg. 14.00 **9.99**

Professional Clarifying Toner Pads*
45 pads. **124-839** reg. 21.00 **12.99**

*Not an acne-treatment product.

SKIN CARE

Banishing Cream Skin Discoloration Improver

Helps reduce the appearance of unwanted dark spots and discolorations. 75 ml **917-47** reg. 14.00 **8.99**



Oil-Balancing Cream

Refreshing gel-cream eliminates excess shine and minimizes the appearance of pores. 50 ml **222-703-3** reg. 19.00 **10.49**



Solutions Tinted Moisture Shield SPF 15

Adds rich moisture to dry skin and gives skin a sheer hint of colour for a sun-kissed glow. 50 ml **224-780-1** reg. 14.00 **8.99**



Anti-Aging Cream

Moisturizing formula works to visibly smooth the appearance of fine lines and wrinkles. 50 ml **222-703-2** reg. 19.00 **10.49**



Nurtura Replenishing Cream

Combats dryness and flakiness by supplying skin with the moisture it needs. 50 ml **115-893-9** reg. 14.00 **8.99**



Rich Moisture Comforting Nourishing Cream

Hypoallergenic. Dermatologist-tested. Non-comedogenic. 150 ml **222-387-4** reg. 10.00

LIMITED TIME OFFER 7.99



Dramatic Firming Cream

With collagen for firmer, smoother-looking skin. 50 ml **916-07** reg. 14.00 **8.99**

Bonus-Size Dramatic Firming Cream
75 ml **222-703-4** reg. 21.00 **11.99**



feel fuller, longer

re:tune Hunger Block

Helps to temporarily support a feeling of fullness. 60 vegetarian capsules.

223-086-6
reg. 42.00
36.00

DIRECTIONS: (Adults): Take 2 capsules with a meal three times daily with at least 240 ml (8 fl. oz.) of water, a few hours before or after taking other medication or natural health products. Avoid taking at bedtime.



hair, skin & nail health

re:tune Hair, Skin & Nail Health

Helps to maintain healthy hair, skin and nails. Source of antioxidants that help reduce cell damage caused by free radicals. 60 tablets.

223-086-3
reg. 55.00
45.00

DIRECTIONS: (Adults): Take 2 tablets daily, with food (containing oil/fat), a few hours before or after taking other medications or natural health products. Avoid taking at bedtime.



thirsting for better hydration?

re:tune Hydration

Great-tasting and refreshing antioxidant drink mix. Helps support immune function and provides a source of electrolytes.

Berry flavoured. 20 packets. **223-086-7**
reg. 37.00

NEW LOWER PRICE
14.99 box of 20 packets

20 PACKETS



DIRECTIONS:

Take 1 packet daily. Add contents of 1 packet to 235 ml (8 fl. oz.) of cold water. Mix well until dissolved. Take with food, a few hours before or after taking medications or natural health products.



gotta have it!

New Skin Resolutions Set

- Anew Ultimate Night Cream Try-it Size, 15 ml
- Isa Knox LXNEW Platinum Night Cream Try-it Size, 15 ml
- Skin So Soft Original Lip Balm in Grape, 4 g
- Veilment Natural Spa Himalayan Pink Salt Exfoliating Soap, 157 g

Comes in resealable bag. **224-072-1**

ONLY 14.99

WITH EVERY 50.00 PURCHASE FROM THIS BROCHURE

(excluding page 127)

40.00 VALUE



Comes in a pouch

In case of unforeseen demand, Avon reserves the right to substitute with products of equal or greater value. Packaging may vary.



SKECHERS

❖ Skechers® Bomber Jacket

Reversible jacket: goes from solid blue to leopard print. Front zip. Ribbed at neck, cuffs and bottom hem. 2 front welt pockets. Chest pocket with diamond auto-lock zipper puller.

Moisture-wicking, wrinkle-resistant fabric with anti-static finishing. Centre back length: 65 cm on M; 70 cm on XXL. Polyester/spandex. Machine wash and dry.

- XS (0-2) **224-492-7**
- S (4-6) **224-492-8**
- M (8-10) **224-492-9**
- L (12-14) **224-493-0**

95.00

- XL (16-18) **224-493-1**
 - XXL (18W-20W) **224-493-2**
- 100.00**

limited quantities

❖ Skechers® GOwalk™ Pants

Full-length black athletic pants with slight flare leg opening.

Double-layer compression waistband with mid-rise.

Innovative GOFLEX® fabric features a comfortable cotton-like feel and matte finish.

Wrinkle-resistant, moisture-wicking and quick drying breathable fabric. Inseam: 81 cm for all sizes. Nylon/spandex. Machine wash and dry.

- XS (0-2) **224-492-0**
- S (4-6) **224-492-1**
- M (8-10) **224-492-2**
- L (12-14) **224-492-3**

65.00

- XL (16-18) **224-492-4**
- XXL (18W-20W) **224-492-5**
- XXXL (22W-24W) **224-492-6**

70.00

limited quantities

Sports Bra not available for purchase.

SKECHWEAVE™
flexible 4-way stretch woven fabric moves with you while keeping its shape

Features 2 side cell phone sized pockets and two back pockets

SKECHERS® SIZE CHART

SIZE	WAIST	HIP	CHEST
XS 0/2	64-67 CM	88-91 CM	83-85 CM
S 4/6	70-72 CM	93-97 CM	88-90 CM
M 8/10	74-77 CM	98-102 CM	93-95 CM
L 12/14	81-85 CM	105-109 CM	99-103 CM
XL 16-18	90-93 CM	114-117 CM	107-110 CM
XXL 18W/20W	99-102 CM	123-126 CM	114-119 CM
XXXL 22W/24W	108-110 CM	132-135 CM	123-128 CM

YOUR YOGA MUST-HAVE

Keeping you steady on slippery surfaces.

Non-slip grips for enhanced stability

Exposed half toes to feel the floor

NEW

❖ Yoga Grip Socks

Toeless yoga socks provide better balance and tactile feel with non-slip grips. Fits shoe sizes 6-10. Cotton/polyester/rubber/spandex. Machine wash and dry. **224-365-7**

11.99 a pair
limited quantities

Retain barefoot sensation



Pull-on style with comfort wide waistband

Contrasting denim trim with silver-tone studs down the tapered side

❖ **Pull On Comfort Blue Jean with Contrast Rivet Inset**

Classic 5-pocket design. Inseam: 71 cm for all sizes. Cotton/polyester/spandex. Machine wash, line dry.

- | | | |
|----|-----------|--------------|
| 6 | 224-493-6 | |
| 8 | 224-493-7 | |
| 10 | 224-493-8 | 18 224-494-2 |
| 12 | 224-493-9 | 20 224-494-3 |
| 14 | 224-494-0 | 22 224-494-4 |
| 16 | 224-494-1 | 85.00 |

80.00

limited quantities

130 | C2



Partial zip closure at back and high low hem

❖ **Mock Neck Sweater with Zip-Back Design and Sleeve Button Details**

Ivory coloured sweater with mock neck. Centre back length: 69 cm on M; 71 cm on 1X. Viscose/polyester/nylon. Hand wash, line dry.

- | | | |
|-----------|--------------|------------------------|
| S (4-6) | 224-496-1 | |
| M (8-10) | 224-496-2 | 1X (18W-20W) 224-496-5 |
| L (12-14) | 224-496-3 | 2X (22W-24W) 224-496-6 |
| XL (16) | 224-496-4 | 3X (26W-28W) 224-496-7 |
| | 99.00 | 105.00 |

limited quantities

EVERYDAY COMFORT

In ash, denim, sage and cameo pink.



4-PAIR PACK

NEW

❖ **4-Pair Pack Cushioned Socks**

Fits shoe sizes 6-10. Polyester/rubber/spandex. Machine wash and dry.

224-365-6

16.99

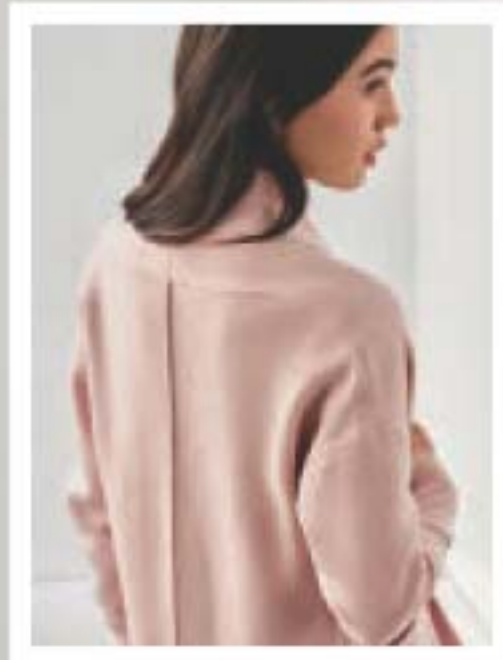
each 4-pair pack
limited quantities



Provide arch support and cushioning

YOU'VE GOT STYLE

The perfect cover-up for cold winter days.



Cut seam detailing on centre back

❖ Cardigan with Button Detail

Soft, medium-weight blush coloured buttonless cardigan. Viscose/polyester/nylon. Centre back length: 92 cm on M; 95 cm on 1X. Hand wash, line dry.

S (4-6) **223-958-0**

M (8-10) **223-958-1**

L (12-14) **223-958-2**

XL (16) **223-958-3**

150.00

1X (18W-20W) **223-958-4**

2X (22W-24W) **223-958-5**

3X (26W-28W) **223-958-6**

155.00

limited quantities



Button details on sleeves

2 patch pockets



Pull-on style with comfort wide waistband

Rhinestones with black and metallic braided threading embellish the tapered sides

❖ Pull On Comfort Fit Black Wash Jean Side Detail

Classic 5-pocket design. Inseam: 76 cm for all sizes. Cotton/polyester/spandex. Machine wash, line dry.

6 **224-494-5**

8 **224-494-6** 18 **224-495-1**

10 **224-494-7** 20 **224-495-2**

12 **224-494-8** 22 **224-495-3**

14 **224-494-9** **85.00**

16 **224-495-0**

80.00

limited quantities



Spandex provides the right amount of stretch

Silvertone and glass stone embellishments at ankle

Pull-on ankle length ponte pants

❖ Ponte Pant Bottom Detail

Black. Inseam: 71 cm for all sizes. Rayon/nylon/spandex. Machine wash, dry flat.

S (4-6) **224-495-4**

M (8-10) **224-495-5**

L (12-14) **224-495-6**

XL (16) **224-495-7**

75.00

1X (18W-20W) **224-495-8**

2X (22W-24W) **224-495-9**

3X (26W-28W) **224-496-0**

80.00

limited quantities



Wind resistant

THE FABRIC

Durable, water repellent fabric with 5 layers of hot fused quilting construction gives this puffer added warmth to protect from the harsh elements.



Superior insulation

THE PADDING

Hi-loft insulation provides added softness and durability. Comfort zone through -20 °C.



WATER REPELLENT

Adjustable hood and two-way front zipper



Zippered side pockets



❖ **Verbio Ever Warm Red Puffer**

High-rise front neckline for extra warmth and protection. Box-stitched pattern for even fill distribution. Centre back length: 90 cm on M; 93 cm on 1X. Polyester/nylon. Machine wash, line dry.

S (4-6) **223-528-1**

M (8-10) **223-528-2**

L (12-14) **223-528-3**

XL (16) **223-528-4**

245.00

1X (18W-20W) **223-528-5**

2X (22W-24W) **223-528-6**

3X (26W-28W) **223-528-7**

250.00

limited quantities

CANADIAN PROUD IN BUFFALO PLAID!

Keep legs and feet toasty warm.



Super soft and cozy leg warmers



Features Canada Maple Leaf logo

❖ **Buffalo Plaid Leg Warmers**

Red and black buffalo plaid design. One size fits most. Acrylic. Machine wash and dry.

223-640-3

16.99 a pair

limited quantities

❖ **Double Layer Canada Plaid Socks**

Fits shoe sizes 6-10. Acrylic/polyester/spandex. Machine wash, line dry.

223-640-0

12.99 a pair

limited quantities



Faux sherpa lined neck warmer

❖ **Hot Paws® Faux Fur Lined Neck Warmer**
 Grey. One size fits most. Polyester/acrylic. Machine wash and dry. **223-454-2**
24.99
 limited quantities

❖ **Hot Paws® Faux Sherpa Lined Snowflake Mitts**
 One size fits most. Acrylic/polyester/rubber. Machine wash and dry. **223-454-3**
24.99
 limited quantities



Ultra-soft faux sherpa lining

A. ❖ **Hot Paws® Faux Fur Lined Rip Stop Gloves**
 Black. Polyester/polyurethane. Machine wash and dry. S/M **223-454-8** L/XL **223-455-4**
33.99
 limited quantities



A

Ultra-soft faux sherpa lining



C. ❖ **Hot Paws® Men's Double Layer Hat**
 Black. One size fits most. Acrylic/other fibre. Machine wash and dry. **223-454-7**
18.99
 limited quantities

STYLISH AND WARM



Touch-screen friendly fingertips

❖ **Hot Paws® Fleece Lined Ladies' Faux Fur Trim Gloves**
 Black. Polyester/polyurethane. Machine wash, dry flat. S/M **223-454-5** L/XL **223-455-1**
38.99 each pair
 limited quantities

❖ **Hot Paws® Soft Brushed Cable Hat - Pebble Mix**
 Grey. One size fits most. Acrylic/polyester/spandex/modacrylic. Machine wash, dry flat. **223-454-4**
26.99
 limited quantities



HOT PAWS
 THE #1 BRAND OF WINTER ACCESSORIES IN CANADA!

WINTER ACCESSORIES

B. ❖ **Hot Paws® Men's Knit Gloves with Tech Finger**
 Black. One size fits most. Polyester/acrylic/rubber/metallic thread. Machine wash and dry. **223-454-6**
21.99
 limited quantities



B

Both gloves have touch-screen friendly fingertips



C

Knit hat with subtle stripes

CUTE AND COMFY

SLIPPERS AND SOCKS

wear them with the collar up or down



non-skid rubber sole

faux-fur lining

A

fun paw print design



lightweight and comfortable

B



Snowflake
223-639-7



Puppy
223-639-6

3 DESIGNS TO CHOOSE FROM



soft, cozy thermal socks

C

A. ❖ Sweater Bootie Slippers

Grey knit with faux-fur lining. Polyester/TPR.

S (5-6) 223-488-5

M (7-8) 223-488-6

L (9-10) 223-488-7

XL (11-12) 223-488-8

36.99 a pair
limited quantities

B. ❖ Brushed Cat Paw Print Socks

Grey and black. Fits shoe sizes 6-10. Acrylic/polyester/spandex. Machine wash and dry. 223-640-4

12.99 a pair
limited quantities

C. ❖ Brushed Striped Socks

Grey/pink. Fits shoe sizes 6-10. Acrylic/polyester/spandex. Machine wash and dry. 223-640-5

12.99 a pair
limited quantities



non-skid gripper soles

❖ Novelty Faux Sherpa Slippers

Fits shoe sizes 6-10. Kitty and puppy: Acrylic/polyester. Snowflake: Acrylic/polyester/metallic thread. Machine wash and dry.

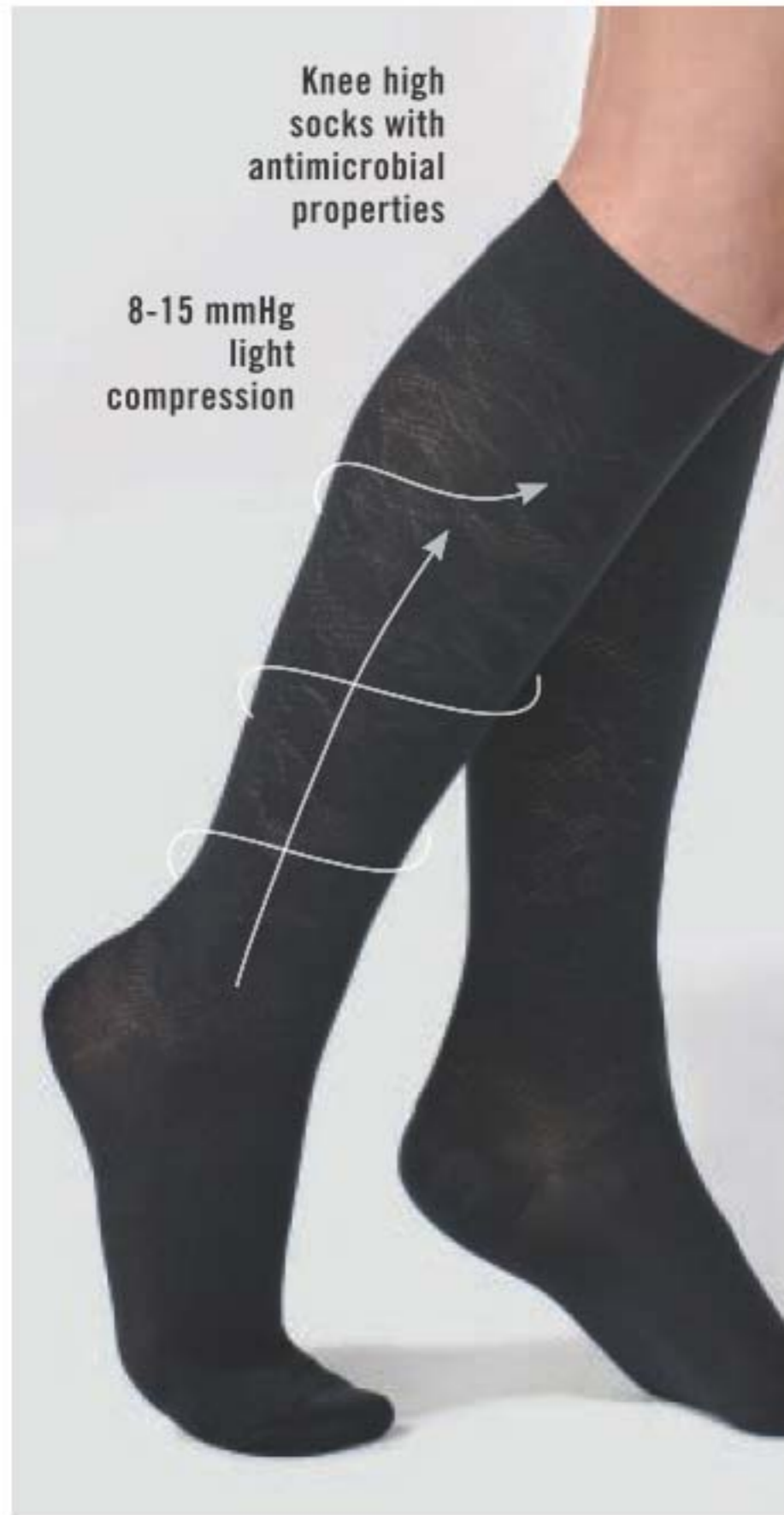
15.99 each pair
limited quantities



Kitty
223-639-5

NON-BINDING COMPRESSION SOCKS

FOR ALL-DAY COMFORT



Knee high socks with antimicrobial properties

8-15 mmHg light compression



Smooth toe and large comfort band

8-15 mmHg light compression

IN GREY OR BLUE

❖ **Tone-on-Tone Compression Socks**
Black. Fits shoe sizes 6-10. Nylon/polyester/spandex. Machine wash, dry flat. **223-638-8**
13.99 a pair
limited quantities



❖ **Cotton Blend Compression Socks**
Fits shoe sizes 6-10. Polyester/cotton/spandex. Machine wash, dry flat. Blue **223-640-1**
Dark Grey **223-640-2**
12.99 each pair
limited quantities



8-15 mmHg light compression

❖ **Floral Design Compression Socks**
Black with floral design. Fits shoe sizes 6-10. Nylon/polyester/spandex. Machine wash and dry. **223-639-9**
13.99 a pair
limited quantities

Knee high antimicrobial, compression socks

TREAT YOUR FEET

to fun and fashionable, (even moisturizing!) sock options

❖ 10-Pack Fashion Ankle Socks

Pack of 10 assorted solid and print ankle socks. Fits shoe sizes 6-10. Polyester/spandex. Machine wash and dry. **223-998-5**

18.99 the pack

10-PAIR
PACK



Purple Stripes
223-998-6

AVAILABLE
IN 2
COLOURS

❖ Thermal Socks

Multi-tone striped socks. Fits shoe sizes 6-10. Polyester/spandex. Machine wash and dry.

13.99 each pair



Grey Stripes
223-998-7



Lined with gel
infused with
jojoba
and rose oil

Not intended for use with footwear.

❖ Cooling Socks with Gel

Purple socks lined with a moisturizing gel infused with jojoba and rose oil to help nourish feet. Non-slip dots on outsole. Fits shoe sizes 6-10. Cotton/polyester/spandex. Hand wash, line dry. **223-998-8**

21.99 a pair

NEW +
EXCLUSIVE



GLOVE
AND
SOCK SET



KEEP HANDS AND FEET FEELING SOFT

❖ Moisturizing Glove & Sock Set

Pink glove and sock set that helps keep hands and feet feeling nourished. Wear after applying lotion or cream to help lock in moisture. Socks fit shoe sizes 6-10. Cotton/elastane. Machine wash, dry flat.

223-999-2

13.99 the set



SWEET STYLE

Accessories so nice,
they're downright
delectable.



Necklace
& earring
set



Ring sizer, page 163

NEW

Dazzling Chocolate Collection
Mixed topaz coloured glass stones in goldtone.

Necklace and Earring Set
Necklace, 42 cm L with 9 cm extender. Lobster closure. Pendant, 4 cm L. Earrings, 1 cm L. Pierced. **223-996-5** reg. 31.99 **23.99** the set

Teardrop Earrings
3 cm L. Pierced. **223-996-8** reg. 17.99 **13.99**

Tennis Bracelet
18 cm L with 3 cm extender. **223-996-9** reg. 23.99 **18.99**

Statement Ring
2 cm L.
Sizes:
6 **223-997-0**
8 **223-997-1**
10 **223-997-2**
reg. 17.99 **13.99**

COMING UP ROSES...

be the most beautiful in the bunch.



NEW

Blushing Rose Collection

Rose coloured stones and crystal stone accents in silvertone.

Necklace and Earring Set

Necklace, 42 cm L with 9 cm extender. Lobster closure. Pendant, 3 cm diam. Earrings, 1 cm diam. Pierced.

223-995-4

reg. 27.99

20.99 the set

Pull-Cord Bracelet

Adjustable. One size fits most.

223-996-1

reg. 23.99

18.99

Layered Ring

2 cm L.

Sizes:

6 **223-996-2**

8 **223-996-3**

10 **223-996-4**

reg. 23.99

18.99

Necklace
& earring
set



Ring sizer, page 163



NEW

Radiant Rosegold Collection

Light rose emerald cut glass stones and clear pave accent in rose goldtone.

Cocktail Ring

2 cm L.

Sizes:

6 **223-542-7**

8 **223-542-8**

10 **223-542-9**

reg. 17.99

13.99

Stud Earrings

Pierced.

223-543-6

reg. 17.99

13.99

Pendant Necklace

Necklace, 42 cm L with 9 cm extender and lobster closure. Pendant, 2 cm L.

223-476-2

reg. 23.99

18.99

Tennis Bracelet

20 cm L with 3 cm extender.

223-543-7

reg. 23.99

18.99



DECADENCE LOOKS GOOD ON YOU

Indulge in long layers
and the look of pearls



Ring sizer, page 163



NEW

Cafe Au Lait Collection
Metallic mix of pearlesque brown beads in silvertone.

Double Layer Necklace
Longest layer, 86 cm with 9 cm extender. Lobster closure.
224-097-5
reg. 36.99
28.99

Pearly Hoop Earrings
5 cm L drop. Fish hook.
224-097-6
reg. 23.99
18.99

Pearly Bypass Ring
1 cm L. Sizes:
6 **224-097-9**
8 **224-098-0**
10 **224-098-1**
reg. 17.99
13.99

Pearly Coil Bracelet
One size fits most.
224-097-7
reg. 23.99
18.99



Necklace & earring set

A. Statement Necklace & Earring Set
4-layered necklace, 40 cm L with 9 cm extender. Pierced drop earrings, 3 cm L.
223-971-1
reg. 69.99
55.99 the set

TIME FOR OPULENCE

Rich hues and bold statements to kick off a new year.



B

NEW

Opulent Lavender Collection

Rose goldtone accents with amethyst and grey coloured beads.

B. ❖ Bracelet Watch
Amethyst colour dial with rose goldtone band. 23 cm L with 31 mm diam. case.
223-971-6
reg. 69.99
55.99



C

Set of 3



D

Ring sizer, page 163.

C. Stretch Bracelets
Set of 3 bracelets. One size fits most.
223-971-2
reg. 23.99
18.99 the set

D. Statement Ring
1 cm L.
6 **223-968-4**
8 **223-968-5**
10 **223-968-6**
reg. 17.99
13.99

LIMITED EDITION

NEW

Golden Pearly Collection

Statement pearlesque beads in goldtone.

Statement Necklace

Bib style. 42 cm L with 9 cm extender. Lobster closure.

223-541-7
reg. 54.99
42.99

Hoop Earrings

5 cm diam. Pierced.

223-541-9
reg. 17.99
13.99

Stretch Bracelet Set

Set of 3. One size fits most.

223-552-8
reg. 27.99
20.99 the set

Set of 3 bracelets

ALL THE ALLURE

Special collections for special occasions



Ring sizer, page 163.

NEW

Antiqued Allure Collection

Antique silvertone with the look of marcasite accent stones.

Statement Necklace

42 cm L with 9 cm extender.

223-640-8
reg. 36.99
28.99

Bracelet

One size fits most. Square casting, 2 cm W.

223-641-0
reg. 27.99
20.99

Earrings

3 cm diam. Pierced.

223-640-9
reg. 13.99
10.99

Ring

6 223-641-1
8 223-641-2
10 223-641-3
reg. 17.99
13.99

NEW

Sparkly Pearly Collection

Classic and classy pearlesque and silvertone beads.

Necklace and Earring Set

42 cm L with 9 cm extender. Earrings, 3 cm L. Pierced.

223-535-0
reg. 36.99
28.99 the set

Stretch Bracelet

One size fits most.
223-535-2
reg. 23.99
18.99



THE BIGGER, THE BETTER!

Classic chains in statement silhouettes

Available in goldtone and silvertone



NEW

Chunky Chains Collection Extra large links in silvertone or goldtone

Bracelet

20 cm L. Bar and loop clasp.

Goldtone **223-994-9**
 Silvertone **223-994-8**
 reg. 23.99
18.99 each

Multi-Row Ring

Five rows.

Sizes:

Goldtone	Silvertone
6 223-995-8	6 223-995-5
8 223-995-9	8 223-995-6
10 223-996-0	10 223-995-7
reg. 15.99	
12.99 each	

Huggie Earring Pack

5-pair pack .5 - 1 cm diam. Pierced.

Goldtone **223-995-3**
 Silvertone **223-995-2**
 reg. 27.99
20.99
 each pack

Necklace and Earring Set

Necklace, 51 cm L with 9 cm extender. Lobster closure. Earrings, 3 cm diam. Pierced.

Goldtone **223-994-7**
 Silvertone **223-994-6**
 reg. 54.99
42.99 each set



WHIMSICAL STYLE

Go ahead, show
off your charm.

NEW

Whimsical Collection

Clear and coloured crystal accents and coloured beads.

Pendant Necklace

42 cm L
with 9 cm
extender.
Pendant,
3 cm L.
reg. 23.99
18.99
each



Heart (rose
goldtone/red)
223-971-9

Stones move
inside the
pendant



Cross
(silvertone/blue)
223-972-0



Moon
(goldtone/champagne)
223-972-1

Beaded Stretch Bracelet

One size
fits most.
reg. 17.99
13.99
each



Heart (rose goldtone/red)
223-969-0



Cross (silvertone/blue)
223-969-1



Moon (goldtone/
champagne)
223-969-2

Earring Pack

3-pair pack.
Two pairs of
studs and one
pair of hoops.
Hoops, 3 cm L
drop. Pierced.
reg. 17.99
13.99
each pack



Heart (rose goldtone/red)
223-968-8



Cross (silvertone/blue)
223-968-7



Moon (goldtone/yellow)
223-968-9

Motif Ring

2 cm L.
reg. 13.99
10.99
each



Heart (rose goldtone/red)
6 **223-969-3**
8 **223-969-4**
10 **223-969-5**



Cross (silvertone/blue)
6 **223-969-6**
8 **223-969-7**
10 **223-969-8**



Moon (goldtone/clear)
6 **223-969-9**
8 **223-970-0**
10 **223-970-1**

Ring sizer,
page 163

LIMITED EDITION

9-pair earring set



Celestial Earrings Gift Set

Nine-pair set of earrings. Huggies with drop, approx. 3 cm L; studs, 1-2 cm L. Pierced. **223-538-0** reg. 36.99 **28.99** the set

Novelty Bracelets with Charms

Tri-layered mixed glass beads with metallic accents and dangling charm. One size fits most.

Pink/star **223-538-1**

Grey/moon **223-538-3**

Champagne/sun **223-538-2**

reg. 27.99

20.99 each set

3-bracelet set



Red **223-535-8**



❖ **Reflective Mirror Watch**
Glitter dial with 35 mm diam. case. Silvertone with 23 cm leather-like strap and buckle closure. reg. 62.99 **47.99** each

Green **223-536-0**

Purple **223-535-9**



Blue **223-535-7**



SPARKLE TIME

Dial up the appeal with out-of-this-world embellishments

NEW

Sterling Silver Marcasite and Mother-of-Pearl Collection

Genuine mother-of-pearl inlay with genuine marcasite pavé accents in sterling silver.

Earrings

Pierced drops, 1 cm L. Mother-of-pearl inlay, 6 mm
223-971-0
64.99

Necklace

46 cm L with 3 cm extender and 4 cm L pendant. Mother-of-pearl inlay, 6 mm
223-970-9
69.99

Ring

2 cm diam. Mother-of-pearl inlay, 6 mm
 5 **223-967-5**
 6 **223-967-6**
 7 **223-967-7**
 8 **223-967-8**
 9 **223-967-9**
 10 **223-968-0**
69.99



**BEAUTIFUL
STERLING**

Genuine Mother-of-Pearl and gemstones set in .925 sterling silver for a lifetime of beauty.

NEW

Sterling Silver Mystic Topaz Collection

Genuine purple and green topaz stone set in .925 sterling silver.

Necklace

$\frac{3}{4}$ -ct. weight equivalent. 46 cm L with 3 cm extender and 2 cm L pendant.
223-536-1
84.99

Earrings

$\frac{1}{2}$ -ct. total weight equivalent. 1 cm L. Fishhook.
223-538-5
77.99



Ring

1-ct. weight equivalent.
 5 **223-536-2**
 6 **223-536-3**
 7 **223-536-4**
 8 **223-536-5**
 9 **223-536-6**
 10 **223-536-7**
84.99

Ring sizer, page 163

NEW

Sterling Silver Clover Collection

Clear cz pave set in .925 sterling silver.

Earrings

Pierced studs.
223-535-6
64.99

Ring

5 **223-542-1**
 6 **223-542-2**
 7 **223-542-3**
 8 **223-542-4**
 9 **223-542-5**
 10 **223-542-6**
64.99

Necklace

46 cm L with 3 cm extender and 2 cm L pendant.
223-535-3
69.99



SHINE IN STERLING

Awe-worthy jewelry that lasts a lifetime.

Sterling Silver Oceanic Collection
Genuine London Blue Nano stones and cz accents set in .925 sterling silver.

Necklace
3/4 carat total weight equivalent. Chain, 46 cm L with 3 cm extender and 1 cm L pendant. **223-521-8**
77.99

Ring
3/4 carat total weight equivalent. 0.5 cm diam.
5 **223-522-0**
6 **223-522-1**
7 **223-522-2**
8 **223-522-3**
9 **223-522-4**
10 **223-522-5**
64.99

Earrings
1/2 carat total weight equivalent. Pierced studs. **223-521-9**
69.99



NEW

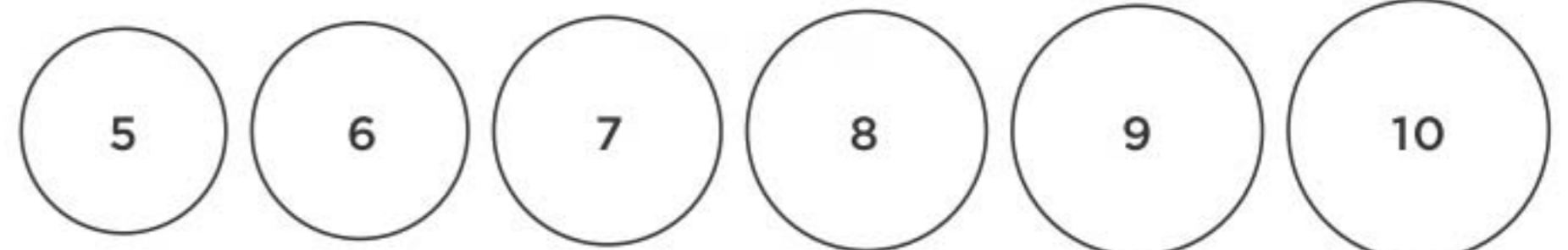
Sterling Silver Pavé Stud Earrings
3/4 carat total weight equivalent iridescent cz stones with cz pavé. Pierced. **223-531-9**
47.99

Sterling Silver Emerald Nano Stone Drop Earrings
3/4 carat total weight equivalent emerald Nano stones set in sterling silver with clear cz accents. Fishhook. Pierced. **223-530-1**
55.99

Sterling Silver 2-Pack Earrings
Freshwater pearls and 1 carat total weight equivalent cz set in sterling silver. Pierced studs. **223-529-7**
55.99 the set



FIND YOUR RING SIZE match your ring to one of these circles



CUCINA ESSENTIALS

❖ Cucina Essentials Multi-Purpose Wipes

Naturally derived formula with citric acid and pomegranate vinegar. Dermatologically-tested. Pomegranate scent. 60 wipes. **223-134-2** reg. 10.00

7.00 pack of 60 wipes



Now 10%
thicker
sheets

❖ Cucina Essentials Automatic Dishwasher Detergent

All-in-one detergent and rinse aid cleans and prevents water stains. Water-soluble formula dissolves easily in wash cycle. Nature-derived ingredients. Phosphate/toxin-free. Fresh citrus scent. 55 tablets.

222-709-1
reg. 20.00

17.00
pack of 55 tablets



❖ Cucina Essentials Dish Soap

Free of six chemical preservatives. No animal testing or animal ingredients. Each, 490 ml

Lemon & Verbena
222-445-2
Garden Basil
222-445-1
10.50 each



❖ Dish Scrubber Refills

Pack of 3 scrubber refills. Fits Cucina Dish Scrubber. 11 cm L x 7 cm W x 2 cm H. Foam.

222-910-7

7.00 pack of 3



2-PIECE KIT INCLUDES:

- 1 scrubber handle with hook-and-loop fastener
- 1 scrubber

❖ Dish Scrubber Kit

Get a handle on dirty dishes! 31 cm L x 7 cm W x 6 cm H. Plastic/foam.

222-910-6

12.00

the 2-piece kit



❖ Cucina All-Purpose Cleaner

Free of phthalates, formaldehyde, chlorine, parabens and glycol ethers. 500 ml

Coriander and Olive Tree
222-614-7
Lime Zest and Cypress
222-614-8
12.00 each



CUCINA ESSENTIALS

fresh & CLEAN

1 litre concentrated dish soap refill



Biodegradable soap formula is as gentle on dishes as it is on the environment.

❖ Concentrated Dish Detergent Refill

1 Litre
Lime Zest and Cypress **223-212-4**
Sea Salt and Amalfi Lemon **223-212-5**
Coriander and Olive Tree **223-212-3**
20.00 each or...

CHOOSE ANY 2 FOR 30.00
MIX OR MATCH
PAGE 165

To get the 2 FOR price, please order in multiples of 2.



FRESH FIJI

❖ Sheet Detergent

100% water soluble. With baking soda and natural fragrance oils. Works in all washers. For machine wash fabrics only. Sheets can be cut depending on your laundry load. 30 fast-dissolving sheets, each 23 x 20 cm

Lavender 223-206-7

Fresh 222-440-7

reg. 20.99

15.99 each



Up to 60 loads

❖ Laundry Stain Remover Spray

Pre-treats and removes tough set-in stains with a powerful enzyme formula. For direct application without damaging fabrics.

500 ml
222-485-0
13.99



❖ Fabric Refresher with Wrinkle Release

Freshen fabrics and smooth wrinkles.

Fresh:
Clean laundry scent
222-445-0
12.99



❖ Shoe Deodorizer

With baking soda and persimmon. Great for all kinds of shoes, from leather to cotton.

300 ml
222-442-7
11.99



❖ Gel Bead Deodorizer

Neutralizes odours.

Each, 150 ml
Calming Lavender 222-445-3
Fresh Cotton 222-443-0

11.99 each



❖ Color Booster & Stain Remover

Eliminates stains and odours, whitens whites and brightens colours.

Each, 2.2 litres
222-700-6
reg. 62.99
56.99
the pack of 3



WASH MORE, for less

Cleaning power for 63 loads!*

❖ 4X Super Concentrated Liquid Laundry Detergent

Seven stain-removing enzyme-blend and 4X concentrated cleaning power in every drop for whiter and brighter clothes. Prevents future stains with continued use. Works in all washers. For machine wash fabrics only. Contains no phosphates or optical brighteners. Dermatologically-tested. 1 litre **222-941-2** reg. 20.99

SPECIAL 15.99



HOT WINTER Sale

HOMESTAR makes household chores a breeze!

❖ **Bathroom Cleaner**

Fights tough soap scum, limescale, calcium and grime. Triple-action low-pH formula safely breaks down and removes messes. 750 ml
222-708-9
12.99



❖ **Multi-Purpose Cleaner**

Bleach-free, triple-action power cleaner for the kitchen and beyond. With citric acid, orange oil and baking soda to remove stubborn water stains. Natural citrus scent. For use on nonporous surfaces only. 500 ml
223-134-0
11.99



❖ **Rangehood and Kitchen Degreaser**

Double-solvent solution blend for hard-to-remove grease stains on rangehoods, stovetops, BBQ grills and more! Just spray and watch foaming bubbles go to work, then simply rinse. External oven use only. 480 ml
223-134-1
15.99



❖ **Heavy Duty Cleaning Wipes**

Textured pattern to cut through the toughest messes including oil. No rinsing needed. 50 sheets. Each, 24 x 28 cm. 223-327-0
12.99 pack of 50

Fresh lemon scent



❖ **Odor Eliminator for Fridge**

No-spill solid gel formula with persimmon and eucalyptus extracts neutralizes odours in fridge. After gel dissipates, simply recycle the plastic container. 420 g
223-153-0
11.99



Lasts up to 3 months!

❖ **Homestar Bathroom Scrubber Refills**

Disposable. Fits Homestar Bathroom Scrubber. 14 cm L x 8 cm W. Foam.
222-910-5
reg. 5.99
4.99
the pack of 3

Pack of 3



sparkle CENTRAL

❖ **Homestar Foaming Toilet Bowl Cleaner**

Fights toilet rings and stains. Convenient pouch dispenser. Use every two weeks. Each pouch, 60 g. Pack of 5.

❖ **Bathroom Scrubber Kit**

14 cm L x 8 cm W. Plastic/foam.

PACK OF 5
Powerful
foam-cleansing
action! Pour in,
flush later!



KIT INCLUDES
1 handle and 1
scrubber

896-376-9
BOTH FOR
18.99
Value: 22.98

❖ **Morning Aura Bottle Brush Set**

Plastic/TPR. Includes:

A. For glasses, water bottles, thermoses, and more. 35 cm L x 6 cm diam.

B. For cleaning reusable straws and small items. 26 cm L x 1 cm diam.

C. For water bottle caps and smaller surfaces. 11 cm L x 4 cm diam.

222-942-6
14.99 the set



3-piece set

❖ **Glass Cleaner**

Keep windows, mirrors, glass and more sparkling clean. Removes dirt, grime and fingerprints. Quick-drying, anti-fogging formula. 500 ml **222-709-0**
9.99



❖ **Moisture Absorber**

Absorbs excess moisture and prevents mildew and musty odours. 3 containers, 275 g each. **223-322-8**
8.99
pack of 3



Pack of 3

❖ **Morning Aura Bottle Cleaner**

Effervescent cleaning tablets break down and lift stains from water bottles. Let sit and rinse. Includes *Cleaning in Progress* sticker included. 42 g total. **223-056-7**
8.99
pack of 12 tablets



WARNING: Liquid in bottle during cleaning process is harmful if swallowed. Use sticker provided and keep out of reach of children.

❖ **Microfibre Cloth Set**

Can be used wet or dry. Mitt is one size fits most. Machine wash, line dry. Polyester/polyamide. Includes:

- 1 large towel: 102 cm L x 49 cm W
- 1 small towel: 71 cm L x 29 cm W
- 1 mitt: 21 cm L x 21 cm W

222-803-7
reg. 27.99
19.99 the set



3-PIECE SET

dish it out

Cuts grease, removes old grime and stains for ultra-clean dishes.



vegan and cruelty-free certified

super-sized 4-piece value pack!



❖ **Morning Aura Dish Soap Ultra Degreaser***

Cuts grease, removes old grime and stains for ultra clean dishes. Vegan and cruelty-free certified. Each, 1.95 litres. **222-700-7**
reg. 55.99

49.99 pack of 4



*Read and follow label directions and precautions.

mop it up!

❖ **Mop Stick**
Full length, 1 metre.
Head, 25 cm L x 10 cm W.
Plastic/EVA/aluminum.

❖ **Disposable Mop Cloths**
Can be used with or without mop. Safe on most finished floors. 40 sheets each, 22 cm L x 10 cm W.
Wet or dry cloths available.



Textured dot pattern grabs dirt & dust



Saturated thick cloth stays wet



Textured cloth reduces friction



896-376-6
MOP STICK AND WET MOP CLOTHS BOTH FOR 26.99
34.98 value



Textured diamond pattern grabs dirt, hair & pet fur



Locks in dust using static electricity



Textured cloth reduces friction



896-395-4
MOP STICK AND DRY MOP CLOTHS BOTH FOR 26.99
30.98 value



360° SWIVEL head with cloth grippers and easy-grip handle

scrub a pup



❖ **Sirius Groom Shampoo for Dogs**
Helps alleviate itchiness and dryness by washing away allergens. Formulated with oatmeal to help soothe skin. pH-balanced formula. Long-lasting scents. Nature-derived ingredients. 480 ml
Baby Powder 223-087-3
Lovely Berry 223-087-2
16.99 each



❖ **Sirius Groom Odor Eliminator**
Removes the toughest pet odours from fabrics and carpets. Leaves a light and fresh baby powder scent. Nature-derived ingredients including rice and barley to neutralize and absorb odours. For fabric and carpet use only, do not spray on pets. 400 ml
223-087-4
13.99



removes pet odours
(NOT FOR USE ON PETS)

AVON PURE ESSENTIAL OILS

Grapefruit

Brighten up your day.
Grapefruit peel oil.
223-206-3
reg. 24.00
21.00

Lavender

Calms and soothes.
Helps with balance and
restfulness. **223-202-9**
reg. 24.00
21.00

Eucalyptus

Refreshes the mind.
Rejuvenates the
senses. **223-204-1**
reg. 20.00
18.00

Peppermint

Pep up with the
stimulating, refreshing
and invigorating
benefits of peppermint.
223-203-0
reg. 23.00
19.00

Rosemary

Stuck in neutral? This
will help you get going.
Rosemary leaf oil.
223-206-5
reg. 24.00
21.00

❖ Avon Pure Essential Oils

- Paraben/gluten/
phthalate/sulfate-free.
 - Vegan
- 10 ml



good vibes
are in
THE AIR

Single notes to use with
a diffuser, to scent your home and
fill your space with your favourite
pure essential oils.



Read and follow label directions and precautions. For a complete list of ingredients, visit avon.ca

get your **ZEN ON**

Blended oils to suit your
mood. Use with our
Avon Pure Diffuser and
you've got a match made
in heaven!

❖ Avon Pure Diffuser

LED light-up diffuser with three
different settings releases a fine
mist of essential oil and water
into the air and helps refresh and
purify your surroundings. 17 cm H.
USB connection (USB power cord
included). **222-928-9**
42.00



Sweet Dreams

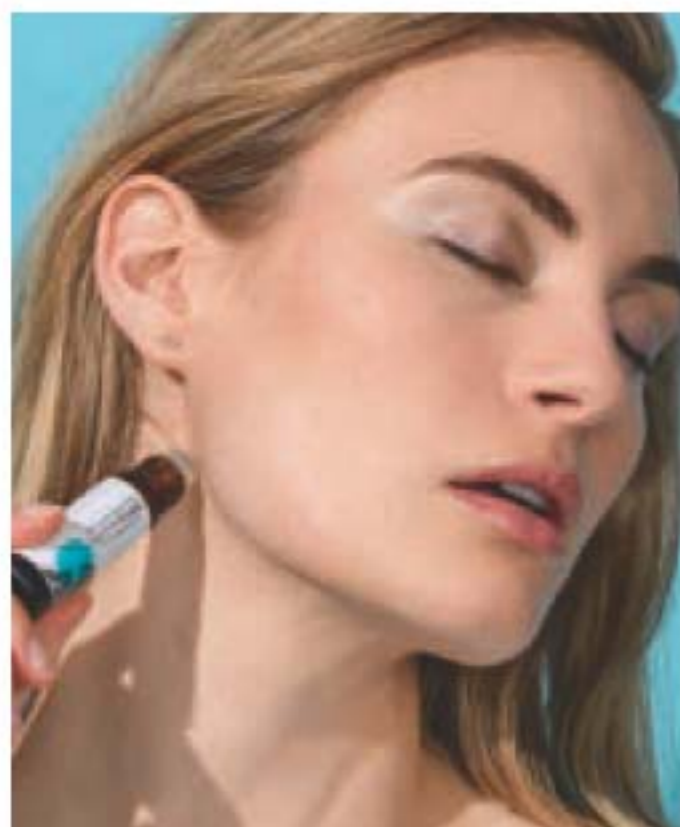
Create a serene
environment for
restful thoughts.
With lavender and
chamomile. **223-203-6**
reg. 27.00
24.00

Zen

Awaken an all-over
sense of tranquility with
lavender, peppermint and
chamomile. Namasté.
223-203-1
reg. 27.00
24.00

Happiness

Infuse the air with joy
and exhilaration. Breathe
it in. With grapefruit,
lemon and sweet orange.
223-203-2
reg. 19.00
17.00



AVON PURE essential oils

essential OIL

Pure bliss... wherever you go!
Pop a rollette in your pocket or purse
and instantly transform your day.



A. Focus
Helps boost alertness and concentration. With sweet almond oil, lemon peel oil and rosemary leaf extract.
223-206-1

B. Energize
Wakes you up from that mid-day slump. With sweet almond oil, grapefruit peel oil, sweet orange peel oil and rosemary leaf extract.
223-204-2

C. De-Stress
Like yoga in a bottle...it helps calm you. With sweet almond oil, lavender and peppermint.
223-204-8

❖ **Avon Pure Roll-On Essential Oils**
• Paraben/gluten/phthalate/sulfate-free
• Vegan
• Made in Canada
10 ml
reg. 24.00
21.00 each

stylish & sleek

ideal storage solution for your
essential oil collection

WELLNESS



Makes a great gift!

Holds up to 48 essential oils



Comes empty.

NEW

❖ **Avon Pure Essential Oil Case**
Top tray holds 24 roll-on vials; bottom tray holds 24 essential oil vials. Sturdy case. Polyester/cardboard. 21 cm L x 15 cm W x 19 cm H. **223-818-0**
58.00

essential oil SPRAYS

Enjoy the benefits of premium quality essential oils.

❖ **De-Stress Relaxing Essential Oils Mist**

Made from a blend of lavender, sweet fennel, peppermint and Roman chamomile essential oils. Made in Canada. 115 ml
224-101-5
29.00



HOW TO USE:
Mist your space or apply to your body to create a sense of calm and wellbeing.



HOW TO USE:

Spray 2-3 times on the back of your neck, 1-3 times per day.

❖ **Avon Pure Essential Oils Keep Your Cool Cooling Mist**

Clary sage, known for its relaxing qualities, plus the cooling combination of peppermint and menthol, provide fast cooling relief to skin. Made in Canada. 115 ml 223-207-9
24.00

HOW TO USE:

Spray lightly on your pillow for a soothing night's sleep.

❖ **Avon Pure Essential Oils Lavender Pillow Spray**

Shake well before use. Vegan. Not tested on animals. Petroleum/chlorine bleach/ammonia/phosphate-free. Made in Canada. 115 ml 223-208-1
27.00

100% PURE natural deodorant



- 24-hour odour protection
- aluminium/paraben-free vegan formula
- Suitable for sensitive skin

❖ **Natural Deodorant**

Non-whitening formula is tough on odours while being gentle on skin. Made in Canada. 50 g
Fresh Lavender (made with lavender oil) 224-070-0
Citrus Zest (made with citrus oils) 224-368-2
Fragrance-Free (no essential oils) 224-368-3
9.00 each or...

**ANY 2 FOR
15.00**
MIX OR MATCH
PAGE 179

To get the 2 FOR price, please order in multiples of 2.

Avon Aromatherapy essential oils

four ways to use:

1. Apply directly on skin (wrists, neck, temples, base of skull, bottom of feet).
2. Add to a warm bath.
3. Mix into body lotion.
4. Add to a room diffuser.

Minding My Mood 4-in-1 Essential Oil Blends

Each, 50 ml **221-839-6**

INCLUDES:

Calm Oil

Find your inner bliss with comforting lavender and soothing star anise.

Energize Oil

Feel refreshed and focused with lively mandarin and stimulating ylang-ylang.

reg. 40.00

35.99 the set



beauty sleep

lightweight mask blocks out light and helps enhance your sleep, day or night

BATH & BODY

sparkling grapefruit & orange blossom



Passion & Beyond Rose Silk Bouquet Shower Gel

Soft, silky lather of nourishing plant-derived glycerin and a naturally derived, mild cleanser leaves skin refreshed, 300 ml

222-568-3

reg. 33.00

26.00

Passion & Beyond Rose Silk Bouquet Body Emulsion

Elegantly scented with calming damask rose water and infused with moisturizing and soothing provitamin B5, it helps revitalize tired skin. 300 ml

222-568-4

reg. 40.00

31.00



Great for travel

Unisex

Black Sleep Mask

Cotton. Machine wash, line dry. One size fits most. 21 x 10 cm

223-953-8

7.99

limited quantities

PHYSIOGEL Dermatologist-recommended worldwide.

FOR FACE

Daily Moisture Therapy Intensive Cream

Rich daily facial cream provides long-lasting, intensive moisturization. 100 ml **222-791-4** reg. 56.00 **44.99**



FOR BODY

Daily Moisture Therapy Body Lotion

Lightweight, quickly absorbed lotion with the feel of a light emulsion cream. 200 ml **222-791-3** reg. 42.00 **33.99**



FOR FACE

Daily Moisture Therapy Facial Lotion

Lightweight, quickly absorbed lotion with the feel of a light emulsion cream. 200 ml **222-615-5** reg. 45.00 **34.99**



FOR FACE

Daily Moisture Therapy Facial Cream

Day cream provides long-lasting moisture for normal to dry sensitive skin.

F. 150 ml **222-615-9** reg. 59.00 **47.99**

G. 75 ml **222-615-7** reg. 41.00 **32.99**



FOR FACE

Calming Relief A.I. Lotion

Facial lotion for instant and long-lasting, soothing relief of redness and itching due to dryness. Light cream emulsion. 200 ml **222-791-7** reg. 59.00 **47.99**



FOR FACE

Calming Relief A.I. Cream

Facial cream for instant and long-lasting, soothing relief of redness and itching due to dryness. 100 ml **222-791-9** reg. 59.00 **47.99**



Hypoallergenic and non-comedogenic. No fragrances, preservatives or colourants.



HOT WINTER Sale



Facial cleanser for dry and sensitive skin

FOR FACE

Dermo-Cleanser

Mild and gentle, soap-free facial cleanser. Appropriate for frequent use, with or without water (can apply with cotton pad). Leaves skin feeling clean and soft. 150 ml **222-791-5** reg. 34.00

LIMITED TIME OFFER
19.99

SKIN SO SOFT ORIGINAL



Gelled Body Oil
Dries to a silky finish.
200 ml
107-681-4
reg. 19.00
10.99



Original Shower Gel
Gently cleanses and hydrates.
150 ml
107-681-0
reg. 12.00
5.99



BONUS SIZE Bath Oil
739 ml
107-681-5
reg. 42.00
26.99



Hand Cream
100 ml
107-728-6
reg. 7.00
3.99

Original Lip Balm
With jojoba oil, shea butter and aloe extract. Grape flavour. 4 g
222-944-2
reg. 3.00
1.99



the original

The one that started it all. Jojoba oil has nourishing vitamins and minerals, and it mimics the natural oils in your own skin!



Bath Oil Spray
Locks in moisture.
150 ml
220-916-7
reg. 20.00
11.99

soft & sensual

the wonder of argan oil So precious, they call it "liquid gold." Packed with vitamin E, it helps to visibly restore skin's lustre and keep it feeling irresistibly soft.

Hand Cream
100 ml **114-351-6**
reg. 7.00
3.99

Body Lotion
Layers on nourishing moisture. 350 ml
107-757-5
reg. 16.00
9.99

SKIN SO SOFT

Shower Gel
Gently cleanses and hydrates.
150 ml
107-743-5
reg. 12.00
5.99



Gelled Body Oil
Dries to a silky finish.
200 ml
111-777-4
reg. 19.00
10.99



BONUS SIZE Bath Oil
739 ml
107-736-1
reg. 42.00
26.99



nourishing bath oils

Skin So Soft Bath Oil

Locks in hydration during a bath or shower and leaves skin feeling soft and smooth. 500 ml
Original **107-681-3**
Soft & Sensual **107-743-7**
Comforting Shea **121-648-7**
reg. 34.00
21.99 each



**Radiant Moisture
BONUS SIZE
Bath Oil**
739 ml
107-681-1
reg. 42.00
26.99



**Radiant Moisture
Shower Gel**
150 ml
107-736-0
reg. 12.00
5.99



**Radiant Moisture
Hand Cream**
100 ml
107-728-7
reg. 7.00
3.99



**Fresh & Smooth
Sensitive Skin Body
Hair Removal Cream**
125 ml 107-728-5
reg. 14.00
7.99



**Fresh & Smooth
Sensitive Skin Facial
Hair Removal Cream**
30 ml
107-728-2
reg. 14.00
7.99



supreme nourishment

with Enriching Coconut Oil

SKIN SO SOFT SUPREME NOURISHMENT

Milk Lotion

With skin-softening
coconut milk.
350 ml
221-206-4
reg. 24.00
14.99

Oil Wash

Softens with
coconut oil
and vitamin E.
350 ml
221-206-3
reg. 24.00
14.99

Body Soufflé

Airy, coconut
water-infused
soufflé leaves
skin feeling soft
all day. 200 ml
221-206-6
reg. 24.00
14.99

Lip Balm

With aloe
extract and
shea butter.
4 g
222-944-3
reg. 3.00
1.99



Tropical
coconut
flavour

indulge in luxury

Pamper yourself in a world-class spa experience with natural ingredients sourced from around the world for the ultimate veil of moisture.



Calming sage scent

VEILMENT NATURAL SPA

Himalaya Pink Salt Exfoliating Soap
Cleansing bar, with mineral-rich Himalayan pink salt, walnut shell, apricot seed and cranberry powder. Calming sage scent. 150 g **222-462-0** reg. 12.00 **8.50**

Himalaya Pink Salt Body Scrub & Cleanser
Formulated with mineral-rich Himalayan pink salt. Calming sage scent. 400 ml **221-903-4** reg. 21.00 **18.00**

Black Rose Body Scrub & Cleanser
Formulated with French rose oil and apricot seed powder. Aromatic black rose scent. 400 ml **221-902-1** reg. 21.00 **18.00**

Dead Sea Salt Body Scrub & Cleanser
Formulated with Israeli Dead Sea salt. Energizing citrus-ginger scent. 400 ml **221-902-8** reg. 21.00 **18.00**

Bamboo Charcoal Body Scrub & Cleanser
Infused with natural plant-derived exfoliants, including Korean bamboo charcoal, Israeli Dead Sea salt, apricot seed and spruce. 400 ml **222-443-6** reg. 33.00 **25.00**



Lather and detoxify with this charcoal-infused bath pouf

Charcoal Bath Pouf
12 cm diam.
Polyethylene/polyester/
charcoal powder.
223-981-5
4.99
limited quantities

véilment hemp seed oil ultra-nourishing

A naturally derived oil enriched with **omega-3-6-9 fatty acids and vitamin E.**

Lip Balm

Hemp-infused lip balm enhanced with moisturizing jojoba and coconut oils for deeply hydrating, naturally conditioned lips. 4 g
Red **222-938-0**
Clear **222-938-1**
reg. 3.50
2.49 each

Bathing Bar

Gently cleanses without stripping skin's moisture. Leaves skin feeling soft and nourished. 90 g **222-338-7**
reg. 7.00
6.00

Shower Shake

Creamy yet light. Leaves skin feeling sumptuously soft and smooth. Shake before use. 300 ml
222-338-5
reg. 33.00
25.00

Dry Body Oil

Helps deeply nourish and hydrate dry skin to keep it looking healthy. 150 ml
222-338-6
reg. 49.00
40.00



véilment macadamia oil

Rich in vitamins and omega acids for **luxuriously nourished**, soft skin and antioxidants to help skin look **radiantly youthful.**

Revitalizing Foaming Shower Gel

A gel cleansing foam infused with macadamia nut oil to deeply nourish and condition skin so it feels soft and pampered. 190 g
221-483-6
reg. 34.00
27.00

Revitalizing Body Mousse

A soft, foamy mousse that deeply nourishes skin with pampering macadamia nut oil. So lightweight, it quickly melts into the skin for long-lasting moisturization. 190 g **221-483-5**
reg. 34.00
27.00

Wooden Bath Brush

Wash with soap and water, hang to dry between each use. 35 cm L x 7 cm W. Boar hair bristles/lotus wood handle/polypropylene cord.
222-552-3
10.99
limited quantities



PERIOE ORAL CARE

Himalaya Pink Salt Toothpaste Tube Ice Mint

Pink gel paste with aloe vera essence beads. 100 g
222-245-5
 reg. 9.00
7.00

Himalaya Pink Salt Toothpaste Pump Ice Mint

Creamy paste in easy-to-use pump. 285 g
222-245-6
 reg. 17.00
14.00



Royal Black Bee Honey Mint Toothpaste

Fluoride-free. With royal jelly and Australian propolis extract. With regular brushing this toothpaste helps fight plaque and whiten teeth. 100 g
222-555-7
 reg. 9.00
7.00

Honey mint flavour

Two minty flavours and colour-coded brushes.

White Action Toothpaste

Fluoride-free formula with baking soda effectively cleans and whitens teeth, and naturally refreshes breath. Each, 160 g
 Strong Mint **222-694-6**
 Original Mint **222-694-5**
 reg. 6.00
4.19 each

White Action Toothbrush

Effectively removes plaque and surface stains. Easy-grip rubber pads. Round-edge medium bristles for a gentle clean and healthy mouth.
 Green **222-711-7**
 Blue **222-694-7**
 reg. 3.00
2.49 each



PERIOE ORAL CARE

Whitening Essentials Fluoride Toothpaste with Charcoal White - Fresh Mint

With fluoride to help prevent cavities, and green mint for a natural fresh feeling. 156 g
222-710-2
 reg. 13.00
11.00

Whitening Essentials Fluoride Toothpaste Original Cool Mint

Anti-cavity formula helps to whiten teeth and to remove surface stains. 156 g
222-710-1
 reg. 13.00
11.00



Thera-White Teeth Whitening Pen

Clear gel with hydrogen peroxide and easy silicone tip. 4 ml
222-825-6
 reg. 37.00
27.99

Instantly removes stains from food, coffee, wine and lipstick

The whitening power of the hydrogen peroxide powered gel is activated once it combines with the boosting toothpaste.

Thera-White Teeth 2-in-1 Whitening Toothpaste

Booster gel activates whitening toothpaste to remove stains and whiten teeth faster and more effectively than with either alone. Fluoride-free. Innovative dual system. Booster gel accelerates whitening power. Whitening toothpaste with hydrogen peroxide. 140 g
 reg. 42.00
35.99 each



Pink Mild Mint
222-371-9



Charcoal Cool Mint with activated charcoal
222-431-6



LISTERINE® REACH® your oral care is in good hands

designed for wider-set teeth

**Cool Mint™
Extra-Wide Waxed Floss**
A hint of mint flavour every time you floss. Polypropylene multi-filament/wax. 41.1 metres
223-266-8
3.49



Waxed Floss
For a cleaner, fresh breath feeling. Polypropylene multi-filament/wax. 50.3 metres

Cool Mint™
A hint of mint every time you floss.
223-266-7

Fresh Burst™
Leaves your mouth feeling fresh with a burst of mint. **223-267-1**

2.99 each



**Ultraclean™
Flosser + 8 Heads**
Includes 1 flosser and 8 disposable snap-on heads that enable quick, hygienic changes. Polypropylene multi-filament/plastic.
223-268-0
6.99 9-piece set



TO USE:
Move floss up and down between each tooth. Clean below the gum line. Rinse floss as needed. Replace head daily.



Waxed Floss
Polypropylene multi-filament/wax. 182.8 metres

Unflavoured
This unflavoured floss slides easily and cleans between teeth for a fresher mouth and healthier smile.
223-268-4

Fresh Burst™
Leaves your mouth feeling fresh with a burst of mint.
223-267-0

7.99 each



always on call for the mistletoe

Tagging along with your phone, your lip balm is within reach at all times!



Combines convenient and trendy PopGrip design with moisturizing lip balm.

Strawberry
224-313-7



Vanilla
224-364-3



NEW

REACH Pop-Up Lip Balm
Moisturize and soften lips anywhere, anytime. Affixes to back of phone securely and won't open unexpectedly or when in bottom of bag. Glides on clear and easily. 1.7 g
reg. 25.00
19.99



ITCH RELIEF

Anti-Itch Cream

For temporary relief of minor irritations due to eczema, psoriasis and insect bites. Suitable for sensitive skin. Medicinal ingredient: Hydrocortisone, 0.5%. 56.7 g
223-102-7
 reg. 13.99
11.49



BACK & JOINT PAIN

Pain Relief Cream for Muscles, Back and Joints

Temporary relief of aches and pains of muscles and joints associated with backaches, lumbagos, strains and sprains. Medicinal ingredients: Methyl Salicylate, 30%, Menthol, 10%, Camphor, 4%. 56.7 g
223-101-1
 reg. 13.99
11.49



FOR CUTS, SCRAPES & BURNS

Poly Antibiotic Ointment

Helps prevent infection in minor cuts, scrapes and burns. Active ingredients: Bacitracin and Polymyxin B Sulfate. 28 g
223-103-0
 reg. 19.99
15.49



DEEP & POTENT PAIN RELIEF

Arthritis Pain Relief Cream

Temporarily relieves aches and pains of muscles and joints associated with arthritis. Odour-free. Medicinal ingredient: Capsaicin, 0.107%. 42.5 g
223-102-6
 reg. 19.99
15.49



SOFY

Organic cotton pads and panty liners to help you stay dry and protected, and to keep you feeling your best.

- **100% organic cotton** certified by internationally accredited OSC (Organic Content Standards)
- Free of dye, fragrance and chlorine... so **won't irritate your intimate areas**
- Thin, flexible material
- Unique design for **instant absorption and prevention of side leakage**
- **Full coverage** from light to heavy flow
- **Secure adhesion**



BATH & BODY



SOFY® 100% Organic Cotton Cover Pads and Panty Liners

Regular Panty Liners
 Pack of 40, 15 cm L.
223-211-7
 reg. 17.49
13.99 the pack

Regular Pads
 Pack of 20, 25 cm L.
223-208-3
 reg. 17.49
13.99 the pack

Overnight Pads
 Pack of 10, 33 cm L.
223-211-6
 reg. 13.99
11.49 the pack

your solution to thinning hair

DR. GROOT MICROBIOME

Infused with ginger and ginseng known to soothe redness and itching, and biotin to help thicken hair. No sulfates, parabens or silicones.



Scalp Fortifying Exfoliating Shampoo
With rosemary extract, it gently exfoliates, helping to remove dirt and impurities. 250 ml
222-566-1
reg. 49.00
41.00



Scalp Fortifying Serum Treatment
Upon contact with water, the concentrated liquid transforms into a creamy formula that moisturizes and helps support healthy hair roots. 200 ml
222-566-2
reg. 49.00
41.00



Scalp Fortifying Hair Thickening Shampoo
With coconut oil, it deep cleanses while helping moisturize dry scalp and hair. 400 ml
222-566-0
reg. 49.00
41.00



Scalp Fortifying Massaging Tonic
With sophora root, an herb known to help support scalp health. Massage it in to help hair follicles absorb essential nutrients. 150 ml
222-566-3
reg. 66.00
55.00



HAIR CARE

scalp
cleansing
brush



NEW

Dr. Groot Premium Scalp Cleansing Brush
Helps promote cleansing of residue while messaging to reinvigorate health of scalp as it helps to stimulate circulation and hair follicles. **223-965-9**
reg. 26.00
21.00



Elastine Propolithera

NO sulfates or parabens



A. Volumizing

Adds weightless volume and enhances texture to make hair look fuller, thicker and stronger. 500 ml
Shampoo 222-244-8
Conditioner 222-244-9
 reg. 26.00
22.49 each

D. Damage Repair

Helps repair and soften damaged hair so it appears smooth and manageable. 500 ml
Shampoo 222-245-1
Conditioner 222-245-2
 reg. 26.00
22.49 each

B. Hair Mask

Enriched with nutrients to help deeply nourish hair and mend damaged split ends. 300 ml
222-245-3
 reg. 26.00
22.49

C. Hair Oil Serum

Helps to strengthen, protect, moisturize and smooth hair, and to add shine, while styling. 170 ml
222-245-4
 reg. 26.00
22.49



styling boosters

Nourish dry, thin and weak hair with the goodness of honey, vitamin-enriched propolis extract and royal jelly.

E. Aloe Dual-Active Hair Serum

Packed with intensive hydration, it penetrates each strand with nutrients from vitamins and minerals to bring damaged or chemically processed hair back to life. Hydra Emulsion and Nutri Essence, 50 ml each. **222-551-2**
 reg. 42.00
35.00

F. Curl Cream

Rich hydration for bouncy, defined curls. Reduces frizz for a smooth, healthy-looking shine. 150 ml
222-551-0
 reg. 27.00
21.00

G. Volume Spray

Adds weightless volume and lustrous texture to thinning hair. 200 ml **222-551-3**
 reg. 27.00
21.00

H. Leave-In Conditioner

Hydrates and nourishes dry hair, infusing it with rich lustre. 240 ml **222-551-1**
 reg. 27.00
21.00

I. Rejuvenating Serum Treatment

Upon contact with water, nutrient-rich liquid visibly transforms into a creamy formula. 230 ml
222-627-0
 reg. 31.00
26.00

J. Rejuvenating Volumizing Mousse

Lightweight formula helps add lift, bounce and body. Enhances elasticity and minimizes breakage for a flexible hold with natural-looking, long-lasting style and shine. Protects against heat, so it's perfect for blow-drying. 142 g
222-551-4
 reg. 27.00
21.00



complete COLOR & CARE

Introducing Elastine SALON de Color

100% grey coverage and rich, long-lasting color in a nourishing cream formula with **pro-keratin**, **collagen** and **ceramides** for your most luxurious locks and healthy-looking hair that's silky to the touch. Plus, we never use ammonia, parabens, mineral oil, or benzophenone. **Superior results. No appointment necessary.**



BLONDES



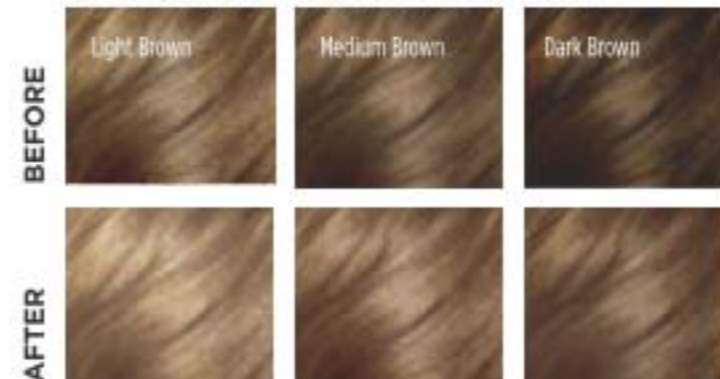
10BL / Extra Light Natural Blonde 223-437-9



8BL / Medium Golden Blonde 223-437-8



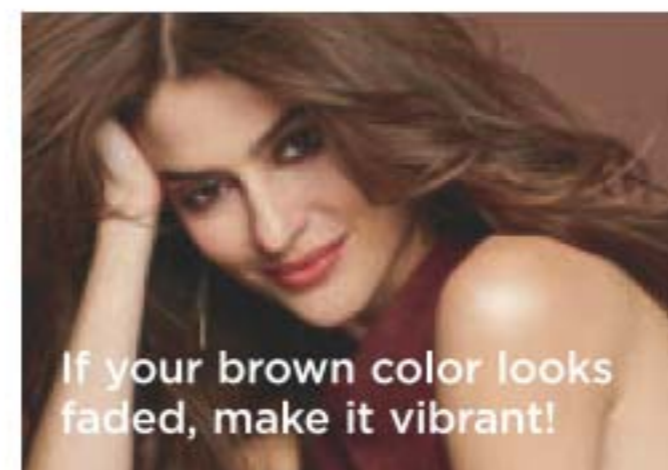
7BL / Natural Dark Blonde 223-437-7



Elastine Salon de Color Permanent Hair Color Kit

- Includes:
- Pre-color treatment
 - Developer Crème
 - Color Crème
 - Rejuvenating hair mask
- reg. 13.99
11.99 each kit

BROWNS



4 / Dark Brown 223-437-1



4B / Dark Chocolate Brown 223-437-2



5B / Medium Maple Brown 223-437-5



5CB / Medium Chestnut Brown 223-437-4



BLACKS



2 / Soft Black 223-436-8



REDS & AUBURNS



4R / Dark Mahogany Red 223-437-3



6R / Light Auburn 223-437-6



CHI® PRO TOOLS for salon-quality results

BioSilk® Silk Therapy® Leave-In Treatment

Tames frizz and flyaways and leaves hair silky smooth with reflective shine. Helps shield hair from UV rays, heat and humidity. 167 ml
222-387-5
 reg. 48.00
39.00



Smooth as silk... weightless, leave-in silk treatment

Styling Cream Gel

Create sleek styles or enhance natural curls with this workable styling cream gel with a light-hold, non-flaking formula that adds incredible shine and control to any style. Enriched with silk to strengthen hair. 177 ml
222-521-4
 reg. 29.00
24.00



Perfect prep for smooth blowouts

ENVIRO 54® Natural Hold Hair Spray

For brushable hold of any style and texture. Anti-humidity. Thermal protectant ideal for blow drying. With silk to help build hair's strength and resilience, and natural botanicals to add volume and enhance shine. Paraben-free. 284 g
222-539-3
 reg. 38.00
31.00



Lightweight and fast-drying with no build-up



❖ Advanced Ionic Compact Hair Dryer

Powerful 1875-watt ion generator emits negative ions to reduce drying time for shiny, smooth, frizz-free hair. Adjustable heat and air-speed settings. 1.9 metre cord.
222-337-9
 reg. 175.00
159.00

❖ Volcanic Lava Ceramic Pro Spin 'n' Curl

2.5 cm (1") pro automatic rotating curling device. Preset temperature controls with adjustable timers and LED screen display, for all hair types. 30 cm L. Dual voltage for travel. 3.35 metre swivel cord.
222-338-1
 reg. 210.00
189.00



CHI® ESSENTIALS

Nutrient-rich hair care



HAIR CARE



Replenishing Shampoo

Gentle daily shampoo with essential vitamins, minerals and amino acids. No sulfates or parabens—so it won't strip hair of natural oils. Safe for colour-treated hair. 355 ml
222-707-3
 reg. 26.00
22.50



Moisturizing Conditioner

Lightweight daily conditioner. Infused with aloe to lock in rich moisture. With vitamins A and B to help strengthen hair from root to ends, increase elasticity and help smooth split ends and frizz. 355 ml
222-707-4
 reg. 26.00
22.50



Repairing Serum

Deeply penetrating-yet-lightweight serum helps strengthen, protect, moisturize and smooth. With vitamin A to help seal split ends, and rosemary to help boost volume and shine. 177 ml
222-707-5
 reg. 44.00
37.00



Thermal Protecting Spray

Helps protect hair from the damaging heat from styling tools. Silk molecules help lock in moisture and strengthen cuticles for frizz-free, shiny hair. 177 ml
222-707-6
 reg. 38.00
31.00

hemp for hair

Shampoo and conditioner with cold extracted hemp oil.

Elastine HempharmX

Contains **omega 3-6-9**, known to help moisturize and nourish hair, and prevent breakage for weightless hydration that delivers full volume. 400 ml

Shampoo **222-687-3**
Conditioner **222-687-4**
reg. 34.00
28.00 each



360 Nourish Leave-In Treatment with Moroccan Argan Oil

Formulated with argan oil, provitamin B5 and vitamin E, it helps to nourish and smooth, dry, damaged hair. 60 ml

119-335-1
reg. 22.50
14.99



Daily Shine Dry Ends Serum

Leaves hair soft, silky, smooth and healthy-looking. Can also be used on dry hair to smooth away frizz or fly-aways. 60 ml

243-496
reg. 16.00
10.49



Daily Shine 2-In-1 Shampoo & Conditioner

Cleanses and conditions in one simple step. Leaves hair looking soft, shiny and radiantly healthy. 350 ml

242-085
reg. 12.50
7.99



More than just a dry shampoo

Spray it, comb it...done! Cleanse hair between shampoos without water and maintain your freshly styled look.



HAIR CARE



Elastine Restore & Detox Dry Shampoo

Waterless, no-rinse leave-in shampoo, with detoxifying charcoal extract and soothing white tea powder, instantly absorbs oil, sweat and odour to leave hair cleansed and freshly scented with added volume to help extend styling. Clear or colour-matching formulas. Great for on-the-go. Residue-free. Each, 142 g

Enigmatic Dark **222-550-8**
Fearless Brunette **222-550-9**
Incredible Invisible **222-550-7**
reg. 27.00
22.49 each

Good Hair Day Satin Pillowcase

White, soft satiny pillowcase. Fits a standard size pillow. Polyester. 51 x 66 cm. Machine wash, hang to dry.

224-087-9

11.99

limited quantities



Soft fabric allows skin to breathe and prevents sleep creases

Marble Detangling Brush

ABS/thermoplastic polyester elastomer. 18 x 7 x 3 cm

223-251-1

8.99

limited quantities



Modern marble design



Ergonomic shape fits perfectly in your hand



5-COMB SET

From left to right:

- Rat tail comb great for teasing and parting hair
- Ideal for smoothing and styling
- Wide tooth comb for easy detangling
- 2-in-1 comb perfect for detangling and parting hair
- All-purpose comb

IT'S BACK!

5-Piece Comb Set

Plastic/metal. Combs, 19-23 cm L. Shiny black finish. 221-417-1

7.99 the set

limited quantities

elastine botanicals

Infused with revitalizing babassu seed oil, chamomile flower water, and lemon chestnut extract. pH balanced.



Avocado & Quinoa Anti-Frizz

With nourishing avocado oil and quinoa seed extract to help protect hair from damage and prevent breakage. 200 ml Shampoo 222-566-8 Conditioner 222-567-0

Rosemary & Sea Salt Volumizing

With rosemary to help promote thicker and healthier hair, and sea salt to add body. 200 ml Shampoo 222-566-6 Conditioner 222-566-7

Cherry Blossom & Hyaluronic Acid Moisturizing

Moisturize dry, damaged hair with our hyaluronic acid-infused formula as thirsty strands drink it up. 200 ml Shampoo 222-566-4 Conditioner 222-566-5

reg. 8.00

6.29 each



FOOT WORKS hard-working formulas for hard-working feet

Lavender Softening Balm
With vitamin E, jojoba oil, cocoa butter and shea butter. 50 g
116-648-4
reg. 10.00
6.99



Antifungal Spray for Athlete's Foot
Helps relieve itching and cracking. 100 ml
223-885-4
reg. 13.00
8.99



Arthritis Achy Foot & Muscle Cream
Provides warming pain relief. Contains glucosamine and chondroitin. 75 ml
117-059-3
reg. 10.00
6.99



Overnight Renewing Cream
Conditions while you sleep. With jojoba oil. 100 ml
116-647-7
reg. 13.00
8.99



Deodorizing Spray
Can also be used in footwear. 100 g
116-648-6
reg. 13.00
8.99



Deep Moisturizing Cream
24-hour moisturization. 75 ml
116-648-2
reg. 10.00
6.99



Intensive Moisture Foot Cream
Gentle, mild and suitable for sensitive skin. 75 ml
116-647-9
reg. 10.00
6.99



Keep feet
feeling
soft and
smooth



Softens hard calluses and significantly improves the look of dry, rough feet.

Intensive Callus Cream
Infused with natural aloe, rice bran oil and peppermint. In just 2 weeks, see a dramatic improvement. 100 ml
117-663-5
reg. 13.00

LIMITED TIME OFFER
5.99



Stainless steel
toenail clipper with
chevron design

**Chevron Grip
Toenail Clipper**
8 cm L. Stainless steel.
224-070-1
6.99
limited quantities



Soothe tense,
tired feet
and legs by
stimulating key
pressure points.
Massaging nubs
on the tips help
ease leg tension.

**Leg and Foot
Massager**
19 cm L x 8 cm W.
Polypropylene/
thermoplastic
rubber. **222-242-0**
7.99
limited quantities



Sugar-like
texture gently
exfoliates
calluses for
smooth, soft
feet

**Pink Sugar
Foot File**
Dual-sided foot
file. 19 cm L.
Man-made
materials.
223-953-9
5.49
limited quantities

step up your foot care routine



INCLUDES:

- Nail clippers
- Toenail clippers
- Nail file
- Nail scissors
- Cuticle pusher

**Foot Works
Pedicure Kit**
Metal/man-made
materials. Case, 9
x 12 cm **441-304**
reg. 16.00
10.99 the kit

INCLUDES:

- Fine grain file
- Metal file
- Brush
- Pumice

**Foot Works
Pedicure Tool**
Four features in one
tool. Plastic. 8 x 4 x
4 cm **102-612-1**
reg. 16.00
10.99



These balms are the bomb!

Lip Balm 4 g

Flavor Savers Lip Balm

Vanilla 221-971-9

Strawberry 221-971-7

Melon 221-971-8

Dew Kiss Lip Dew 221-971-2

Moisture Therapy Intensive Healing & Repair Lip Treatment 221-985-3

Daily Defense 222-571-5

Calming Relief 222-571-4

reg. 3.00

1.99 each

Véilment Care Lip Balm
 Infused with naturally moisturizing jojoba oil and shea butter oil to keep lips soft and supple all day. Delicately scented. 4 g
 Cherry 222-937-8
 Strawberry 222-937-9
 Aloe (with aloe extract) 223-132-2
 Coconut (with coconut oil) 223-132-1
 reg. 3.00
 1.99 each



TLC for your hands!

Skin So Soft Hand Cream

100 ml

Original 107-728-6

Radiant Moisture 107-728-7

Soft & Sensual 114-351-6

reg. 7.00

3.99 each

Moisture Therapy Hand Cream

125 ml

Daily Skin Defense 101-614-9

Calming Relief 101-614-8

Intensive Healing & Repair 101-615-3

reg. 9.00

3.99 each

Avon Care Silicone Glove Protective Hand Cream
 100 ml 288-210
 reg. 9.00
 3.99





Kills 99.9%
of bacteria in
15 seconds

germs
don't
stand a
chance!

**Senses Antibacterial
Hand Gel**

Mild and gentle
to skin. No water
needed. 75 ml

Cucumber & Melon

222-568-1

Vanilla

222-568-0

reg. 10.00

5.99 each



**Senses Silky
Vanilla Hand
Soap**

Comforting
vanilla and
brown sugar.
240 ml

113-538-7

reg. 14.00

8.39



**Senses Fresh
Cucumber &
Melon Hand
Soap**

Crisp cucumber
and juicy melon.
240 ml

113-538-8

reg. 14.00

8.39

shower power



gently cleanses
without drying

Senses Hydrating Shower Gel

150 ml

Vanilla **108-470-6**

Pomegranate & Mango **108-471-4**

Cherry Blossom **108-425-2**

Cucumber & Melon **108-427-5**

9.00 each or...

**ANY 3 FOR
10.00**

**MIX OR MATCH
PAGE 219**

To get the 3 FOR price, please
order in multiples of 3.

daily must-haves... pamper yourself!

HOT 
WINTER
Sale 

Plant-based
cleanser, derived
from **olive oil**
and infused with
coconut oil



Unveil silky-soft skin
**Vélment Care Moisturizing
Bar Soap**
Moisturizes as it gently
cleanses, leaving skin
beautifully soft and
delicately fragranced.
80 g **222-694-9**
3.50 each or...

2 FOR 4.00

To get the 2 FOR price, please order in multiples of 2.



Long-lasting
odour protection
& delicate, floral
scent

Fast-drying.
Anti-stain
formula.
**Perfumed Liquid
Deodorant**
Phthalate-free,
paraben-free, sulfate-
free, aluminum-free,
quick-drying formula.
Vegan. Easy fingertip
application. 59 ml
298-088
9.00 each or...

2 FOR 9.00

To get the 2 FOR price, please order in multiples of 2.

all-day freshness

Mesmerize **103-708-3**
 Wild Country **369-866**
 Black Suede **114-898-5**
 Haiku **107-042-4**
 Timeless **370-735**
 Imari **106-378-3**
 Sweet Honesty **370-736**
 Rare Gold **103-708-2**
 Night Magic **107-042-5**
 Odyssey **107-042-6**

Far Away **107-042-7**
 Rare Pearls **103-708-1**
 On Duty Original **380-342**
 On Duty Sport **380-309**
 On Duty Unscented **380-343**
 Feelin' Fresh Original **380-345**
 Cool Confidence Original **380-344**
 Cool Confidence Baby Powder **380-346**
 Skin So Soft Soft & Sensual **119-964-4**
 Tranquil Moments **107-425-6**



Non-whitening,
 quick drying and
 anti-staining
 anti-perspirants.

**Roll-On
 Anti-Perspirant
 Deodorant**
 24-hour wetness
 protection. 75 ml
5.00 each or...

**ANY 2
 FOR
 5.99**
**MIX OR MATCH
 PAGES 222-223**

To get the 2 FOR price, please
 order in multiples of 2.

meet the bod squad

targeted body care for real women

96% showed improvement in firmness and tone in the abdomen and hip area*

NakedProof Affirm Yourself Firming Body Cream

With caffeine complex. Stimulates natural collagen production to visibly firm skin. 200 ml
220-649-0
30.00 or...

98% saw improvement in just 4 weeks, reducing the look of cellulite*

NakedProof Smooth Moves Anti-Cellulite Cooling Gel

With L-carnitine and chai hu. Targets fat cells for visibly smoother skin and improved texture. 200 ml
220-649-1
30.00 or...

*In a 12-week clinical study.



HOT
WINTER
Sale

Dramatically reduces the appearance of stretch marks in just 2 weeks

NakedProof End Of The Line Stretch Mark Minimizing Lotion

With shea butter and pomegranate extract. Stimulates natural elastin production for visibly reduced stretch marks. 200 ml
220-649-2
30.00 or...

**ANY 2
FOR
25.00**

**MIX OR MATCH
PAGES 224-225**

To get the 2 FOR price, please order in multiples of 2.

refresh your senses with pampering essentials

FREE from parabens, mineral oil, silicone, phthalates and dyes.



Avon Senses Fresh Bergamot & Wild Mint
Seize the day with a fresh bouquet of dewy flowers mixed with spicy bergamot, clean wild mint and luminous solar musk.

Shower Gel
295 ml **221-935-4**
24.00

Body Mist
236 ml **221-935-2**
25.50

Body Lotion
236 ml **221-935-3**
24.00



Avon Senses Sparkling Grapefruit & Orange Blossom
Wake up your senses with a juicy mix of zesty grapefruit, bright orange blossom, delicate honeysuckle and luscious peach.

Shower Gel
295 ml **221-935-7**
24.00

Body Mist
236 ml **221-935-5**
25.50

Body Lotion
236 ml **221-935-6**
24.00



HOT WINTER Sale

Avon Senses Cozy Vanilla & Coconut
Envelop yourself in a cozy cloud of comforting vanilla, creamy coconut and calming chamomile.

Shower Gel
295 ml **221-936-0**
24.00

Body Mist
236 ml **221-935-8**
25.50

Body Lotion
236 ml **221-935-9**
24.00

ANY 2 FOR 30.00

MIX OR MATCH PAGES 226-227

To get the 2 FOR price, please order in multiples of 2.

hand-loving softness

Inspired by Italian tradition, Cucina is formulated with the **highest-quality natural ingredients**. Gentle on your hands as it is on the environment.



HOT ❄️
WINTER
Sale ❄️

Cucina Fruits & Passion Hand Soap 1 Litre Refill
1 litre

Sanguinelli Orange and Fennel

Delectable sanguinelli orange with fresh, green fennel. **222-745-2**

Lime Zest and Cypress
Enticing lime zest meets warm cypress. **222-744-6**

Coriander and Olive Tree
A delicate blend of coriander seeds and olive wood. **223-207-4**

Sea Salt and Amalfi Lemon
Sparkling notes of Amalfi lemon and soft sea salt. **223-207-5**

38.00 each or...

**ANY 2
FOR
55.00**

**MIX OR MATCH
PAGES 228-229**

To get the 2 FOR price, please order in multiples of 2.

luxurious body care

Bigger is better!

Our bonus-size formulas pamper skin with rich hydration.

1 LITRE SHOWER GELS



1 LITRE BODY LOTIONS



HOT ❄️
WINTER
Sale ❄️

Skin So Soft Bonus Size Shower Gel

Each, 1 litre

Radiant Moisture

220-840-0

Soft & Sensual 220-839-9

Original 220-839-8

21.00 each or...

Skin So Soft Bonus Size Body Lotion

Each, 1 litre

Supreme Nourishment

107-766-0

Radiant Moisture

107-765-8

Soft & Sensual 107-765-9

Original 107-765-7

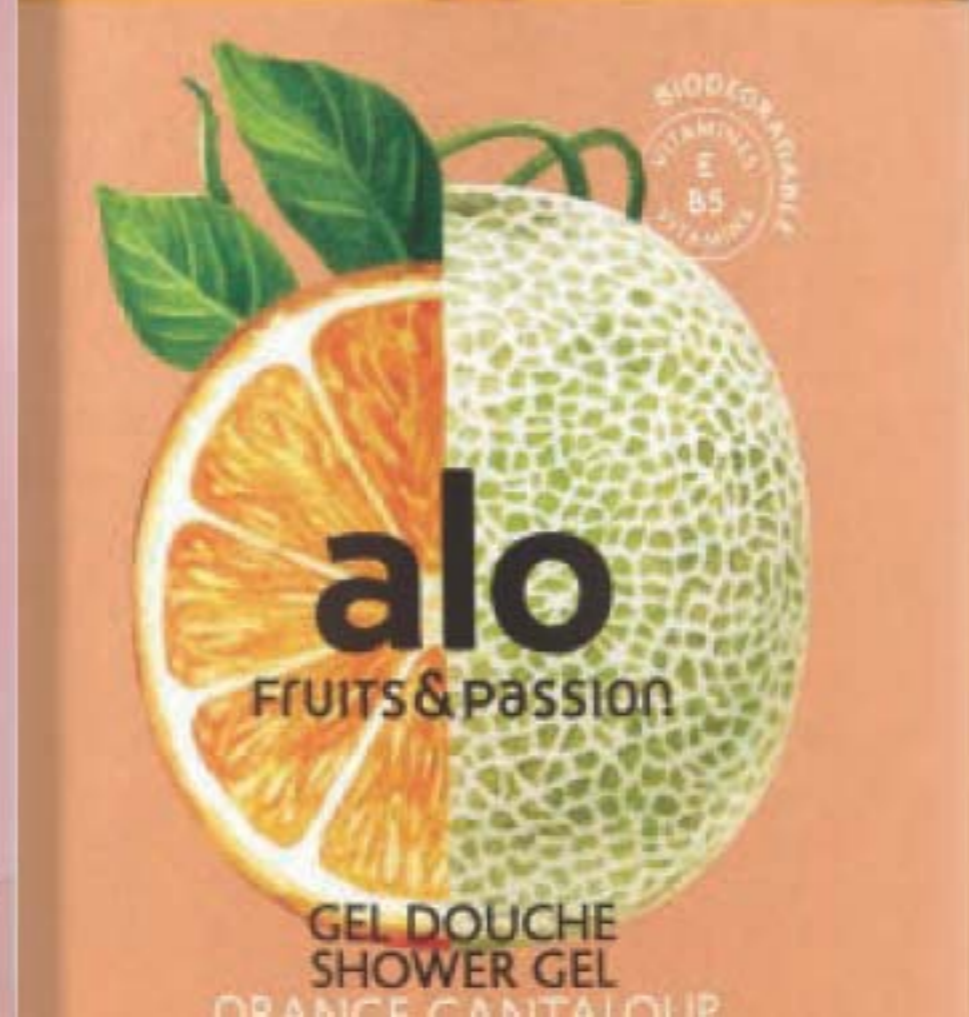
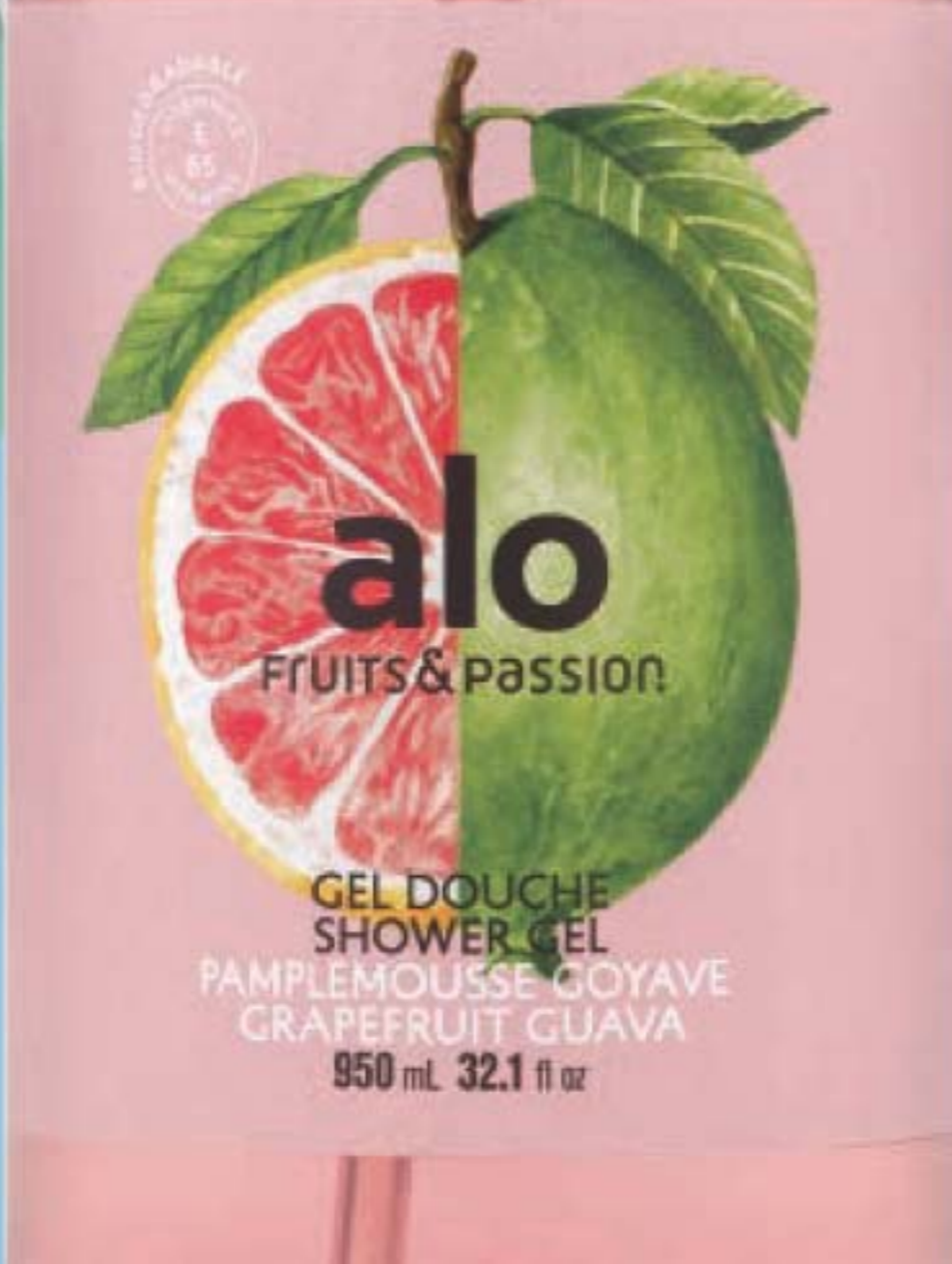
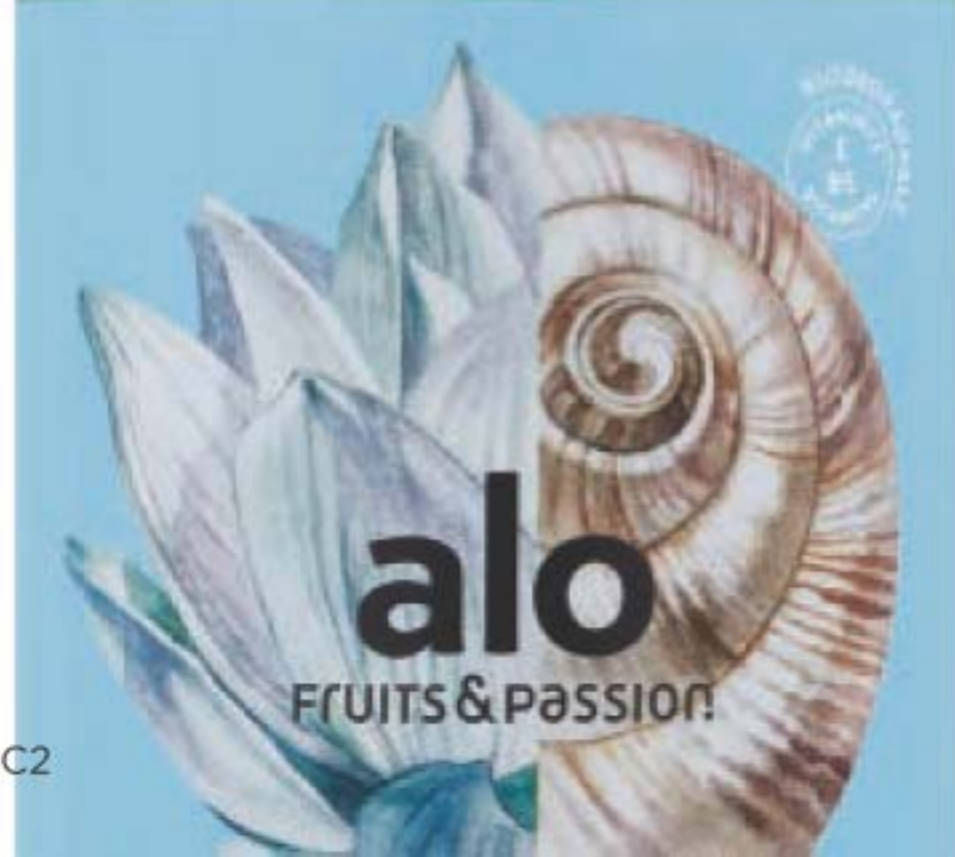
28.00 each or...

**ANY 2
FOR
28.00**

**MIX OR MATCH
PAGES 230-231**

To get the 2 FOR price, please order in multiples of 2.

shower up in tropical scents



HOT ❄️
WINTER
Sale ❄️

**Fruits & Passion Alo
Bonus Size Shower Gel**
Refreshing shower gel
enriched with vitamins
E and B5 leaves skin
feeling soft, smooth and
delightfully scented.
950 ml

Orange Cantaloupe

223-886-2

Grapefruit Guava

223-886-4

Ocean Flower **223-886-3**

VALUE: 49.00

19.99 each or...

**ANY 2
FOR
35.00**

**MIX OR MATCH
PAGES 232-233**

To get the 2 FOR price, please
order in multiples of 2.

Got stress? take a long bath!

HOT 
WINTER
Sale 

Senses Bubble Bath
Dermatologically-tested.
700 ml

Cherry Blossom **109-259-8**
Lily & Honeysuckle
Blossom **109-228-8**
Cucumber Melon
109-260-3
Soft Pink **109-260-2**
Orange & Honeysuckle
109-259-7
Sensitive Skin **109-282-4**
Lavender Garden **109-282-3**
Frosted Winterberry
109-259-6
Endless Ocean **109-260-1**
Vanilla Cream **109-259-5**

16.00 each or...

**ANY 2
FOR
16.00**

**MIX OR MATCH
PAGES 234-235**

To get the 2 FOR price, please
order in multiples of 2.

HOT
WINTER
Sale

gentle &
effective

moisturizes while
whisking away makeup

Avon True Color Moisturizing
Eye Makeup Remover Lotion

80 ml 109-574-9
reg. 12.00

LIMITED
TIME OFFER
3.99



Take it off...
gently!

BUY NOW! BROCHURE IS VALID FOR A LIMITED TIME. SEE BELOW.

Campaign 2, 2022

The advertised prices featured in this brochure (errors and omissions excluded) are Avon's retail prices for this current campaign and are applicable to online or Representative channel purchases only. [Your] Representative[s] set[s] their own selling price depending on the channel of purchase. All prices exclude applicable taxes. All prices and promotions (excluding delivery) featured in this brochure are valid for orders placed during this campaign only.



See our commitment at:
avongivesback.ca



Member of The Canadian
Direct Sellers Association

KINDLY SUBMIT YOUR ORDER BY: _____



@MyAvonCanada

1-800-265-2866
avon.ca

100% SATISFACTION GUARANTEED

If you are not happy with any purchase,
return the product through
the same channel of purchase.

If you purchased online, return the product
to Avon within 30 calendar days from the date
stated on your receipt for your money back.

**If you purchased from an Avon Independent
Sales Representative**, products must be
returned to your Representative along with
your receipt within 30 calendar days from the
delivery date stated for a replacement,
exchange or your money back.

Certain restrictions apply. Details of the Return
Policy can be found on your receipt or at avon.ca.

FSC (IND.) 4582081
FSC (10) 4582101