

AVON

CAMPAIGN 2



TRY A SERUM

see what your skin care's been missing

+ FREE GIFT details inside



why a serum?

A serum can **boost the benefits of anti-aging regimens.** It's lightweight, ideal for layering under day and night creams. Its more easily absorbed, smaller molecules deliver a **high concentration of active ingredients** to target specific concerns. Find one that's right for you.

Skin will look softer and smoother.

KEY INGREDIENTS: snow mushroom extract, panthenol (pro-vitamin B5), hyaluronic acid

NEW

Avon Solutions Nurtura Serum
With skin-nourishing ingredients known to help combat dryness and flakiness, and help hydrate. 30 ml **226-045-2** reg. \$23
\$17.99

Skin will appear plumper, firmer, with less noticeable fine lines.

KEY INGREDIENTS: vegan collagen, pomegranate extract, peptides, tocopherol (vitamin E)

NEW

Avon Solutions Dramatic Firming Serum
This moisturizing serum contains effective anti-aging ingredients that help promote a more youthful appearance. 30 ml **226-044-6** reg. \$23
\$17.99

You'll see an improvement in the look of dark spots and more even looking skin tone.

KEY INGREDIENTS: alpha arbutin, niacinamide (vitamin B3), licorice extract

NEW

Avon Solutions Banishing Serum
An intensive serum with ingredients known to help improve the appearance of dark spots and the look of uneven skin tone. 30 ml **226-045-0** reg. \$23
\$17.99

Avon Solutions Dramatic Firming Cream

Skin looks and feels smoother. For optimal results, pair it with Dramatic Firming Serum. 50 ml **226-059-9** reg. \$20
\$13.99

Avon Solutions Banishing Cream Skin Discoloration Improver

Helps improve the look of skin tone. For optimal results, pair it with Banishing Serum. 75 ml **917-47** reg. \$20
\$13.99

Avon Solutions Nurtura Replenishing Cream

Adds moisture to dry skin. For optimal results, pair it with Nurtura Serum. 50 ml **226-045-8** reg. \$20
\$13.99

free

WITH ANY \$30 SKIN CARE PURCHASE, PAGES 2-19 AND 68-73. **\$20 VALUE.** LIMITED QUANTITIES.




**Anew Vitamin C
Illuminating Priming Moisturizer**
With natural citrus extracts. Wear alone
or under makeup. 50 ml **226-056-0**
reg. \$48
\$26.99



**why
Power
Serum?**

It boosts the benefits
of your moisturizer.
You'll see a powerful
difference in the look
of texture, radiance,
firmness and wrinkles.

KEY INGREDIENTS:
algae extract blend,
peptides, hyaluronic
acid

**Anew
Power Serum**
Apply AM/PM after
cleansing, before
moisturizing.
30 ml **106-273-6**
reg. \$63
\$38.99



**Anew Vitamin C
Nourishing Body Butter**
Helps restore radiance. With vitamins C and E
to defend against free radical damage. With
hydrating shea butter and niacinamide. Uplifting
fruity-floral and citrus scent. 230 ml **225-903-7**
reg. \$45
\$24.99



**Anew Vitamin C
Antioxidant Lip Treatment**
Nourishes lips with vitamins C and E.
3.8 g **222-256-6**
reg. \$20
\$11.99



**why a
vitamin C serum?**

A daily dose of vitamin C helps
skin look brighter
and more energized!

KEY INGREDIENT:
10% pure vitamin C

**Anew Vitamin C
Brightening Serum**
30 ml **225-768-0**
reg. \$62
\$34.99



why serum ampoules?

These individual capsulated ampoules are designed to deliver an optimum dose of serum.

KEY INGREDIENTS:
a powerful blend of peptides

Isa Knox Anew Clinical Collagen Booster Rejuvenating Serum Ampoules
60 capsulated single-use ampoules.
0.22 ml each. 221-391-4
reg. \$88
\$69.99



Isa Knox Anew Clinical Line Eraser with Retinol Targeted Treatment
Deep lines look reduced and skin looks resurfaced. Use PM.
20 ml 226-061-1
reg. \$56
\$33.99



Isa Knox Anew Clinical Line Eraser with Retinol Treatment
Great for first-time retinol users.
Use AM/PM.
30 g 226-060-0
reg. \$63
\$39.99

why a retinol serum?

Retinol is the #1 wrinkle-fighter recommended by dermatologists.

KEY INGREDIENT:
1.0% retinol

Isa Knox Anew Clinical Line Eraser with Retinol [1.0%] Advanced Retinol Serum
Our highest dose of retinol. Dramatically reduces the appearance of fine lines, wrinkles and dark spots. 30 ml 223-424-8
reg. \$72
\$55.99



Isa Knox Anew Clinical Collagen Booster Microneedling Polisher
At-home alternative to microdermabrasion and microneedling procedures. Diminishes the look of pores, fine lines and wrinkles. 50 ml
221-459-9 reg. \$48
\$27.99



Isa Knox Anew Clinical Collagen Booster Firming Cream
With peptides, niacinamide and squalane to help firm the look of skin. Hygienic, airless pump. 50 ml
226-035-4
reg. \$65
\$39.99



Isa Knox Anew Clinical Collagen Booster Eye Lift Pro Dual Eye System
With a peptide complex. Eye area looks lifted and firmer. Gel, 10 ml; Cream, 10 ml
225-718-1
reg. \$56
\$33.99



Isa Knox Anew Clinical Revitalize & Reveal Advanced Wrinkle Corrector
Wrinkles appear reduced. 50 ml
226-060-2
reg. \$56
\$33.99

*In 6 out of 8 attributes tested over a 7-week period.



Isa Knox Anew Clinical Revitalize & Reveal Extra Strength Retexturizing Peel
Results similar to a 35% pro glycolic peel.* 30 fragrance-free pads, 5 cm diam. 226-067-3
reg. \$56
\$33.99



Isa Knox Anew Clinical Revitalize & Reveal Resurfacing Lotion for Body
Exfoliates with gentle yet effective AHA lactic acid. Moisturizes with shea butter. 150 ml 223-261-2
reg. \$48
\$27.99

A SUPERIOR SERUM
AND A LUXURIOUS BLEND
OF PRECIOUS OILS FOR
ONE SUPREME ELIXIR

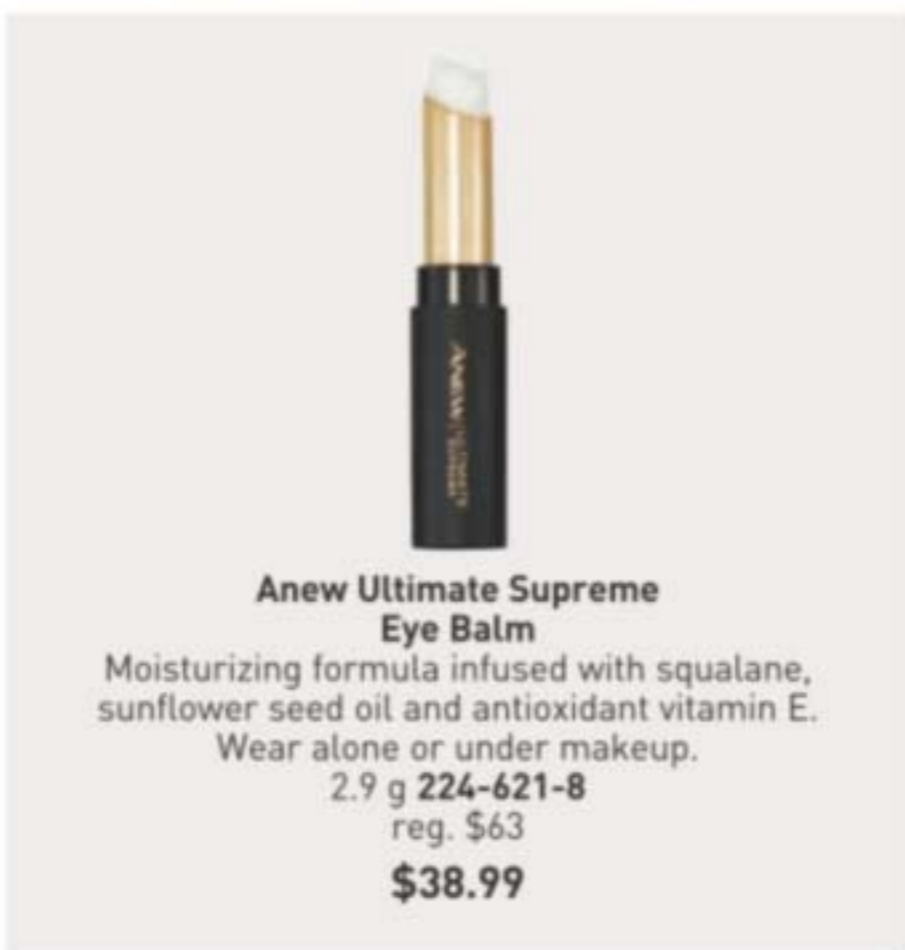
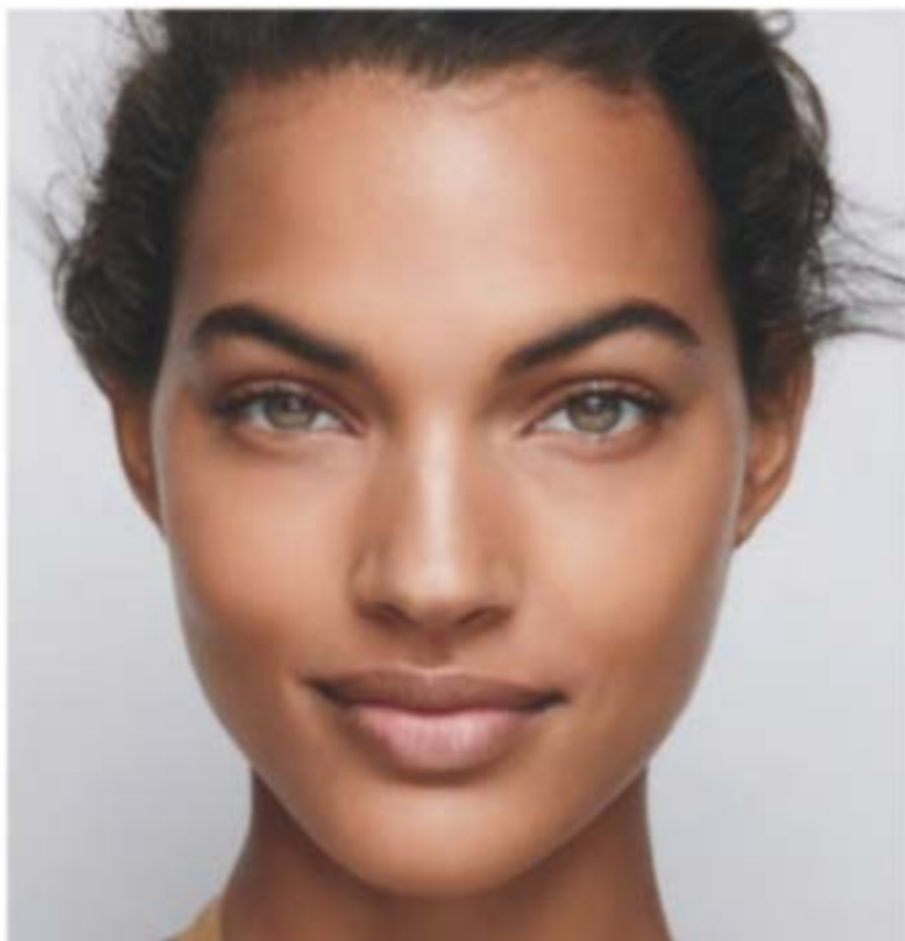


why a serum/oil combo?

It's 3X more powerful than a serum alone!
See a dramatic difference in the look of
even advanced signs of aging.

KEY INGREDIENTS:
black pearl extract, camellia & argan oils

Anew Ultimate Supreme Dual Elixir
Serum/Oil, 20 ml each. 222-400-7
reg. \$84
\$55



Anew Ultimate Supreme Eye Balm

Moisturizing formula infused with squalane,
sunflower seed oil and antioxidant vitamin E.
Wear alone or under makeup.
2.9 g 224-621-8
reg. \$63
\$38.99



**Anew Ultimate Supreme
Advanced Performance Crème**
With Black Pearl Extract. See a dramatic
difference in the look of deep wrinkles and skin
radiance. 50 g 226-055-8
reg. \$84
\$55



**Anew Ultimate
Multi-Performance Eye System**
Reduces the look of crow's feet and helps
de-puff the appearance of under-eye bags.
Cream, 15 g; Elixir, 2.5 g. 226-046-3
reg. \$59
\$36.99



**Anew Ultimate
Multi-Performance Night Cream**
It works while you sleep to revive
and recreate the look of youthful
skin. 50 g 226-044-8
reg. \$59
\$36.99



why a night serum?

It helps rejuvenate the look of skin while you
sleep, so you'll see the look of tone
and texture improve overnight and over time.

KEY INGREDIENTS:
peptides, licorice, hyaluronic acid, niacinamide

**Anew Ultimate
Night Repair Serum**
Use PM before moisturizer.
30 ml 224-621-9
reg. \$63
\$38.99

why a body serum?

Skin on your body can appear crepey, and this serum is formulated to help you see firmer, smoother looking body contours.

KEY INGREDIENTS:
niacinamide (vitamin B3),
panthenol (pro-vitamin B5),
peptides



Anew Platinum Sculpting Body Serum
Skin all over body looks more youthful.
200 ml
226-033-0
reg. \$63
\$38.99



Anew Platinum Night Cream
Skin appears smoother overnight and looks resculpted over time.
50 g 226-044-9
reg. \$59
\$36.99



Anew Platinum Firm and Sculpt Cream for Neck and Chest
With Peptide Lifting Complex, formulated for the skin on your neck and chest that's more vulnerable to wrinkles and sagging. Use PM after cleansing. 50 g 226-045-1
reg. \$59
\$36.99



Anew Platinum Eye & Lip Cream
Smooths the appearance of the area around the eyes and lips. Dual applicator. 15 g 226-046-5
reg. \$59
\$36.99

why Age Delay Serum?

It helps reduce the look of visible signs of aging with an innovative antioxidant technology formulated to enhance the look of elasticity for a firmer appearance.

KEY INGREDIENTS:
niacinamide (vitamin B3), panthenol (pro-vitamin B5), peptides

Anew Platinum Age Delay Serum
Use AM and PM before moisturizer.
30 ml 224-622-0
reg. \$63
\$38.99



why a rejuvenating serum?

This luxurious serum is formulated to improve the look of elasticity, radiance and skin texture for a more youthful appearance.

KEY INGREDIENTS:
paeonol (peony extract) and ceramides

Isa Knox LXNEW Ultimate Rejuvenating Serum
40 ml 224-488-7
reg. \$80
\$64



Isa Knox LXNEW Ultimate Rejuvenating Eye Serum
Infused with paeonol and niacinamide to help reduce the look of fine lines around the eye area and de-puff the look of under-eye bags. 30 ml 224-488-8
reg. \$70
\$56



Isa Knox LXNEW Ultimate Rejuvenating Day Cream
With paeonol, reduces the appearance of wrinkles and improves the look of elasticity, radiance and skin texture. With nutmeg to help even the look of skin tone. 50 ml 224-488-6
reg. \$70
\$56



Isa Knox LXNEW Ultimate Rejuvenating Dual Night Cream
With paeonol and macadamia oil. Volume Cream, 25 ml: rice bran extract helps plump the look of skin. Firming Cream, 25 ml: helps skin look firmer. 224-488-5
reg. \$70
\$56

why a sculpting serum?

This formula contains encapsulated violet droplets that help to deliver rejuvenating ingredients so skin contours look lifted.

KEY INGREDIENTS:
hibiscus extract, peptides and antioxidants

Isa Knox LXNEW Platinum Sculpting Oil Serum
40 ml 223-197-7
reg. \$80
\$64



Isa Knox LXNEW Platinum Sculpting Day Cream
Infused with moisturizing hibiscus extract and smoothing ceramide. Helps tighten the look of facial contours. 50 ml 223-197-6
reg. \$70
\$56

Isa Knox LXNEW Platinum Sculpting Eye Cream
With hibiscus extract, panthenol and antioxidants. Leaves the delicate eye area looking firmer, brighter and more defined. 25 ml 223-197-8
reg. \$70
\$56

Isa Knox LXNEW Platinum Sculpting Night Cream
With firming hibiscus extract, ceramide, squalane and shea butter. Skin looks firmer, smoother and more defined. 50 ml 223-197-5
reg. \$70
\$56

Anew Hydra Fusion De-Puffing Eye Serum
Eyes look and feel refreshed. With caffeine and hyaluronic acid. Cooling ceramic tip. Instantly boosts hydration around eye area by 3X. 15 ml **226-060-3** reg. \$48
\$26.99



why a
hyaluronic
acid serum?



Hyaluronic acid can hold up to 1 000 times its weight in water for immediate and lasting hydration to help skin appear plumper.

KEY INGREDIENT:
1.5% hyaluronic acid

**Anew Hydra Fusion
1.5% Hyaluronic Acid Serum**
With three different molecular sizes of HA that reach multiple layers of skin's surface to help plump the look of skin. 30 ml **226-083-8** reg. \$62
\$44



**Rice Water Bright Rice Bran
Gentle Exfoliating Cleanser**
Daily scrub with organic rice bran powder, rice bran oil and hydrated silica. 300 ml
223-093-3
reg. \$23
\$19



Rice Water Bright Foaming Cleanser
Light whipped foam leaves skin feeling cleansed and refreshed. With rice water and soapwort extract. Skin looks clear and bright. 300 ml **221-900-0**
reg. \$19
\$16



**Isa Knox LXNEW Clean
Nourishing Cream Cleanser**
With panthenol (vitamin B5), rosemary and soapwort extracts. Removes impurities and makeup while restoring moisture. 150 ml
222-986-2 reg. \$18
\$14.99



**Rice Water Bright
Cleansing Facial Wipes**
Great on the go. With rice extract to moisturize while cleansing. Removes eye makeup. 50 wipes. **221-900-8**
reg. \$16
\$13



belif
**The True Cream
Moisturizing Bomb**
For dryness, loss of elasticity and firmness. 26 hours of long-lasting moisture.* Full size, 50 ml **225-386-5**
\$51.50



belif
**The True Cream
Aqua Bomb**
For dryness, dullness and uneven texture. 70% increase in hydration levels.* Full size, 50 ml **222-722-7**
\$51.50



Farm Rx Bakuchiol Cream
Moisturizing cream with bakuchiol, a plant-based alternative to retinol that you can use during the day. Reduces the look of wrinkles. Vegan. Hypoallergenic. Suitable for sensitive skin. 90 ml
224-113-1
reg. \$63
\$45.99



Farm Rx Super Greens Cooling Gel
Lightweight moisturizer helps skin feel cool. Apply a thicker layer, after serum, as a mask to hydrate overnight as needed.
90 ml 223-642-5
reg. \$53
\$39.99



Farm Rx Super Greens Refreshing Eye Cream
With nourishing Super Greens formula, plus cucumber extract. Hydrates and green tea helps reduce the look of puffiness. 30 ml
225-599-0 reg. \$44
\$32.99



Farm Rx Bakuchiol Serum
Concentrated lightweight oil-textured formula penetrates skin's surface to reduce the look of fine lines, wrinkles and dullness without irritation.
30 ml 223-643-7 reg. \$63
\$45.99



Farm Rx Bakuchiol Eye Cream
Reduces the look of dark circles, fine lines and wrinkles without irritating the delicate eye area. 30 ml 223-643-8
reg. \$53
\$39.99



Farm Rx Super Greens Multivitamin Moisture Cream
Locks in essential nourishing moisture. Use daily after cleansing, serums and treatments.
90 ml 223-642-6
reg. \$53
\$39.99



Farm Rx Super Greens Refreshing Gel Cleanser
With aloe. Convenient pump. Eco-friendly packaging and glass bottle. Use AM/PM. 240 ml 224-108-4
reg. \$35
\$24.99

CLEANSE & MOISTURIZE SET

Anew Ultimate Multi-Performance Eye System
 Cream, 15 g
 Elixir, 2.5 g

Anew Ultimate Multi-Performance Night Cream
 50 g

Rice Water Bright Rice Bran Gentle Exfoliating Cleanser
 300 ml

3-PIECE SET
\$64.99
\$141 VALUE



CLEANSE, POLISH, FIRM SET

Rice Water Bright Foaming Cleanser
 300 ml

Isa Knox Anew Clinical Collagen Booster Microneedling Polisher
 50 ml

Isa Knox Anew Clinical Collagen Booster Firming Cream
 50 ml

3-PIECE SET
\$57.99
\$132 VALUE



REGIMEN ENHANCEMENT SET

Anew Platinum Eye & Lip Cream
 Dual applicator. 15 g

Anew Platinum Age Delay Serum
 30 ml

Anew Hydra Fusion Cleansing Micellar Water
 300 ml

3-PIECE SET
\$61.99
\$142 VALUE

To order items on this page, please go to avon.ca.



HYDRA FUSION SET

Anew Hydra Fusion De-Puffing Eye Serum
 15 ml

Anew Hydra Fusion 1.5% Hyaluronic Acid Serum
 30 ml

Anew Hydra Fusion Gel Cream
 50 g

3-PIECE SET
\$67.99
\$158 VALUE

To order items on this page, please go to avon.ca.





free

fmg Glimmer SuperExtend Nourishing Mascara in Black with any \$20 makeup purchase, pages 21-29, 80-87. \$19 value.

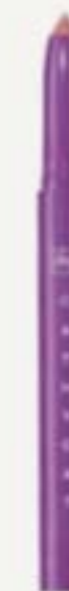
Sold separately on page 23. Limited quantities.

Enjoy special prices and offers with an Avon account or Representative.



fmg Cashmere Eyeshadow Palette
Long-wearing formula with crease-resistant wear. Satin, matte and sparkling finishes. Free from parabens, talc and fragrance. 18 g reg. \$58

\$48



fmg CathyCat Shadow Gaze Matte Color Stick
Long-wearing formula will not budge or smudge. Buildable and blendable coverage. Matte finish. Free from parabens and fragrance. 1.35 g reg. \$27

\$20.99



fmg Glimmer Eyeshadow Quad
Soft powder formula lasts all day. No messy fallout. Buildable coverage. Available in Multi or All Matte finishes. Free from parabens and fragrance. 6 g reg. \$22

\$16.99





**bold brows
and
lush lashes**



**fmg Colors of LOVE
Hi-Brow Tinted Brow Gel**
24-hour water-resistant formula with heart-shaped fibres, clay and vitamin E. Won't clump, smudge or flake. Matte finish. Free from parabens, phthalates and fragrance. 3.7 ml
reg. \$26

\$19.99



**fmg Colors of LOVE
Hi-Brow Sculpting Brow Gel**
Clear formula with aloe and hyaluronic acid. Flake-proof. Matte finish. Free from parabens, phthalates and fragrance. 3.3 ml 224-555-6
reg. \$26

\$19.99



**fmg LOVE at 1st Lash
Mascara**
Lash-loving volumizing and lengthening fibres. With lycopene, olive oil and vitamin E. Won't clump, smudge or flake. Free from parabens and sulfates. 9 ml
Blackest Black 225-679-9
reg. \$26

\$19.99



**fmg Cashmere
Under Eye Primer**
Helps diminish the look of dark circles and fine lines. With caffeine, green tea extract and vegan collagen. Free from parabens, phthalates and fragrance. 9 g 224-948-4
reg. \$35

\$26.99



**fmg Cashmere Ultimate
Volume Mascara**
Long-wearing formula with biotin and collagen. Glossy black finish. Won't budge, smudge or transfer. Free from parabens, sulfates and talc. 8 ml **Rich Black 224-700-0**
reg. \$33

\$25.99



**fmg Glimmer SuperShock
Volumizing Mascara**
Lash-building formula with plumping fibres. High-gloss finish. Won't clump, smudge or flake. Free from phthalates and fragrance. 10 ml
Black 225-983-8
reg. \$19

\$14.99



**fmg Glimmer SuperExtend
Nourishing Mascara**
Long-wearing lengthening formula with vitamin E, argan and coconut oils. Won't clump, smudge or flake. Free from sulfates and talc. 7 ml
Black 225-983-9
Brown Black 225-984-0
reg. \$19

\$14.99



**LOVE at 1st Lash
Waterproof Mascara**
Lash-loving waterproof formula with volumizing and lengthening fibres. With Lashrez, olive oil and vitamin E. Won't clump, smudge or flake. Free from parabens and sulfates. 8.5 ml
Blackest Black 222-014-9
reg. \$26

\$19.99



**fmg Glimmer Wash-Off
Waterproof Mascara**
Waterproof volume. Washes off easily with soap and water. Free from phthalates and fragrance. 6 g
Black 225-983-2
reg. \$17

\$12.99



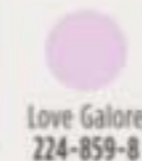
fmg Glimmer Cream Eyeliner
Long-wearing formula with soft sheen finish. Retractable. Free from parabens, sulfates and talc. 0.28 g reg. \$13
\$5.99



fmg Glimmer Lipliner
Long-wearing creamy formula with vitamin E. Prevents feathering. Matte finish. Retractable. Free from parabens, sulfates and talc. 0.28 g reg. \$13
\$5.99



TPSY Shiny Lip Oil
Glossy formula with jojoba, argan and castor oils. Free from parabens, sulfates, phthalates and talc. 3.7 g reg. \$24
\$18.99



fmg LOVE Lip Butter
Sheer, high-shine formula with cupuaçu seed butter, mango extract and apricot kernel and olive fruit oils. Buildable coverage. Free from parabens, sulfates and phthalates. 2.7 g reg. \$26
\$19.99



fmg Glimmer Diamond Eyeliner
Long-wearing formula with subtle sparkle. Retractable. Free from parabens, sulfates and talc. 0.28 g reg. \$13
\$5.99



fmg Glimmer Waterproof Eyeliner
Long-wearing, smudge- and waterproof formula. Retractable. Free from parabens, sulfates and talc. 0.28 g reg. \$13
\$5.99



TPSY Forever Lip Marker
Vibrant long-wear formula with castor and sunflower oils. Matte finish. Free from parabens, sulfates and phthalates. 2.5 ml reg. \$24
\$18.99



fmg Glimmer Birthday Balm Lip Crayon
Sheer, soft shine formula with non-GMO shea butter. Free from parabens and gluten. 2.7 g reg. \$21
\$15.99



fmg Glimmer Brow Definer
Long-wearing formula with castor and coconut oils. Smudge-, transfer-, sweat- and waterproof. Retractable. Free from parabens, sulfates and talc. 0.28 g reg. \$13
\$5.99



fmg Glimmer Liquid Eyeliner
Quick-drying long-lasting formula. Transfer-, sweat- and waterproof. Matte finish. Free from parabens, phthalates and fragrance. 1.1 ml
Blackest Black (223-883-9) reg. \$18
\$14.99



fmg Glimmer Always On Point Eyeliner
Built-in sharpener. Smudge- and waterproof. Free from parabens, sulfates and talc. 0.31 g reg. \$15
\$11.99



fmg Glimmer Satin Lipstick
Lightweight creamy formula with pomegranate extract. Buildable coverage. Satin finish. Free from parabens and sulfates. 3 g reg. \$17
\$12.99





pops of colour



fmg Glimmer Nail Lacquer

Nail-strengthening, long-wearing, no-chip formula. Gel-like cushion texture. Free from parabens and phthalates. 12 ml reg. \$17

\$12.99

- | | | | | |
|---|---|--|---|---|
|  |  |  |  |  |
| SATIN
Lost Galaxy Plum
226-249-7 | SATIN
Black Hole Burgundy
226-250-0 | SATIN
Supernova Red
226-249-9 | SATIN
Night Sky Berry
226-249-8 | SATIN
High Magnitude Mauve
226-250-4 |
|  |  |  |  |  |
| SATIN
Lunar Tan
226-250-1 | SATIN
Cool Comet
226-250-2 | SATIN
Full Moon Flush
226-250-3 | METALLIC
Meteorite Rose
226-250-6 | METALLIC
Golden Galaxy
226-250-5 |



fmg Glimmer Lip & Cheek Stain

Highly pigmented long-wearing gel formula. Brush tip applicator. Transfer-proof. Free from parabens and fragrance. 5.5 ml reg. \$24

\$18.99

- | | |
|---|---|
|  |  |
| Plumeria
224-975-0 | Rosette
224-974-9 |



fmg Glimmer Powder Illuminator

Lightweight buildable formula with vitamin E. Radiant finish. Free from parabens, phthalates and fragrance. 10 g reg. \$20

\$15.99

- | | |
|---|---|
|  |  |
| Rosé
225-930-2 | Prosecco
225-930-1 |



fmg Glimmer Be Blushed Cheek Color

Creamy formula with vitamin E. Buildable coverage. Dewy finish. Free from parabens, phthalates and fragrance. 4 g reg. \$21

\$15.99

- | | | | | |
|---|---|---|---|---|
|  |  |  |  |  |
| Icy Petal
225-062-5 | Blushing Nude
225-062-7 | Golden Rose
225-062-3 | Tropical Peach
225-063-8 | Crushed Berry
225-063-6 |



fmg Glimmer Powder Blush

Weightless formula with ultrafine pearl and vitamin E. Buildable coverage. Matte finish. Free from parabens, phthalates and fragrance. 8 g reg. \$20

\$15.99

- | | |
|---|---|
|  |  |
| Petal Pink
224-958-7 | Pink Passion
224-958-8 |



fmg Glimmer Nail Base and Top Coat

2-in-1 base and top coat primes and shields nails. Glossy finish. Free from parabens and phthalates. 12 ml 226-251-0 reg. \$17

\$12.99



fmg Glimmer Nail Lacquer Eraser Pen

For a clean and perfected mani. Won't dry out nails or cuticles. Free from parabens and phthalates. 4 ml 224-101-7 reg. \$17

\$12.99



fmg Match Filter Serum Tint Foundation
Instantly hydrates, blurs and evens tone. With hyaluronic acid, vitamin E and berry complex. Buildable coverage. Demi-matte finish. Free from talc, parabens and fragrance. 9 g reg. \$30
\$22.99



fmg Match Tint Radiant Tinted Moisturizer
Brightens skin tone, boosts moisture and blurs flaws. With passion fruit, chia and sunflower seed oils, and vitamins E and B5. Buildable coverage. Radiant finish. Free from parabens. 30 ml reg. \$20
\$15.99



fmg Match Wand Correcting Stick
Neutralizes unevenness, brightens and colour corrects. Long-wearing formula with shea butter and vitamin E. Free from parabens, phthalates and sulfates. 6 g reg. \$26
\$19.99



fmg GLOKOLOR Lip Serum Pencil
Refreshes and smooths lips. With peppermint and argan oils. Free from parabens and fragrance. 1.8 g 225-634-9 reg. \$29
\$23



fmg Match Set Finishing Powder
Controls shine, blurs the look of pores and fine lines, and sets makeup. Mineral-infused formula. Matte finish. Free from talc, parabens and fragrance. 6.5 g 224-487-0 reg. \$27
\$20.99



fmg GLOKOLOR Hybrid Face Mist
Instant boost of moisture to refresh skin. With aloe vera, agave and algae extracts. Free from parabens and sulfates. 80 ml 225-725-5 reg. \$35
\$29



fmg Match Prime Face Perfector
Flaw-blurring mattifying oil-free formula minimizes the look of pores and fine lines. Sheer coverage. Matte finish. Free from parabens. 30 ml 226-480-1 reg. \$24
\$18.99



fmg GLOKOLOR Hybrid Face Primer
Softens the appearance of imperfections. With aloe vera, agave and algae extracts. Free from parabens and sulfates. 30 ml 225-725-6 reg. \$35
\$29



power
couple

ONE FOR HER, ONE FOR HIM.
STOCK UP ON BOTH!

FAR AWAY + MESMERIZE BLACK SET

amber floral

**Far Away
Eau de Parfum**
Freesia, jasmine
and amber. 50 ml

woody fougère

**Mesmerize Black
Eau de Toilette**
Pepper, nutmeg and
tonka bean. 100 ml

2-PIECE SET

\$34.99

\$70 VALUE



To order items on this
page, please go to avon.ca.

IMARI + BLACK SUEDE SET

amber floral

Imari Eau de Toilette
Bergamot, jasmine
and amber. 50 ml

fresh aromatic

Black Suede Eau de Toilette
Bergamot, leather and
oakmoss. 100 ml

2-PIECE SET

\$30.99

\$67 VALUE



FAR AWAY BALI + MESMERIZE SET

fruity floral

**Far Away Bali
Eau de Parfum**
Grapefruit, salted tuberose
and amber. 50 ml

fresh aromatic

Mesmerize Cologne
Bergamot, cardamom
and amber. 100 ml

2-PIECE SET

\$34.99

\$70 VALUE



HAIKU KYOTO FLOWER + PERCEIVE SET

fresh green floral

**Haiku Kyoto Flower
Eau de Parfum**
Violet leaf, white peony
and cotton musk. 50 ml

fresh aromatic

Perceive Cologne
Citrus, sage and
cedarwood. 100 ml

2-PIECE SET

\$34.99

\$70 VALUE



To order items on this page,
please go to avon.ca.



return to Bali

fruity floral
Far Away Bali
 Eau de Parfum
 Grapefruit, salted
 tuberose and amber.
 50 ml 223-059-2
 reg. \$35
\$24.99

fresh green floral
Haiku
 Eau de Parfum
 Yuzu, muguet and
 blonde woods.
 50 ml 220-269-8
 reg. \$35
\$24.99

fresh green floral
Haiku Kyoto Flower
 Eau de Parfum
 Violet leaf, white peony
 and cotton musk.
 50 ml 435-140
 reg. \$35
\$24.99

fresh green floral
Haiku Reflection
 Eau de Parfum
 Water accord, acacia blossom
 and amber wood.
 50 ml 115-861-8
 reg. \$35
\$24.99

exotic florals

fruity floral
Far Away Infinity
 Eau de Parfum
 Bergamot, jasmine sambac
 and sandalwood.
 50 ml 223-197-4

amber floral
Far Away
 Eau de Parfum
 Freesia, jasmine
 and amber.
 50 ml 223-198-3

amber floral
Far Away Gold
 Eau de Parfum
 Ylang-ylang, jasmine
 and vanilla.
 50 ml 223-197-1
 reg. \$35
\$24.99 each



fruity floral

Rare Amethyst Eau de Parfum
Plum, violet and sandalwood.
50 ml 102-456-8
reg. \$35
\$24.99

shimmer with glamour



amber floral

Imari Eau de Toilette
Bergamot, jasmine and amber.
50 ml 222-370-1
reg. \$35
\$24.99



soft floral

Rare Pearls Eau de Parfum
Magnolia, white pepper and rosewood. 50 ml 223-987-9
reg. \$35
\$24.99



amber floral

Imari Seduction Eau de Toilette
Wild berries, purple orchid and patchouli.
50 ml 220-270-2
reg. \$35
\$24.99



amber floral

Rare Gold Eau de Parfum
Mandarin zest, ylang-ylang and amber.
50 ml 102-456-9
reg. \$35
\$24.99



woody floral

Imari Amor Eau de Parfum
Black currant, orris and musk.
50 ml 224-353-2
reg. \$35
\$24.99



amber floral
Candid
 Avon Classics
 Collection Eau de
 Cologne Spray
 Bergamot, tuberose
 and patchouli.
 50 ml 110-321-3
 reg. \$26
\$15.99



soft floral
Dreamlife
 Avon Classics
 Collection Eau de
 Cologne Spray
 Mimosa flower,
 rose and amber.
 50 ml 224-615-4
 reg. \$26
\$15.99



woody floral
Night Magic
 Avon Classics
 Collection Eau de
 Cologne Spray
 Neroli, jasmine
 and musk.
 50 ml 110-300-9
 reg. \$26
\$15.99



soft floral
Odyssey
 Avon Classics
 Collection Eau de
 Cologne Spray
 Tuberose, ylang-
 ylang and oak
 moss. 50 ml
 110-321-2
 reg. \$26
\$15.99



soft floral
Sweet Honesty
 Avon Classics
 Collection Eau de
 Cologne Spray
 Lily of the valley,
 rose and cedarwood.
 50 ml 110-437-8
 reg. \$26
\$15.99



soft floral
Timeless
 Avon Classics
 Collection Eau de
 Cologne Spray
 Cardamom, jasmine
 and patchouli.
 50 ml 110-373-1
 reg. \$26
\$15.99



soft floral
Topaze
 Avon Classics
 Collection Eau de
 Cologne Spray
 Jasmine, rose and
 sheer musk.
 50 ml 223-321-3
 reg. \$26
\$15.99



fresh green floral
Free o2
 Eau de Toilette Spray
 White peach tea,
 honeysuckle and musk.
 50 ml 222-618-9
 reg. \$26
\$15.99



scented softness

**Perfumed
Skin Softener**
 Moisturizing formula leaves
 skin soft and scented.
 150 ml
 reg. \$12
\$6.99 each



Candid 222-623-3



Night Magic Evening Musk 222-623-2



Odyssey 222-623-4



Sweet Honesty 222-623-0



Timeless 222-623-1



Far Away 222-702-0



Haiku 222-702-2



Imari 222-701-8



fresh aromatic

Black Suede Eau de Toilette
Bergamot, leather and oak moss. 100 ml
223-988-3 reg. \$32
\$19.99



fresh aromatic

Wild Country Cologne
Lavender, coriander seed and sandalwood. 88 ml
836-47 reg. \$32
\$19.99



fresh aromatic

Perceive Cologne
Citrus, sage and cedarwood. 100 ml
831-73 reg. \$35
\$24.99



Black Suede Aftershave Conditioner
100 ml 226-245-6
reg. \$12
\$5.99



fresh aromatic

Wild Country Aftershave Splash
118 ml 222-574-4
reg. \$19
\$14.99



fresh aromatic

Avon Exploration Eau de Toilette
Orange, rosemary and sandalwood. 75 ml
122-508-2 reg. \$35
\$24.99



Black Suede Hair and Body Wash
150 ml 222-701-7
reg. \$12
\$5.99



Wild Country Hair and Body Wash
150 ml 225-959-3
reg. \$12
\$5.99



fresh aromatic

Mesmerize Cologne
Bergamot, cardamom and amber. 100 ml
222-370-2 reg. \$35
\$24.99

always
captivating



woody fougère

Mesmerize Black Eau de Toilette
Pepper, nutmeg and tonka bean.
100 ml 108-628-3
reg. \$35
\$24.99

TIMELESS SET

soft floral

Eau de Cologne Spray
Cardamom, jasmine
and patchouli. 50 ml

Hand Cream
75 ml

Perfumed Skin Softener
150 ml

3-PIECE SET

\$19.99

\$47 VALUE



RARE PEARLS SET

soft floral

Eau de Parfum
Magnolia, white pepper
and rosewood. 50 ml

Body Lotion
200 ml

Hand Cream
75 ml

3-PIECE SET

\$31.99

\$62 VALUE



NIGHT MAGIC SET

woody floral

Eau de Cologne Spray
Neroli, jasmine and musk.
50 ml

Hand Cream
75 ml

Perfumed Skin Softener
150 ml

3-PIECE SET

\$19.99

\$47 VALUE

To order items on this page,
please go to avon.ca.



FAR AWAY SET

amber floral

Eau de Parfum
Freesia, jasmine
and amber. 50 ml

Body Lotion
200 ml

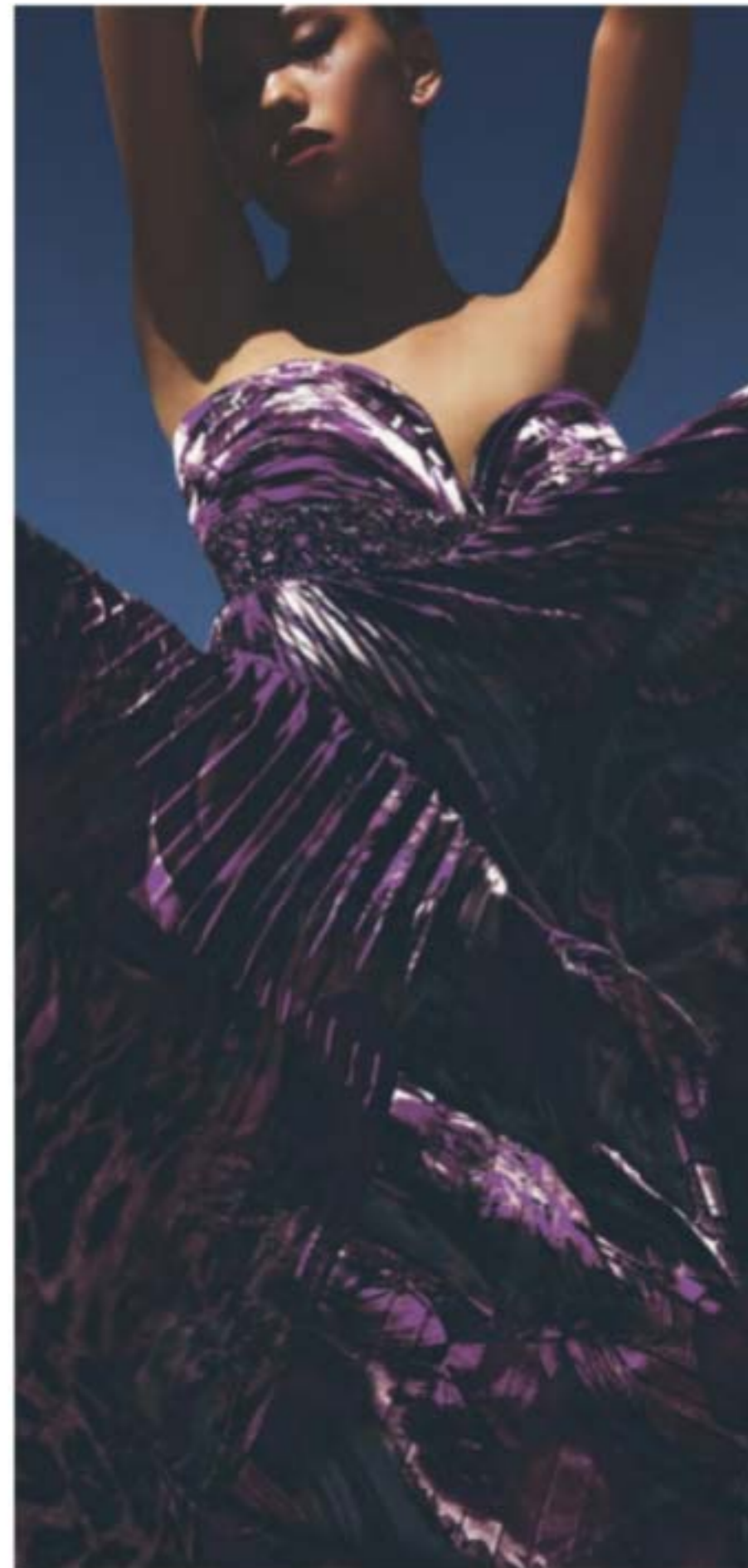
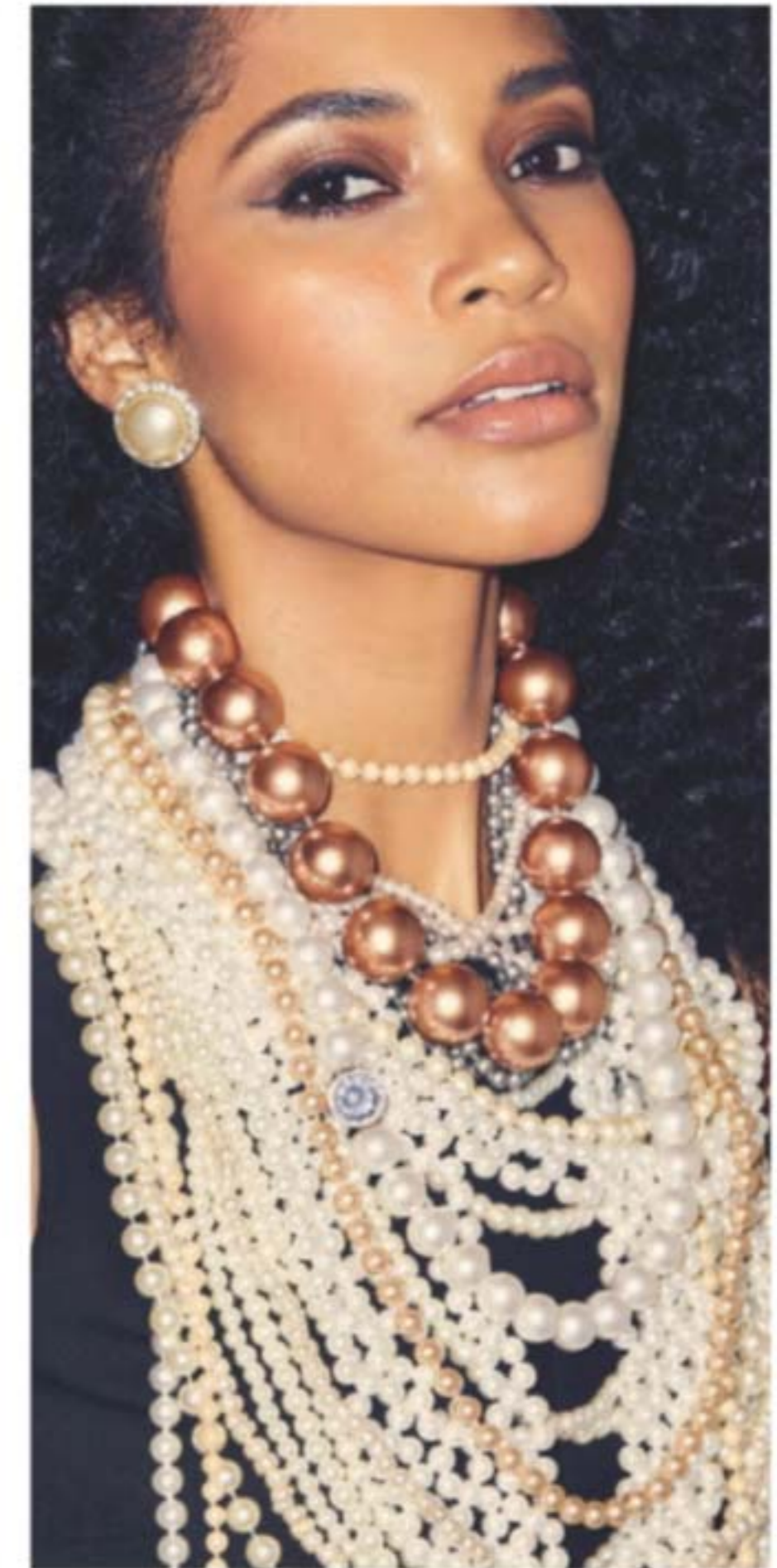
Body Scrub & Wash
200 ml

3-PIECE SET

\$36.99

\$69 VALUE

To order items on this page,
please go to avon.ca.



soft skin is always in

INDULGE IN A PAMPERING RITUAL FOR THE FEEL OF IRRESISTIBLY SOFT SKIN. SKIN SO SOFT SIGNATURE OILS, DESIGNED TO ACT LIKE SKIN'S NATURAL OILS, HELP KEEP SKIN HYDRATED BEFORE, DURING AND AFTER A BATH OR SHOWER.



free

SKIN SO SOFT
ORIGINAL SHOWER GEL 150 ml
AND ORIGINAL HAND CREAM 100 ml
WITH ANY \$25 PURCHASE,
PAGES 44-55 AND 88-99
\$19 VALUE!
LIMITED QUANTITIES

Original Bath Oil
Hydrates during
or after bath
or shower.
500 ml
225-567-3
reg. \$34
\$21.99



Original Gelled Body Oil
Dries to a
silky finish.
200 ml
225-599-3
reg. \$19
\$10.99



Soft & Sensual Body Lotion
350 ml
107-757-5
reg. \$16
\$9.99



Bonus-Size Soft & Sensual Bath Oil
Hydrates during or
after bath
or shower.
739 ml
225-567-4
reg. \$42
\$26.99



Original Body Lotion
48-hour
moisture.
350 ml
226-457-0
reg. \$16
\$9.99



Original Bath Oil Spray
Locks in
hydration.
150 ml
225-674-4
reg. \$20
\$11.99
Pump sold
separately.



Sold
separately:
**Original Bath Oil
Spray Pump**
226-602-6
\$3.99



Soft & Sensual Bath Oil
Hydrates
during or
after bath
or shower.
500 ml
225-566-0
reg. \$34
\$21.99



Soft & Sensual Gelled Body Oil
Dries to a
silky finish.
200 ml
226-454-2
reg. \$19
\$10.99



Bonus-Size Original Bath Oil
Hydrates during or
after
bath or
shower.
739 ml
225-567-2
reg. \$42
\$26.99



Bonus-Size Original Shower Gel
Gently
cleanses
and hydrates.
1 litre
225-969-4
reg. \$25
\$19.99



Bonus-Size Original Body Lotion
48-hour
moisture.
1 litre
226-504-9
reg. \$28
\$19.99
Pump sold
separately
(page 45).



Sold
separately:
**Bonus-Size Skin So
Soft and
Moisture
Therapy
Body Lotion
Pump**
226-602-2
\$3.99



Bonus-Size Soft & Sensual Body Lotion
48-hour
moisture.
1 litre
226-505-5
reg. \$28
\$19.99
Pump sold
separately.



Bonus-Size Soft & Sensual Shower Gel
Gently
cleanses
and
hydrates.
1 litre
225-969-7
reg. \$25
\$19.99



Bonus-Size Radiant Moisture Shower Gel
Gently cleanses and hydrates. 1 litre
225-969-9
reg. \$25
\$19.99

Bonus-Size Radiant Moisture Bath Oil
Keeps skin hydrated after bath or shower. 739 ml
225-599-4
reg. \$42
\$26.99



Bonus-Size Radiant Moisture Body Lotion
48 hours of moisture. 1 litre
226-505-2
reg. \$28
\$19.99
Pump sold separately.



Bonus-Size Supreme Nourishment Body Lotion
48 hours of moisture. 1 litre
226-506-2
reg. \$28
\$19.99
Pump sold separately.



Sold separately:
Bonus-Size Skin So Soft and Moisture Therapy Body Lotion Pump
226-602-2
\$3.99



Bonus-Size Moisture Therapy Intensive Healing & Repair Body Lotion
72-hour moisture for extra-dry skin. Fragrance-free. 1 litre
226-456-4
reg. \$28
\$19.99
Pump sold separately.



Bonus-Size Moisture Therapy Daily Skin Defense Body Lotion
Helps restore moisture to everyday dry skin. 1 litre
226-455-9
reg. \$28
\$19.99
Pump sold separately.



Bonus-Size Moisture Therapy Calming Relief Body Lotion
Soothes and relieves dry, itchy skin. Fragrance-free. 1 litre
226-456-6
reg. \$28
\$19.99
Pump sold separately.



Sold separately:
Bonus-Size Skin So Soft and Moisture Therapy Body Lotion Pump
226-602-2
\$3.99

Moisture Therapy Intensive Healing & Repair Extra Strength Cream
24-hour moisturization. Fragrance-free. 150 g
101-614-5
reg. \$12
\$7.99



Moisture Therapy Balance and Soothe Body Lotion
Skin looks softer and healthier. 390 ml
222-431-8
reg. \$35
\$28

Moisture Therapy Balance and Soothe Body Wash
Softens as it gently cleanses. 390 ml
222-431-7
reg. \$33
\$25



Senses Cozy Vanilla & Coconut Body Scrub
With shea butter. 255 g
224-996-8
reg. \$30
\$20.99



Senses Cozy Vanilla & Coconut Shower Gel
Moisturizing cleanser. 295 ml
226-509-9
reg. \$24
\$19.99



Senses Cozy Vanilla & Coconut Body Lotion
With shea butter and vitamin E. 236 ml
221-935-9
reg. \$24
\$19.99



Senses Cozy Vanilla & Coconut Body Mist
With refreshing aloe vera extract. 236 ml
221-935-8
reg. \$25.50
\$20.99



Senses Cozy Vanilla & Coconut Hand Soap
With moisturizing glycerin. 300 ml
222-938-4
reg. \$20
\$14.99



Senses Cozy Vanilla & Coconut Hand Cream
With shea butter and antioxidants. 75 ml
226-452-3
reg. \$9
\$6.99



Senses Sparkling Grapefruit & Orange Blossom
Energize with a juicy mix of zesty grapefruit, bright orange blossom and delicate honeysuckle.

Shower Gel
Moisturizing cleanser derived from coconut. 295 ml 226-511-1
reg. \$24
\$19.99

Body Lotion
With shea butter and vitamin E. 236 ml 226-511-0
reg. \$24
\$19.99

Body Mist
With refreshing aloe vera extract. 236 ml 221-935-5
reg. \$25.50
\$20.99

Hand Soap
With moisturizing glycerin. 300 ml 222-938-2
reg. \$20
\$14.99

Hand Cream
With shea butter and antioxidants. 75 ml 222-938-5
reg. \$9
\$6.99



soak away stress

Senses Bubble Bath
700 ml
reg. \$16
\$9.99 each

 Cherry Blossom 109-259-8	 Sensitive Skin 225-970-5	 Lavender Garden 109-282-3	 Soft Pink 109-260-2	
 Cucumber Melon 226-404-4	 Orange & Honeysuckle 226-408-6	 Endless Ocean 109-260-1	 Lily & Honeysuckle Blossom 109-228-8	 Vanilla Cream 225-970-7

bee goodness for hair

With revitalizing honey, royal jelly and propolis (tree sap plus beeswax).



Elastine PropoliThera

Volumizing

Enhances texture. Hair looks fuller, thicker, stronger. 500 ml

- A. Shampoo 222-244-8
- B. Conditioner 222-244-9

Damage Repair

Helps hair appear smooth and manageable. 500 ml

- C. Shampoo 226-136-9
- D. Conditioner 226-137-0

E. Hair Oil Serum

Helps to strengthen, protect, moisturize and smooth hair, and to add shine. 170 ml 222-245-4

F. Hair Mask

Enriched with nutrients to help deeply nourish hair and mend damaged split ends. 300 ml 226-137-1

reg. \$26

\$22.49 each



Root Touch-Up

Instantly covers up roots and bare spots. With black bean and ginseng. Built-in mirror. 7 g reg. \$26

\$22 each



Reddish Brown 222-134-9
Light Brown 222-135-0
Dark Brown 222-135-2
Black 222-135-3



Elastine PropoliThera Leave-In Conditioner

Nourishes dry hair. With royal jelly. 240 ml 222-551-1
reg. \$27

\$21



Advance Techniques 360 Nourish with Moroccan Argan Oil Leave-In Treatment

Moisturizes dry, damaged hair. With vitamins B and E. 60 ml 226-446-0 reg. \$22.50

\$15.49



Advance Techniques Daily Shine Dry Ends Serum

Helps mend and nourish split ends instantly. With pro-vitamin B5. 60 ml 226-446-1
reg. \$16

\$11.99



Advance Techniques Daily Shine 2-in-1 Shampoo & Conditioner

Leaves hair feeling clean, conditioned and frizz-free. With pro-vitamin B5. 350 ml 224-986-0
reg. \$15

\$9.99

**Skin So Soft Original
Replenishing Hand Cream**
100 ml 107-728-6
reg. \$7

**Skin So Soft Radiant Moisture
Replenishing Hand Cream**
100 ml 107-728-7
reg. \$7

**Skin So Soft Soft & Sensual
Replenishing Hand Cream**
100 ml 114-351-6
reg. \$7

**Moisture Therapy
Intensive Healing & Repair
Hand Cream**
125 ml 225-617-8
reg. \$9

**Avon Care Silicone Glove
Protective Hand Cream**
100 ml 225-718-6
reg. \$9
\$3.99 each



**24-hour
odour
protection**

**Roll-On
Anti-Perspirant
Deodorant**
75 ml
reg. \$5
\$3.69 each



**Senses Shower Gel
Blushing Cherry Blossom**
150 ml 225-971-1
reg. \$9
\$5.99



**Senses Shower Gel
Juicy Pomegranate &
Mango** 150 ml 108-471-4
reg. \$9
\$5.99



**Senses Shower Gel
Fresh Cucumber & Melon**
150 ml 108-427-5
reg. \$9
\$5.99



**Senses Shower Gel
Silky Vanilla**
150 ml 108-470-6
reg. \$9
\$5.99



**Skin So Soft Original
Shower Gel**
150 ml 225-970-0
reg. \$12
\$5.99



**Skin So Soft Soft & Sensual
Shower Gel**
150 ml 225-970-2
reg. \$12
\$5.99



**Skin So Soft Radiant Moisture
Shower Gel**
150 ml 225-970-3
reg. \$12
\$5.99



**Skin So Soft
Supreme Nourishment
Tropical Coconut Lip Balm**
4.1 g 222-944-3
reg. \$3
\$1.99



**Moisture Therapy
Intensive Healing & Repair
Moisturizing Lip Treatment Balm**
4.1 g 226-451-8
reg. \$3
\$1.99



Perfumed Liquid Deodorant
Aluminum-free. Fast-drying.
Easy fingertip application.
Soft floral scent. 59 ml
298-088 reg. \$9
\$6.50

**MOISTURE THERAPY
BALANCE + SOOTHE SET**

Body Wash
390 ml

Body Lotion
390 ml

Exfoliation Mitt
Microfibre jacquard
with nylon spandex cuff.

3-PIECE SET
\$44.99
\$83 VALUE



COZY VANILLA & COCONUT SET

Hand Soap
300 ml

Hand Cream
75 ml

Body Lotion
236 ml

3-PIECE SET
\$24.99
\$53 VALUE

To order items on
this page, please
go to avon.ca.



**SKIN SO SOFT
SOFT & SENSUAL SET**

Shower Gel
150 ml

Bath Oil
500 ml

Body Lotion
350 ml

3-PIECE SET
\$25.99
\$62 VALUE



FOOT WORKS SET

Deodorizing Spray
100 g

Overnight Renewing Cream
100 ml

Pedicure Kit
Case, 9 cm L x 12 cm W.

3-PIECE SET
\$19.99
\$43 VALUE

To order items on this page,
please go to avon.ca.



set hearts afire

with romantic touches
like brilliant pinks
and black satin bows.



NEW

Pavé Ombré Heart Collection

Goldtone with shades of pink glass crystal stones and centre heart-shaped siam-coloured stone.

Drop Earrings

3 cm L. Pierced.

226-495-6

reg. \$18.99

\$14.99

Pendant Necklace

42 cm L with

9 cm extender.

Pendant, 3 cm L.

226-495-5

reg. \$23.99

\$18.99

Ring

1 cm W.

6 226-495-7

8 226-495-8

10 226-495-9

reg. \$18.99

\$14.99

Classic Red Heart Watch

Red leatherlike strap,

23 cm L. Pavé goldtone

case, 32 mm diam.

Water-resistant to 3

ATM. Quartz movement.

226-472-5

reg. \$68.99

\$54.99



necklace and
earring set

NEW

Satin Bow Collection

White pearlesque beads with black satin ribbon.

Necklace and Earring Set

42 cm L with 9 cm extender.

Pierced studs. 226-459-8

reg. \$36.99

\$28.99 the set

Bracelet

Stretches to fit most.

226-459-9

reg. \$23.99

\$18.99

lasting love

endures with timeless,
elegant pieces in luxe metals.



NEW

Stainless Steel CZ Collection
CZs set in stainless steel.

Heart Stud Earrings

1 cm L. 6-carat total weight equivalent. Pierced. **226-520-8** reg. \$64.99

\$49.99

Heart Necklace

43 cm L with 3 cm extender. Pendant, 1 cm L. 11-carat equivalent. **226-520-9** reg. \$64.99

\$49.99

Tennis Bracelet

18 cm L. 28-carat total weight equivalent. **226-520-7** reg. \$89.99

\$69.99



NEW

Sterling Silver Heart with Pearl Collection

Genuine freshwater pearl and cz accents set in sterling silver.

Stud Earrings

1 cm L. Pierced. **226-521-1** reg. \$95.99

\$72.99

Pendant Necklace

43 cm L with 3 cm extender. Pendant, 1 cm L. **226-521-0** reg. \$95.99

\$72.99

Pearl Ring

1 cm W. 5 **226-521-3** 8 **226-521-6**
6 **226-521-4** 9 **226-521-7**
7 **226-521-5** 10 **226-521-8** reg. \$95.99

\$72.99

endearing expressions

to gift, share...and stack!



NEW

Pull-Cord Bracelet
Adjustable; one size fits most.

Good Vibes Self Love
Red and orange beads with goldtone.
226-495-3
reg. \$18.99
\$14.99

Bestie
Blue beads with goldtone.
226-495-2
reg. \$18.99
\$14.99

Soul Sister
Silver-tone cross and beads.
226-495-1
reg. \$23.99
\$18.99



Solid Statement Hoop Earrings
Silver-tone. 5 cm L.
Pierced. 226-514-2
reg. \$18.99
\$14.99

Interlocking Double Hoop Earrings
Goldtone double hoop earrings. 8 cm L.
Pierced. 226-493-9
reg. \$14.99
\$11.99



6-pair pack

Modern Hoops Earring Pack
6 pairs of pierced hoops in goldtone and silver-tone. Largest, 3 cm L. 226-494-7
reg. \$28.99
\$21.99 the pack



necklace and earring set

Be Bold Statement Necklace and Earring Set
Chunky goldtone chain, 42 cm L with 9 cm extender. Pierced earrings, 3 cm L.
226-514-3
reg. \$45.99
\$35.99 the set



necklace and earring set

Waterfall Y Necklace and Earring Set
Silver-tone box chain with rope-like detail. 56 cm L with 9 cm extender. Drop, 18 cm L. Pierced earrings, 6 cm L.
226-495-4
reg. \$36.99
\$28.99 the set

STUDIO
1886

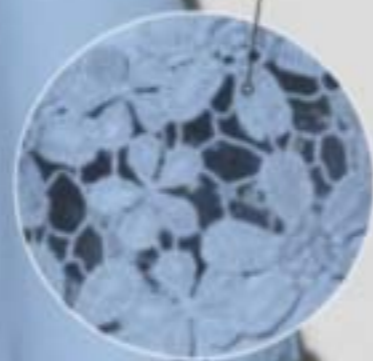
pretty, polished

Where relaxed meets luxe with touches of lace, classically chic stripes and cozy knit textures. Your outfit of the day...every day.



LIGHT BLUE HUE
a cool neutral,
perfect for
the season

LACE APPLIQUÉ
with cutout
detail



SUBTLE SHIRTTAIL HEM
lends a fashionable touch

NEW

◆ Lace Sleeve Detail Top

Light blue V-neck top with cuffed long sleeves, lace appliqué detail and shirttail hem.

Body: cotton/polyester; lace: 100% polyester; rib cuff: cotton/polyester/spandex.

Centre back length: 66 cm on M; 70 cm on 1X. Machine wash, dry flat.

XS(0-2) 226-421-0 M(8-10) 226-421-2 XL(16) 226-421-4 2X(22W-24W) 226-421-6

S(4-6) 226-421-1 L(12-14) 226-421-3 1X(18W-20W) 226-421-5 3X(26W-28W) 226-421-7

reg. \$64.99

\$59.99



BOATNECK
in solid black for a touch of mod

2-PIECE SET

SIDE SEAM POCKETS
functional... and won't add bulk

SIDE SLITS
add a little movement for a flattering fit

classic
combo

NEW

◆ 2-Piece Striped Set

Black-and-white striped top with boatneck, ¾ sleeves and side slits. Black pull-on pants with elastic waistband and side seam pockets. Polyester/spandex. Centre back length: 66 cm on M; 71 cm on 1X. Inseam: 71 cm on all sizes. Machine wash, line dry.

XS(0-2) 226-501-9

S(4-6) 226-502-0

M(8-10) 226-502-1

L(12-14) 226-502-2

XL(16) 226-502-3

1X(18W-20W) 226-502-4

2X(22W-24W) 226-502-5

3X(26W-28W) 226-502-6

reg. \$79.99

\$61.99 the set

the season's softest staple



**FUNCTIONAL
BUTTON TABS**
so sleeves can
be worn long
or rolled up

**SCOOP
NECKLINE**
with faux
button
placket for
added detail

**WAFFLE
KNIT**
for cozy
lightweight
warmth

NEW

❖ **Waffle Henley Top**

Lavender waffle Henley with scoop neck, non-functional button detail and long sleeves with functional button tabs. Polyester/spandex. Centre back length: 66 cm on M; 69 cm on 1X. Machine wash, line dry.

XS(0-2) 226-502-7 M(8-10) 226-502-9 XL(16) 226-503-1 2X(22W-24W) 226-503-3
S(4-6) 226-502-8 L(12-14) 226-503-0 1X(18W-20W) 226-503-2 3X(26W-28W) 226-503-4

reg. \$59.99

\$49.99

the bold
shoulder

❖ **Studded Keyhole Top**

Pink top with round neckline and keyhole, silvery studs on front shoulders, long cuffed sleeves and shirrtail hem. Polyester/spandex. Centre back length: 61 cm on M; 67 cm on 1X. Machine wash, line dry.

XS(0-2) 226-423-4
S(4-6) 226-423-5
M(8-10) 226-423-6
L(12-14) 226-423-7
XL(16) 226-423-8
1X(18W-20W) 226-423-9
2X(22W-24W) 226-424-0
3X(26W-28W) 226-424-1
reg. \$62.99

\$57.99



**SILVERY
STUDS**
on front
shoulders,
plus keyhole
neckline for
a fun detail

**ASYMMETRICAL
BUTTON DETAIL**
gives this tunic
a fresh
contemporary feel



❖ **Mixed Rib-Detail Tunic**

Ivory tunic with round neckline, front asymmetrical button detail and long sleeves with exaggerated rib cuffs. Polyester/spandex. Centre back length: 69 cm on M; 74 cm on 1X. Machine wash, line dry.

XS(0-2) 226-496-1 XL(16) 226-496-5
S(4-6) 226-496-2 1X(18W-20W) 226-496-6
M(8-10) 226-496-3 2X(22W-24W) 226-496-7
L(12-14) 226-496-4 3X(26W-28W) 226-496-8
reg. \$74.99

\$59.99

APPAREL SIZE CHART (IN CM)

SIZE	BUST	WAIST	HIP
XS 0/2	77 - 81	60 - 64	83 - 86
S 4/6	85 - 89	67 - 71	90 - 94
M 8/10	93 - 97	75 - 79	98 - 102
L 12/14	100 - 104	83 - 86	105 - 109
XL 16	109 - 112	90 - 93	113 - 116
1X 18W/20W	118 - 123	99 - 104	122 - 127
2X 22W/24W	128 - 133	109 - 114	132 - 137
3X 26W/28W	138 - 144	119 - 124	142 - 147

cool crew colours

❖ 3-Pack Crew Long-Sleeve Tees

Includes dark grey, lavender and brushstroke-print tees with crew neck, long sleeves and straight hem. Cotton/polyester. Centre back length: 64 cm on M; 69 cm on 1X. Machine wash, dry flat.

XS(0-2) 226-501-1
S(4-6) 226-501-2
M(8-10) 226-501-3
L(12-14) 226-501-4
XL(16) 226-501-5
1X(18W-20W) 226-501-6
2X(22W-24W) 226-501-7
3X(26W-28W) 226-501-8
reg. \$74.99

\$59.99
the pack

A bestselling style,
now with a crew neck!

BRUSHSTROKE PRINT
for a unique,
painterly look in cool,
calming tones



3-PACK

❖ Oversized Button-Down Plaid Shirt

Pink, white and grey plaid oversized shirt with collared neck, full-button placket, two chest pockets with flaps, side slits and long cuffed sleeves with functional button tab. 100% polyester. Centre back length: 77 cm on M; 81 cm on 1X. Machine wash, line dry.

XS(0-2) 226-428-2 XL(16) 226-428-6
S(4-6) 226-428-3 1X(18W-20W) 226-428-7
M(8-10) 226-428-4 2X(22W-24W) 226-428-8
L(12-14) 226-428-5 3X(26W-28W) 226-428-9
reg. \$64.99

\$59.99



BUTTON TABS
long sleeves
with cuffs can
be worn long
or rolled up

**FLAP
POCKETS**
with button
closure

**THINNER
ELASTIC
WAISTBAND**
for pull-on
comfort that
still feels
secure

2-PACK

HEATHER GREY
a darker shade
of grey that
works well for
winter wear



SIDE SLITS
give the
relaxed
boyfriend fit
a feminine
feel

❖ 2-Pack Leggings

Includes black and heather grey pull-on leggings with new thinner elastic waistband. Cotton/spandex. Inseam: 69 cm on all sizes. Machine wash, dry flat.

XS(0-2) 226-431-4
S(4-6) 226-431-5
M(8-10) 226-431-6
L(12-14) 226-431-7
XL(16) 226-431-8
1X(18W-20W) 226-431-9
2X(22W-24W) 226-432-0
3X(26W-28W) 226-432-1
reg. \$57.99

\$52.99 the pack



Grey Black





Anew Ultimate Multi-Performance Eye System
 Cream, 15 g; Elixir, 2.5 g.
 226-046-3
 reg. \$59
\$36.99



Anew Ultimate Multi-Performance Night Cream
 50 g 226-044-8
 reg. \$59
\$36.99



Anew Ultimate Night Repair Serum
 30 ml 224-621-9
 reg. \$63
\$38.99



Isa Knox Anew Clinical Collagen Booster Eye Lift Pro Dual Eye System
 Gel, 10 ml; Cream, 10 ml
 225-718-1
 reg. \$56
\$33.99



Isa Knox Anew Clinical Collagen Booster Firming Cream
 50 ml 226-035-4
 reg. \$65
\$39.99



Anew Ultimate Supreme Dual Elixir
 Serum/Oil, 20 ml each.
 222-400-7
 reg. \$84
\$55



Anew Ultimate Supreme Advanced Performance Crème
 50 g 226-055-8
 reg. \$84
\$55



Anew Ultimate Supreme Eye Balm
 2.9 g 224-621-8
 reg. \$63
\$38.99



Isa Knox Anew Clinical Collagen Booster Microneedling Polisher
 50 ml 221-459-9
 reg. \$48
\$27.99



Isa Knox Anew Clinical Collagen Booster Rejuvenating Serum Ampoules
 60 capsulated single-use ampoules, 0.22 ml each.
 221-391-4 reg. \$88
\$69.99



Isa Knox Anew Clinical Revitalize & Reveal Advanced Wrinkle Corrector
 50 ml 226-060-2
 reg. \$56
\$33.99



Anew Platinum Eye & Lip Cream
 15 g 226-046-5
 reg. \$59
\$36.99



Anew Platinum Firm and Sculpt Cream for Neck and Chest
 50 g 226-045-1
 reg. \$59
\$36.99



Anew Platinum Night Cream
 50 g 226-044-9
 reg. \$59
\$36.99



Isa Knox Anew Clinical Revitalize & Reveal Resurfacing Lotion for Body
 150 ml 223-261-2
 reg. \$48
\$27.99



Isa Knox Anew Clinical Revitalize & Reveal Extra Strength Retexturizing Peel
 30 fragrance-free pads, 5 cm diam.
 226-067-3 reg. \$56
\$33.99



Isa Knox Anew Clinical Revitalize & Reveal Resurfacing Expert Smoothing Fluid
 30 ml 226-082-2
 reg. \$62
\$38.99



Anew Platinum Age Delay Serum
 30 ml 224-622-0
 reg. \$63
\$38.99



Anew Platinum Sculpting Body Serum
 200 ml 226-033-0
 reg. \$63
\$38.99



Anew Power Serum
 30 ml 106-273-6
 reg. \$63
\$38.99



Isa Knox Anew Clinical Line Eraser with Retinol [1.0%] Advanced Retinol Serum
 30 ml 223-424-8
 reg. \$72
\$55.99



Isa Knox Anew Clinical Line Eraser with Retinol Treatment
 30 g 226-060-0
 reg. \$63
\$39.99



Isa Knox Anew Clinical Line Eraser with Retinol Targeted Treatment
 20 ml 226-061-1
 reg. \$56
\$33.99



**Anew Vitamin C
Illuminating Priming
Moisturizer**
50 ml 226-056-0
reg. \$48
\$26.99



**Anew Vitamin C
Brightening Serum**
30 ml 225-768-0
reg. \$62
\$34.99



**Isa Knox LXNEW Clean
Nourishing Cream
Cleanser**
150 ml 222-986-2
reg. \$18
\$14.99



**Isa Knox LXNEW Clean
2-in-1 Exfoliating
Cleansing Balm**
Not available.



**Anew Vitamin C
Nourishing Body Butter**
230 ml 225-903-7
reg. \$45
\$24.99



**Anew Vitamin C
Glow Body Scrub**
255 g 224-623-6
reg. \$50
\$28.99



**Isa Knox LXNEW Clean
Soothing Whipped Oil
Cleanser**
150 ml 223-124-6
reg. \$24
\$18.99



**Anew Hydra Fusion
1.5% Hyaluronic Acid Serum**
30 ml 226-083-8
reg. \$62
\$44



**Anew Hydra Fusion
De-Puffing Eye Serum**
15 ml 226-060-3
reg. \$48
\$26.99



**Anew Vitamin C
Brightening Eye Cream**
15 ml 221-940-3
reg. \$48
\$26.99



**Anew Vitamin C
Antioxidant Lip Treatment**
3.8 g 222-256-6
reg. \$20
\$11.99



**Anew Hydra Fusion
Cleansing Micellar Water**
300 ml 226-055-3
reg. \$20
\$12.99



**Anew Hydra Fusion
Nighttime Facial Treatment**
50 ml 226-083-9
reg. \$48
\$26.99



**Anew Hydra Fusion
Gel Cream**
50 g 226-055-5
reg. \$48
\$26.99



Farm Rx Bakuchiol Eye Cream
30 ml 223-643-8
reg. \$53
\$39.99



Farm Rx Bakuchiol Cream
90 ml 224-113-1
reg. \$63
\$45.99



Rice Water Bright Foaming Cleanser
300 ml
221-900-0
reg. \$19
\$16



Farm Rx Bakuchiol Serum
30 ml 223-643-7
reg. \$63
\$45.99



Farm Rx Super Greens Cooling Gel
90 ml 223-642-5
reg. \$53
\$39.99



Farm Rx Super Greens Multivitamin Moisture Cream
90 ml 223-642-6
reg. \$53
\$39.99



Rice Water Bright Rice Bran Gentle Exfoliating Cleanser
300 ml
223-093-3
reg. \$23
\$19



Rice Water Bright Cleansing Facial Wipes
50 wipes.
221-900-8
reg. \$16
\$13



Farm Rx Super Greens Refreshing Eye Cream
30 ml 225-599-0
reg. \$44
\$32.99



Farm Rx Super Greens Refreshing Gel Cleanser
240 ml 224-108-4
reg. \$35
\$24.99



Avon Solutions Nurtura Replenishing Cream
50 ml 226-045-8
reg. \$20
\$13.99



Rice Water Bright Facial Cleansing Lotion
200 ml
225-531-3
reg. \$18
\$14.99



Rice Water Bright Light Facial Cleansing Oil
150 ml
225-531-8
reg. \$20
\$16.99



Avon Solutions Banishing Cream Skin Discoloration Improver
75 ml 917-47
reg. \$20
\$13.99



Avon Solutions Anti-Aging Cream
50 ml 226-059-5
reg. \$20
\$13.99



Avon Solutions Dramatic Firming Cream
50 ml 226-059-9
reg. \$20
\$13.99



Rice Water Bright Mild Cleansing Water
500 ml
224-135-7
reg. \$20
\$17



Rice Water Bright Facial Massage Cream
200 ml
224-113-9
reg. \$34
\$26



Far Away
Eau de Parfum
50 ml 223-198-3
reg. \$35
\$24.99



Far Away
Hair and Body Mist
96 ml 223-058-6
reg. \$22
\$16.99



Far Away
Body Scrub & Wash
200 ml 225-001-2
reg. \$17
\$13.99



Rare Gold
Eau de Parfum
50 ml 102-456-9
reg. \$35
\$24.99



Rare Amethyst
Eau de Parfum
50 ml 102-456-8
reg. \$35
\$24.99



Imari Seduction
Eau de Toilette
50 ml 220-270-2
reg. \$35
\$24.99



Far Away
Body Lotion
200 ml 225-718-7
reg. \$17
\$8.99



Far Away
Hand Cream
75 ml 225-580-4
reg. \$10
\$6.99



Far Away Bali
Eau de Parfum
50 ml 223-059-2
reg. \$35
\$24.99



Imari Amor
Eau de Parfum
50 ml 224-353-2
reg. \$35
\$24.99



Imari
Eau de Toilette
50 ml 222-370-1
reg. \$35
\$24.99



Haiku Reflection
Eau de Parfum
50 ml 115-861-8
reg. \$35
\$24.99



Far Away Gold
Eau de Parfum
50 ml 223-197-1
reg. \$35
\$24.99



Far Away Infinity
Eau de Parfum
50 ml 223-197-4
reg. \$35
\$24.99



Rare Pearls
Eau de Parfum
50 ml 223-987-9
reg. \$35
\$24.99



Haiku Kyoto Flower
Eau de Parfum
50 ml 435-140
reg. \$35
\$24.99



Haiku
Eau de Parfum
50 ml 220-269-8
reg. \$35
\$24.99



Haiku
Hair and Body Mist
96 ml 223-058-7
reg. \$22
\$16.99



Rare Pearls
Hair and Body Mist
96 ml 223-058-8
reg. \$22
\$16.99



Rare Pearls
Body Lotion
200 ml 225-725-4
reg. \$17
\$8.99



Rare Pearls
Hand Cream
75 ml 225-580-3
reg. \$10
\$6.99



Haiku
Body Scrub & Wash
200 ml 225-001-0
reg. \$17
\$13.99



Haiku
Body Lotion
200 ml 225-619-3
reg. \$17
\$8.99



Haiku
Hand Cream
75 ml 225-580-2
reg. \$10
\$6.99



LYRD Honeysuckle Blossom
Eau de Parfum
50 ml 223-300-7
reg. \$42
\$28



LYRD Peony Rosé
Eau de Parfum
50 ml 223-300-5
reg. \$42
\$28



LYRD Oud Rose
Eau de Parfum
50 ml 223-185-0
reg. \$52
\$42



Black Suede
Eau de Toilette
100 ml 223-988-3
reg. \$32
\$19.99



Black Suede
Hair and Body Wash
150 ml 222-701-7
reg. \$12
\$5.99



Black Suede
Aftershave Conditioner
100 ml 226-245-6
reg. \$12
\$5.99



Live Out Loud
Eau de Parfum
50 ml 221-142-5
reg. \$56
\$35



Live Out Loud #4U
Eau de Parfum
50 ml 225-515-5
reg. \$56
\$35



Today
Eau de Parfum
50 ml 836-39
reg. \$42
\$32



Black Suede Bar Soap
90 g 224-707-2
reg. \$9
\$5.99



Avon Exploration
Eau de Toilette
75 ml 122-508-2
reg. \$35
\$24.99



Wild Country
Cologne
88 ml 836-47
reg. \$32
\$19.99



Mesmerize Cologne
100 ml 222-370-2
reg. \$35
\$24.99



Mesmerize Black
Eau de Toilette
100 ml 108-628-3
reg. \$35
\$24.99



Perceive Cologne
100 ml 831-73
reg. \$35
\$24.99



Alpha
Eau de Toilette
100 ml 104-118-3
reg. \$35
\$24.99



Studio 1886 Gentleman
Eau de Toilette
50 ml 225-000-9
reg. \$70
\$54.99



Studio 1886 Gentleman
Aftershave Lotion
200 ml 225-593-0
reg. \$23
19.99



Wild Country
Aftershave Splash
118 ml 222-574-4
reg. \$19
\$14.99



Wild Country
Hair and Body Wash
150 ml 225-959-3
reg. \$12
\$5.99



Wild Country Bar Soap
90 g 224-707-3
reg. \$9
\$5.99



Timeless Avon Classics Collection
Eau de Cologne Spray
50 ml 110-373-1
reg. \$26
\$15.99



Timeless Avon Classics Collection
Hand Cream
75 ml 224-092-0
reg. \$9
\$5.99



Timeless Perfumed Skin Softener
150 ml
222-623-1
reg. \$12
\$6.99



Haiku Perfumed Skin Softener
150 ml
222-702-2
reg. \$12
\$6.99



Dreamlife Avon Classics
Collection Eau de Cologne Spray
50 ml 224-615-4
reg. \$26
\$15.99



Sweet Honesty Avon Classics
Collection Eau de Cologne Spray
50 ml 110-437-8
reg. \$26
\$15.99



Sweet Honesty Avon Classics
Collection Hand Cream
75 ml 224-092-1
reg. \$9
\$5.99



Sweet Honesty Perfumed Skin Softener
150 ml
222-623-0
reg. \$12
\$6.99



Imari Perfumed Skin Softener
150 ml
222-701-8
reg. \$12
\$6.99



Topaze Avon Classics Collection
Eau de Cologne Spray
50 ml 223-321-3
reg. \$26
\$15.99



Night Magic Avon Classics
Collection Eau de Cologne Spray
50 ml 110-300-9
reg. \$26
\$15.99



Night Magic Avon Classics
Collection Hand Cream
75 ml 224-092-2
reg. \$9
\$5.99



Night Magic Evening Musk
Perfumed Skin Softener
150 ml 222-623-2
reg. \$12
\$6.99



Far Away Perfumed Skin Softener
150 ml
222-702-0
reg. \$12
\$6.99



Free O₂
Eau de Toilette Spray
50 ml 222-618-9
reg. \$26
\$15.99



Odyssey Avon Classics Collection
Eau de Cologne Spray
50 ml 110-321-2
reg. \$26
\$15.99



Candid Avon Classics Collection
Eau de Cologne Spray
50 ml 110-321-3
reg. \$26
\$15.99



Odyssey Perfumed Skin Softener
150 ml
222-623-4
reg. \$12
\$6.99



Candid Perfumed Skin Softener
150 ml
222-623-3
reg. \$12
\$6.99



- | | | | | | | | | |
|--------------------------|-----------------------|--------------------------------------|----------------------------|--------------------------|------------------------|----------------------------|---------------------------|-------------------------|
| Wild Cherry
224-849-8 | Blaze
222-948-3 | Constellation (Shimmer)
224-850-0 | Stellar
225-661-3 | Honeyflower
225-661-2 | Poppy
222-948-5 | Aster
224-849-7 | Desert Moon
224-850-3 | Windstorm
222-947-3 |
| Equinox
224-850-4 | Twilight
224-850-5 | Cyclone
222-947-6 | Sierra Sunset
222-947-7 | Luna
222-947-8 | Wildrose
222-948-9 | Plum Blossom
224-850-2 | Dahlia
225-661-1 | Rose Angel
222-948-6 |
| Aurora
225-661-4 | Hibiscus
222-948-7 | Wildflower
222-948-8 | Eclipse
224-849-6 | Tulip
224-849-9 | Celestial
222-948-0 | Morning Glory
224-850-1 | Violet Night
222-949-0 | |

fmg Glimmer Satin Lipstick
3 g
reg. \$17
\$12.99



- | | | | |
|------------------------|--------------------|-----------------------|------------------------|
| Aubergine
225-663-7 | Taupe
224-972-6 | Espresso
224-973-1 | Buff
224-972-5 |
| Rosewood
224-972-8 | Blush
224-973-0 | Berry
224-972-9 | Smokeshow
225-663-9 |
| Mauve
224-972-7 | Moss
225-661-9 | PeriWink
225-663-8 | Azure
224-973-2 |

fmg CathyCat Shadow Gaze Matte Color Stick
1.35 g
reg. \$27
\$20.99



Essential Eyes
226-127-5



Enchanted Eyes
226-127-4

fmg Cashmere Eyeshadow Palette
18 g reg. \$58
\$48



- | | |
|--------------------------|----------------------------|
| Lovin' Life
225-716-2 | Birthday Suit
225-716-4 |
| PYT
225-716-3 | Surprise!
225-716-5 |
| Fine Wine
225-716-6 | Birthday Post
225-716-7 |

fmg Glimmer Birthday Balm Lip Crayon 2.7 g
reg. \$21
\$15.99



- | | |
|---------------------------|--------------------------|
| Love Affair
225-989-5 | Pucker Up
225-989-0 |
| Secret Crush
225-989-2 | Rendezvous
225-989-3 |
| Tease
225-989-1 | Flirtatious
225-989-4 |

fmg LOVE Lip Butter
2.7 g
reg. \$26
\$19.99



- | | | | |
|-------------------------------------|---|---------------------------------------|----------------------------------|
| MATTE SATEEN Citrine
222-434-6 | MATTE SATEEN Pink Sapphire
222-434-5 | MATTE SATEEN Tiger's Eye
222-434-8 | MATTE SATEEN Jasper
222-434-7 |
| SHIMMER Pink Topaz
221-851-3 | SHIMMER Crystal Lilac
221-851-1 | SHIMMER Rose Gold
221-139-8 | SHIMMER Bronze Age
221-139-9 |
| GLITTER Peach Sapphire
221-139-4 | GLITTER Fool's Gold
221-139-6 | GLITTER Ultramarine
221-138-9 | |

fmg Glimmershadow Liquid Eyeshadow
2 ml reg. \$17
\$12.99



- | | |
|---------------------------|------------------------------|
| Crazy Rabbit
224-860-2 | Sour Candy
224-860-1 |
| Felt Pink
224-860-0 | Blackberry Bite
224-860-4 |

TPSY Forever Lip Marker
2.5 ml
reg. \$24
\$18.99



- | |
|--------------------------|
| Love Galore
224-859-8 |
|--------------------------|

TPSY Shiny Lip Oil
3.7 g
reg. \$24
\$18.99



- | | | | | |
|------------------------------|----------------------------|------------------------------|----------------------------|-----------------------------|
| MATTE Calypso
225-660-8 | MATTE Tigress
225-660-9 | MATTE Bombshell
225-660-7 | MATTE Icon
225-661-0 | MULTI Goddess
225-183-5 |
| MULTI Muse
225-181-8 | MULTI Minx
225-183-3 | MULTI Maven
225-183-2 | MULTI Siren
225-183-7 | MULTI Mistress
225-183-0 |
| MULTI Temptress
225-183-1 | MULTI Idol
225-183-4 | MULTI Vixen
225-183-6 | MULTI Darling
225-181-9 | |

fmg Glimmer Eyeshadow Quad
6 g
reg. \$22
\$16.99



		
Blackest Black 223-259-0	Saturn Grey 223-258-6	Majestic Plum 223-258-5
		
Cosmic Brown 223-258-9	Starry Night 223-258-8	Emerald Green 223-258-7

fmg Glimmer Cream Eyeliner
0.28 g
reg. \$13
\$5.99




			
Honey Peach 223-255-4	Lava Red 223-255-5	Passion Red 223-255-3	Red Brick 223-256-0
			
Mystery Mauve 223-256-1	Candy Apple 223-255-6	Pink Bouquet 223-255-9	Merlot 223-255-7
			
Au Naturel 223-255-8	Simply Spice 223-256-2	Chocolate 223-256-3	Perfect Plum 223-256-4

fmg Glimmer Lipliner
0.28 g
reg. \$13
\$5.99




	
Blonde 223-284-4	Soft Brown 223-284-5
	
Medium Brown 223-284-6	Brown Black 223-284-7

fmg Colors of LOVE Hi-Brow Tinted Brow Gel
3.7 ml
reg. \$26
\$19.99



fmg Colors of LOVE Hi-Brow Sculpting Brow Gel
3.3 ml
224-555-6
reg. \$26
\$19.99



		
Black Ice 223-258-0	Sterling 223-258-3	Smoky Diamond 223-257-6
		
Sugar Plum 223-258-1	Purple Rain 223-258-4	Brown Sugar 223-257-8
		
Twilight Sparkle 223-257-7	Olive 223-258-2	Teal Sparkle 223-257-9

fmg Glimmer Diamond Eyeliner
0.28 g
reg. \$13
\$5.99




			
Blackest Night 223-252-5	Smoky Grey 223-252-7	Raisin 223-252-8	Brown Chocolate 223-252-4
			
Midnight Blue 223-252-6	Blue Skies 223-252-9	Seafoam Green 223-253-0	

fmg Glimmer Waterproof Eyeliner
0.28 g
reg. \$13
\$5.99




Blackest Black 225-679-9

fmg LOVE at 1st Lash Mascara
9 ml
reg. \$26
\$19.99




Waterproof Blackest Black 222-014-9

fmg LOVE at 1st Lash Waterproof Mascara
8.5 ml
reg. \$26
\$19.99




Rich Black 224-700-0

fmg Cashmere Ultimate Volume Mascara
8 ml
reg. \$33
\$25.99



	
Light Blonde 223-412-6	Blonde 223-412-7
	
Tawny 223-412-8	Light Brown 223-413-0
	
Dark Brown 223-412-9	Brunette 223-413-1

fmg Glimmer Brow Definer
0.28 g
reg. \$13
\$5.99



	
Black 224-700-2	Black Brown 224-701-4

fmg Glimmer Always On Point Eyeliner
0.31 g
reg. \$15
\$11.99




Blackest Black 223-883-9

fmg Glimmer Liquid Eyeliner
1.1 ml
reg. \$18
\$14.99




Black 225-983-2

fmg Glimmer Wash-Off Waterproof Mascara
6 g
reg. \$17
\$12.99



	
Black 225-983-9	Brown Black 225-984-0

fmg Glimmer SuperExtend Nourishing Mascara
7 ml
reg. \$19
\$14.99




Black 225-983-8

fmg Glimmer SuperShock Volumizing Mascara
10 ml
reg. \$19
\$14.99






		
Fair 223-965-0	Fair Light 223-965-1	Light 223-965-2
		
Light Medium 223-965-3	Soft Medium 223-965-4	Medium 223-965-5
		
Medium Deep 223-965-6	Tan Deep 223-965-7	Deep 223-965-8

fmg Match Filter Serum Tint Foundation
9 g
reg. \$30
\$22.99



fmg Match Set Finishing Powder
6.5 g 224-487-0
reg. \$27
\$20.99



	
Prosecco 225-930-1	Rosé 225-930-2


fmg Glimmer Powder Illuminator
10 g
reg. \$20
\$15.99












fmg GLOKOLOR Lip Serum Pencil
1.8 g 225-634-9
reg. \$29
\$23



fmg Match Prime Face Perfector
30 ml
226-480-1
reg. \$24
\$18.99



		
Fair 225-676-5	Fair Light 225-676-6	Light 225-676-7
		
Light Medium 225-676-8	Soft Medium 225-676-9	Medium 225-677-0
		
Medium Deep 225-678-3	Tan Deep 225-679-0	Deep 225-679-1

fmg Match Tint Radiant Tinted Moisturizer
30 ml
reg. \$20
\$15.99



	
Petal Pink 224-958-7	Pink Passion 224-958-8

fmg Glimmer Powder Blush
8 g
reg. \$20
\$15.99



fmg GLOKOLOR Hybrid Face Primer
30 ml 225-725-6
reg. \$35
\$29

		
Sherbet: neutralizes dark circles & marks 225-818-3	Gelato: brightens dullness 225-818-1	Pistachio: neutralizes redness 225-817-9



fmg Match Wand Correcting Stick
6 g
reg. \$26
\$19.99








fmg Cashmere Under Eye Primer
9 g
224-948-4
reg. \$35
\$26.99



Plumeria 224-975-0

Rosette 224-974-9




fmg Glimmer Lip & Cheek Stain
5.5 ml
reg. \$24
\$18.99

	
Icy Petal 225-062-5	Blushing Nude 225-062-7
	
Golden Rose 225-062-3	Tropical Peach 225-063-8
	
Crushed Berry 225-063-6	



fmg Glimmer Be Blushed Cheek Color
4 g
reg. \$21
\$15.99



fmg GLOKOLOR Hybrid Face Mist
80 ml 225-725-5
reg. \$35
\$29



fmg Vanity Organizer
24 cm L x 15 cm W x 13 cm H.
Polyester. 225-067-5
reg. \$43
\$33.99



fmg Makeup Remover Wipes
Resealable pack of 24 wipes.
225-523-0
reg. \$14
\$10.99



fmg Set & Fix Spray
50 ml
226-042-9
reg. \$21
\$13.99



fmg Kabuki Brush
10 cm L x 3 cm diam.
223-424-7
reg. \$28
\$20.99



fmg Eyeshadow Blending Brush
15 cm L. 224-615-9
reg. \$22
\$16.99



fmg Blush & Contour Brush
18 cm L. 224-615-8
reg. \$32
\$24.99



fmg Moisturizing Eye Makeup Remover Lotion
75 ml 225-745-7
reg. \$12
\$7.99



fmg Waterproof Lip & Eye Makeup Remover
110 ml 226-026-1
reg. \$17
\$11.99



fmg Express Makeup Brush Wash
30 ml 225-595-0
reg. \$20
\$15.99



fmg Complexion Blending Brush
17 cm L. 224-615-6
reg. \$33
\$25.99



fmg Precision Eye Brush
13 cm L. 224-615-5
reg. \$22
\$16.99



Daily Beauty Tools Tweezers
9 cm L. 224-612-4
reg. \$6
\$4.99



fmg Oil Rewind Roller Ball
8 cm L x 3 cm W. 225-664-7
reg. \$26
\$19.99



fmg Flawless Complexion Sponge
6 cm L x 4 cm W. 225-067-4
reg. \$14
\$10.99



fmg Unready Makeup Remover Cloth
25 cm sq. 225-664-6
reg. \$20
\$15.99



fmg Glimmer Nail Lacquer Eraser Pen
4 ml 224-101-7
reg. \$17
\$12.99



fmg Glimmer Nail Lacquer Nail Base & Top Coat
Not shown. 226-251-0
12 ml
reg. \$17
\$12.99 each



Sold separately:
Bonus-Size Skin So Soft and Moisture Therapy Body Lotion Pump
 226-602-2
\$3.99

Bonus-Size Soft & Sensual Body Lotion
 1 litre
 226-505-5
 reg. \$28
\$19.99
 Pump sold separately.

Bonus-Size Soft & Sensual Shower Gel
 1 litre
 225-969-7
 reg. \$25
\$19.99

Soft & Sensual Shower Gel
 150 ml
 225-970-2
 reg. \$12
\$5.99

Original Bath Oil
 500 ml
 225-567-3
 reg. \$34
\$21.99

Bonus-Size Original Bath Oil
 739 ml
 225-567-2
 reg. \$42
\$26.99

Original Bath Oil Spray
 150 ml
 225-674-4
 reg. \$20
\$11.99
 Sold separately:
Bath Oil Spray Pump
 (not shown)
 226-602-6
\$3.99

Original Gelled Body Oil
 200 ml
 225-599-3
 reg. \$19
\$10.99

Soft & Sensual Body Lotion
 350 ml
 107-757-5
 reg. \$16
\$9.99

Bonus-Size Soft & Sensual Bath Oil
 739 ml
 225-567-4
 reg. \$42
\$26.99

Soft & Sensual Bath Oil
 500 ml
 225-566-0
 reg. \$34
\$21.99

Soft & Sensual Gelled Body Oil
 200 ml
 226-454-2
 reg. \$19
\$10.99

Original Shower Gel
 150 ml
 225-970-0
 reg. \$12
\$5.99

Bonus-Size Original Shower Gel
 1 litre
 225-969-4
 reg. \$25
\$19.99

Original Body Lotion
 350 ml
 226-457-0
 reg. \$16
\$9.99

Bonus-Size Original Body Lotion
 1 litre
 226-504-9
 reg. \$28
\$19.99
 Pump sold separately.

Soft & Sensual Beauty Bar Soap
 90 g
 224-348-2
 reg. \$6.50
\$4.99

Soft & Sensual Replenishing Hand Cream
 100 ml
 114-351-6
 reg. \$7
\$3.99

Acne-Prone Skin Soothing Spot Gel
 15 ml
 225-722-0
 reg. \$24
\$17.99

Acne-Prone Skin Foaming Cleanser
 150 ml
 225-721-9
 reg. \$24
\$17.99

Original Beauty Bar Soap
 90 g
 224-348-1
 reg. \$6.50
\$4.99

Original Replenishing Hand Cream
 100 ml
 107-728-6
 reg. \$7
\$3.99

Radiant Moisture Shower Gel
 150 ml
 225-970-3
 reg. \$12
\$5.99

Bonus-Size Radiant Moisture Bath Oil
 739 ml
 225-599-4
 reg. \$42
\$26.99

Acne-Prone Skin Body Pads
 70 pads.
 225-665-5
 reg. \$42
\$34.99

Acne-Prone Skin Exfoliating Body Wash
 300 ml
 225-721-7
 reg. \$28
\$22.99

Acne-Prone Skin Gentle Body Wash
 300 ml
 225-665-4
 reg. \$28
\$22.99

Acne-Prone Skin Soothing Gel
 180 ml
 225-665-7
 reg. \$28
\$22.99

Bonus-Size Radiant Moisture Shower Gel
 1 litre
 225-969-9
 reg. \$25
\$19.99

Bonus-Size Radiant Moisture Body Lotion
 1 litre
 226-505-2
 reg. \$28
\$19.99
 Pump sold separately.

Radiant Moisture Replenishing Hand Cream
 100 ml
 107-728-7
 reg. \$7
\$3.99

Bonus-Size Supreme Nourishment Body Lotion
 1 litre
 226-506-2
 reg. \$28
\$19.99
 Pump sold separately.

 <p>Sold separately: Bonus-Size Moisture Therapy Body Lotion Pump 226-602-2 \$3.99</p>	 <p>Bonus-Size Moisture Therapy Intensive Healing & Repair Body Lotion 1 litre 226-456-4 reg. \$28 \$19.99 Pump sold separately.</p>	 <p>Bonus-Size Moisture Therapy Daily Skin Defense Body Lotion 1 litre 226-455-9 reg. \$28 \$19.99 Pump sold separately.</p>	 <p>Bonus-Size Moisture Therapy Calming Relief Body Lotion 1 litre 226-456-6 reg. \$28 \$19.99 Pump sold separately.</p>
---	---	---	---



Skin So Soft Comforting Shea Bath Oil
500 ml
225-567-1
reg. \$34
\$21.99



Skin So Soft Supreme Nourishment Enriching Coconut Oil Wash
350 ml
226-401-7
reg. \$24
\$14.99



 <p>Moisture Therapy Intensive Healing & Repair Extra Strength Cream 150 g 101-614-5 reg. \$12 \$7.99</p>	 <p>Moisture Therapy Balance + Soothe Body Wash 390 ml 222-431-7 reg. \$33 \$25</p>	 <p>Moisture Therapy Balance + Soothe Body Lotion 390 ml 222-431-8 reg. \$35 \$28</p>	 <p>Foot Works Deodorizing Spray 100 g 116-648-6 reg. \$14 \$8.99</p>
---	---	---	---



Véilment Glacial Water Cooling Body Scrub & Cleanser
400 ml
226-060-1
reg. \$21
\$18



Véilment Himalaya Pink Salt Body Scrub & Cleanser
400 ml
226-075-8
reg. \$21
\$18



Véilment Himalaya Pink Salt Exfoliating Soap
150 g
222-462-0
reg. \$12
\$8.50


 <p>Foot Works Overnight Renewing Cream 100 ml 226-456-0 reg. \$13 \$8.99</p>	 <p>Foot Works Deep Moisturizing Cream 75 ml 116-648-2 reg. \$10 \$6.99</p>	 <p>Foot Works Intensive Moisture Foot Cream 75 ml 116-647-9 reg. \$10 \$6.99</p>	 <p>Foot Works Arthritis Achy Foot and Muscle Cream 75 ml 117-059-3 reg. \$10 \$6.99</p>
--	--	--	---



Véilment Black Rose Body Scrub & Cleanser
400 ml
226-075-9
reg. \$21
\$18



Véilment Dead Sea Salt Body Scrub & Cleanser
400 ml
226-076-0
reg. \$21
\$18



Véilment Lumière Sunless Tanning Serum
28 ml
Light/Medium 223-981-7
Medium/Dark 223-982-3
reg. \$34
\$27.99

 <p>Foot Works Intensive Callus Cream 100 ml 226-516-7 reg. \$13 \$8.99</p>	 <p>Foot Works Pedicure Tool 102-612-1 reg. \$16 \$11.99</p>	 <p>Foot Works Pedicure Kit 441-304 reg. \$16 \$11.99</p>
--	---	---



Avon Aromatherapy Body Lotion Bright Day Ahead
171 ml
225-535-8
reg. \$24
\$19.99



Avon Aromatherapy Body Lotion Bye-Bye Stress
171 ml
225-533-1
reg. \$24
\$19.99



Avon Aromatherapy Body Lotion Sleep Tight Zzz
171 ml
225-534-5
reg. \$24
\$19.99

❖ Senses Gratitude
Lavender &
Cedarwood Candle
9 cm H x 8 cm diam.
198.4 g 224-993-4
reg. \$30
\$24.99



Senses Gratitude
Lavender &
Cedarwood
Room Spray
96 ml
226-249-4
reg. \$18
\$14.99



Senses Gratitude
Lavender &
Cedarwood
Air Diffuser
Six diffuser
reeds.
Fragrance oil,
70 ml.
224-993-6
reg. \$40
\$34.99



Senses Gratitude
Lavender &
Cedarwood
Shower Steamers
28 g each
224-994-1 reg. \$35
\$29.99 set of 6



Senses
Blushing
Cherry
Blossom
Hydrating
Shower
Gel
150 ml
225-971-1
reg. \$9
\$5.99



Senses
Silky
Vanilla
Hydrating
Shower
Gel
150 ml
108-470-6
reg. \$9
\$5.99



Senses
Fresh
Cucumber
& Melon
Hydrating
Shower
Gel
150 ml
108-427-5
reg. \$9
\$5.99



Senses
Juicy
Pomegranate
& Mango
Hydrating
Shower Gel
150 ml
108-471-4
reg. \$9
\$5.99



Senses Gratitude
Lavender &
Cedarwood Bath Salts
354 g 224-996-6
reg. \$30
\$24.99



Senses
Sparkling
Grapefruit
& Orange
Blossom
Shower Gel
295 ml
226-511-1
reg. \$24
\$19.99



Senses
Sparkling
Grapefruit
& Orange
Blossom
Body Lotion
236 ml
226-511-0
reg. \$24
\$19.99



Senses
Sparkling
Grapefruit
& Orange
Blossom
Body Mist
236 ml
221-935-5
reg. \$25.50
\$20.99



Senses
Cherry
Blossom
Bubble
Bath
700 ml
109-259-8
reg. \$16
\$9.99



Senses
Vanilla
Cream
Bubble
Bath
700 ml
225-970-7
reg. \$16
\$9.99



Senses
Cucumber
Melon
Bubble
Bath
700 ml
226-404-4
reg. \$16
\$9.99



Senses
Orange &
Honeysuckle
Bubble Bath
700 ml
226-408-6
reg. \$16
\$9.99



Senses
Sparkling
Grapefruit
& Orange
Blossom
Hand Soap
300 ml
222-938-2
reg. \$20
\$14.99



Senses
Sparkling
Grapefruit
& Orange
Blossom
Hand
Cream
75 ml
222-938-5
reg. \$9
\$6.99



Senses
Cozy
Vanilla &
Coconut
Shower
Gel
295 ml
226-509-9
reg. \$24
\$19.99



Senses
Cozy
Vanilla &
Coconut
Body
Lotion
236 ml
221-935-9
reg. \$24
\$19.99



Senses
Soft Pink
Bubble
Bath
700 ml
109-260-2
reg. \$16
\$9.99



Senses
Sensitive
Skin
Bubble
Bath
700 ml
225-970-5
reg. \$16
\$9.99



Senses
Endless
Ocean
Bubble
Bath
700 ml
109-260-1
reg. \$16
\$9.99



Senses
Lily &
Honeysuckle
Blossom
Bubble Bath
700 ml
109-228-8
reg. \$16
\$9.99



Senses Cozy Vanilla
& Coconut Body Scrub
255 g 224-996-8
reg. \$30
\$20.99



Senses
Cozy
Vanilla &
Coconut
Body Mist
236 ml
221-935-8
reg. \$25.50
\$20.99



Senses
Cozy
Vanilla &
Coconut
Hand Soap
300 ml
222-938-4
reg. \$20
\$14.99



Senses
Cozy
Vanilla &
Coconut
Hand
Cream
75 ml
226-452-3
reg. \$9
\$6.99



Senses
Lavender
Garden
Bubble
Bath
700 ml
109-282-3
reg. \$16
\$9.99



Senses
Fresh
Bergamot
& Wild Mint
Hand
Cream
75 ml
222-938-6
reg. \$9
\$6.99



Avon
Shower
Brush
224-951-5
reg. \$14
\$9.99



Exfoliation Mitt
226-176-2
reg. \$15
\$12.50





Skin So Soft Bug Guard Plus Icaridin Insect Repellent Spray I
113 g
453-314
reg. \$25
\$16.99



Skin So Soft Bug Guard Plus Icaridin Insect Repellent Spray II
236 ml
120-437-7
reg. \$28
\$19.99
Pump sold separately.



Sold separately:
Skin So Soft Bug Guard Plus Icaridin Insect Repellent Spray II Pump
for 236 ml
226-602-4
\$3.25



Skin So Soft Bug Guard Plus Icaridin Insect Repellent Towelettes
23 cm L x 14 cm W.
10.9 g
107-390-6
reg. \$22
\$14.99
pack of 8



Skin So Soft Bug Guard Plus Icaridin Insect Repellent Spray II
118 ml
226-030-5
reg. \$18
\$11.99
Pump sold separately.



Sold separately:
Skin So Soft Bug Guard Plus Icaridin Insect Repellent Spray II Pump
for 118 ml
226-602-5
\$2.99



Véilment Care Lip Balm
4.1 g
Strawberry
226-453-1
Cherry
226-452-9
reg. \$3
1.99 each



Moisture Therapy Moisturizing Lip Treatment Balm
4.1 g
Intensive Healing & Repair
226-451-8
Daily Defense
226-451-6
reg. \$3
1.99 each



Skin So Soft Supreme Nourishment Tropical Coconut Lip Balm
4.1 g
222-944-3
reg. \$3
\$1.99



Roll-On Anti-Perspirant Deodorant
75 ml
reg. \$5
\$3.69 each



On Duty Sport
380-309



Avon Microbiome by REACH® Hygiene Deodorant Stick
75 g 224-078-1
reg. \$18
\$14.99



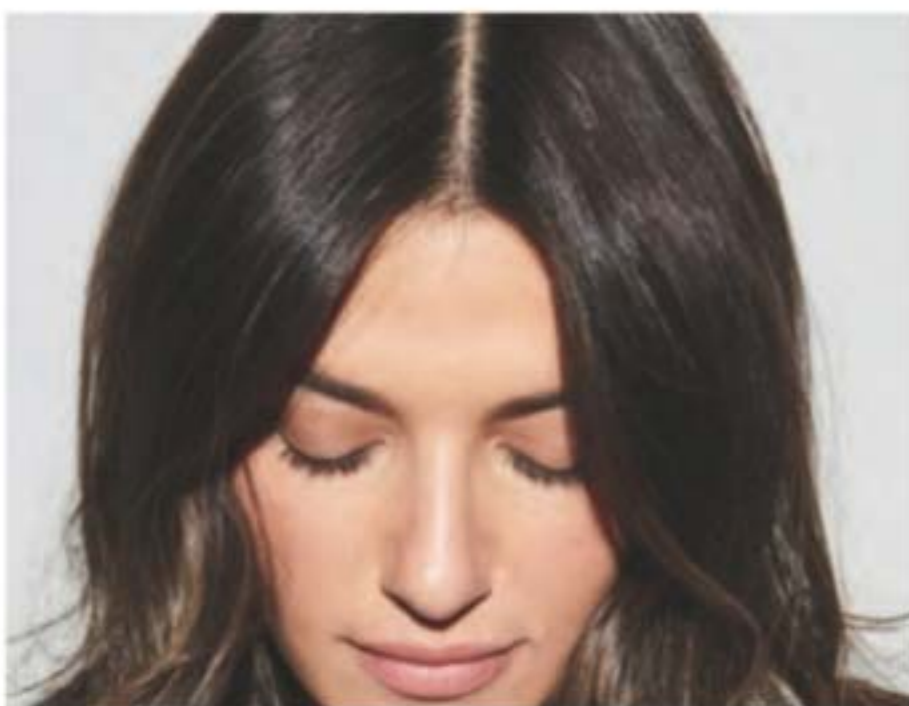
Perfumed Liquid Deodorant
59 ml
298-088
reg. \$9
\$6.50



Avon Care Silicone Glove Protective Hand Cream
100 ml
225-718-6
reg. \$9
\$3.99



Moisture Therapy Intensive Healing & Repair Hand Cream
125 ml
225-617-8
reg. \$9
\$3.99



Root Touch-Up
7 g
reg. \$26
\$22 each

Reddish Brown 222-134-9 Light Brown 222-135-0 Dark Brown 222-135-2 Black 222-135-3



CHI® Essentials Replenishing Shampoo
355 ml
222-707-3
reg. \$28
\$22.50



CHI® Essentials Moisturizing Conditioner
355 ml
222-707-4
reg. \$28
\$22.50



CHI® Essentials Repairing Serum
177 ml
222-707-5
reg. \$46
\$37



CHI® Essentials Revive Keratin + Bonding Restoring Shampoo
355 ml
224-991-6
reg. \$35
\$27.99



CHI® Essentials Revive Keratin + Bonding Restoring Conditioner
355 ml
224-991-7
reg. \$35
\$27.99



CHI® Essentials Revive Keratin + Bonding Protecting Serum
88 ml
224-991-8
reg. \$59
\$48.99



❖ **CHI® Volcanic Lava Ceramic Pro Spin 'n' Curl**
222-338-1
reg. \$210
\$189



❖ **CHI® Advanced Ionic Compact Hair Dryer**
attachments included
222-337-9
reg. \$175
\$159



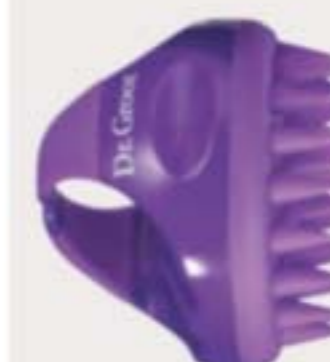
BioSilk® Silk Therapy®
167 ml
222-387-5
reg. \$49
\$39



Dr. Groot Scalp Fortifying Hair-Thickening Shampoo
400 ml
222-566-0
reg. \$49
\$41



Dr. Groot Scalp Fortifying Serum Treatment
200 ml
222-566-2
reg. \$49
\$41



Dr. Groot Premium Scalp Cleansing Brush
223-965-9
reg. \$26
\$21



Elastine Salon de Color Color Vibe Purple Shampoo
250 ml
225-066-9
reg. \$24
\$19.99



Elastine Salon de Color Color Vibe Purple Conditioner
250 ml
225-067-1
reg. \$24
\$19.99



Avon Detangling Comb
226-274-7
reg. \$8
\$6.99



Avon Blow-Dry Round Hairbrush
226-262-3
reg. \$25
\$19.99



Avon Compact Hairbrush
226-262-2
reg. \$14
\$10.99



Avon Detangling Hairbrush
226-262-4
reg. \$18
\$13.99



**Advance Techniques
Daily Shine
2-in-1 Shampoo
& Conditioner**
350 ml 224-986-0
reg. \$15
\$9.99



**Elastine
PropoliThera
Volumizing
Shampoo**
500 ml
222-244-8
reg. \$26
\$22.49



**Elastine
PropoliThera
Volumizing
Conditioner**
500 ml
222-244-9
reg. \$26
\$22.49



**Elastine
PropoliThera
Damage
Repair
Shampoo**
500 ml
226-136-9
reg. \$26
\$22.49



**Advance
Techniques
360 Nourish
with
Moroccan
Argan Oil
Leave-In
Treatment**
60 ml
226-446-0
reg. \$22.50
\$15.49



**Advance
Techniques
Daily Shine
Dry Ends
Serum**
60 ml
226-446-1
reg. \$16
\$11.99



**Elastine
Botanicals
Rosemary
& Sea Salt
Volumizing
Shampoo**
200 ml
225-540-3
reg. \$8
\$6.29



**Elastine
Botanicals
Rosemary
& Sea Salt
Volumizing
Conditioner**
200 ml
225-540-4
reg. \$8
\$6.29



**Elastine
PropoliThera
Damage
Repair
Conditioner**
500 ml
226-137-0
reg. \$26
\$22.49



**Elastine
PropoliThera
Hair Oil
Serum**
170 ml
222-245-4
reg. \$26
\$22.49



**Elastine PropoliThera
Hair Mask**
300 ml 226-137-1
reg. \$26
\$22.49



**Elastine
Botanicals
Cherry
Blossom &
Hyaluronic
Acid
Moisturizing
Shampoo**
200 ml
225-540-0
reg. \$8
\$6.29



**Elastine
Botanicals
Cherry
Blossom &
Hyaluronic
Acid
Moisturizing
Conditioner**
200 ml
225-540-2
reg. \$8
\$6.29



**Elastine
Botanicals
Argan &
Castor
Anti-Frizz
Shampoo**
200 ml
225-509-9
reg. \$8
\$6.29



**Elastine
Botanicals
Argan &
Castor
Anti-Frizz
Conditioner**
200 ml
225-510-6
reg. \$8
\$6.29



**Elastine
PropoliThera
Leave-In
Conditioner**
240 ml
222-551-1
reg. \$27
\$21



**Elastine
PropoliThera
Serum
Treatment**
230 ml
222-627-0
reg. \$31
\$26



**Elastine PropoliThera
Hair Deep Conditioning
Treatment Cap**
226-184-4
reg. \$11
\$9.99



**Elastine
Moisture
Essentials
Volume
Shampoo**
375 ml
224-075-9
reg. \$12.50
\$9.99



**Elastine
Moisture
Essentials
Volume
Conditioner**
375 ml
224-076-0
reg. \$12.50
\$9.99



**Elastine
Moisture
Essentials
Shine
Shampoo**
375 ml
224-076-1
reg. \$12.50
\$9.99



**Elastine
Moisture
Essentials
Shine
Conditioner**
375 ml
224-076-2
reg. \$12.50
\$9.99



**Elastine
PropoliThera
Aloe
Dual-Active
Hair Serum**
100 ml
222-551-2
reg. \$42
\$35



**Elastine
HempharmX
Weightless
Hydration
Shampoo**
400 ml
222-687-3
reg. \$34
\$28



**Elastine
HempharmX
Weightless
Hydration
Conditioner**
400 ml
222-687-4
reg. \$34
\$28

HEART TO HEART



ONLY
\$9.99

WITH ANY \$15
BROCHURE PURCHASE*

**Stainless Steel
Valentine's Two-Pair Earring Pack**

Two pairs of stainless steel studs with cz's, 1 cm L.
1-carat total weight equivalent. Pierced. Comes in a
gift box. **226-489-9**

\$13.99 if purchased separately

LIMITED QUANTITIES.

*Stainless Steel Valentine's Two-Pair Earring Pack purchase does not qualify
toward this or any other offer and is available in this Brochure only.

Enjoy special prices and offers with an Avon account or Representative.

CAMPAIGN 2, 2024

5500 TRANS-CANADA HWY.
POINTE CLAIRE, QUEBEC
H9R 1B6

1-800-265-2866

avon.ca



Brochure effective until _____



See our commitment at
avongivesback.ca

RETURN POLICY If you are not satisfied, return any item within 45 days. View Avon's full 45-Day Return Policy at avon.ca.