

AVON

CAMPAIGN 5
AVON.CA



Simple pleasures
to rejuvenate
**BODY
& SOUL**
FIND YOUR JOY!



FIND YOUR CALM

SCENTED OILS HELP YOU RELAX WHILE NOURISHING YOUR SKIN.

SPICY FLORAL SCENT



WARM SCENT OF VANILLA, SANDALWOOD AND MUSK



FRESH HERBAL SCENT



Skin So Soft Bath Oil
Locks in hydration after a bath or shower for amazingly soft skin. 500 ml

Soft & Sensual
107-743-7

Comforting Shea
121-648-7

Original
107-681-3
reg. 34.00

LIMITED TIME OFFER
17.99 EACH

Upgrade your SHOWER ROUTINE

BONUS SIZE FORMULAS SOFTEN & CONDITION
SKIN WITH LUXURIOUS OILS.

**Skin So Soft
Bonus Size
Body Lotion**
Provides
24+ hours of
moisturization.
1 litre

**Original
107-765-7**

**Radiant Moisture
107-765-8**

**Supreme
Nourishment
107-766-0**

**Soft & Sensual
107-765-9**

reg. 28.00

17.99 EACH

1 LITRE
BONUS SIZE
BODY
LOTIONS



1 LITRE
BONUS SIZE
SHOWER
GELS



**Skin So Soft
Bonus Size Shower Gel**
Hydrate and cleanse
with a rich, creamy lather. 1 litre



**Soft & Sensual
220-839-9**

**Original
220-839-8**

**Radiant Moisture
220-840-0**

reg. 21.00

17.99 EACH

BUBBLES MAKE EVERYTHING BETTER

BALANCE YOUR MIND, HEIGHTEN YOUR SENSES AND RELAX WITH A SERENE BLEND OF SHEER BERGAMOT, JASMINE AND SANDALWOOD.



BONUS SIZE
700 ML

✦ **Tranquil Moments
Relaxation Foam Bath**
Linger in a tub full
of softly scented
bubbles. 700 ml
232-501
20.00 or...

**ONLY
7.99**

**WITH EVERY 10.00
PURCHASE FROM
THIS BROCHURE**

(excluding page 7)

Do not disturb, HAVING A SENSES MOMENT

Bubble Bath

Up to 24 bubbly baths per bottle.
Dermatologically-tested. Each, 700 ml

Vanilla Cream
109-259-5

Soft Pink
109-260-2

Cucumber & Melon
109-260-3

Frosted
Winterberry
109-259-6

Sensitive Skin
109-282-4

Cherry
Blossom
109-259-8

Endless Ocean
109-260-1

Lily & Honeysuckle
Blossom
109-228-8

Orange
& Honeysuckle
109-259-7

reg. 16.00

9.99 EACH



Lavender Garden
109-282-3



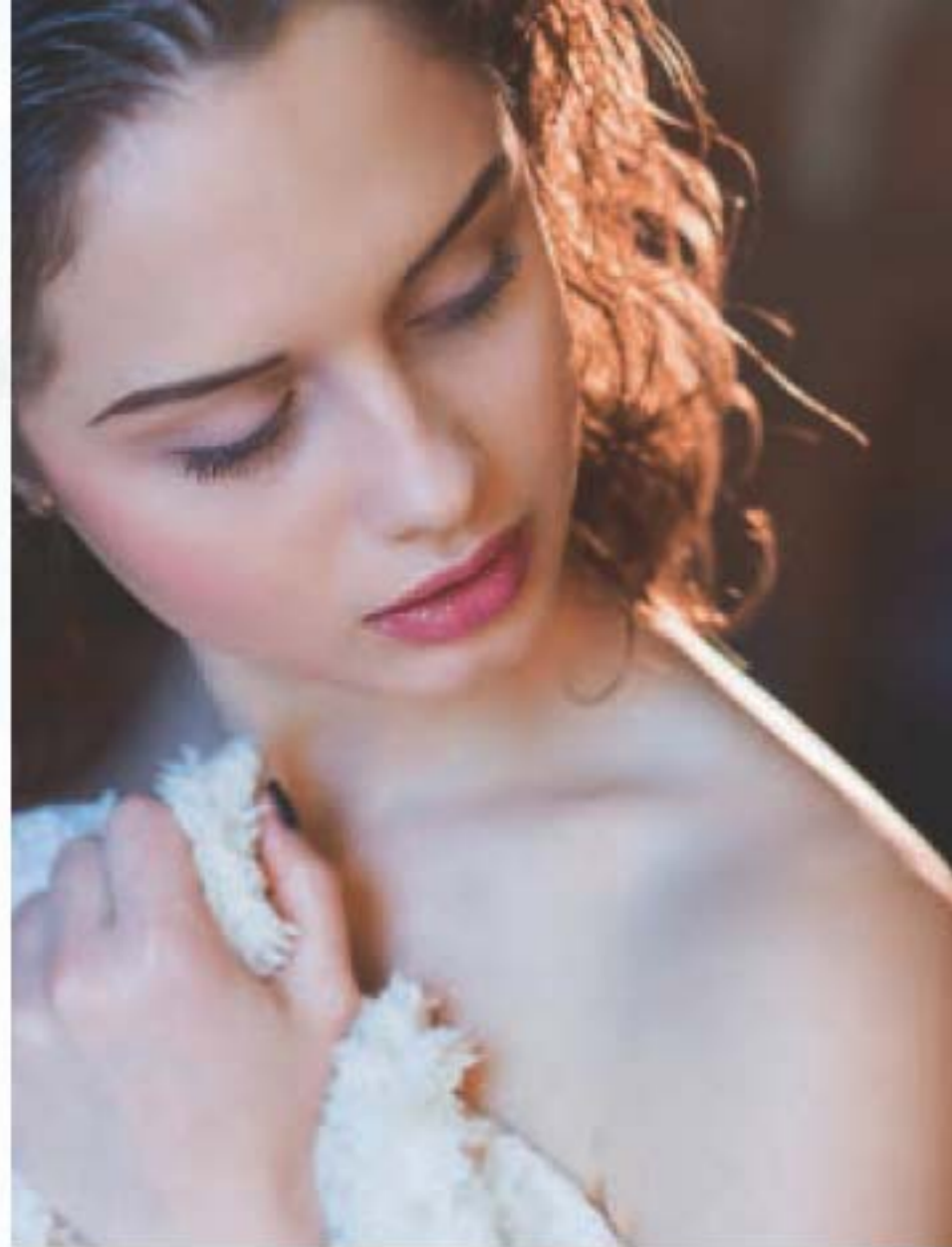
CALMING RELIEF

WITH SKIN-NOURISHING
MOISTURE YOUR SKIN DESERVES.



**Moisture Therapy
Calming Relief Bonus
Size Body Lotion**
Dermatologist-tested.
Hypoallergenic.
Suitable for sensitive
skin. Fragrance-free.
1 litre **102-011-8**
reg. 28.00

**LIMITED
TIME OFFER
14.99**



DETOXIFY SKIN

WITH NATURAL SPA INGREDIENTS SOURCED FROM AROUND THE GLOBE.



Veilment Natural Spa Black Rose Body Essence
 Infused with French rose oil and brightening ceramide. French rose and black currant scent. 400 ml **222-462-1**
 reg. 35.00
28.00



Veilment Natural Spa Himalaya Pink Salt Exfoliating Soap
 Mineral-rich Himalayan pink salt, walnut shell, apricot seed and cranberry powder. Sage scent. 150 g **222-462-0**
 reg. 12.00
8.50



Veilment Natural Spa Bamboo Charcoal Exfoliating Soap
 Daily body scrub and cleansing bar, with Korean bamboo charcoal, walnut shell, apricot seed and cranberry powder. 150 g **222-461-8**
 reg. 12.00
8.50



Veilment Natural Spa Dead Sea Mud Body Scrub & Cleanser
 Non-drying. Jasmine scent. 400 ml **222-462-2**
 reg. 33.00
25.00

Veilment Natural Spa Bamboo Charcoal Body Scrub & Cleanser
 A gentle scrub and wash with Korean bamboo charcoal, Israeli Dead Sea salt, apricot seed and spruce. 400 ml **222-443-6**
 reg. 33.00
25.00

enriched with Korean bamboo charcoal and other natural exfoliants



FIND YOUR BALANCE

WITH GENTLE PLANT-BASED CLEANSERS.

Formulated with **ultra-nourishing hemp seed oil**, a naturally derived oil enriched with omega-3-6-9 fatty acids and vitamin E to naturally nourish, hydrate and soften as it cleanses, for the look of healthy radiance.



NO MINERAL OIL,
PARABENS
OR TRICLOSAN.

A. Veilment Hemp Seed Oil Ultra-Nourishing Bathing Bar

Gently cleanses without stripping skin's moisture. Leaves skin feeling refreshed and soft. 90 g
222-338-7
reg. 7.00
6.00

B. Veilment Hemp Seed Oil Ultra-Nourishing Shower Shake

Dual-phase formula infused with hemp seed oil and gentle cleansers. Shake before use. 300 ml
222-338-5
reg. 33.00
25.00

C. Veilment Hemp Seed Oil Ultra-Nourishing Dry Body Oil

Light, easily absorbed oil helps relieve dry skin. Fragrance-free. Dermatologist-tested. Hypoallergenic.
150 ml **222-338-6**
reg. 49.00
40.00





**COMFORT STRESSED
OUT SKIN** HEMP-DERIVED FACIAL OIL
NOURISHES, BALANCES
AND SOOTHES FOR CALM,
HAPPY AND RADIANT SKIN.

FACIAL OIL NURTURES SKIN

Contains naturally-derived ingredients such as cannabis sativa seed, grapeseed and jojoba seed oils, rich in omega fatty acids and vitamin E to relieve skin discomfort and redness due to dryness.



BEAUTIFUL BENEFITS:

- lightweight
- absorbs easily
- suitable for sensitive skin
- vegan
- paraben/gluten-free
- non-comedogenic
- hypoallergenic

✦ Cannabis Sativa Seed Infused Facial Oil

Use AM/PM, after cleansing. If using serum(s) and/or moisturizer, use oil as last step of routine. 30 ml
222-267-5
40.00 or...

**ONLY
22.99**

**WITH EVERY 15.00
PURCHASE FROM
THIS BROCHURE**

(EXCLUDING PAGES 16-17)

NEW

❖ **LYRD Candles**
11 cm diam. x 8 cm
H. Glass/paper/soy
blend wax. 312 g
reg. 35.00
28.00 EACH

Rose Blossom & Musk
Pink peony, sophisticated
rose blossom and soft
musk. **222-910-2**

L Y R D
layers redefined



Juicy Currant & Magnolia
Juicy currant, sweet
rhubarb and blooming
magnolia. **222-910-1**

Never leave burning candles unattended.
Keep away from children and pets.

**With soy-blend wax
for a cleaner burn!**

Make your home even more welcoming
with new unique fine fragrance candles,
crafted by expert perfumers.

Violet & Birch
Delicate violet, crisp
birch and warm vanilla.
222-910-3



**EACH 3-WICK CANDLE GIVES
30 HOURS OF BURN TIME!**

NEW! LIMITED EDITION

Find your heart, find your keys



✦ Lock Me In Love Key Chain

Goldtone keyring or purse charm with faux leather heart, embellished with red and gold rhinestones and red tassel. Lobster-claw clasp. Iron chain. 7 cm W x 6 cm H. 15 cm total length.

222-737-5
20.00 or...

**ONLY
8.99**

with every 15.00 purchase from pages 21-25.

NEW! LIMITED EDITION



FMG 'True' Love At First Lash Mascara in Velvet Mulberry

It's back! Richly pigmented, sumptuous dark-red, mulberry-black shade adds luscious depth and mystery to lashes. 9 ml **222-711-9**
reg. 19.00
14.99

FMG 'True' Love Cushion Blush & Highlighter Set

Great duo set with blush and highlighter. Comes with one sleek red compact and two separate cushion cartridges to pop in and out. Includes Colors of Love Kiss Me Cushion Blush in Sweet Pea and Highlighter in Golden Lily. Comes in gift box. Each cushion, 8 g

222-712-1
reg. 55.00
45.00 the set

FMG 'True' Love Multi Palette

Four lustrous shades in a creamy, smooth long-wearing powder for cheeks and eyes. Silky skin-hugging texture. Includes brush applicator. Comes in gift box. 4.2 g total.

222-712-0
reg. 48.00
38.00



Velvet
Mulberry



Face it...
you're fabulous

NEW! LIMITED EDITION

Isa Knox Anew Ultimate LX LuxLovin' Set

Discover the age-defying benefits of peanokol with a day cream infused with nutmeg for a visibly even tone and a ceramide-enriched serum to keep skin looking firm and smooth. Must-have minis plus one full-size cream. Includes:

- Rejuvenating Day Cream, 50 ml
- Mini Rejuvenating Day Cream, 15 ml
- Mini Rejuvenating Serum, 7 ml

222-707-1

reg. 105.00

56.00 THE SET



Anew Vitamin C Vitamin Me Brighten Me Gift Set

Get glowing with a daily dose of vitamin C for plumped, kissable lips and naturally radiant, hydrated skin. Includes three full-size favourites:

- Antioxidant Lip Treatment, 3.8 g
- Illuminating Priming Moisturizer, 50 ml
- Brightening Serum, 30 ml

222-712-3

reg. 130.00

64.99

THE SET



ONLY 8.99

with every 15.00 purchase from pages 21-25.

Details, page 20.

NEW! LIMITED EDITION

❖ **Enlighten Me Tonight
Votive Candle**

Set the mood with votive candles in your favourite classic Avon scents! Each 1-wick 63 g candle gives 3 hours of burn time. 6 cm W x 6 cm H. Glass/paper/soy-blend wax. Comes in a sweet gift box.

Haiku **222-714-6**
Black Suede **222-941-6**
Rare Pearls **222-943-8**
reg. 21.00

17.00 EACH

Never leave burning candles unattended.
Keep away from children and pets.



Your latest
flame



ONLY 8.99

with every 15.00 purchase
from pages 21-25.
Details, page 20.

NEW! LIMITED EDITION

**Studio 1886
Techtopian Gift Set**

Blurring the lines between the virtual and natural world, this electrifying fragrance looks to the future with notes of magnolia, white rose and warm musk. Comes in a sweet gift box.

2-piece gift set includes:

- Eau de Parfum, 50 ml
- Perfumed Body Lotion, 200 ml

223-057-1
reg. 98.00

72.00 THE SET





THE MAGIC WAND THAT DOES IT ALL!

Water-resistant formula conceals, contours and highlights.

MAGIX



Model is wearing Magix Wand Foundation Stick in Praline.



Meringue 221-386-6	Marshmallow 221-386-7	Coconut 221-386-8	Vanilla 221-386-9	Macadamia 221-387-0	Chai 221-387-1
Toasty 221-395-0	Cappuccino 221-395-1	Tiramisu 221-395-2	Praline 221-395-3	Amaretto 221-395-4	Latte 221-395-5
Hazelnut 221-395-6	Cognac 221-395-7	Pecan 221-395-9	Truffle 221-395-8		

GET THE LOOK

 @MyAvonCanada

✦ Wand Foundation Stick

Your go-everywhere multitasking foundation stick. Buildable sheer-to-full coverage and a demi-matte finish. Infused with shea butter and antioxidant vitamin E. Paraben/sulfate/phthalate-free. Vegan. 6 g
23.00 or...

FIND YOUR PERFECT SHADE AT AVONMAGIXMATCH.CA

ONLY 9.99
 WITH EVERY 15.00
 PURCHASE FROM
 THIS BROCHURE

(excluding Magix Wand
 Foundation Stick)



**FINISHING POWDER
WITH ANTIOXIDANT GREEN
TEA EXTRACT ENHANCES
AND SMOOTHS SKIN**

**SPF
20**

**COLOURLESS PRIMER
SUITABLE FOR
ALL SKIN TONES**

**Magix Prime Face Perfector
SPF 20 Sunscreen**

Oil-free primer instantly blurs for a pore-free, shine-free and line-free complexion. Sheer coverage and a soft-focus matte finish. Paraben/sulfate/talc-free. Vegan. 30 ml
221-300-9
 reg. 20.00
15.99

**ILLUMINATING TINTED
MOISTURIZER BRIGHTENS
SKIN WHILE BLURRING
IMPERFECTIONS**

FIND YOUR PERFECT SHADE AT AVONMAGIXMATCH.CA



**Magix Tint Brightening
Tinted Moisturizer**

Lightweight formula evens skin tone, boosts moisture and softens flaws. Sheer coverage. Naturally radiant finish. Paraben/sulfate/talc-free. Vegan. 30 ml
 reg. 20.00
15.99



Fair 221-296-0 Light 221-296-1 Light Medium 221-296-2



Medium 221-296-7 Medium Deep 221-296-9 Deep 221-297-0



@MyAvonCanada

Magix Dust Finishing Powder

Lightweight mineral powder formula diffuses light, blurs the look of pores, controls shine and blends effortlessly, creating a silky feel with a naturally glowing soft matte finish. Zero flashback. No-spill, twist-and-lock sifter for no-mess application. Paraben/sulfate/talc-free. 6 g
 reg. 24.00
19.99



Translucent Fair-Light 221-721-7 Translucent Medium-Deep 221-851-5

CASHMERE COMPLEXION

Cushiony doe-foot applicator for easy, precise application.



Cannoli (W) 221-448-3	Nougat (W) 221-448-4	Meringue (W) 221-448-5	Shortcake (C) 221-448-6	Buttercream (N) 221-448-7	Marshmallow (N) 221-448-8	Custard (N) 221-448-9	Strudel (C) 221-449-0
Macadamia (W) 221-449-2	Ganache (WO) 221-449-4	Coconut (W) 221-449-1	Cappuccino (N) 221-449-5	Chai (WO) 221-449-3	Vanilla (W) 221-450-0	Toasty (N) 221-449-7	Praline (N) 221-449-9
Tiramisu (W) 221-449-6	Soufflé (N) 221-449-8	Muffin (W) 221-450-1	Gingerbread (C) 221-450-2	Pudding (N) 221-450-3	Amaretto (N) 221-450-4	Latte (W) 221-450-6	Brownie (WO) 221-450-5
Hazelnut (W) 221-450-7	Cognac (W) 221-450-8	Pecan (N) 221-450-9	Java (W) 221-451-0	Clove (N) 221-451-1	Truffle (C) 221-451-2	Available in: Cool (C), Neutral (N), Warm (W) and Warm Olive (WO) undertones.	

Longwear Foundation

24 hours of comfortable, breathable wear. Full, versatile coverage with a matte finish. Blurs pores and fine lines for a smoother complexion. With antioxidant botanical extracts. Ideal for all skin types. Vegan. 30 ml
reg. 42.00
32.00



@MyAvonCanada

Longwear Concealer

24 hours of comfortable, breathable wear. Creamy lightweight texture. Corrects dark circles and imperfections. Soft focus matte finish. With antioxidant botanical extracts. Vegan. 6 ml
reg. 31.00
23.00

Sugar (W) 221-452-3	Mochi (N) 221-452-4	Cheesecake (C) 221-452-5	Parfait (W) 221-452-6	Macaroon (N) 221-452-7	Tart (WO) 221-452-8
Butterscotch (W) 221-452-9	Waffle (W) 221-453-0	Biscuit (WO) 221-453-5	Tres Leches (N) 221-453-6	Toffee (W) 221-454-0	Cupcake (N) 221-454-8

Available in: Cool (C), Neutral (N), Warm (W) and Warm Olive (WO) undertones.



Tres Leches

POWDER-SOFT CASHMERE

FMG Cashmere Complexion Compact Powder Foundation

Luxuriously soft weightless formula with a long-lasting matte finish. Use as foundation or setting powder for buildable medium-to-full coverage. Amino-acid coated pigments control shine and visibly smooth skin for perfected, all-day wear. With vegan collagen, lavender oil, artichoke and chamomile extracts. Mirror compact and sponge for seamless touch-ups. 9.5 g
reg. 52.00
42.00

N110 (N) 222-137-5	N120 (N) 222-137-9	W160 (W) 222-138-3	N150 (N) 222-138-7
W110 (W) 222-137-6	W130 (W) 222-138-0	N130 (N) 222-138-4	W180 (W) 222-138-8
W120 (W) 222-137-7	W140 (W) 222-138-2	N140 (N) 222-138-5	N160 (N) 222-138-9
C110 (C) 222-137-8	W150 (W) 222-138-1	W170 (W) 222-138-6	C120 (C) 222-139-0

Available in Cool (C), Neutral (N) and Warm (W) undertones.



Model is wearing FMG Cashmere Complexion Compact Powder Foundation in N120.



Model is wearing
FMG Colors of Love
Kiss Me Cushion Blush
in Orchid Kiss and Cushion
Highlighter in Fairy Dahlia.

GET A DREAMY WATERCOLOUR LOOK IN A SINGLE SWEEP.

BEAUTIFUL BENEFITS:

- skin-loving colour
- water-based formulas
- infused with hyaluronic acid to instantly hydrate and plump skin
- formulated with antioxidant non-GMO water lily and green tea extracts to leave skin feeling silky and nourished

BLUSH

Dewy, natural flush of colour.



Orchid Kiss 222-264-0 Midnight Lily 222-264-1 Sweet Pea 222-263-8 Queen Carnation 222-263-9

HIGHLIGHTER

Luminous pearlescent finish.



Fairy Dahlia 222-413-5 Golden Lily 222-414-4

FMG Colors of Love Kiss Me Cushion
Buildable sheer-to-medium coverage. Includes sponge applicator and mirror. 8 g reg. 38.00

LIMITED TIME OFFER
24.99 EACH

LIPS

**MOISTURIZING FORMULA
RICH IN NON-GMO SHEA
BUTTER COMPLEMENTS
ALL SKIN TONES!**



Model is wearing Birthday Balm Lip Crayon in Lovin' Life.



Lovin' Life

Birthday Balm Lip Crayon
Portable, sheer moisturizing lip crayon with a delicate shine finish. Perfect for touch-ups and never needs to be sharpened. Free of mineral oil. Paraben/phthalate/gluten-free. 2.7 g
reg. 17.00
13.99

		
Lovin' Life 222-022-6	Birthday Suit 222-023-2	PYT 222-022-9
		
Surprise! 222-023-5	Birthday Post 222-024-3	Fine Wine 222-024-0

**BUTTER-SOFT BALM
WITH A SHEER HINT
OF COLOUR AND SHINE
FOR YOUR BEST
NUDE LIP EVER.**

LIPS

Extra Lasting Lipstick
Won't feather or fade. Keeps lips from feeling dry. Satin finish. 3 g

12.00 or...
LAST TIME IN BROCHURE
WHILE SUPPLIES LAST



Forever Burgundy 447-544
Fiery Red 447-538

Avon True Color Nourishing Lipstick
Keeps lips nourished and conditioned even after you take it off. Satin finish. 3 g

14.00 or...
LAST TIME IN BROCHURE
WHILE SUPPLIES LAST



Peony Blush 115-742-2
Roasted Chestnut 220-901-0
Toasted Cashew 220-901-1
Dragonfruit Blush 220-901-4
Delicate Date 220-902-1
Mellow Melon 115-742-8
Candy Red 115-742-9



Sparkling Rose 220-901-6
Black Cherry 220-901-8
Persimmon Pink 220-901-9
Spring Lilac 115-742-5
Brown Sugar 115-742-7
Lychee Pink 220-900-9

Avon True Color Lipstick
Full coverage, moisturizing lip colour in shimmer and satin finishes. 3 g

14.00 or...
LAST TIME IN BROCHURE
WHILE SUPPLIES LAST



SHIMMER Cozy Mauve 109-736-8
SHIMMER Golden Berry 109-736-7
SHIMMER Sparkling Mauve 109-737-2
SHIMMER Bronze Treasure 109-740-1
SHIMMER Twinkle Pink 109-740-5
SHIMMER Sparkling Nude 109-741-1



SHIMMER Iced Cocoa 109-741-6
SHIMMER Frostiest Mauve 109-741-8
SATIN Buttered Rum 109-736-3
SHIMMER Country Rose 109-740-6
SATIN Wine with Everything 109-741-3
SATIN Wineberry 109-736-5



SATIN Toasted Rose 109-740-8
SATIN Vamp 109-741-5
SATIN Cherry Jubilee 109-741-7

GIVE LIPS SOME TLC

INFUSED WITH MARINE COLLAGEN AND JOJOBA OIL TO NOURISH, PLUMP AND SOFTEN LIPS AND FINE LINES.

FORMULATED WITH SHEA BUTTER, OMEGA-6, SUNFLOWER SEED OIL AND VITAMIN E.

Avon True Color Nourishing Lipstick in Persimmon Pink

Avon True Color Lipstick in Toasted Rose



Extra Lasting Lipstick in Fiery Red

FORMULATED WITH COLORLOCK COMPLEX, VITAMIN E AND WHEAT PROTEIN.

MIX OR MATCH
CHOOSE ANY
2 FOR 14.99
PAGES 36-37

To get the 2 FOR price, please order in multiples of 2.

LIPS

DUAL-ENDED LIP STAIN WITH ALL-DAY WEIGHTLESS WEAR.

**2-in-1 Lip Tattoo
Lip Line & Fill Duo**

Infused with sunflower seed oil to help hydrate lips. Paraben/gluten/phthalate/sulfate-free. Vegan. 1.6 ml
reg. 18.00
12.99



**Mattitude
Soft Matte Liquid Lip**

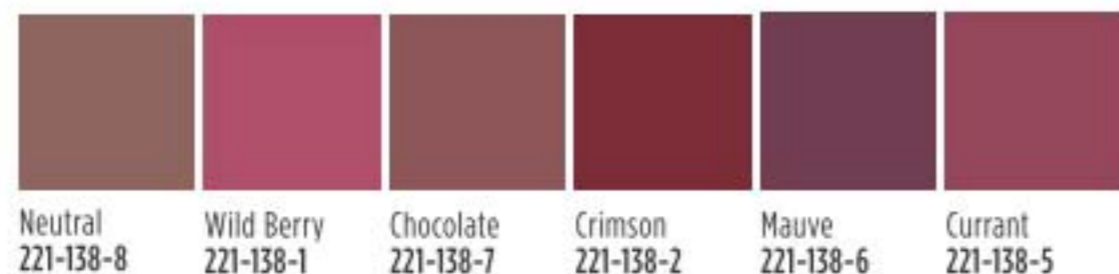
Weightless, non-drying formula that lasts for hours. Poppy seed oil and vitamin E nourish and smooth lips. Paraben/sulfate/phthalate-free. 4 ml
reg. 18.00
12.99



@MyAvonCanada



Ultra Luxury Lip Liner
Won't tug or pull. 1.14 g
reg. 9.00
4.79



LIPS



LIGHTWEIGHT, SOFT AND COMFORTABLE FORMULA CARESSES LIPS IN LUXURY WITH RICH VIVID PIGMENTS FOR HOURS OF KISSABLE WEAR.

SATIN (S) OR MATTE (M) FINISH



FMG Cashmere Lipcream
Infused with antioxidant vitamins C and E, shea butter, avocado, and coconut oils to nourish and soften lips. **Satin finish (S) in traditional case and matte finish (M) in chic slimline case.** Each, 3.5 g
reg. 32.00
26.00

LIPS



FMG Ink High-Gloss Lacquer
Get a polished shine, instant hydration and visibly plump lips with essential oils and intense vivid colour. Formulated with 7 nourishing essential oils: sweet almond, borage seed, calendula, chamomile flower, lavender, rose flower and rosemary leaf oil. 5 g
reg. 30.00
24.00

Coral Moment 222-469-6	Plum Candy 222-470-0	Red Symphony 222-469-9
Pink of Me 222-469-8	Rose Happening 222-469-7	Frozen Beige 222-469-5

Avon Crave Lip Gloss
Vitamin E formula moisturizes, smooths and softens lips. Soft pearl finish. 9 ml
reg. 12.00
6.99

Cucumber Spritzer 221-134-7	Minted Apple 221-135-1	Honey Tea 221-134-6	Birthday Cake 221-135-2
Citrus Sangria 221-135-5	Peach Bellini 221-135-6	French Toast 221-134-8	Cherry Creamside 221-135-0
Strawberry Glaze 221-135-4	Pumpkin Latte 221-135-3	Chocolate Brownie 221-134-9	Salted Caramel 221-135-7



Model is wearing Avon Crave Lip Gloss in Birthday Cake



POMEGRANATE EXTRACT
Superfruit anti-ager!



JOJOBA OIL
Known to help smooth and moisturize lips.



COLLAGEN
Protein known to help plump lips and reduce fine lines.



CAFFEINE
Known to fight free radicals to help smooth and firm lips.



MAKEUP

Dual-plumping formula leaves lips looking plumper, firmer and more supple.



SPF 15
PROTECTS AGAINST SUN DAMAGE AND DRYNESS

Beyond Color Lip Conditioner SPF 15
Wear it alone or under your favourite lip colour for beautifully conditioned lips. Smooth, colourless finish. 3 g
104-150-3
reg. 14.00

LIMITED TIME OFFER
7.99



Model is wearing FMG Ink High-Gloss Lacquer in Rose Happening (page 40) and Avon True Color Glimmersticks Lip Liner in Pink Bouquet.

BOLD, INTENSIFIED COLOUR STAYS PUT ALL DAY LONG.



Electric Plum 220-891-4	Merlot 220-891-3	Pomegranate 220-891-6	Au Naturel 220-891-7	Simply Spice 109-977-3	Chocolate 109-976-9	Mystery Mauve 109-977-6	Pink Bouquet 109-977-5	Red Brick 110-516-3	Perfect Plum 109-977-7
----------------------------	---------------------	--------------------------	-------------------------	---------------------------	------------------------	----------------------------	---------------------------	------------------------	---------------------------



DRAW ATTENTION WITH A LIP LINER THAT LINES, DEFINES AND ENHANCES A PERFECTLY KISSABLE POUT.

Avon True Color Glimmersticks Lip Liner
Prevents lipstick from feathering. Soft, creamy shades with full coverage and a matte finish. Retractable and self-sharpening. 0.28 g
13.00 or...

**MIX OR MATCH
CHOOSE ANY
3 FOR 10.99
PAGES 42-45**

To get the 3 FOR price, please order in multiples of 3.





GLIDE-ON COLOUR THAT LASTS.

Model is wearing Avon True Color Glimmersticks Eye Liner in Blackest Night, Brow Liner in Brunette and FMG Cashmere Lipcream Matte Finish in Soft Crimson (page 39).

BROW DEFINER



Light Blonde 110-663-1
Blonde 112-304-1
Tawny 112-304-2
Light Brown 112-304-5
Dark Brown 112-304-3
Brunette 112-304-6

EYELINER



DIAMONDS Olive 220-897-8
DIAMONDS 24 Karat 220-898-2
DIAMONDS Sterling 220-898-0
DIAMONDS Sepia 220-897-9



DIAMONDS Twilight Sparkle 110-766-6
DIAMONDS Brown Sugar 110-766-7
DIAMONDS Sugar Plum 110-766-5
DIAMONDS Teal Sparkle 110-767-0
DIAMONDS Smoky Diamond 110-766-8
DIAMONDS Black Ice 110-766-9
DIAMONDS Purple Rain 220-898-1
CREAM Majestic Plum 111-784-4
CREAM Blackest Black 111-785-0
CREAM Saturn Grey 111-784-5
CREAM Emerald 111-784-8



CREAM Starry Night Blue 111-784-6
CREAM Cosmic Brown 111-784-7
CREAM Blackened Green 111-784-9
CREAM White Awake 220-896-4
WATERPROOF Toasted 220-897-0
WATERPROOF Raisin 220-896-9
WATERPROOF Brown Chocolate 110-662-8
WATERPROOF Midnight Blue 110-663-0
WATERPROOF Smoky Grey 110-662-9
WATERPROOF Blackest Night 110-662-7



BRIGHTEN YOUR LOOK WITH EYE OPENING LINERS THAT DEFINE WITH PERFECT PRECISION.

Avon True Color Glimmersticks for Eyes and Brows

Creamy, smooth colour. Doesn't pull or tug. Retractable and self-sharpening. 0.28 g

13.00 or...

**MIX OR MATCH
CHOOSE ANY
3 FOR 10.99
PAGES 42-45**

To get the 3 FOR price, please order in multiples of 3.



LIPS

SHINE BRIGHT

Drench lips in vivid sparkling colour in a single bold stroke!

Glimmerkiss Liquid Lipstick

Go for a subtle shimmer to all-the-way bold metallic. Water-resistant. Wear alone or as a topper in centre of lips to transform lips and instantly add depth and sparkle. Paraben/phthalate/sulfate-free. 2 ml reg. 20.00 **13.99**



Ruby



Sand Opal 221-839-7 Ruby 221-840-1 Amethyst 221-840-0 Violet Sapphire 221-839-8

Model is wearing FMG Glimmershadow Liquid Eyeshadow in Fool's Gold and Glimmerkiss Liquid Lipstick in Ruby.



EYES

FMG Glimmershadow Liquid Eyeshadow

Buildable formula with no messy fallout. Blends easily and dries down smoothly. Water-resistant. Paraben/phthalate/sulfate-free. 2 ml reg. 14.00 **9.99**

AVAILABLE IN 3 ULTRA-FINE PEARL FINISHES: VELVET SATEEN, GLITTER OR SHIMMER.

Package labels may vary.

FOR EYES



VELVET SATEEN Tiger's Eye 222-434-8 VELVET SATEEN Sunstone 222-434-3 VELVET SATEEN Moonstone 222-434-4



VELVET SATEEN Citrine 222-434-6 VELVET SATEEN Jasper 222-434-7 VELVET SATEEN Pink Sapphire 222-434-5



SHIMMER Bronze Age 221-139-9 SHIMMER Rose Gold 221-139-8 SHIMMER Pink Topaz 221-851-3



SHIMMER Iron Violet 221-139-5 SHIMMER Crystal Lilac 221-851-1 GLITTER Peach Sapphire 221-139-4



GLITTER Fool's Gold 221-139-6 GLITTER Ultramarine 221-138-9 GLITTER Diamond Dust 221-850-2



Pink Sapphire

Bronze Age

FOR LIPS

Sand Opal



Iron Violet

DRAW THE LINE.



HOURS OF WEAR.

Ultra Luxury Eye Liner
Won't tug or pull. 1.14 g
reg. 9.00
4.79



Emerald 221-138-0 Eggplant 221-137-9 Sky Blue 221-137-8 Dark Brown 221-077-3 Black 221-077-4



BONUS! BUILT IN SHARPENER.

Avon True Color Always On Point Eyeliner
0.31 g
reg. 13.00
8.99



Black Brown 111-787-2 Black 111-787-1



CALLIGRAPHY TIP FOR ULTIMATE CONTROL.

Mega Effects Liquid Eyeliner
1 ml
reg. 13.00
7.99



Black 100-844-2



ULTRA FINE AND SUPER SLEEK.

Avon True Color Super Extend Precise Liquid Pen
1 ml
reg. 13.00
9.99



Black 220-000-5 Brown Suede 119-681-2
LAST TIME IN BROCHURE WHILE SUPPLIES LAST



Avon True Color Love at 1st Lash Mascara
9 ml
Blackest Black
220-247-9
reg. 21.00
14.99



WATERPROOF FORMULA

Love at 1st Lash Waterproof Mascara
8.5 ml
Blackest Black
222-014-9
reg. 21.00
14.99



Big & Multiplied Volume Mascara
10 ml
Blackest Black
107-521-1
reg. 14.00
10.99
LAST TIME IN BROCHURE WHILE SUPPLIES LAST



Avon True Color Super Shock Volumizing Mascara
10 ml
Black 110-323-2
reg. 14.00
10.99



Avon True Color Super Extend Nourishing Mascara
7 ml
Black 113-543-7
Brown Black 113-543-8
reg. 14.00
10.99

BROWS



Hi-Brow Sculpting Gel
24 hours of stay-put brows. With oil-controlling clay, conditioning kiwi extract and vitamin E. Tapered micro-brush ensures precise application. 3.7 ml
reg. 24.00
18.99



Hours of wear.

Ultra Luxury Brow Liner
Won't tug or pull. 1.14 g
reg. 9.00
4.79



3-in-1 Pencil Sharpener
220-085-7
reg. 9.00
5.49



For all types of pencils and sizes.



Dual-ended brush with high-quality bristles.

Avon Pro Brow Brush
Nylon bristles. 16 cm L.
450-156
reg. 13.00
7.99

TOOLS

IT'S BACK!

Avon Beauty Caddy
Folds up for easy storage. Removable inside dividers and handy outside pockets. Lattice-design elastic straps are perfect for makeup brushes. 25 cm L x 14 cm W x 13 cm H. Polyester/PVC.
222-518-5
reg. 25.00
18.99

Contents not included.



A. Powder Brush
Natural bristles. Applies powder or bronzer seamlessly all over the face. 19 cm L.
450-153
reg. 23.00
14.99

B. Foundation Brush
Nylon bristles. For smoothing liquid foundation evenly onto the skin.
450-154
reg. 23.00
14.99

C. Blush Brush
Natural bristles. For defining, sculpting and shaping. 17 cm L.
450-157
reg. 21.00
13.99

D. Flawless Makeup Blender
Perfect for liquid or cream makeup. 5 x 3 cm. Non-latex polyurethane.
110-389-9
reg. 13.00
5.49



@MyAvonCanada

TAKE IT OFF... GENTLY!

Two highly-effective formulas remove all traces of makeup while being gentle on dehydrated skin.

COME CLEAN IN A SWIPE!
DAILY MUST-HAVE FOR AT-HOME
OR ON-THE-GO.



**Makeup Remover Wipes
with Mineral Complex**
24 wipes. 104-396-5
reg. 13.00

**LIMITED
TIME OFFER
7.99**



MAKEUP REMOVERS

WORKS QUICKLY AND EASILY
TO GENTLY REMOVE ALL TRACES
OF EYE MAKEUP.



MAKEUP



**Avon True Color
Moisturizing Eye Makeup
Remover Lotion**
Lightweight, fragrance-
free formula.
Dermatologist/
ophthalmologist-tested.
80 ml 109-574-9
reg. 12.00

**LIMITED
TIME OFFER
3.99**



DAZZLE AND SHINE

Model is wearing Very Berry.

NAILS

**GET A FUSS-FREE
HIGH-SHINE GEL
MANI MINUS
THE UV LIGHT!**

**Gel Finish 7-in-1
Nail Enamel**
7 benefits in one bottle:
shine, gel-like finish,
protection, vivid colour,
strengtheners, base and
top coat. 12 ml
14.00 or...

Gel Finish Top Coat
Extend the life of
your mani. 12 ml
14.00 or...



CRÈME
Mint To Be
108-822-2

CRÈME
Very Berry
112-310-8

SHIMMER
Dazzle Pink
112-310-5

TOP COAT
109-228-7

CRÈME
Purplicious
112-310-7

SPARKLE
Glimmer
434-549

**MIX OR MATCH
CHOOSE ANY
2 FOR 14.00
PAGES 54-55**

To get the 2 FOR price, please order in multiples of 2.

the
A-BOX



try-it sizes

full size

NEW

- Romance Me, Pamper Me
- Isa Knox Anew LX Ultimate Rejuvenating Serum, 7 ml
- Avon Crave Lip Gloss in Birthday Cake, 9 ml
- Avon True Color LOVE at 1st Lash Mascara in Blackest Black, 4 ml
- LYRD Artisan Santal Musk Eau de Parfum Travel Spray, 10 ml 222-591-3

ONLY 14.99

WITH EVERY 50.00 PURCHASE FROM THIS BROCHURE

(excluding the A-Box)
65.00 VALUE

In case of unforeseen demand, Avon reserves the right to substitute a product with one of equal or greater value.

THE BEAUTY COLLECTIVE

We're dedicated to bringing you a portfolio of *world-class brands*, each with a curated collection of the *most innovative, on-trend beauty products* available. Whether you're looking for prismatic primers, luxury makeup or cutting-edge skin care, we've got the *best of the best*.



- NO synthetic dyes**
- NO fragrances**
- NO mineral oil**
- NO animal products**
- NO parabens**
- NO sulfates**
- NO phthalates**

the true cream aqua bomb

70% increase in hydration*



belif The True Cream - Aqua Bomb
For normal/oily/combination skin.
Full size, 50 ml **222-400-9**
50.00
Try-it size, 25 ml **222-401-2**
29.00

FOR DRYNESS, DULLNESS AND UNEVEN TEXTURE

This ultra-light, water-based, refreshing gel cream bursts upon application to instantly cool skin and release a flood of weightless moisture. Helps visibly improve skin elasticity. Skin looks healthy, smooth and supple. Suitable for sensitive skin.



LADY'S MANTLE
An herb known for its antioxidant benefits.

the true cream moisturizing bomb

26 hours of intense hydration*



belif The True Cream - Moisturizing Bomb
For normal/dry skin.
Full size, 50 ml **222-401-6**
50.00
Try-it size, 25 ml **222-401-7**
29.00

FOR DRYNESS, AND LOSS OF ELASTICITY AND FIRMNESS

A lightweight yet indulgent cream with a comforting, cushiony, whipped texture, it envelops skin with intense, long-lasting moisture. Skin looks and feels smooth, supple and deeply nourished. Suitable for sensitive skin.



COMFREY LEAF
An herb known to help soothe, hydrate and detoxify skin.

*Based on a clinical study.



aqua bomb jelly cleanser

97% of women felt it was gentle while cleansing*

160 ml **222-316-8**
34.00

FOR DRYNESS, DULLNESS
AND UNEVEN TEXTURE

Jelly-to-foam. Explosive hydration like True Cream Aqua Bomb. Amino acids and glycerin-based cleansing agents gently remove makeup without stripping skin of moisture.

*Based on a consumer-perception study.



LADY'S MANTLE
An herb known for its antioxidant benefits.



moisturizing eye bomb

26 hours of moisture around eye area**

25 ml **222-319-0**
60.00

FOR DRYNESS, AND LOSS OF ELASTICITY AND FIRMNESS

This lightweight, refreshing eye cream cools on contact and keeps eye area firm, resilient and smooth for crease-free makeup application.

**Based on a clinical study.



PENNYWORT (aka CICA)
An herb known to soothe skin and boost elasticity.

a refreshing burst of spring!

THE FIRST FRAGRANCE FROM BELIF

NEW the garden eau de parfum

fresh + vibrant
Opening with notes of sparkling citrus and sweet berry, dewy spring blossoms and white flower entwine to capture nature's vitality. Smooth white musk and woods are wrapped in an earthy base for an unforgettable fragrance with a bright, fresh feeling. 50 ml
222-914-1
reg. 80.00
65.00



belif x VDL



Belif x VDL Aqua Bomb Glow Water Cream

Water-based formula envelops skin for instant hydration and glow. Silky cream texture absorbs smoothly into skin and visibly evens tone, creating the perfect luminous base for makeup. Free of mineral oils, synthetic fragrances and dyes. Vegan. 75 ml
222-464-4
 reg. 94.00
79.00



Belif x VDL Aqua Bomb Glow Moist Fix & Mist

Weightless 2-in-1 setting spray primes and preps skin and then sets makeup for a naturally radiant finish. Ultrafine mist with hydrating ingredients, keeps makeup smudge-proof and looking fresh, even in high humidity. Non-greasy, non-sticky sheer formula absorbs and dries quickly. Use prior to makeup for dewy glowing skin and then to set and refresh makeup throughout the day. 100 ml
222-464-8
 reg. 65.00
54.00



Belif x VDL Aqua Bomb Glow Moist Primer

Water-gel serum with hydrating micropearls. Quenches dry skin and fills and smooths the look of fine lines and pores, leaving a dewy glow and soft veil finish. Hydro-magnet ingredients help to prep skin so makeup grips and holds for improved wear. Vegan. 30 ml
222-464-6
 reg. 70.00
59.00

COMING IN CAMPAIGN 7!

Multi-tasking primer with a trio of tone-up capsules and rosy fine pearls, gorgeously evens skin tone and gives a subtle gloss effect.



SNEAK PEEK!

VDL Lumilayer Rosy Perfect Primer Trial-Size

For a velvety smooth, healthy-looking and radiant complexion. Instantly moisturizes, blurs pores and corrects skin tone. Locks down and extends the wear of base makeup. Infused with skin caring damask rose water, rose enfleurage oil and lady's mantle. 5 ml
223-100-3
 10.00 VALUE

ONLY 7.00

WITH ANY BELIFXVDL OR VDL
PURCHASE FROM PAGES 62-69

(excluding VDL Lumilayer Rosy
Perfect Primer Trial-Size)



EASY ON THE EYES

Stay fix system extends the wear of eye makeup for an all-day creaseless, smear-proof vivid look.



ORIGINAL



SERENITY

NEW

PREPS LIDS FOR SMOOTHER APPLICATION

VDL Expert Color Primer for Eyes

Enhances shadow shades for a more vibrant, brighter result. Infused with skin-caring Tahitian black pearl powder and silk protein. Each, 6.5 g
reg. 35.00
28.00 each



SHIMMER

PRIMER FOR EYES

SHIMMER

Great alone or to give your shadow extra oomph.

222-935-2

ORIGINAL

Great for your everyday basic makeup routine.

222-935-0



EXPERT-COLOR PRIMER FOR EYES



EXPERT-COLOR PRIMER FOR EYES

SERENITY

Great for matte shadows or to brighten dull eyes.

222-935-1



EXPERT-COLOR PRIMER FOR EYES



SNEAK PEEK! TRIAL-SIZE VDL LUMILAYER ROSY PERFECT PRIMER FOR ONLY 7.00! SEE PAGE 63 FOR DETAILS.

VDL LUMILAYER
TECHNOLOGY™



PRIME & SHINE

VDL Lumilayer Primer
Violet Lumilayer pigment visibly brightens, plumps and sculpts the look of skin for added dimension and volume. Blurs pores and enhances the wear of foundation providing a long lasting silky texture. Can be worn alone, under foundation, or as a sheer highlighter. 30 ml **222-306-8**
reg. 58.00
46.00



MATTIFY

VDL Satin Veil Primer
Soft-veiling polymers instantly blur pores and fine lines. Staves off shine. Infused with prune water to replenish skin with intensified hydration and rose enfleurage oil to improve skin's elasticity and texture over time. 30 ml **222-307-8**
reg. 58.00
46.00

VDL LUMILAYER
TECHNOLOGY™

GLOW

VDL Lumilayer Primer Fresh
Over 70% moisturizing essence for continuous all-day hydration and smooth skin. Sparkling blend of pearls that absorb and reflect light to create a warm radiant glow. 30 ml **222-306-9**
reg. 58.00
46.00



ILLUMINATE

VDL Lumilayer Metal Cushion Primer
Portable cushion primer is great for on-the-go. Infused with skin-brightening vitamin C and niacinamide. Blurs pores, highlights, primes and perfects skin. Includes cushion refill and 2 applicators. Each cushion, 15 g **222-307-0**
reg. 72.00
58.00



VDL LUMILAYER
TECHNOLOGY™

SNEAK PEEK! TRIAL-SIZE VDL LUMILAYER ROSY PERFECT PRIMER FOR ONLY 7.00! SEE PAGE 63 FOR DETAILS.

VDL LIP BALM REIMAGINED

Unique forms and fun designs that create the perfect balance of delicate colour and lip-softening care.

BLOOMING PINK
222-314-2

BLESSING CORAL
222-314-3

**MINT FAVOR
(COLOURLESS WITH MENTHOL)**
222-314-4

MOISTURIZING

VDL Expert Color Lip Cube Marble Glow

80% moisturizing oil instantly conditions and adds long-lasting shine. Enhances lips with a natural rosy colour. Unique cubic edge angled design with two-tone marble layers provides precise application. 3.3 g
reg. 40.00
32.00

TRI-COLOUR DESIGN



TRIPLE SCORE FOR LIPS PRIMER, BALM & TINT

VDL Tint Bar Triple Shot

- Tri-colour design creates a multi-hued layer of shiny, sheer delicate colour for softer, fuller looking lips.
- With moisturizing royal jelly and nourishing ester oil.
- Soft glowy, glossy finish.

3.5 g
reg. 33.00
26.00



MULTI STICK

Multi-purpose stick gives **cheeks and lips** a soft, dewy flush of colour.

Riding Hood
222-465-3

Gretel
222-465-4

Rose Flake
(ultrafine pearl)
222-465-2

Floege
222-465-1



NEW! VDL Creamy Stick Jelly

Glides on and blends effortlessly. Creamy jelly-soft colour. Buildable, sheer to medium coverage with a glossy finish. Formula infused with antioxidants, botanical extracts and moisturizing shea butter. 7.3 g
reg. 46.00
37.00



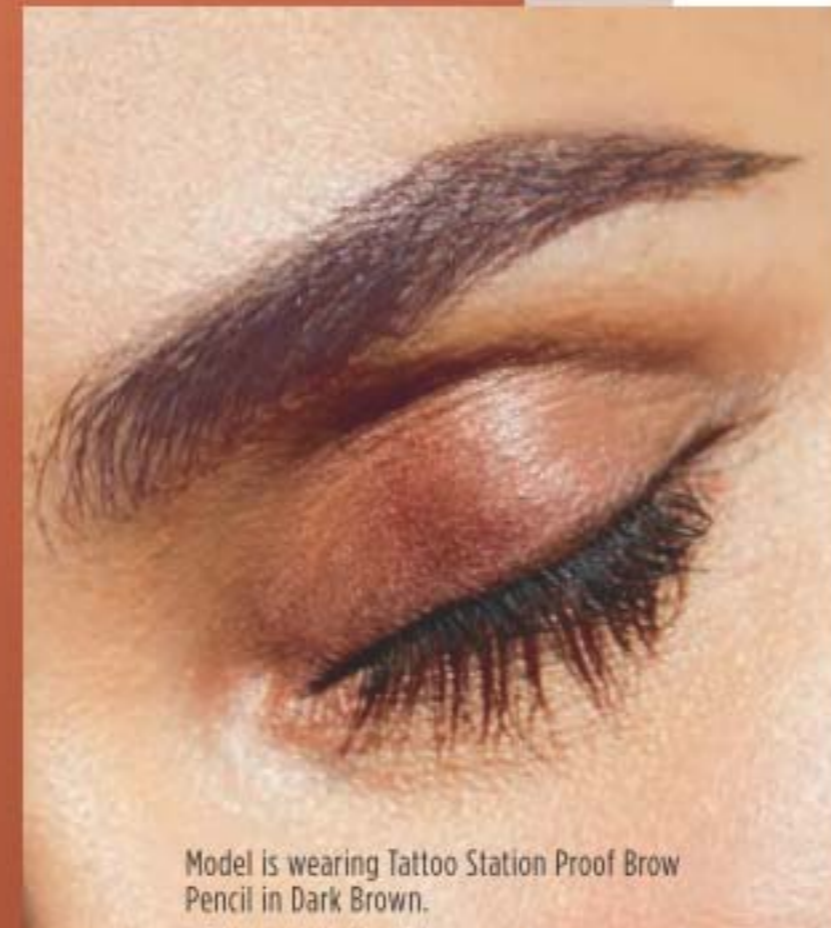
SNEAK PEEK! TRIAL-SIZE VDL LUMILAYER ROSY PERFECT PRIMER FOR ONLY 7.00! SEE PAGE 63 FOR DETAILS.

ARCH SUPPORT

Amp up your brow game with this cream-to-powder pencil, which softly defines and fills in brows for an all-day, long-lasting natural, perfected look.

Package labels may vary.

- Blonde
222-316-9
- Light Brown
222-317-0
- Brown
222-317-1
- Dark Brown
222-317-2
- Black Brown
222-317-4
- Dark Gray
222-317-3



Model is wearing Tattoo Station Proof Brow Pencil in Dark Brown.



Dark Brown

- Powdery, light and silky finish (cream-to-powder formula).
- No clumping or flaking.
- Waterproof.
- Spoolie on end.
- Applies smoothly and effortlessly.

**TATTOO STATION
PROOF BROW PENCIL**
0.5 g

15.00 or...

ONLY 7.99

**WITH EVERY 15.00
PURCHASE FROM
THIS BROCHURE
(EXCLUDING PAGES 70-71)**

THE FACE SHOP



WATERPROOF LIP & EYE MAKEUP REMOVER

\$13 | reg. 16.00

Gently removes even the most stubborn waterproof makeup.

- Dual-layer oil and water remover leaves skin fresh and clean.
- Infused with moisturizing oils.
- Mineral/talc/paraben-free.
- Shake well to activate.

110 ml

222-381-9



Dark Brown

includes dual-ended applicator



TATTOO STATION PROOF BROW POMADE

\$27 | reg. 33.00

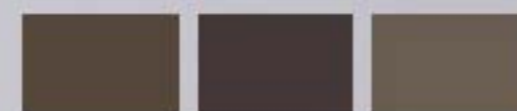
24 hours of waterproof wear. Brows go from soft and natural to bold and defined in seconds.

- Creamy formula with rich pigments and a matte finish.
- Dual-ended applicator with angled tip brush and spoolie grooms and applies with precision, 11 cm L.

4 g



Blonde 222-316-2 | Light Brown 222-316-3 | Brown 222-316-5



Dark Brown 222-316-6 | Black Brown 222-316-7 | Gray Brown 222-316-4



MONO POP EYESHADOW PALETTE

\$26 | reg. 32.00

Enhance your eye look with monochromatic shades that complement and make your eyes pop!

- 9 universally flattering shades to create endless looks for day to date.
 - Smooth, easy-to-blend shades.
 - Mix matte and shimmer shades for a multidimensional look.
- 7.2 g total.

Package labels may vary.

Mood Coral 222-126-6

Mood Brown 222-126-5



Model is wearing Tattoo Station Proof Brow Pomade in Dark Brown and Mono Pop Eyeshadow Palette in Mood Coral.

MODERN
NEUTRALS



A

A. INK LASTING CUSHION FOUNDATION SLIM FIT

\$35 | reg. 45.00

- Smooth, natural matte finish. Buildable medium-to-full coverage.
- Brightens and evens skin tone.
- Weightless feel, no caking.
- Antibacterial applicator and mirror included.

15 g

W10 Fair Light

LIGHT	MEDIUM	DEEP
C10 Neutral Ivory A. 221-897-5 B. 221-896-9	C30 Medium A. 221-898-4 B. 221-897-4	C50 Tan A. 221-899-4 B. 221-898-3
N10 Porcelain A. 221-896-4 B. 221-896-3	N30 Light Medium A. 221-897-9 B. 221-897-1	N50 Medium Tan A. 221-899-2 B. 221-898-0
W10 Fair Light A. 221-896-6 B. 221-896-5	W30 Medium Sand A. 221-898-6 B. 221-897-6	W50 Rich A. 221-899-5 B. 221-898-5
C20 Neutral Medium A. 221-898-1 B. 221-897-3	C40 Neutral Tan A. 221-899-3 B. 221-898-2	C60 Honey Deep A. 221-899-7 B. 221-898-8
N20 Neutral Light A. 221-897-0 B. 221-896-7	N40 Neutral Sand A. 221-898-9 B. 221-897-7	N60 Rich Honey A. 221-899-6 B. 221-898-7
W20 Ivory A. 221-897-2 B. 221-896-8	W40 Sand A. 221-899-1 B. 221-897-8	N70 Deep A. 221-899-8 B. 221-899-0



B

B. INK LASTING FOUNDATION SLIM FIT

\$32 | reg. 38.00

- Buildable, medium-to-full, long-wearing coverage with a smooth, natural matte finish.
- Brightens and evens skin tone.

30 ml

Package labels may vary.

N30 Light Medium

THE FACE SHOP

☉ TONE UP PRIMER

35.00 each or...

Colour-correcting toners instantly hydrate and leave skin prepped and ready for foundation.
30 ml

MINT for UNEVEN SKIN:
Neutralizes red, blotchy areas.
221-900-5

TONE UP PRIMER
BASE POUR LE TEINT
30 ml / 1.01 US FL. OZ.

LAVENDER For SALLOW SKIN:
Corrects yellowish undertones.
221-900-4

TONE UP PRIMER
BASE POUR LE TEINT
30 ml / 1.01 US FL. OZ.

TONE UP PRIMER
BASE POUR LE TEINT
30 ml / 1.01 US FL. OZ.

PINK for PALE SKIN:
Revives skin tone and brightens.
221-900-3

LUMIERE for DULL SKIN:
Iridescent pearl boosts skin's radiance.
221-900-2

TONE UP PRIMER
BASE POUR LE TEINT
30 ml / 1.01 US FL. OZ.



☉ INK LASTING PRIMER

35.00 or...

- Mattifies and controls oil.
- Minimizes the appearance of pores.

30 ml

221-931-8

PRIMERS ONLY \$18 EACH
WITH EVERY FOUNDATION PURCHASE FROM PAGE 74

THE FACE SHOP

MOISTURE CUSHION HIGHLIGHTER

\$19 | reg. 23.00

For a subtle and pretty pearlescent glow.

- Portable long-wearing cushion highlighter.
- Lightly tap onto cheeks, forehead, nose, cupid's bow and brow bone.
- Antibacterial applicator and mirror included.

8 g
221-901-9

Package labels may vary.



MOISTURE CUSHION BLUSH

\$19 | reg. 23.00

For a dewy, rosy watercolour-like flush.

- Portable long-wearing cushion blush.
- Blend of passion flower, rosehip oil and vitamin E leaves skin feeling nourished.
- Antibacterial applicator and mirror included.

8 g



Red 221-901-2



Coral 221-901-8



Pink 221-901-3



Model is wearing Moisture Cushion Blush in Pink.



ROUGE POWDER MATTE LIPSTICK

\$22 | reg. 26.00

Glides on smoothly with a powdery matte finish.

- Soft, light powdery feel.
- Smoothing ingredient for a soft blurring effect.

3.2 g

LAST TIME IN BROCHURE WHILE SUPPLIES LAST



Beige Powder
222-314-9



Berry Powder
222-315-3



Red Powder
222-315-2



Coral Powder
222-315-0



Rose Powder
222-315-1



Plum Powder
222-315-4

ROUGE SATIN MOISTURE LIPSTICK

\$22 | reg. 26.00

Caresses lips with a soft, satiny finish.

- Pigment-rich colour swipes on effortlessly in a single stroke.
- Lightweight formula hugs lips like a second skin.
- Available in 20 high-impact shades.

3.6 g

LAST TIME IN BROCHURE WHILE SUPPLIES LAST

moisturizing
colour-rich
formula

Red Pumps



Cozy Beige
222-132-8



Peaches and Cream
222-133-5



Coral Muse
222-133-4



Sling Back Pink
222-134-2



Kiss the Coral
222-133-1



Street Coral
222-133-2



Cashmere Coral
222-133-0



Blush Beige
222-132-9



Dear Coral
222-133-3



It Coral
222-133-8



Sunrise Red
222-133-7



Tahiti Orange
222-133-6



Fashion Red
222-133-9



Fever Red
222-134-1



Red Pumps
222-134-0



Trench Brown
222-132-6



Muted Pink
222-134-3



Midnight Rose
222-134-4



Rosy Brown
222-132-7



Purple Wave
222-132-1

THE FACE SHOP

FLAT VELVET LIPSTICK

\$14 | reg. 17.00

Flat tip shapes, lines, contours and fills lips effortlessly.

- Powdery, velvet matte finish.
- Visibly smooths fine lines.
- Infused with soothing calendula oil.
- Available in 10 highly pigmented shades.

1.4 g

FLAT VELVET LIPSTICK



Scarlet Red

Solar Beige

TATTOO MATTE



SERUM SHINE



Living Coral

Package labels may vary.



INK LIP TINT

\$17 | reg. 22.00

Lightweight, long-lasting liquid lip stain with vivid colour. Available in two finishes, **Matte** or **Shine**.

TATTOO MATTE

- Glides on sleek, dries down to a silky-soft matte finish.
- Available in 8 shades.

SERUM SHINE

- The perfect combo of a dazzling gloss and bold tint with a high-shine finish.
- Available in 4 shades.

LAST TIME IN BROCHURE WHILE SUPPLIES LAST

5 g

vivid shades
with complementary
combinations



Purple with Beige

FLAT TWO-TONE LIPSTICK

\$19 | reg. 23.00

Slim two-tone lipstick creates a gorgeous natural gradient ombré look in a single stroke.

- Unique flat tip for precise, smooth application.
- Blends easily with a shiny gloss finish.
- Paraben-free.

1.3 g



Model is wearing Flat Two-Tone Lipstick in Purple with Beige.

NATURAL SKIN CARE

Dermatologist-tested. Naturally-derived ingredients. Vegan and paraben-free skin care.



MANGO SEED ADVANCED MOISTURIZING BUTTER

45.00 or...

Nutrient-dense butter gives skin a dewy, radiant glow.

- Suitable for dry skin.
- Use AM/PM.
- Non-greasy.
- Formulated without 6 parabens*.

50 ml
221-939-9

MANGO SEED ADVANCED RADIANT MOISTURIZING OIL

45.00 or...

Prevents moisture loss and improves the look of radiance.

- Suitable for dry skin.
- Use AM/PM.
- Lightweight.
- Apply 1 to 2 drops, tap lightly to promote absorption.
- Formulated without 6 parabens*.

40 ml
221-939-8

Package labels may vary.

THE THERAPY SKIN CARE

Hand-blended essential oils derived from a 200-year-old formulation of flowers, leaves and fruits keep skin feeling nourished and looking younger.

OIL-DROP ANTI-AGING FACIAL SERUM

\$42 | reg. 52.00

Visibly restores youthful radiance and reduces the look of wrinkles.

- Oat seeds, rich in beta-carotene and marigold petals, bay leaves and olive oil.
- Apply AM/PM.

45 ml
221-899-9

**LAST TIME IN BROCHURE
WHILE SUPPLIES LAST**



OIL BLENDING CREAM

\$52 | reg. 65.00

Leaves skin visibly smooth and glowing.

- Sandalwood, avocado and palmarosa leaves.
- On first use, blend oil and cream with spatula.
- Apply AM/PM after serum.

50 ml
221-896-2

**LAST TIME IN BROCHURE
WHILE SUPPLIES LAST**

THE FACE SHOP

896-320-4

**GET BOTH
FOR \$65**

PAGE 80

A. CICA PEPTIDE AMPOULE

\$52 | reg. 65.00

For skin that needs firming.

- A concentrated blend of cica and peptides.
- Dermatologically-tested.
- Suitable for sensitive skin.
- Use after cleansing and before moisturizing with any Cica Cream.

45 ml
221-966-1

B. CICA RECOVERY CREAM

\$48 | reg. 60.00

For extra-dry and damaged skin.

- Strengthening ceramide helps restore the moisture barrier.
- Dermatologically-tested.
- Suitable for sensitive skin.

50 ml
221-900-9

C. CICA HYDRO CREAM

\$48 | reg. 60.00

For instant hydration.

- Hydrating hyaluronic acid cools and soothes.
- Dermatologically-tested.
- Suitable for sensitive skin.

50 ml
221-901-7
LAST TIME IN BROCHURE WHILE SUPPLIES LAST

D. AMINO CLEAR BUBBLE FOAMING CLEANSER

\$18 | reg. 23.00

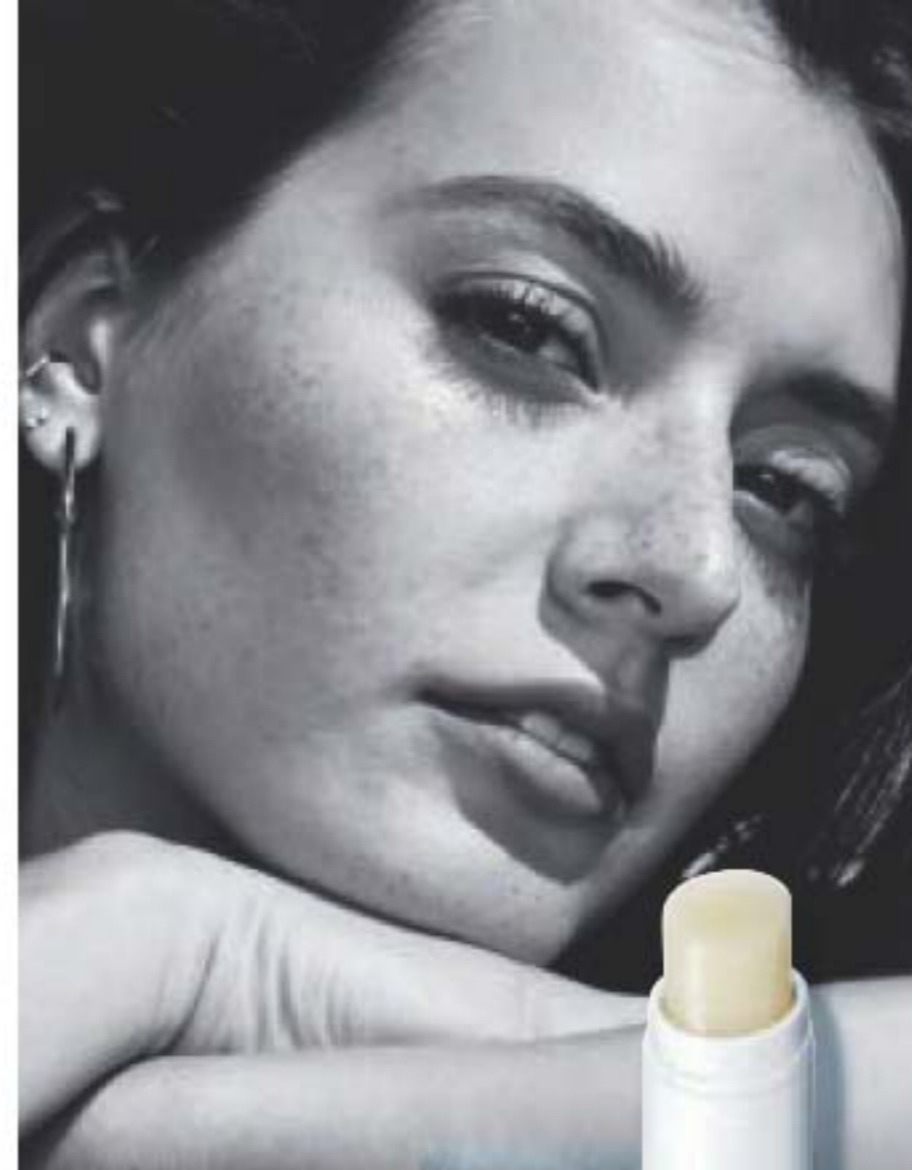
Cleanser for oily skin.

- With amino acid-based ingredients to unclog pores and clean away dead skin cells.
- Deep-cleansing pump action.
- Light citrus and herbal scent.
- Dermatologically-tested.

150 ml
221-965-6



Package labels may vary.



DR. BELMEUR SKIN-SYNC RX™

with plant-based, skin-friendly ingredients.



NEW

E. DAILY REPAIR CICA MOISTURIZING LIP BALM

\$18 | reg. 21.00

Soothes dry, sensitive lips. Moisturizing cica-infused oil glides over lips to keep them soft and smooth. Free of fragrance and mineral oil. Suitable for sensitive skin. Dermatologically tested. 4 g **222-915-5**

TO USE:
Unfold mask. Apply to cleansed face. After 10-20 minutes, remove and massage serum into skin.



NEW

F. CICA PEPTIDE INTENSE FACE MASK

\$4 | reg. 6.00

Soothes troubled skin. With concentrated cica and peptides like the ampoule for visibly soothed, smooth, naturally glowing skin. Fabric sheet mask gently adheres to skin without irritation. Dermatologically-tested. 1 single-use sheet mask. **222-945-8**



contains
99% pure
aloe!



**JEJU ALOE
99% FRESH
SOOTHING GEL**

\$9.99 | reg. 13.00

With 99% aloe extract,
instantly hydrates and
soothes dry, sensitive skin.

- Restores moisture level.
- Infused with 9 other soothing herb extracts: chamomile, spearmint, lemon balm, rosemary, lavender, bergamot, basil, sage and oregano.
- Non-sticky absorption.
- Apply liberally over face and body.

300 ml
222-337-2

NOURISHING:

With propolis extract.
Helps restore the look
of healthy-looking
vitality to tired skin.
222-242-9

**THE SOLUTION
FACE MASK**

\$3 EACH | reg. 3.50

Single use sheet mask.

- Feels light as air.
- Hugs face snugly and comfortably.
- Semipermeable to help skin absorb ingredients.
- No parabens.



FIRMING:

With collagen.
Helps reduce the appearance
of wrinkles,
and restore
firmness and
radiance.
221-967-3

PORE CARE:

With tannins. Helps
reduce shine and visibly
reduce the look of pores.
222-242-8



ROOTS? NEVER.

Root Touch-Up

Cover grey in seconds...
and extend time
between salon visits.
Easy to use. Travel-
ready. Paraben-free.
Built-in mirror.
Each, 7 g
reg. 26.00
21.00 each



Dark
Brown
222-135-2

Black
222-135-3



Light
Brown
222-135-0

Reddish
Brown
222-134-9



Package labels may vary.

BEFORE & AFTER



Simulation

With scalp-nourishing
artemisia princeps leaf extract,
black bean and ginseng.

SENSITIVE SKIN FEELS DRY AND TIGHT?

PHYSIOGEL

DAILY MOISTURE THERAPY

Born in Europe. Powered by science.
Dermatologist-recommended worldwide.



PHYSIOGEL
HYPOALLERGENIC

DAILY
MOISTURE
THERAPY
DERMO-
CLEANSER

THERAPIE
HYDRATANTE
AU QUOTIDIEN
Dermatoblyant

FOR DRY AND
SENSITIVE SKIN

POUR LA PEAU SECHE
ET SENSIBLE

150 ml / 5.1 FL. OZ.

FACIAL
CLEANSER

Dermo-Cleanser
150 ml
222-791-5
reg. 35.00
27.99

GENTLE DAILY USE FACIAL CLEANSER

Cleanses and softens dry, sensitive skin and can be used with or without water.

CLINICALLY
PROVEN
MOISTURIZATION

TRIPLE ACTION:

- Repair • Restore • Hydrate

This mild, soap-free cleansing gel treats dry, sensitive skin that can feel tight and comfortable.

Formulated to replenish skin's lost lipids and pH-balanced to strengthen skin's moisture barrier, it works naturally with skin to provide a smooth, clean feeling and intense moisture so your skin feels less dry and sensitive.

Hypoallergenic and non-comedogenic. No fragrances, preservatives or colourants.



TO USE:

WITH WATER:

Apply cleanser to skin and rub gently. Rinse.

WITHOUT WATER:

Apply a liberal amount of cleanser to the skin and rub gently.

Remove excess with a cotton pad.

SENSITIVE SKIN FEELS DRY AND TIGHT?

PHYSIOGEL

DAILY MOISTURE THERAPY

Born in Europe. Powered by science.
Dermatologist-recommended worldwide.



FOR FACE

FOR BODY

Daily care for dry, sensitive skin

91%
felt their skin
was moisturized*

93%
felt their skin
was supple*

Repairs and moisturizes
dry skin for up to
72 hours**

*Self-evaluation of 46
subjects after 2 weeks use.
**After continuous
application twice daily for
28 days in a clinical study.



CLINICALLY
PROVEN
MOISTURIZATION

**TREATS DRY, SENSITIVE, TIGHT
AND UNCOMFORTABLE SKIN**

Clinically proven to replenish
lost lipids and strengthen skin's
natural moisture barrier so skin feels
soft, smooth and visibly healthy.

TRIPLE ACTION:

- Repair • Restore • Hydrate

A. Facial Lotion

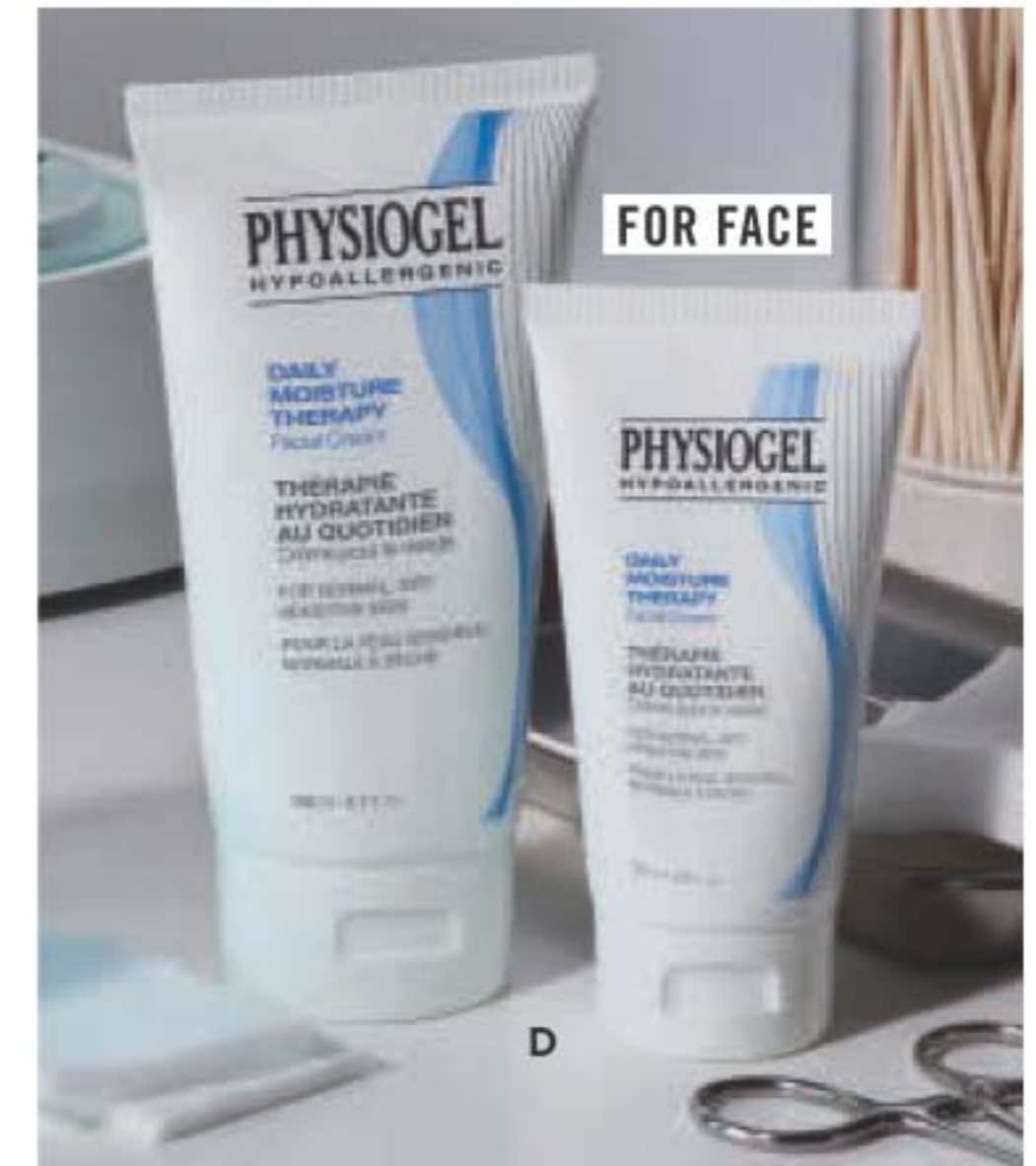
Lightweight, quickly absorbed
lotion with the feel of a light
emulsion cream. 200 ml
222-615-5
reg. 58.00
34.99

B. Intensive Cream

Rich daily facial cream
provides long-lasting, intensive
moisturization. 100 ml
222-791-4
reg. 62.00
48.99

C. Body Lotion

Lightweight, quickly absorbed
lotion with the feel of a light
emulsion cream. 200 ml
222-791-3
reg. 42.00
33.99



D. Facial Cream

Day cream provides long-lasting
moisture for normal to dry
sensitive skin.

AVAILABLE IN 2 CONVENIENT SIZES!

150 ml **222-615-9**
reg. 73.00
58.99

75 ml **222-615-7**
reg. 45.00
36.99

Hypoallergenic and non-comedogenic.
No fragrances, preservatives or colourants.

SKIN FEELS DRY, ITCHY, RED,
SENSITIVE AND IRRITATED?

PHYSIOGEL

CALMING RELIEF

**Born in Europe.
Powered by science.
Dermatologist-recommended
worldwide.**



A.I. Lotion

Facial lotion for instant and long-lasting, soothing relief of redness and itching due to dryness. Light cream emulsion. 200 ml

222-791-7
reg. 62.00
48.99

A.I. Cream

Facial cream for instant and long-lasting, soothing relief of redness and itching due to dryness. 100 ml **222-791-9**

reg. 70.00
55.99

Hypoallergenic and non-comedogenic.
No fragrances, preservatives or colourants.



L Y R D

layers redefined

A world of authentic fragrances expertly crafted by master perfumers, inspired by the beauty found in everyday life.

INTRODUCING
ROSE DU SOLEIL

Capture the warmth
of the sun.



NEW

LYRD
Rose du Soleil Eau de Parfum
fresh & vibrant
Radiant notes of sun-ripened
raspberry, enchanting rose
and spicy patchouli. 50 ml
222-611-6
reg. 52.00
42.00

Long ago, a traveller from afar fell in love with an elegant beauty in the bustling Ginza district of Tokyo. A chance encounter to forbidden passion and heartbreaking distance, their love endures through hundreds of letters. Introducing a new fragrance collection that explores the story of our steadfast lovers and the power of their eternal love.

INTRODUCING GINZA STEFANY

NEW

In My Arms Eau de Parfum *fresh & sweet*

Recreates the beautiful moment that Steve and Stefany shared their first kiss. Under a sunlit gardenia tree, as notes of black currant and delicate peach filled the air, their undying passion was professed. 50 ml **222-792-2**
reg. 58.00
49.00

NEW

Wish You Were Here Eau de Parfum *fresh & clean*

Transports you back in time with our lovers to a quiet, dewy meadow at dawn where fragrant notes of sweet hawthorn berry, ripe pear and sensuous patchouli filled the air, recreating the moment Steve and Stefany declared their love. 50 ml **222-792-1**
reg. 58.00
49.00

UNFORGETTABLE
NOTES OF GARDENIA,
BLACKCURRANT
AND PEACH.

IRRESISTIBLE NOTES
OF SWEET HAWTHORN
BERRY, RIPE PEAR
AND SENSUOUS PATCHOULI.

STUDIO 1886

fragrance collection

Be inspired by the past,
embrace the present,
look to the future.

GILDED

Gilded Eau de Parfum *fresh & vibrant*

Celebrate the opulence of Victorian America with an exquisite blend of watery rhubarb, violet leaves and rich black currant, transporting you back in time with a modern twist. 50 ml
222-599-3
reg. 70.00
55.00

XXI

XXI Eau de Parfum *fresh & clean*

Bold and addictive blend that embraces the fearless entrepreneurial women of today with sparkling orange, fresh sage and patchouli, inspiring confidence. 50 ml
222-599-4
reg. 70.00
55.00

TECHTOPIAN

Techtopian Eau de Parfum *fresh & vibrant*

Blurring the lines between the virtual and natural world, this electrifying disruption looks to the future with notes of magnolia, white rose and warm musk. 50 ml
222-598-8
reg. 70.00
55.00

From an indulgent shower experience to luxurious lotion, skin feels refreshed, supple and beautifully scented.



Shower Gel

Body Lotion

NEW! Gilded Perfumed Shower Gel
222-697-2

NEW! Gilded Perfumed Body Lotion
222-694-0
Each, 200 ml
reg. 28.00
21.99
EACH

Shower Gel

Body Lotion

NEW

Techtopian Perfumed Shower Gel
222-697-4

Techtopian Perfumed Body Lotion
222-697-1
Each, 200 ml
reg. 28.00
21.99
EACH



NEW! XXI Perfumed Shower Gel
222-697-3

NEW! XXI Perfumed Body Lotion
222-694-1
Each, 200 ml
reg. 28.00
21.99
EACH

Shower Gel

Body Lotion



**LYRD Sparkling Neroli
Eau de Parfum Travel Spray**
fresh & vibrant

Portable, perfect for on-the-go! 10 ml
222-428-9
reg. 26.00
21.99

LYRD Sparkling Neroli Eau de Parfum
fresh & vibrant

Experience the crisp and vibrant freshness of sparkling neroli, blended with uplifting bergamot and warm musk. 50 ml **222-246-6**
reg. 52.00
42.00

Flourish Honey Blossom

Eau de Parfum
fresh & sweet

Notes of sparkling apple blossom, sweet honeysuckle nectar and airy vanilla orchid. 50 ml
221-125-3
reg. 42.00
28.00



Flourish Peony Rosé Eau de Parfum
fresh & clean

Notes of dewy peony petals, pink currant and sheer musk. 50 ml
221-823-2
reg. 42.00
28.00
LAST TIME IN BROCHURE WHILE SUPPLIES LAST

Kate Eau de Toilette
fresh & clean

Notes of watermelon, fresh ginger, jasmine, peony, sandalwood and musk. 50 ml
222-436-2
40.00



NEW! LYRD Bouquet de Freesia Eau de Parfum
fresh & clean

An unexpected mix of sweet freesia, tulip and warm amber. 50 ml
222-611-3
reg. 52.00
42.00



Santal Musk Eau de Parfum
warm & exotic
Indian sandalwood mixes with magnetic white musk. 50 ml
222-376-4
reg. 75.00
60.00

ARTISAN CAPTIVATING UNISEX SCENTS FOR HIM AND HER

LYRD ARTISAN

PORTABLE, PERFECT FOR ON-THE-GO!



✪ **NEW!** Santal Musk Eau de Parfum Travel Spray
warm & exotic
10 ml **222-376-7**
30.00 or ...

12.99
WITH EVERY FULL-SIZE PURCHASE OF SANTAL MUSK EAU DE PARFUM

PORTABLE, PERFECT FOR ON-THE-GO!



✪ **NEW!** Cherry Vetiver Eau de Parfum Travel Spray
warm & indulgent
10 ml
221-959-0
30.00 or ...

12.99
WITH EVERY FULL-SIZE PURCHASE OF CHERRY VETIVER EAU DE PARFUM



Cherry Vetiver Eau de Parfum
warm & indulgent
Wild cherry blends with smooth Haitian vetiver. 50 ml **221-958-8**
reg. 75.00
60.00

FLIRTY FLORALS

Velvet Eau de Parfum warm & indulgent

Luscious Mediterranean fig, pomegranate, sumptuous Bulgarian rose and warm velvet patchouli. 50 ml
220-473-7
reg. 42.00
30.00



Velvet Eau de Parfum Travel Spray warm & indulgent

Perfect spritz for on-the-go! 10 ml
220-675-2
reg. 19.00
10.99
LAST TIME IN BROCHURE WHILE SUPPLIES LAST

Velvet Crème Veil Cushion warm & indulgent

This luxurious crème formula leaves skin feeling soft and smooth. Perfect for a quick fragrance touch-up on-the-go! 14 g 222-565-7
reg. 52.00
42.00



Today Eau de Parfum fresh & clean

Joyful notes of hibiscus and silk musk. 50 ml
836-39
reg. 42.00
32.00



Avon Prima Noir Eau de Parfum warm & indulgent

Violet, jasmine and creamy vanilla noir. 50 ml
119-733-8
reg. 42.00
28.00

Avon Prima Eau de Parfum warm & dreamy

Plum, rose and white patchouli. 50 ml
122-508-3
reg. 42.00
28.00

LIVE OUT LOUD



Eau de Parfum Travel Spray
fresh & vibrant
Perfect spritz for on-the-go!
10 ml 221-143-2
reg. 20.00
11.49

Eau de Parfum
fresh & vibrant
Sweet wild strawberry, sparkling mimosa and vanilla.
50 ml
221-142-5
reg. 56.00
35.00

✦ **Hair Fragrance**
Scents hair while adding featherlight conditioners that won't weigh your hair down.
96 ml 221-852-0
14.99 or...

FRAGRANCE YOUR HAIR
ONLY 8.99

WITH EVERY LIVE OUT LOUD
50 ML EAU DE PARFUM
PURCHASE

WARM & EXOTIC

LET YOUR PASSION BLOOM WITH IMARI

AN EXOTIC BLEND
OF ITALIAN BERGAMOT,
OPULENT JASMINE
AND TEMPTING VANILLA.

52.00
VALUE



IMARI
warm & exotic

Roll-On Anti-Perspirant Deodorant

Non-whitening, quick-drying and anti-staining formula. Reduces underarm wetness and provides long-lasting odour protection. 75 ml

106-378-3

5.00 or...

Eau de Toilette

A sizzling fragrance with warm and exotic notes.

50 ml 222-370-1

35.00 or...

Perfumed Skin Softener

Smooth on this rich, creamy and delicately scented moisturizer for soft, silky skin. 150 ml

222-701-8

12.00 or...

896-334-4

ALL 3 FOR

ONLY 17.99

WITH EVERY 15.00 PURCHASE
FROM THIS BROCHURE

(excluding Imari 3-Piece Pack)

RARE PEARLS

REVEAL YOUR RARE BEAUTY

Shimmering magnolia, white pepper and creamy rosewood combine for a fragrance that's as unique as you are.

A LUMINOUS BLEND OF EXQUISITE FLORALS THAT REVEALS A BOUQUET OF WARM AND DREAMY NOTES.



Eau de Parfum
warm & dreamy
50 ml
102-457-0
reg. 35.00

**LIMITED
TIME OFFER
19.99**

CLASSIC SCENTS

SHOW OFF EVERY FACET OF YOUR BEAUTY.

**Rare Amethyst
Eau de Parfum**
warm & indulgent
Passionate plum,
mysterious
violet and
sandalwood.
50 ml
102-456-8
reg. 35.00
22.99



**Rare Diamonds
Eau de Parfum**
warm & dreamy
Sparkling plum,
diamond orchid
and cashmere
woods. 50 ml
106-258-0
reg. 35.00
22.99

**Haiku Reflection
Eau de Parfum**
fresh & clean
Radiant water
accord, acacia
blossom and
amber wood.
50 ml
115-861-8
reg. 35.00
22.99



**Haiku Kyoto Flower
Eau de Parfum**
fresh & clean
Violet leaf, white
peony and soft
cotton musk.
50 ml **435-140**
reg. 35.00
22.99

FRAGRANCE FAVOURITES

AWAKEN YOUR WANDERLUST
FOR EXOTIC LOCATIONS.

**Far Away Gold
Eau de Parfum**
warm & exotic
Rich Mohéli
ylang-ylang,
Indian jasmine
and seductive
Madagascar
vanilla. 50 ml
453-015
reg. 35.00
22.99



**Imari Seduction
Eau de Toilette**
warm & indulgent
Luscious plum,
hypnotic purple
orchid, warm
vanilla, amber
and musk. 50 ml
220-270-2
reg. 35.00
22.99

**Far Away Infinity
Eau de Parfum**
fresh & sweet
Bright marigold,
Indian jasmine
sambac and
vanilla. 50 ml
122-508-4
reg. 35.00
22.99



**Far Away
Eau de Parfum**
warm & exotic
Warm peach,
jasmine, spiced
amber and spirit-
moving woods.
50 ml
220-222-6
reg. 35.00
22.99

AVON CLASSICS COLLECTION

Candid Cologne
warm & exotic
50 ml 110-321-3

Odyssey Cologne
warm & dreamy
50 ml 110-321-2

Night Magic Cologne
warm & exotic
50 ml 110-300-9

Timeless Cologne
warm & exotic
50 ml 110-373-1

Sweet Honesty Cologne
warm & dreamy
50 ml 110-437-8

reg. 26.00
15.99 EACH



MUGUET, YLANG-YLANG AND WARM OAKMOSS.

BERGAMOT, JASMINE AND PATCHOULI.

BERGAMOT, TUBEROSE AND PATCHOULI.

ROSES, PEACH AND SANDALWOOD.

NEROLI, JASMINE AND MUSK.



IT'S BACK!

Free O2 Eau de Toilette
fresh & clean
Refreshing white peach tea, airy honeysuckle and musk. 50 ml
222-618-9
reg. 26.00
15.99

DAILY ESSENTIALS

Perfumed Skin Softener
150 ml
reg. 12.00
5.99 EACH

Night Magic
222-623-2
Timeless
222-623-1
Candid
222-623-3
Haiku
222-702-2
Odyssey
222-623-4
Far Away
222-702-0
Sweet Honesty
222-623-0



DAILY ESSENTIALS

Body Lotion
200 ml

Far Away
382-962
Haiku
155-600
Rare Pearls
102-953-3
reg. 17.00
8.99 EACH



**FOR SKIN THAT
FEELS SOFT, SILKY
AND SMOOTH.**

Perfumed Rollette 9 ml
Imari
111-582-9 Sweet Honesty
Far Away
229-803 **229-760**
Haiku
229-804 reg. 6.00
5.29 EACH



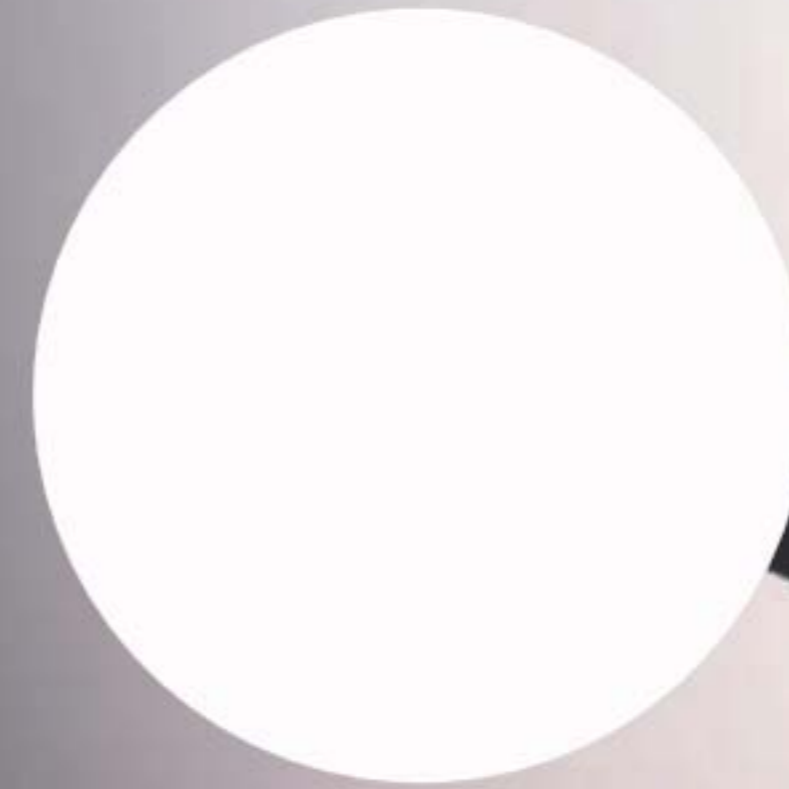
**LUXURIOUS, LONG
LASTING SCENTS WITH
RICH EMOLLIENTS.**



STUDIO
1886
fragrance collection

Studio 1886 Legendary
delivers the finest
and most unforgettable
ingredients for a heroic
fragrance experience
for him.

STUDIO 1886



NEW

**LEGENDARY
EAU DE TOILETTE**

fresh & aromatic
Vibrant lemon eases
into crisp lavender
for a fresh faceted
opening. Notes of
patchouli and salted
amber provide
complexity and depth,
revealing exquisite
ingredients for a
memorable fragrance
experience. 50 ml
222-706-0
reg. 70.00
55.00



MEN'S CLASSICS

Black Suede Eau de Toilette

fresh & aromatic
Fresh, aromatic notes of bergamot, soft leather and oakmoss. 100 ml
222-427-9
reg. 32.00
18.99



**THEY'RE
BACK!**

**Black Suede
Hair & Body
Wash**
150 ml
222-701-7
reg. 12.00
5.99

**Black Suede
After Shave
Conditioner**
100 ml
222-701-5
reg. 12.00
5.99



large
150 ml

**Black Suede
Boot Decanter
Eau de Toilette**
fresh & aromatic
Fresh, aromatic notes of bergamot, soft leather and oak moss. 150 ml
220-670-6
20.00

**Wild Country
Cologne**
fresh & aromatic
88 ml 836-47
reg. 32.00
18.99



**Wild Country
After Shave
Splash**
118 ml
222-574-4
reg. 19.00
13.99

**Wild Country
Hair and Body
Wash**
150 ml
222-701-6
reg. 12.00
5.99

MEN'S CLASSICS

**Exploration
Eau de Toilette**
fresh & clean
Fresh orange, silver sage and vetiver. 75 ml 122-508-2
reg. 35.00
22.99



**Perceive
Cologne**
fresh & clean
Citrus, sage and cedarwood. 100 ml 831-73
reg. 35.00
22.99

**Avon Prime
Eau de Toilette**
fresh & clean
Lavender, spearmint and cedarwood. 75 ml 114-322-0
reg. 35.00
22.99



**Blue Escape
Eau de Toilette**
fresh & clean
Ocean mist, white pepper, tropical driftwood and musk. 75 ml 391-946
reg. 35.00
22.99

Mesmerize Cologne
warm & intoxicating
Bergamot, spicy cardamom and woody notes. 100 ml 222-370-2
reg. 35.00
22.99



**Alpha
Eau de Toilette**
fresh & aromatic
Verbena, juniper berries and cedarwood. 100 ml 104-118-3
reg. 35.00
22.99



True Gent
Eau de Toilette
warm & comforting
Laurel leaf, tobacco
and vanilla suede.
100 ml **221-076-0**
reg. 42.00
28.00
LAST TIME IN BROCHURE
WHILE SUPPLIES LAST

True Gent Blue
Eau de Toilette
fresh & clean
Fresh basil, watery
coconut and cedarwood.
100 ml
221-958-5
reg. 42.00
28.00



DEODORANTS don't sweat it

Anti-stain formula

Perfumed Liquid Deodorant
Easy fingertip application. Quick-drying
with long-lasting odour protection.
Aluminum-free. 59 ml
298-088
reg. 9.00
5.99



Wild Country 369-866
Mesmerize 103-708-3
Black Suede 114-898-5

FOR HIM

Roll-On
Anti-Perspirant
Deodorant
75 ml
reg. 5.00
3.79 EACH

24-HOUR
WETNESS
PROTECTION

FOR HER



Rare Pearls 103-708-1
Sweet Honesty 370-736
Rare Gold 103-708-2
Night Magic 107-042-5
Odyssey 107-042-6
Timeless 370-735
Haiku 107-042-4
Far Away 107-042-7

LONG-LASTING ODOUR PROTECTION



Cool Confidence Original 380-344
Cool Confidence Baby Powder 380-346
Feelin' Fresh Original 380-345
Skin So Soft Soft & Sensual 119-964-4
On Duty Unscented 380-343
On Duty Original 380-342
On Duty Sport 380-309
Tranquil Moments 107-425-6

GENTOLOGY FOR MEN

HERB & ALOE



HAIR &
BODY WASH

MOISTURIZER

2-in-1 Hair and Body Wash
Washes away dirt and sweat
without over-drying. No parabens
or mineral oil. Dermatologist-
tested. 300 ml **222-371-8**
reg. 23.00
18.99

Total Care Moisturizer
Tones, moisturizes, helps visibly
brighten and smooth wrinkles...all
in one. Use AM/PM on face, neck
and body after cleansing and
shaving. No parabens or mineral
oil. Dermatologist-tested.
150 ml **222-371-7**
reg. 23.00
18.99

ANEW PLATINUM

ANEW PLATINUM REGIMEN SET INCLUDES THREE FULL SIZE MOISTURIZERS PLUS ONE TRY-IT SIZE SERUM.

- Platinum Regimen Set**
- **Day Cream SPF 25**
50 g
 - **Eye & Lip Cream**
Dual applicator. 15 g
 - **Night Cream**
50 g
 - **Power Serum** 7 ml

120-840-6
reg. 158.00

4-PIECE BOXED SET

**LIMITED
TIME OFFER
64.99**



ANEW ULTIMATE

ANEW ULTIMATE REGIMEN SET INCLUDES THREE FULL SIZE MOISTURIZERS PLUS ONE TRY-IT SIZE SERUM.

- Ultimate Regimen Set**
- **Multi-Performance Day Cream Broad Spectrum SPF 25**
50 g
 - **Multi-Performance Eye System**
Cream, 15 g; elixir, 2.5 g
 - **Multi-Performance Night Cream**
50 g
 - **Power Serum** 7 ml

220-293-5
reg. 158.00

4-PIECE BOXED SET

**LIMITED
TIME OFFER
64.99**



ANEW PLATINUM

Firm and Sculpt Cream for Neck and Chest

Visibly smooths and tightens the look of skin on neck and chest. Use PM. 50 g
116-652-7
 reg. 59.00
33.99

SHOW OFF
 YOUR
 DÉCOLLETAGE!



Day Cream SPF 25

Visibly lifts and firms the look of the jawline. 50 g
244-709
 reg. 59.00
33.99

RECONTOURS
 THE LOOK
 OF SAGGING SKIN.



Eye & Lip Cream

Dual applicator. 15 g
429-062
 reg. 59.00
33.99

RENEWS THE
 LOOK OF SKIN
 AROUND EYES
 AND LIPS.



Night Cream

Overnight, skin appears smoother. 50 g
106-588-4
 reg. 59.00
33.99

REDUCES THE
 LOOK OF WRINKLES
 AND SKIN
 DISCOLOURATION.



ANEW ULTIMATE



Multi-Performance Day Cream Broad Spectrum SPF 25

Skin looks visibly firmer with fewer wrinkles and appears more luminous than ever before. 50 g
122-903-9
 reg. 59.00
33.99

Multi-Performance Night Cream

Works while you sleep to revive and recreate the look of youthful skin. 50 g
122-904-2
 reg. 59.00
33.99



Multi-Performance Eye System

2-in-1 treatment for firmer, smoother-looking skin around eyes. Cream, 15 g; elixir, 2.5 g
122-538-2
 reg. 59.00
33.99



Discover the rejuvenating
POWER of PEONIES
 with Isa Knox Anew LX Ultimate

With **nutmeg** to help visibly diminish discolourations and even skin tone, and calm and soothe skin.

Dual Night Cream with **rice bran extract**, an antioxidant that helps protect skin's lipids and **peptides** to help stimulate collagen and elastin for plumper, firmer and youthful-looking skin.



Day Cream
 This multi-purpose paeonol-infused day cream visibly reduces the look of wrinkles and improves elasticity, radiance and skin texture. 50 ml **222-443-7**
 reg. 70.00
56.00

Dual Night Cream
 9 out of 10 women said it restores the look of skin's vitality*. Infused with paeonol and nourishing macadamia oil enriched with omegas (3, 6, 7, 9) to help support skin's moisture barrier. Firming Cream, 25 ml; Volumizing Cream, 25 ml **222-443-8**
 reg. 70.00
56.00

*Based on a 7-day consumer-perception test.

Isa Knox Anew LX
ULTIMATE
 REJUVENATING COLLECTION

Both formulas contain **ceramides** known to protect skin's moisture barrier, boosting hydration to keep skin looking firm and smooth.



Serum
 9 out of 10 women said it makes skin look and feel dramatically smoother*. The luxurious paeonol-infused serum visibly improves elasticity, skin texture and radiance, and reduces the appearance of fine lines and wrinkles for a younger, firmer look. 40 ml **222-443-9**
 reg. 80.00
64.00

*Based on a 7-day consumer-perception test.

Eye Serum
 This paeonol-infused serum helps visibly reduce the look of fine lines around the eye area, diminish dark circles and depuff bags. 30 ml **222-444-0**
 reg. 70.00
56.00

ANEW REVERSALIST

Complete Renewal Day Lotion Broad Spectrum SPF 25
Lightweight lotion. 50 ml
102-973-4
reg. 56.00
32.99



Complete Renewal Express Dual Eye System
Helps reduce the look of crow's feet. Eye cream, 15 g; brightening veil, 2.5 g 435-858
reg. 56.00
32.99



Complete Renewal Day Cream Broad Spectrum SPF 25
Renews the look of skin throughout the day. 50 g
432-025
reg. 56.00
32.99



Complete Renewal Night Cream
Wake up to renewed, refreshed and restored skin. 50 g
431-954
reg. 56.00
32.99



ANEW VITALE

Day Lotion Broad Spectrum SPF 25
Leaves skin feeling hydrated and looking energized. 50 ml
103-988-9
reg. 56.00
32.99



Eye Gel Cream
Eyes look instantly refreshed. 15 g 406-441
reg. 56.00
32.99
LAST TIME IN BROCHURE WHILE SUPPLIES LAST



Day Cream Broad Spectrum SPF 25
Evens skin tone and improves clarity. 50 g 101-067-3
reg. 56.00
32.99



Night Cream
Renews and energizes dull, tired skin. 50 g
406-566
reg. 56.00
32.99



ANEW HYDRA FUSION

Gel Cream

Provides 72 hours of long-lasting hydration. Skin appears smoother, refreshed and plumped with hydration. 50 g **220-387-9**
reg. 48.00
26.99

1.5% Hyaluronic Acid Serum

Three molecular sizes of hyaluronic acid penetrate surface layers for bounce-back skin. Visibly plumps skin with 2X more moisture. 30 ml **221-428-0**
reg. 62.00
34.99

De-Puffing Eye Serum

Eyes appear refreshed with hyaluronic acid, caffeine and raspberry antioxidant. Ceramic tip cools for an instant refreshing feeling. 15 ml **220-388-1**
reg. 48.00
26.99

Consult our online Skin Care Advisor to find a regimen that's right for you.
avonskincareadvisor.ca

ANEW HYDRA FUSION



Cleansing Micellar Water

Gently lifts dirt, oil and makeup while boosting hydration. 300 ml **220-388-3**
reg. 20.00
11.49



Daily Beauty Defense Broad Spectrum Sunscreen Lotion SPF 50

Use after moisturizing. With SPF 50, Avon's highest sunscreen protection. 50 ml **221-070-7**
reg. 48.00
26.99

Nighttime Facial Treatment

Increases moisture by 3X. With nourishing shea butter beads. Relaxing rose scent. 50 g **220-851-5**
reg. 48.00
26.99



ANEW VITAMIN C

**ILLUMINATES DULL,
TIRED SKIN TO LOOK
VISIBLY ENERGIZED.**



Brightening Serum
Skin looks visibly energized and brightened with the power of 10% pure vitamin C. Use AM/PM. 30 ml
220-694-4
reg. 62.00
34.99

ANEW VITAMIN C

**SKIN INSTANTLY
FEELS SOFTER
AND LOOKS BRIGHTER.**



Warming Peel
Dual exfoliation, with vitamin C flakes and natural seeds, gently buffs skin with a warming sensation when activated with water, opening pores to remove impurities. 100 ml
221-072-6
reg. 38.00
22.99

**REDUCES THE SIGNS
OF FATIGUE AROUND
THE EYES.**



Brightening Eye Cream
Reduces the appearance of dark circles and leaves under-eye area looking brighter and more even-toned. 15 ml
221-940-3
reg. 48.00
26.99

**VISIBLY PLUMPS
AND SMOOTHS LIPS
AND KEEPS YOUR POUT
LOOKING YOUNG.**



Antioxidant Lip Treatment
Smooth, colourless finish. Can be worn alone or under your favourite lip colour. Packed with vitamins C and E. 3.8 g
222-256-6
reg. 20.00
11.99





Eclat D'or Youth Activating Massager

Chrome-plated roller. Deeply kneads the curvature of your face and décolletage to help revive and tighten tired, stressed skin. 15 cm L.

Use AM/PM.
221-932-0
 reg. 70.00
55.00



ROTATES 360°



MASSAGER

Stimulates circulation and promotes the absorption of serums and moisturizers.

TO USE:

After applying serum and other skin care products, grip handle and gently roll upward and outward over forehead, cheeks and neck.



AVON
 Eclat D'or

RETINOL POWER

Retinol is the #1 anti-wrinkle ingredient recommended by dermatologists.

**SPECIALLY DESIGNED
 TO SMOOTH THE
 LOOK OF LINES AROUND
 THE FOREHEAD AND MOUTH.**

Line Eraser with Retinol Targeted Treatment

In one week deep wrinkles appear resurfaced*. Use PM. 20 ml **108-727-4**
 reg. 56.00
31.99



Line Eraser with Retinol Treatment

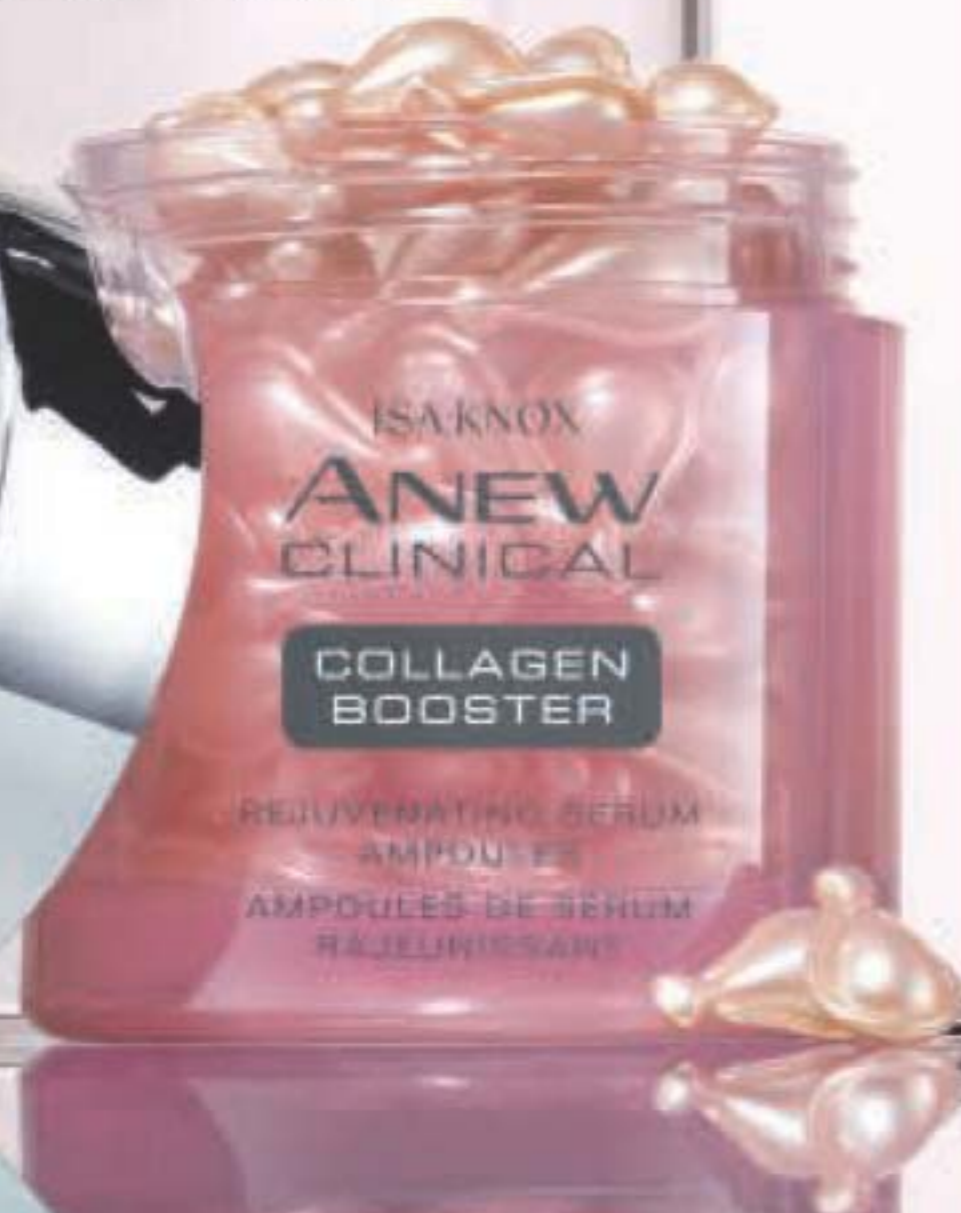
100% of women showed improvement in the look of fine lines and wrinkles*. Use AM/PM. 30 g **108-727-3**
 reg. 63.00
37.99

**SMOOTHS AWAY
 OVERALL FINE LINES
 AND WRINKLES.**

*Based on a clinical study.

jump-start
collagen production
and see the look
of youthfully
re-plumped skin

Clinical
results show
in 2 weeks
wrinkles are
significantly
diminished.
Skin looks
firmer,
more elastic.



SKIN LOOKS
INSTANTLY SMOOTHER.

**Isa Knox Anew
Clinical Collagen Booster™
Rejuvenating Serum
Ampoules**

With a powerful peptide
blend that visibly boosts the
body's natural production of
collagen. Vegan. Hypoallergenic.
Clinically/dermatologist-tested.
Use 1 ampoule each AM & PM.
60 ampoules, 0.22 ml each.

221-391-4
reg. 88.00
69.99

AT-HOME SKIN-RESURFACING
ALTERNATIVE TO
MICRO-DERMABRASION
AND MICRONEEDLING
PROCEDURES.

**Isa Knox Anew
Clinical Collagen Booster™
Microneedling Polisher Exfoliant**

A highly effective combination
of gentle exfoliators polishes
away dull skin cells, diminishes
the look of fine lines and
wrinkles, and improves the
appearance of pores. Skin looks
visibly smoother, younger, more
radiant. Use PM up to 3X per
week. 50 ml

221-459-9
reg. 48.00
26.99



ANEW

SKIN LOOKS LIFTED FROM EVERY ANGLE.



UNIQUE ROLLER BALL APPLICATOR FEELS ESPECIALLY UPLIFTING.

Clinical Infinite Lift Targeted Contouring Serum
With skin-tightening peptides. 30 ml
442-280
reg. 63.00
37.99

ANEW

Clinical ThermaFirm Face Lifting Cream
Formulated with a combination of hydrolyzed plant proteins and natural extracts. Moisturizes dry skin as it firms. 30 ml **220-222-5**
reg. 56.00
31.99



DIMINISHES THE LOOK OF FINE LINES, WRINKLES AND SUN SPOTS.

Skinvincible Deep Recovery Cream
Fragrance-free for sensitive skin. Use PM. 30 g **108-951-8**
reg. 56.00
32.99



SEE YOUR FINE LINES INSTANTLY PLUMPED OUT!

Clinical Advanced Wrinkle Corrector
Moisturizes dry skin while it diminishes the look of wrinkles. 50 ml **430-152**
reg. 56.00
31.99



SPF 50
Avon's highest sunscreen protection

POWERFUL SPF AND 24 HOURS OF MOISTURE.

Skinvincible Day Lotion Broad Spectrum SPF 50
Fragrance-free for sensitive skin. Use AM. 30 g
108-951-9
reg. 56.00
32.99





MINIMIZES THE APPEARANCE OF SUN SPOTS, FINE LINES AND POST-ACNE MARKS.

ANEW

LIKE A PRO GLYCOLIC PEEL...
BUT BETTER!*

Clinical Extra Strength Retexturizing Peel

See how radiant and smooth your skin will look. 30 fragrance-free pads. **120-005-5**
reg. 56.00
31.99



*In 6 out of 8 attributes, tested over a 7-week period.



LONGER, FULLER-LOOKING
LASHES IN JUST WEEKS!

Clinical Unlimited Lashes Lash & Brow Activating Serum**

84% of women agreed lashes look longer and fuller†. Apply only once daily, in the evening. Ophthalmologist-tested. 3 ml **220-342-0**
reg. 84.00
45.00

**Anew Clinical Unlimited Lashes is not intended to reverse or reduce hair loss or grow hair.
†Based on an 8-week consumer-perception study.

ANEW

UNEVEN SKIN?
LOOK NO FURTHER!

Clinical Absolute Even Multi-Tone Skin Corrector

Reduces the look of seven common problems: dark spots, uneven skin tone, post-acne marks, brown patches, blotchy red patches, freckles and sallowness. 30 g **406-425**
reg. 62.00
34.99



SEE THE LOOK OF DARK CIRCLES
VANISH BEFORE
YOUR EYES.

Clinical Absolute Even Dark Circle Corrector
Lighten up! Like a magic wand, it makes eyes look instantly brighter. 15 g **107-757-6**
reg. 56.00
31.99

RETEXTURIZES
SKIN IN JUST
ONE NIGHT.

Clinical Resurfacing Expert Smoothing Fluid

Transforms skin to look younger, smoother and more revitalized. 30 g **100-760-9**
reg. 62.00
34.99



IT MOISTURIZES
AND EXFOLIATES.
ALL IN ONE.

AHA Refining Cream

It's so mild, you can use it every day. Use after cleanser, as your moisturizer. 50 g **110-237-4**
reg. 56.00
31.99



MINI SIZES. BIG BENEFITS.

Try-it sizes that help revive your youthful look for smoother, brighter and firmer-looking skin.

Ultimate Multi-Performance Day Cream Broad Spectrum SPF 25
15 g **122-904-5**
reg. 21.00
11.99

Ultimate Multi-Performance Night Cream
15 g
122-357-0
reg. 21.00
11.99

diminishes the look of fine lines and wrinkles



restores a radiant and youthful appearance

Platinum Day Cream SPF 25
15 g **244-708**
reg. 21.00
11.99

Platinum Night Cream
15 g
106-722-2
reg. 21.00
11.99

visibly lifts and firms the look of jawline



overnight, skin appears smoother

Anew Clean Illuminating Rich Cleansing Foam
Leaves skin feeling renewed and radiant. 150 ml
112-161-9
reg. 17.00
9.99

USE THIS BRUSH WITH YOUR FAVOURITE ANEW CLEANSER TO TURBOCHARGE YOUR CLEANSING ROUTINE.

FOR NORMAL/COMBINATION SKIN

VIBRATING BRUSH CLEANSSES 5X BETTER*

❖ **Anew Clean Cleansing Brush**
Includes one brush head. Requires two AA batteries (not included). 17 cm L x 5 cm W. Plastic with nylon bristles.
110-379-7
reg. 58.00
34.99

Anew Clean Cleansing Brush Refills
Plastic with nylon bristles. 5 cm diam. **110-384-7**
reg. 23.00
14.99 SET OF 2

FOR NORMAL/DRY SKIN

Anew Clean Comforting Cream Cleanser & Mask
Leaves skin looking and feeling refreshed. 150 ml
109-260-6
reg. 17.00
9.99

*Versus cleansing by hand. Based on a clinical study with an ordinary cleanser. Note: Brush vibrates, but does not spin.

ANEW NEUTRALIZE ANTI-POLLUTION



GENTLY REMOVES DIRT AND IMPURITIES IN TARGETED AREAS.

Charcoal Mask Stick

The powerful combination of charcoal and kaolin clay helps absorb toxins and soothe irritated skin. Use 2-3 times a week. Rinse off. 50 g
221-062-2
 reg. 30.00
19.99
 LAST TIME IN BROCHURE WHILE SUPPLIES LAST



Charcoal Pore Strips

Gently and instantly removes dirt, oil and other pollutants to reveal fresh, clean skin. Includes 6 nose strips.
221-070-8
 reg. 16.00
9.99
 LAST TIME IN BROCHURE WHILE SUPPLIES LAST

DRAWS OUT DEEP-DOWN DIRT AND IMPURITIES.



SOOTHES IRRITATED SKIN AND VISIBLY REDUCES BLOTCHES.

Serum

Creates an invisible shield to help block damaging pollutants that cause signs of premature aging. 30 ml
221-051-4
 reg. 46.00
29.99
 LAST TIME IN BROCHURE WHILE SUPPLIES LAST

AVON SOLUTIONS got a skin concern? we've got an easy solution!

SKIN CARE



NOW 50% MORE NOURISHING MOISTURE CREAM!

NEW

Bonus-Size Nurtura Replenishing Cream

Combats dryness and flakiness by supplying skin with the moisture it needs. 75 ml
222-703-5
 reg. 21.00
13.49

Nurtura Replenishing Cream

50 ml
115-893-9
 reg. 14.00
8.99



NOW 50% MORE SMOOTHING AND FIRING CREAM!

NEW

Bonus-Size Dramatic Firming Cream

With collagen for firmer, smoother-looking skin. 75 ml
222-703-4
 reg. 21.00
13.49

Dramatic Firming Cream

50 ml
916-07
 reg. 14.00
8.99

SPF 15 PROTECTS AGAINST HARMFUL SUN RAYS



Tinted Moisture Shield SPF 15

Adds rich moisture to dry skin and gives skin a sheer hint of colour for a sun-kissed glow. 50 ml
439-582
 reg. 14.00
8.99

WITH GRAPEFRUIT EXTRACT



Banishing Cream Skin Discoloration Improver

Helps reduce the appearance of unwanted dark spots and discolourations. 75 ml
917-47
 reg. 14.00
8.99

WITH CHIA SEED EXTRACT



NEW

Oil-Balancing Cream

Refreshing gel-cream eliminates excess shine and minimizes the appearance of pores. 50 ml
222-703-3
 reg. 19.00
10.49

WITH SUNFLOWER SEED EXTRACT



NEW

Anti-Aging Cream

Moisturizing formula works to visibly smooth the appearance of fine lines and wrinkles. 50 ml
222-703-2
 reg. 19.00
10.49



**GIFT YOUR SKIN
WITH RICH MOISTURE**

AVON CARE

**WITH SOYBEAN TO HELP SOFTEN ROUGH,
DRY SKIN FOR LONG-LASTING SMOOTHNESS.**

SKIN CARE



**Rich Moisture Comforting
Nourishing Cream**

Designed for the gentle skin on your face. Hypoallergenic. Dermatologist-tested. Non-comedogenic. 200 ml **220-341-5** reg. 10.00

**LIMITED
TIME OFFER
6.99**



NEW

Rainbow Collection

Pastel multicolour glass or plastic stones set in goldtone.

Necklace

42 cm L with 9 cm extender. Pendant, 4 cm diam. **222-803-0**
reg. 17.99
13.99

Adjustable Bracelet

One size fits most. 5 cm L bar. **222-803-2**
reg. 17.99
13.99

❖ **Dial Watch**

Neutral, leather-like strap, 23 cm L with 36 mm diam. case. **222-803-6**
reg. 64.99
49.99



Ring sizer, page 161.



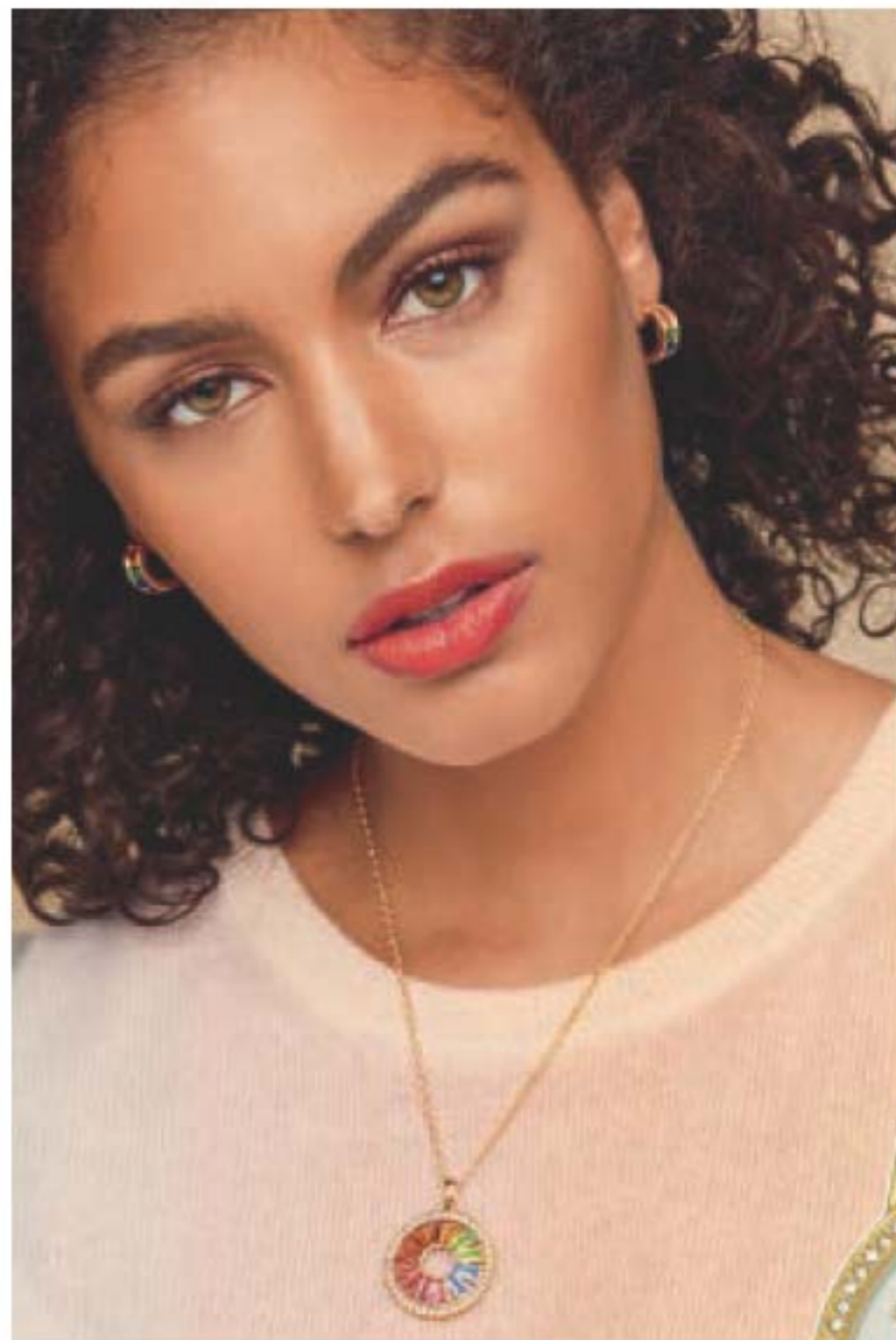
2-ring set

Hoop Earrings

Pierced, 2 cm diam. **222-803-1**
reg. 17.99
13.99

Ring

Two-ring set. With pavé band.
6 **222-803-3**
8 **222-803-4**
10 **222-803-5**
reg. 23.99
18.99 the set



adjustable pull-cord



full-spectrum sparkle

A rainbow light softens your look with pastel hues.



a sweeter sparkle

A honey-yellow twinkle enhances your radiance.

NEW

Sparkling Champagne Long Necklace

Champagne-coloured beads set in silvertone. 76 cm L with 9 cm extender. **222-797-5**
reg. 31.99
23.99



necklace and earring set



Ring sizer, page 161.



NEW

Sparkling Champagne Collection

Champagne-coloured stones set in silvertone.

❖ Two-Tone Accent Link Watch

Two-tone metal bracelet, 19 cm L with 32 mm diam. case. **222-798-1**
reg. 69.99
55.99



Necklace and Earring Set

Necklace, 42 cm L with 9 cm extender. Pendant, 3 cm L. Pierced studs, 2 cm L. **222-797-4**
reg. 27.99
20.99 the set

Ring

6 **222-797-6**
8 **222-797-7**
10 **222-797-8**
reg. 17.99
13.99



stones with meaning

From classic symbols to supposed healing powers, discover the secret of gemstone jewellery.



Sodalite
Known for bringing about balance, harmony and trust with a grounding energy.



Rose Quartz
Said to inspire forgiveness, compassion and unconditional love.



Aventurine
Known to open the spirit to confidence, luck and accomplishing goals.



Amethyst
Said to instill feelings of understanding, calmness, trust and good will.



Rose Quartz 222-790-0 Sodalite 222-789-9 Amethyst 222-790-1

NEW

Healing Stone Shaky Necklace
Genuine gemstones with accent charm.
Chain, 41 cm L with 10 cm extender.
reg. 23.99
18.99 each



Rose Quartz 222-789-2 Aventurine 222-789-3



Sodalite 222-789-1 Amethyst 222-789-4

NEW

Stud Earring Pack
3-piece sets with genuine gemstones. Pierced.
reg. 20.99
15.99 each pack



Rose Quartz 222-789-6



Sodalite 222-789-5



Aventurine 222-789-7



Amethyst 222-789-8

NEW

Healing Stone Adjustable Bracelet
Genuine gemstones with accent charms.
Adjustable pull cord; one size fits most.
Stone, 2 cm L.
reg. 23.99
18.99 each



Rose Quartz 6 222-790-8 Sodalite 6 222-790-5 Amethyst 6 222-790-2
8 222-790-9 8 222-790-6 8 222-790-3
10 222-791-0 10 222-790-7 10 222-790-4

Ring sizer, page 161.

NEW

Healing Stone Ring
Genuine gemstones with accent charm. Stone, 2 cm L.
reg. 19.99
16.99 each

NEW

Healing Stone Pendant Necklace

Goldtone with genuine semi-precious stones. Necklace, 61 cm L with 9 cm extender. Pendant, 6 cm L.

Sodalite

Said to bring balance, harmony and trust into your life with a grounding energy.

222-688-8

Aventurine

Said to open the spirit to confidence, luck and the manifestation of goals.

222-689-0

Rose Quartz

Said to spark forgiveness, compassion and unconditional love.

222-688-9

Grey Agate

Said to build up your strength, increase focus and provide stability.

222-689-1

reg. 31.99

23.99 each



genuine semi-precious stones

the power of gemstones

As stone is natural, colours may vary.

NEW

Charming Layered Bracelet

With metal charms, faux stones and leather-like cord. One size fits most.

reg. 27.99

20.99 each

NEW

Charming Stacking Ring Set

Silvertone 5-ring set.

reg. 23.99

18.99 each set



XOXO (rose goldtone/purple)

222-687-6



Hearts (silvertone/red)

222-687-8



Lock & Key (goldtone/black)

222-687-7

ANY WAY YOU STACK IT, OUR COLLECTIONS ALWAYS MAKE A PERSONAL CONNECTION.



XOXO

6 **222-688-9**
8 **222-688-0**
10 **222-688-1**



Heart

6 **222-688-5**
8 **222-688-6**
10 **222-688-7**



Key

6 **222-688-2**
8 **222-688-3**
10 **222-688-4**

5-ring sets

Ring sizer, page 161.



necklace & earring set

NEW

**Birthstone
Necklace and
Earring Set**

Silvertone with
coloured glass
stones. Chain,
42 cm L with 9 cm
extender. Pierced
drop earrings,
3 cm L.

reg. 23.99

18.99

each set

- | | |
|--|---|
| 
January
(protection)
222-787-4 | 
February
(wisdom)
222-787-5 |
| 
March
(serenity)
222-787-6 | 
April
(strength)
222-787-7 |
| 
May
(hope)
222-787-8 | 
June
(love)
222-787-9 |
| 
July
(vitality)
222-788-0 | 
August
(beauty)
222-788-1 |
| 
September
(truth)
222-788-2 | 
October
(healing)
222-788-3 |
| 
November
(joy)
222-788-4 | 
December
(friendship)
222-788-5 |

say it with jewellery

Every piece has something to say.
Find what speaks to your soul.



NEW

**❖ Inspirational
Strap Watch**

32 mm diam. goldtone
case with "Love Life"
on dial. 23 cm L strap.

222-789-0

reg. 47.99

36.99

NEW

**Inspirational Pull
Cord Bracelet**

CZ accent stone.
Adjustable pull-cord;
one size fits most.

Believe (silvertone)

222-788-9

Breathe (rose goldtone)

222-788-7

Love (goldtone)

222-788-8

reg. 15.99

11.99 each

rosé & pavé

ELEGANT ROSE GOLD WITH PAVÉ RHINESTONES IS RIGHT ON TREND.

NEW! Rose Goldtone and Pavé Collection
Sparkling pavé set in rose goldtone.

Chandelier Earrings
4 cm L drop.
Pierced.
222-682-8
reg. 15.99
11.99

Criss Cross Ring
6 222-683-1
8 222-683-2
10 222-683-3
reg. 23.99
18.99

Ring sizer, page 161.



❖ **Link Watch**
Rose goldtone with genuine mother-of-pearl dial. 18 cm L with 23 mm diam. case. 222-683-0
reg. 69.99
55.99



Adjustable Bracelet
Adjustable pull-cord; one size fits most. 222-682-9
reg. 27.99
20.99



necklace & earring set



Necklace and Earring Set
Necklace, 42 cm L with 9 cm extender. Pierced stud earrings. 222-682-7
reg. 27.99
20.99
the set



green light

GO FOR HEAD-TURNING GLAMOUR WITH THE STRIKING LOOK OF EMERALDS.

NEW! Majestic Green Collection
Emerald-coloured cut stones set in goldtone with rhinestone accents.

Necklace and Earring Set
Necklace, 42 cm L with 9 cm extender. Pierced earrings, 1 cm L. 222-683-5
reg. 27.99
20.99 the set

Layered Statement Ring
6 222-683-7
8 222-683-8
10 222-683-9
reg. 19.99
16.99



Stretch Bracelet Set
Glass beads and goldtone accents. One size fits most. 222-684-1
reg. 31.99
23.99 the set



necklace & earring set



3-bracelet set

Beaded Necklace
Glass beads. 42 cm L with 9 cm extender. 222-684-0
reg. 69.99
55.99

❖ **Watch**
Goldtone with green leather-like strap, 23 cm L. 23 x 27 mm case. 222-683-6
reg. 69.99
55.99



jet set

THE LOOK OF ONYX ADDS DRAMA TO THIS COLLECTION.

NEW! Modern Jet Collection
SILVERTONE WITH JET-COLOURED BEADS.

Necklace and Earring Set
Longest layer: 46 cm L with 9 cm extender. Pierced hoops, 5 cm diam.
222-682-1
reg. 64.99
49.99 the set

Ring
3 cm L.
6 **222-682-3**
8 **222-682-4**
10 **222-682-5**
reg. 19.99
16.99



Layered Bracelet
Layered cord with silvertone beads. 18 cm L with 3 cm extender.
222-682-2
reg. 19.99
16.99



necklace & earring set

❖ **Strap Watch**
Leather-like strap, 23 cm L with 34 mm diam. case. **222-682-6**
reg. 48.99
37.99



NEW! Modern Pearly Collection
Glass pearlesque stones.

Layered Choker
Longest layer: 43 cm L with 9 cm extender.
222-680-1
reg. 31.99
23.99

Earring Pack
Stone and pearlesque studs and 3 cm diam. hoops. Pierced.
222-681-9
reg. 19.99
16.99 the pack

Ring Set
3-ring set.
6 **222-680-4**
8 **222-680-5**
10 **222-680-6**
reg. 17.99
13.99 the set

❖ **Strap Watch**
Off-white leather-like strap, 23 cm L. Silvertone 37 mm diam. case with rhinestone accents.
222-682-0
reg. 44.99
34.99

Stretch Bracelet
One size fits most.
222-680-2
reg. 27.99
20.99



pearl up

CLASSIC FAUX PEARLS ARE A MUST, DAY AND NIGHT.



3-pair set



set of 3



Ring sizer, page 161.



show your metal



necklace & earring set

Available in goldtone and silvertone (page 158 only).

NEW! Big Link Necklace and Huggie Earring Set
Chain, 42 cm L with 10 cm extender. Pierced hoop earrings, 1 cm diam.

Goldtone **222-642-0**
Silvertone **222-642-1**
reg. 54.99
42.99 each set

also available in silvertone

NEW! Everyday Hoop Earrings
Pierced. 6 cm diam.

Goldtone **222-642-2**
Silvertone **222-642-3**
reg. 20.99
15.99 each pair



NEW! Everyday Layered Bracelet
19 cm L with 3 cm extender.

Goldtone **222-642-4**
Silvertone **222-642-5**
reg. 27.99
20.99 each



❖ **NEW! Bold Link Watch**

20 cm L with a 21 x 34 mm case.
Goldtone **222-642-7**
Silvertone **222-642-8**
reg. 62.99
47.99 each



Silvertone (page 159 only).

NEW! Modern Chic Layered Necklace

Silvertone layered necklace with beads. 61 cm L with 9 cm extender. **222-643-3**

reg. 54.99
42.99

NEW! Mixed Metals Earring Pack

6-piece stud and hoop pack. Pierced. Largest hoop, 4 cm diam.; smallest hoop, 3 cm diam. **222-643-1**

reg. 31.99
23.99 the pack

6-pair earring set



❖ **NEW! Rhinestone Accented Silver Strap Watch**

Metallic leather-like strap, 23 cm L. Silvertone case with rhinestone accents, 39 mm diam.

222-643-4
reg. 48.99
37.99



NEW! Modern Chic Adjustable Bracelet

Silvertone with beads. One size fits most.

222-643-2
reg. 27.99
20.99



adjustable pull-cord

STERLING ELEGANCE

Guaranteed with .925 quality, our sterling styles are over 90% pure silver for looks that last a lifetime.



NEW

Sterling Silver Everyday Dainty CZ Collection
Sparkling round-cut cz's.

Necklace
46 cm L with 3 cm extender. 2 carat equivalent cz..
222-804-1
55.99

Stud Earrings
3 and 5 mm cz's. Pierced.
222-804-0
49.99

CZ Ring
4 mm cz.
5 **222-804-2**
6 **222-804-3**
7 **222-804-4**
8 **222-804-5**
9 **222-804-6**
10 **222-804-7**
42.99



NEW

Sterling Silver Green Amethyst Collection

Unique green-coloured amethyst stones with rhinestone accents.

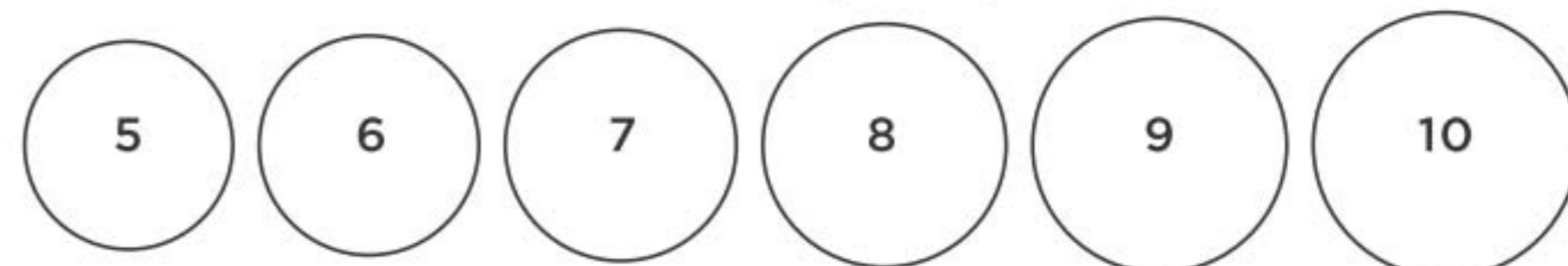
Pendant Necklace
46 cm L with 3 cm extender. 2 carat equivalent marquise-cut stone.
222-878-2
69.99

Stud Earrings
6 mm diam. Pierced.
222-878-1
69.99

Statement Ring
4 carat equivalent oval-cut stone.
5 **222-878-3**
6 **222-878-4**
7 **222-878-5**
8 **222-878-6**
9 **222-878-7**
10 **222-878-8**
77.99



FIND YOUR RING SIZE match your ring to one of these circles



FINE FILIGREE

Sterling silver with delicate
openwork.*



Ring sizer, page 161.

NEW

❖ **Filigree Cuff
Stone Accent Watch**
SILVERTONE with stone
accents. Open-hinged
bracelet; one size
fits most. 19 x 63 cm
case. **222-689-2**
reg. 64.99
49.99

*Watch is silvertone.

NEW

**Sterling Silver
Open Work Ring**
5 **222-695-1**
6 **222-695-2**
7 **222-695-3**
8 **222-695-4**
9 **222-695-5**
10 **222-695-6**
49.99



*genuine
amethyst*



NEW

**Sterling Silver
Fleur De France
Collection**
With genuine amethyst
and filigree details.

Necklace
46 cm L
with 3 cm
extender.
222-695-8
69.99

Ring
1.5 carat equivalent.
5 **222-696-0** 8 **222-696-3**
6 **222-696-1** 9 **222-696-4**
7 **222-696-2** 10 **222-696-5**
77.99

Drop Earrings
1 cm L
pierced drops.
222-695-9
64.99

DO GOOD, FEEL GOOD!



**SHOP FOR THE CAUSE
10% CONTRIBUTION**

AVON WILL DONATE 10% of the sale price from breast cancer fundraising products to the Avon Foundation for Women, Canada to support Avon Breast Cancer Crusade programs across the country. Learn more at avongivesback.ca

✿ Ribbon Charm Toggle Necklace
 Silvertone with assorted charms. 46 cm L with 9 cm extender. **222-446-4**
17.00

✿ Sterling Silver Pink CZ Statement Ring
 1.5 carat cz stone.
 5 **222-446-6**
 6 **222-446-7**
 7 **222-446-8**
 8 **222-446-9**
 9 **222-447-0**
 10 **222-447-1**
49.00

2-BRACELET SET

3-PAIR EARRING PACK

✿ Breast Cancer Stud Earring Pack
 3 pairs in silvertone with enamel and faux stones. Pierced, 1 cm L. **222-313-1**
17.00 the pack

✿ Pink Ribbon Charm Motivational Stretch Bracelet Set
 Set of two bracelets engraved with "Be the change" and "I can and I will." Silvertone with grey and pink beads and ribbon charms. Stretches to fit most. **222-446-5**
21.00 the set



❖ **NEW! Striped Tie-Sleeve Top**

Pullover top with adjustable tie sleeves. Rayon/polyester/spandex. Machine wash, dry flat. Centre back length: 66 cm on medium.

42.99 each

PLUS SIZE (1X, 2X, 3X):

Centre back length: 72 cm on 1X.

47.99 each

Blue

- XS (0-2) **222-647-3**
- S (4-6) **222-647-4**
- M (8-10) **222-647-5**
- L (12-14) **222-647-6**
- XL (16) **222-647-7**
- 1X (18W-20W) **222-648-8**
- 2X (22W-24W) **222-648-9**
- 3X (26W-28W) **222-649-0**

Grey

- XS (0-2) **222-647-8**
- S (4-6) **222-647-9**
- M (8-10) **222-648-0**
- L (12-14) **222-648-1**
- XL (16) **222-648-2**
- 1X (18W-20W) **222-649-1**
- 2X (22W-24W) **222-649-2**
- 3X (26W-28W) **222-649-3**

Pink

- XS (0-2) **222-648-3**
- S (4-6) **222-648-4**
- M (8-10) **222-648-5**
- L (12-14) **222-648-6**
- XL (16) **222-648-7**
- 1X (18W-20W) **222-649-4**
- 2X (22W-24W) **222-649-5**
- 3X (26W-28W) **222-694-6**



STUDIO
1886

WINTER CHILL OUT

Keep it cool and cozy. It's your year.
Your style. Your kind of casual.



NEW

❖ **Envelope Neck Top**

Tan pullover top with envelope neck and button detail. Polyester/rayon/spandex. Centre back length: 64 cm on medium; 69 cm on 1X. Machine wash and dry.

- | | |
|----------------------------|------------------|
| XS (0-2) 222-657-1 | 1X (18W-20W) |
| S (4-6) 222-657-2 | 222-657-6 |
| M (8-10) 222-657-3 | 2X (22W-24W) |
| L (12-14) 222-657-4 | 222-657-7 |
| XL (16) 222-657-5 | 3X (26W-28W) |
| 63.99 | 222-657-8 |
| | 68.99 |

Soft textures. Cozy neutrals. Comfy fit. Studio 1886 has redefined casual on your terms.

❖ **NEW! Scarf Neck Top**

Pink pullover with scarf-neck design and three-button detail. Rounded hem with side slits. Polyester/rayon/spandex. Centre back length: 69 cm on medium; 75 cm on 1X. Machine wash, line dry.

- | | |
|----------------------------|-------------------------------|
| XS (0-2) 222-650-5 | 1X (18W-20W) 222-651-0 |
| S (4-6) 222-650-6 | 2X (22W-24W) 222-651-1 |
| M (8-10) 222-650-7 | 3X (26W-28W) 222-651-2 |
| L (12-14) 222-650-8 | 51.99 |
| XL (16) 222-650-9 | 46.99 |



Stay-at-home sophistication
for winter-weather days.



❖ **NEW! Side-Ruffle Pullover**

Oatmeal-coloured, long-sleeve pullover top with side ruffle detail and ribbed hem. Slight high/low hem. Polyester/spandex/rayon. Centre back length: 69 on medium; 74 cm on 1X. Machine wash, dry flat.

XS (0-2) **222-652-3**
S (4-6) **222-652-4**
M (8-10) **222-652-5**
L (12-14) **222-652-6**
XL(16) **222-652-7**
63.99
1X (18W-20W) **222-652-8**
2X (22W-24W) **222-652-9**
3X (26W-28W) **222-653-0**
68.99



❖ **NEW! Ribbed Cardigan with Lace Detail**

Grey ribbed open-front cardigan with lace detail on the back. Sleeve with button tab detail. Polyester/cotton/spandex. Centre back length: 76 cm on medium; 81 cm on 1X. Machine wash, dry flat.



XS (0-2) **222-651-3**
S (4-6) **222-651-4**
M (8-10) **222-651-5**
L (12-14) **222-651-6**
XL (16) **222-651-7**
54.99
1X (18W-20W) **222-651-9**
2X (22W-24W) **222-652-0**
3X (26W-28W) **222-652-1**
59.99



❖ **NEW! Printed Tie-Waist Dress**

Animal print long-sleeve dress with removable fabric tie at waist. Viscose/polyester. Centre back length: 97 cm on medium; 100 cm on 1X. Machine wash, dry flat.

XS (0-2) **222-655-5**
S (4-6) **222-655-6**
M (8-10) **222-655-7**
L (12-14) **222-655-8**
XL (16) **222-655-9**
69.99
1X (18W-20W) **222-656-0**
2X (22W-24W) **222-656-1**
3X (26W-28W) **222-656-2**
74.99

NEW

❖ **Cowl Neck Dress**

Grey pullover dress with cowl neckline and side seam pockets. Polyester/viscose/spandex. Centre back length: 97 cm on medium; 100 cm on 1X. Machine wash, dry flat.

XS (0-2) **222-658-7**
S (4-6) **222-658-8**
M (8-10) **222-658-9**
L (12-14) **222-659-0**
XL (16) **222-659-1**
56.99
1X (18W-20W) **222-659-2**
2X (22W-24W) **222-659-3**
3X (26W-28W) **222-659-4**
61.99

❖ **NEW! Drawstring Hooded Top**

Blue long-sleeve hooded top with drawstring detail at neckline. Rayon/polyester/spandex. Centre back length: 66 cm on medium; 71 cm on 1X. Machine wash, dry flat.

- XS (0-2) **222-649-7**
- S (4-6) **222-649-8**
- M (8-10) **222-649-9**
- L (12-14) **222-650-0**
- XL (16) **222-650-1**

39.99

- 1X (18W-20W) **222-650-2**
- 2X (22W-24W) **222-650-3**
- 3X (26W-28W) **222-650-4**

44.99

❖ **Everyday Jogger**

Black pull-on jogger with ribbed cuffs, side seam pockets and drawcord at waist. Cotton/polyester. Inseam: 74 cm on all sizes. Machine wash, dry flat.

- XS (0-2) **222-654-7**
- S (4-6) **222-654-8**
- M (8-10) **222-654-9**
- L (12-14) **222-655-0**
- XL (16) **222-655-1**

54.99

- 1X (18W-20W) **222-655-2**
- 2X (22W-24W) **222-655-3**
- 3X (26W-28W) **222-655-4**

59.99

FASHION SIZE CHART

SIZE	BUST	WAIST	HIP
XS 0/2	80 - 83 CM	62 - 65 CM	84 - 86 CM
S 4/6	85 - 89 CM	67 - 71 CM	90 - 94 CM
M 8/10	93 - 97 CM	75 - 79 CM	98 - 102 CM
L 12/14	100 - 104 CM	83 - 86 CM	105 - 109 CM
XL 16	108 - 112 CM	90 - 94 CM	113 - 117 CM
1X 18W/20W	118 - 123 CM	99 - 104 CM	122 - 127 CM
2X 22W/24W	128 - 133 CM	109 - 114 CM	132 - 137 CM
3X 26W/28W	138 - 144 CM	119 - 124 CM	142 - 147 CM

Visit avon.ca/fitguide for additional size and fit information.



❖ **NEW! Faux Fur Printed Jacket**

Animal print long-sleeve faux fur jacket with zip front and side pockets. Lined. Viscose/polyester. Centre back length: 57 cm on medium; 61 cm on 1X. Dry clean only.

- XS (0-2) **222-653-9** 1X (18W-20W)
- S (4-6) **222-654-0** **222-654-4**
- M (8-10) **222-654-1** 2X (22W-24W)
- L (12-14) **222-654-2** **222-654-5**
- XL (16) **222-654-3** 3X (26W-28W)

82.99

87.99

Win-win! Bring the street chic inside or take the at-home comfort outside.

NEW

❖ **Button Down Striped Tunic Shirt**

Blue/white stripe long-sleeve button down tunic shirt with side seam pockets and chest pocket. Cotton/polyester/rayon. Centre back length: 81 cm on medium; 85 cm on 1X. Machine wash, dry flat.

- XS (0-2) **222-656-3** 1X (18W-20W) **222-656-8**
- S (4-6) **222-656-4** 2X (22W-24W) **222-656-9**
- M (8-10) **222-656-5** 3X (26W-28W) **222-657-0**
- L (12-14) **222-656-6** **47.99**
- XL (16) **222-656-7**

42.99



Work at home style essentials that you'll wear everyday.



PACK OF 4

❖ **NEW! Fashion 4-Pack Tees**
Includes animal print, pink, grey and blue short-sleeve tees with rounded hem and front pocket. Cotton/polyester. Centre back length: 66 cm on medium; 71 cm on 1X. Machine wash, dry flat.

XS (0-2) 222-646-5	1X (18W-20W) 222-647-0
S (4-6) 222-646-6	2X (22W-24W) 222-647-1
M (8-10) 222-646-7	3X (26W-28W) 222-647-2
L (12-14) 222-646-8	54.99 pack of 4
XL (16) 222-646-9	49.99 pack of 4



❖ **NEW! Printed Sherpa Vest**
Printed faux sherpa vest with draped open front. Lined. Polyester. Centre back length: 76 cm on medium; 80 cm on 1X. Machine wash, line dry.

XS (0-2) 222-653-1	1X (18W-20W) 222-653-6
S (4-6) 222-653-2	2X (22W-24W) 222-653-7
M (8-10) 222-653-3	3X (26W-28W) 222-653-8
L (12-14) 222-653-4	66.99
XL (16) 222-653-5	61.99



NEW

❖ **Printed Poncho**
Printed hooded poncho with kangaroo pocket. Viscose/polyester/spandex. Centre back length: 71 cm on medium; 76 cm on 1X. Machine wash, dry flat.

S/M 222-657-9	1X/2X 222-658-4
L/XL 222-658-0	71.99
66.99	

❖ **NEW! Faux Suede Clog**

Tan slip-on clog with faux suede upper and faux fur insole. Metal buckle detail. Polyester/man-made materials.

6M 222-661-9 9M 222-662-2
7M 222-662-0 10M 222-662-3
8M 222-662-1 11M 222-662-4

55.99



❖ **NEW! Lace-up Fashion Sneaker**

White leather-like lace-up sneakers with colour accent. Man-made materials.

42.99 each pair

Blue	Animal Print
6M 222-661-3	6M 222-660-7
7M 222-661-4	7M 222-660-8
8M 222-661-5	8M 222-660-9
9M 222-661-6	9M 222-661-0
10M 222-661-7	10M 222-661-1
11M 222-661-8	11M 222-661-2

NEW

❖ **Black Flat Loafer**

Black loafer with silvertone hardware and cushion insole. Man-made materials.

6M 222-662-5 9M 222-662-8
7M 222-662-6 10M 222-662-9
8M 222-662-7 11M 222-663-0

56.99



❖ **NEW! Tall Riding Boot**

Black pull-on boot with full zipper inside and metal buckle detail on the outside. Shaft, 37 cm H; heel, 4 cm H. Man-made materials.

6M 222-660-1 9M 222-660-4
7M 222-660-2 10M 222-660-5
8M 222-660-3 11M 222-660-6

84.99

Winter reboot. From comfy kicks to tall boots, we've got you covered every step of the way.



❖ **NEW! Faux Suede And Knit Bootie**

Grey faux suede upper with knitted shaft. Faux sherpa lining and tie in back. Cushion Walk® insole for added comfort. Shaft, 28 cm H. Man-made materials.

6M 222-659-5 9M 222-659-8
7M 222-659-6 10M 222-659-9
8M 222-659-7 11M 222-660-0

64.99





PACK OF 2

❖ **2-Pack Everyday Leggings**

Includes black and grey full-length leggings with elastic waistband. Cotton/spandex. Inseam: 71 cm for all sizes. Machine wash, dry flat.

XS (0-2) **222-449-4**

S (4-6) **222-449-5**

M (8-10) **222-449-6**

L (12-14) **222-449-7**

XL (16) **222-449-8**

49.99 pack of 2

1X (18W-20W) **222-449-9**

2X (22W-24W) **222-450-0**

3X (26W-28W) **222-450-1**

54.99 pack of 2

TWO-PACK
one black, one grey

black

grey

No reason your basics can't look classic or fashionable.



PACK OF 2



❖ **NEW! Classic Unisex Slipper**

His or hers slip-on slippers with faux suede upper and faux sherpa lining. Man-made materials.

24.99 each pair

Tan

S (5-6) **222-538-7**

M (7-8) **222-538-6**

L (9-10) **222-538-5**

XL (11-12) **222-538-4**

XXL (13-14) **222-538-3**

Black

S (5-6) **222-511-1**

M (7-8) **222-511-2**

L (9-10) **222-511-3**

XL (11-12) **222-511-4**

XXL (13-14) **222-511-5**

UNISEX SIZE CHART

SIZE	WOMEN'S	MEN'S
S	5-6	-
M	7-8	5-6
L	9-10	7-8
XL	11-12	9-10
XXL	13-14	11-12



❖ **2-Pack Crew-Neck Pocket Tees**

Includes black and white tees with rounded hem, crew neckline and chest pocket detail. Cotton/polyester. Centre back length: 66 cm on medium; 71 cm on 1X. Machine wash, dry flat.

XS (0-2) **222-448-6**

S (4-6) **222-448-7**

M (8-10) **222-448-8**

L (12-14) **222-448-9**

XL (16) **222-449-0**

26.99 pack of 2

1X (18W-20W) **222-449-1**

2X (22W-24W) **222-449-2**

3X (26W-28W) **222-449-3**

31.99 pack of 2

**Stylish and comfortable
eco-friendly socks**



**PACK
OF 4
PAIRS**

NEW

❖ **Eco Friendly Socks - 4-Pack**

Low-cut socks. Lightweight, ideal to wear with flats or sneakers. Fits shoe sizes 6-10. Recycled polyester/rubber/spandex. Hand wash, lay flat to dry. **223-091-2**

16.99 the 4-pair pack

LIMITED QUANTITIES



ECO-FRIENDLY

Socks are made from recycled plastic bottles and can be still recycled after.

**Fashionable low cut designs with
crochet-style
tops and
comfortable
stretch.**



**TWO COLOURS
TO CHOOSE
FROM!**

NEW

❖ **Low Cut Crochet Sock**

Fits shoe sizes 6-10. Cotton/nylon/spandex. Hand wash, lay flat to dry.

Ivory **223-091-6**

Black **223-091-5**

6.99 each pair

LIMITED QUANTITIES

crochet style
adds a feminine
touch



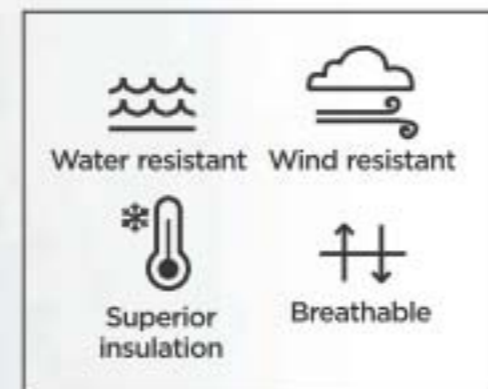
Keep out the February chills!

adjustable fixed hood

two-way front zipper

side slit pockets with snaps

rib knit cuffs



❖ **Verbio Black Hot Fused Puffer Coat**

Centre back length: 95 cm on medium; 97 cm on 1X. Polyester. Machine wash and dry.

XS 222-575-9	1X 222-576-4
S 222-576-0	2X 222-576-5
M 222-576-1	3X 222-576-6
L 222-576-2	reg. 250.00
XL 222-576-3	190.00

reg. 245.00
185.00

LIMITED QUANTITIES

VERBIO

Comfy parka in indigo blue.

adjustable fixed hood

2-way front zipper

drawstring at waist



❖ **Verbio Vintage Indigo Parka**

Indigo coloured mid-season parka. Centre back length: 82 cm on medium; 85 cm on 1X. Shell: polyester/cotton. Insulation: polyester. Machine wash and dry.

XS 222-575-1	1X 222-575-6
S 222-575-2	2X 222-575-7
M 222-575-3	3X 222-575-8
L 222-575-4	reg. 195.00
XL 222-575-5	145.00

reg. 190.00
140.00

LIMITED QUANTITIES

VERBIO



**CLEAN-UP
TIME**

KITCHEN ACCESSORIES

SCOUR POWER

NEW

❖ **Steel Wire Brush Set**
Steel wire brushes remove stubborn grease stains and caked on food residue from pots and pans. Handheld design with comfort-grip handle. Not for use on non-stick cookware. 10 cm H x 6 cm diam. Plastic/stainless steel. Hand wash. **222-815-0**
13.99 THE SET OF 3
LIMITED QUANTITIES



SET OF 3

the perfect tool
to get dishes
sparkling clean!



holds your
sponges and
steel wire
brushes



NEW

❖ **Stainless Steel Sponge Holder**
Attach to your faucet and adjust to desired height. 18 cm L x 10 cm W x 7 cm H. Stainless steel/plastic. Hand wash. **222-815-1**
20.99
LIMITED QUANTITIES



❖ **Multipurpose Wipes**
Free of bleach and chemical preservatives. Naturally derived formula with citric acid and pomegranate vinegar. Dermatologically-tested. Pomegranate scent. Resealable package. 60 multipurpose wipes.
223-134-2
10.00

❖ **Multipurpose Cleaning Spray**
Bleach-free, water-based nature-derived formula with baking soda and citric acid. Light citrus scent. Safe on non-porous surfaces! Free of phthalates, formaldehyde, chlorine, parabens and glycol ethers. Recyclable bottle. 400 ml
222-442-5
12.00

❖ **Dish Soap**
Free of six chemical preservatives. No animal testing or animal ingredients. Naturally derived formula with stain-removing citric acid and microbubbles. Each, 490 ml

Lemon & Verbena
222-445-2

Garden Basil
222-445-1
10.50 EACH

BIODEGRADABLE CONCENTRATED gel formulas



DISHES ARE DONE!



2-PIECE KIT

- Includes:**
- 1 scrubber handle with hook-and-loop fastener
 - 1 scrubber

NEW

❖ **Dish Scrubber Kit**
Get a handle on dirty dishes! 31 cm L x 7 cm W x 6 cm H. Plastic/foam.
222-910-6
12.00
THE 2-PIECE KIT

NEW

❖ **Dish Scrubber Refills**
Pack of 3 scrubber refills. Fits Cucina Dish Scrubber. 11 cm L x 7 cm W x 2 cm H. Foam. **222-910-7**

7.00 THE PACK OF 3 **PACK OF 3**



NOT A HINT OF LINT

removes lint, fur and more from clothing!



NEW

❖ **Fresh Fiji Lint Roller Kit**
Pick up lint, fur, hair and more in a quick roll! 5 cm diam. x 23 cm L. Plastic/paper.
222-910-8
6.99
THE 2-PIECE KIT
LIMITED QUANTITIES

2-PIECE KIT

- Includes:
- 1 handle
 - 1 lint roller

❖ **Fresh Fiji Lint Roller Refills**
Fits Fresh Fiji Lint Roller. 5 cm diam. x 10 cm L. Paper.
222-911-4
8.99
THE PACK OF 3
LIMITED QUANTITIES



PACK OF 3

NEW

❖ **Portable Lint Remover**
Ergonomically-designed handle for easy grip. Compact and lightweight. 8 cm L x 6 cm W. Iron.
222-817-3
10.99
LIMITED QUANTITIES

LAUNDRY ACCESSORIES

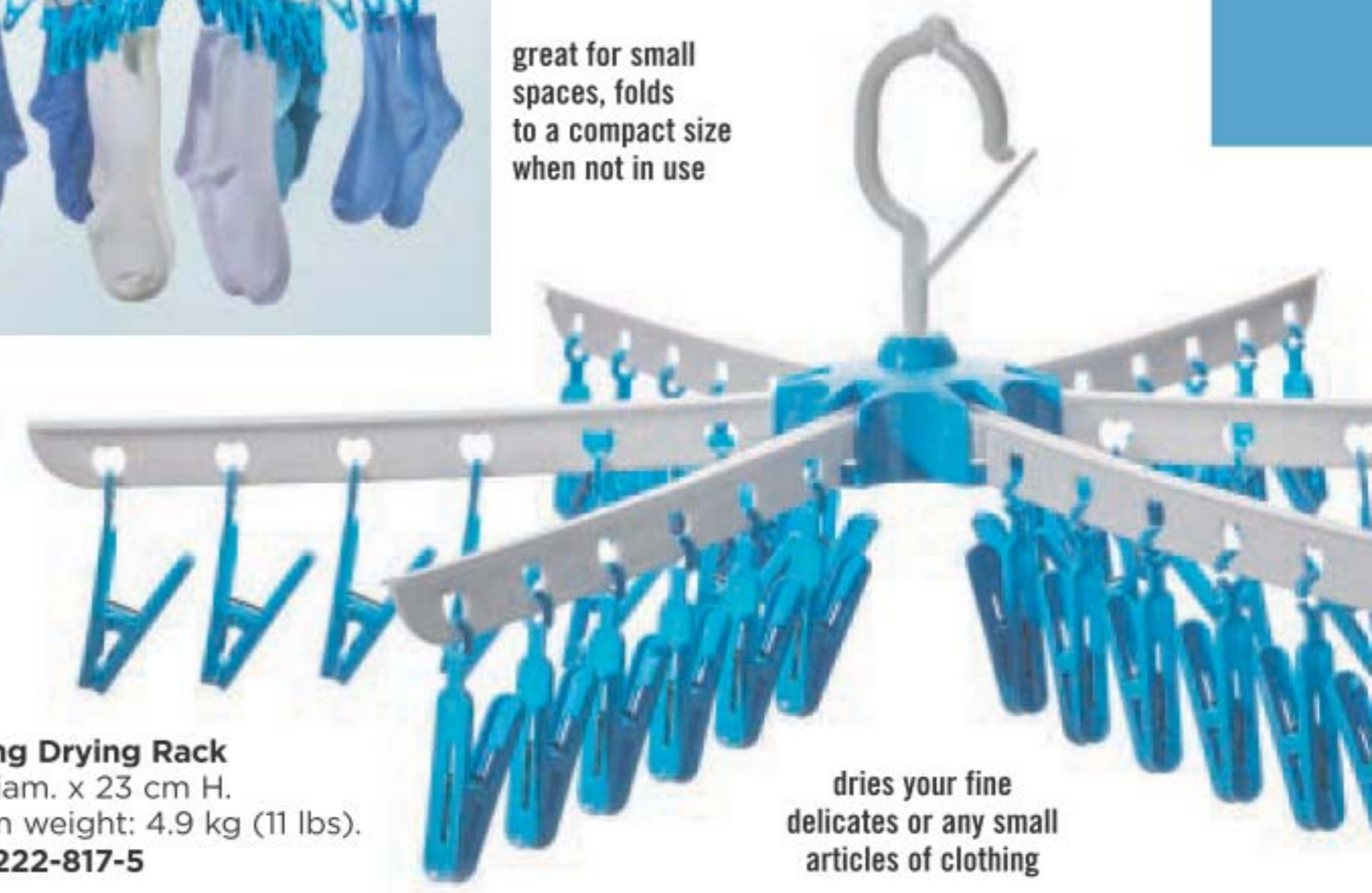


great for small spaces, folds to a compact size when not in use

NEW

❖ **Hanging Drying Rack**
60 cm diam. x 23 cm H. Maximum weight: 4.9 kg (11 lbs). Plastic.
222-817-5
15.99
LIMITED QUANTITIES

hook for hanging on closet rod, clothesline or garment rack



dries your fine delicates or any small articles of clothing



stops your colours from running

24 SHEETS

NEW

❖ **Anti-Dyeing Laundry Absorption Sheets**
24 sheets each, 11 cm W x 28 cm L. Use 1-2 sheets per wash, depending on size of load.
222-817-2
8.99 THE PACK OF 24 SHEETS
LIMITED QUANTITIES



Read and follow label directions and precautions.

FRESH FIJI

❖ Fabric Freshener*

With deodorizing green tea, persimmon and retinispora tree extracts. Leaves no residue. Not for use on leather, suede or fur. 17 ml
222-440-8
7.99



❖ Laundry Stain Remover*

Pre-treats and removes tough set-in stains with a powerful enzyme formula. Helps to remove stains better than just laundry detergent alone.

Spray

For direct application without damaging fabrics. 500 ml
222-485-0
13.99



Gel

For gentle scrubbing action. 220 ml
222-484-9
9.99

❖ Fabric Refresher with Wrinkle Release*

Freshen fabrics and smooth wrinkles. Each, 500 ml
Fresh: Clean laundry scent
222-445-0
Crisp: Vibrant aromatic scent
222-442-9
12.99 EACH



❖ Gel Bead Deodorizer*

Neutralize odours in small spaces while emitting a light fragrance with this diffuser, available in two uplifting scents. Each, 150 ml
Calming Lavender
222-445-3
Fresh Cotton
222-443-0
11.99 EACH

neutralizes odours for up to 70 days



FRESH FIJI

WASH MORE, FOR LESS

❖ Color Booster & Stain Remover*

Eliminates stains and odours, whitens whites and brightens colours, wash after wash. Formulated with peroxide and oxygen-based, colour-safe bleach. Works in all washers. For machine wash fabrics only. Free of optical brighteners, dyes, parabens, triclosan and mineral oil. Dermatologically-tested. Each, 2.2 litres **222-700-6**
62.99 THE PACK OF 3

cleaning power for a total of 228 loads!**

for HE (high efficiency washers)



SUPER-SIZED 3-PIECE VALUE PACK!

❖ 4X Super Concentrated Liquid Laundry Detergent*

Seven stain-removing enzyme-blend and 4X concentrated cleaning power in every drop for whiter and brighter clothes†. Prevents future stains with continued use. Works in all washers. For machine wash fabrics only. Dermatologically-tested. 1 litre.
222-941-2
20.99 EACH

NEW SCENT!

cleaning power for 63 loads**



for HE (high efficiency washers)

*Read and follow label directions and precautions.
 **Based on regular loads for standard machine.
 †Per drop vs. Fresh Fiji standard liquid laundry detergent.

❖ Sheet Detergent*

Removes stains with powerful enzymes. 100% water soluble. With baking soda and natural fragrance oils. Works in all washers. For machine wash fabrics only. Sheets can be cut depending on your laundry load. 30 sheets, each 23 x 20 cm
222-440-7
20.99

no measuring!
 30 fast-dissolving sheets for up to 60 loads



NEW

❖ **Homestar Foaming Toilet Bowl Cleaner***

Fights toilet rings and stains. Convenient pouch dispenser. Use every two weeks. Each pouch, 60 g

222-708-8
13.99

THE PACK OF 5

PACK OF 5

Powerful foam-cleansing action!
Pour in, flush later!



NEW

❖ **Homestar Disposable Toilet Bowl Brush Starter Kit**

A sparkling clean toilet is within reach! 38 cm L x 6 cm W. Plastic/foam.

222-775-2
14.99

THE KIT

2-PIECE KIT

Includes:

1 handle with brush **PLUS**
6 brush refills

brush is replaceable

SPARKLE CENTRAL

*Read and follow label directions and precautions.

HOMESTAR

PACK OF 12



NEW

❖ **Disposable Toilet Bowl Brush Refills**

Fits Homestar Toilet Bowl Brush handle. Pack of 12. Each, 9 cm L x 6 cm W x 4 cm D. Plastic/foam.

222-775-3
9.99

THE PACK OF 12

streak-free shine!



NEW

❖ **Glass Cleaner***

Keep windows, mirrors, glass and more sparkling clean. Removes dirt, grime and fingerprints. Quick-drying, anti-fogging formula.

500 ml
222-709-0
9.99

perfect for showers, tubs, toilets and sinks!

fresh green apple scent



NEW

❖ **Bathroom Cleaner***

Just spray, let sit and wipe away! Fights tough soap scum, limescale, calcium and grime. Triple-action low-pH formula safely breaks down and removes messes. Fresh green apple scent.

750 ml
222-708-9
12.99

❖ **Multipurpose Cleaner***

Bleach-free, triple-action power cleaner for the kitchen and beyond. With citric acid, orange oil and baking soda to remove stubborn water stains. Natural citrus scent. For use on nonporous surfaces only. 500 ml
222-442-2
11.99

❖ **Rangehood and Kitchen Degreaser***

Double-solvent solution blend for hard-to-remove grease stains on range hoods, stovetops, BBQ grills and more! Just spray and watch foaming bubbles go to work, then simply rinse. External oven use only. 480 ml
223-134-1
15.99



*Read and follow label directions and precautions. Package labels may vary.

NEW

❖ **Bathroom Scrubber Kit**

Scrub a dub! Get a deep down clean with an ergonomic scrubber. 14 cm L x 8 cm W. Plastic/foam.

Includes:

- 1 handle with hook-and-loop-fastener
- 1 scrubber

222-910-4
8.99

THE 2-PIECE KIT



❖ **Bathroom Scrubber Refills**

Disposable. Fits Homestar Bathroom Scrubber. 14 cm L x 8 cm W. Foam.

222-910-5

5.99 THE PACK OF 3



NEW

❖ **Microfibre Cloth Set**

Reusable, lint-free microfibre cloths won't scratch surfaces and can be used wet or dry. Ideal for the kitchen, home and car. Mitt is one size fits most. Machine wash, line dry. Polyester/polyamide.

Includes:

- 1 large towel: 102 cm L x 49 cm W
- 1 small towel: 71 cm L x 29 cm W
- 1 mitt: 21 cm L x 21 cm W

222-803-7

27.99 THE SET

MOP IT UP!

❖ **NEW! Mop Stick**

Full length, 1 metre. Head, 25 cm L x 10 cm W. Plastic/EVA/aluminum.
222-440-5
21.99



360° swivel head with cloth grippers and easy-grip handle

❖ **NEW! Disposable Mop Cloths**

Can be used with or without mop. Safe on most finished floors. 40 sheets each, 28 cm L x 21 cm W. Wet or dry cloths available.



bathroom bestie

Highly effective at eliminating toilet odours without the need for chemical-based sprays.



HOW TO USE:
Spray 3-5 times
into the toilet bowl
before you go.

❖ **Avon Pure Bathroom Bestie Essential Oil Spray**
When sprayed inside the bowl, the scent creates a film over water, trapping bad smells inside. Vegan. Not tested on animals. Petroleum/chlorine bleach/ammonia/phosphate-free. Made in Canada. 115 ml
222-529-2
reg. 26.00
21.00

Read and follow label directions and precautions. For a complete list of ingredients, visit avon.ca

car freshener

This special blend of pure essential oils targets and eliminates bad odours in your car.

❖ **Avon Pure Essential Oils Auto Spa Spray**
Get rid of funky car smells like athletic gear, wet car mats and pet odour. Long-lasting fresh scent of lemon, bergamot and juniper. Vegan. Not tested on animals. Petroleum/chlorine bleach/ammonia/phosphate-free. Non-toxic. Made in Canada. 115 ml **222-528-9**
reg. 24.00
19.00



HOW TO USE:
Spray onto fabric car seats, floor mats, carpets or trunk space.

Read and follow label directions and precautions. For a complete list of ingredients, visit avon.ca

good vibes are in the air

AVON PURE ESSENTIAL OILS



Scent your home and fill your space with the benefits of your favourite Avon Pure Essential Oil.

❖ **NEW! Avon Pure Diffuser**
LED light-up diffuser with three different settings releases a fine mist of essential oil and water into the air and helps refresh and purify your surroundings. 17 cm H. USB connection (USB power cord included).
222-928-9
42.00

Keep out of reach of children. Not for oral use. Do not use on skin or hair. Read and follow label directions and precautions. For a complete list of ingredients, visit avon.ca

Grapefruit
Natural energizer. Brightens up your day. Grapefruit peel oil.
222-528-8
24.00 or...



Lavender
Calms and soothes. Helps with balance and restfulness.
220-491-7
24.00 or...



Rosemary
Stuck in neutral? This will help you get going. Rosemary leaf oil.
222-565-9
24.00 or...



elevate your mood

Single oils to use with a diffuser. Add a few drops to a diffuser to experience the benefits.

- ❖ **Avon Pure Essential Oils**
- Paraben/gluten/phthalate/sulfate-free
 - Vegan
 - Made in Canada
- 10 ml

**CHOOSE ANY 2 FOR
34.00**

PAGE 197

To get the 2 FOR price, please order in multiples of 2.



Bodyguard
Gives you a boost with an all-natural, powerful blend of sweet almond, clove, lemon, cinnamon, eucalyptus and rosemary.
221-704-5

Travel Ease
Bon voyage! This carefully blended formula includes ginger, almond, sweet orange, bergamot, lavender, rosemary and peppermint.
222-427-8



Detox
Awakens your senses with a blend of sweet almond, juniper berry, lemon, peppermint, sweet fennel, rosemary and sandalwood.
221-631-8

Energize
Wakes you up from that mid-day slump. With sweet almond oil, grapefruit peel oil, sweet orange peel oil and rosemary leaf extract.
221-633-5

Focus
Helps boost alertness and concentration. With sweet almond oil, lemon peel oil and rosemary leaf extract.
222-249-0



De-Stress
Like yoga in a bottle...it helps calm you. With sweet almond oil, lavender and peppermint.
221-634-1

get rolling

Pop a rollette in your pocket or purse and instantly transform your day wherever you go with the perfect blend of oils.

HOW TO USE:
Apply roll-on directly to key areas of your skin (back of neck, temples, inside elbow) to experience the benefits.



❖ **Avon Pure Roll-On Essential Oils**
• Paraben/gluten/phthalate/sulfate-free
• Vegan
• Made in Canada
10 ml
reg. 24.00
21.00 each

Keep out of reach of children. Read and follow label directions and precautions. For a complete list of ingredients, visit avon.ca

Power your shake!

**WITH A NUTRIENT-RICH BLEND
OF 50 ORGANIC GREENS
AND WHOLE FOOD INGREDIENTS**

**30
SERVINGS**



Power Greens
Help your body get essential fatty acids, omega-3 and antioxidants for the maintenance of good health. Add one scoop to 240 ml (8 fl oz.) of water or almond milk. 300 g
221-595-7
reg. 35.00
ONLY 19.99
WHILE SUPPLIES LAST

**VEGAN
NON-GMO
GLUTEN-FREE**



Powered by plants

Satisfying protein supplement with sprouted quinoa and amaranth, yellow peas and globe artichokes.

**CANISTER FOR
EVERY DAY**



**CONVENIENT
SACHETS FOR
ON-THE-GO**



Plant Power Protein
17.6 g of protein for chocolate/18.3 g of protein for vanilla. Only 120 calories per serving. Provides essential amino acids for athletic support, and the maintenance of good health and digestive enzymes. For optimal taste, mix with almond milk or milk substitute of your choice.

10-Pack of Single-Serving Sachets
Each sachet, 30 g
Creamy Vanilla **220-536-5**
Rich Chocolate **220-536-4**
reg. 40.00
ONLY 29.99 each 10-pack
WHILE SUPPLIES LAST

15-Serving Canister
454 g
Rich Chocolate **220-536-3**
reg. 40.00
ONLY 34.99
WHILE SUPPLIES LAST

**CREAMY
VANILLA**



**RICH
CHOCOLATE**



SEE WHAT ESPIRA CAN DO FOR YOU: myespira.ca
For a complete list of ingredients, visit avon.ca



Live a more vibrant life, naturally.

ESPIRA

FEEL FULLER, LONGER.

Helps to temporarily support a feeling of fullness. To be used with a program of reduced calorie intake and increased physical activity to help weight management.



Hunger Block
60 vegetarian, gluten-free capsules. Take 2 capsules, three times daily with 240 ml (8 fl oz.) of water with a meal. **220-540-8**
reg. 30.00

ONLY 14.99

RELIEVE FATIGUE AND PROMOTE ALERTNESS.

Helps to temporarily relieve fatigue, promote endurance and enhance motor performance. Made with coffee fruit extract and clinically-studied caffeine from green tea.



Natural Energy
30 vegetarian, gluten-free capsules. Take 1 capsule daily. **220-536-9**
reg. 30.00

ONLY 14.99

ESPIRA health and wellness collection inspired by nature



BOOST ENERGY, NATURALLY.

Plant-based energy booster formulated with naturally sourced caffeine from green tea, guarana and coffee bean extracts.

Metabolism Boost
60 vegetarian, gluten-free capsules. Take 2 capsules daily. **220-540-7**
reg. 30.00

ONLY 14.99

IMPROVE YOUR SLEEP.

Naturally-sourced and non-habit forming, this supplement contains a proprietary combination of ingredients with melatonin to help reduce the time it takes to fall asleep.



Restful Sleep
60 vegetarian capsules. Take 2 capsules once a day, with food, 30 minutes before bedtime. **220-539-7**
reg. 24.00

ONLY 14.99



Promote your natural radiance and support your overall health and wellbeing with ESPIRA, our customized health and wellness collection.

NOW ONLY 14.99 EACH

UP TO 50% OFF

PAGES 202-203 LIMITED QUANTITIES

Hold that look!

From everyday natural to all-day glam, you've got style!



PERFECT PREP FOR SMOOTH BLOWOUTS

Styling Cream Gel
Create sleek styles or enhance natural curls with this workable styling cream gel with a light-hold, non-flaking formula that adds incredible shine and control to any style. Enriched with silk to strengthen hair. 177 ml **222-521-4** reg. 29.00 **24.00**



SPRAY, SCRUNCH AND HOLD!

Enviro 54® Natural Hold Hair Spray
For brushable hold of any style and texture. Lightweight and fast-drying with no build-up. Anti-humidity. Thermal protectant ideal for blow drying. With silk to help build hair's strength and resilience, and natural botanicals to add volume and enhance shine. Paraben-free. 284 g **222-539-3** reg. 38.00 **31.00**



S-waves

super straight

❖ **Ceramic Hairstyling Iron**
This 2.5 cm (1") W styling iron straightens, curls, flips, waves and smooths frizz with an all-in-one ergonomic design. Ceramic floating plates for versatile styles. 31 cm L. 2.74 metre swivel cord. Dual voltage for travel. **222-338-0** reg. 145.00 **129.00**



❖ **Volcanic Lava Ceramic Pro Spin 'n' Curl**
2.5 cm (1") pro automatic rotating curling device. Preset temperature controls with adjustable timers and LED screen display, for all hair types. 30 cm L. Dual voltage for travel. 3.35 metre swivel cord. **222-338-1** reg. 210.00 **189.00**



❖ **Advanced Ionic Compact Hair Dryer**
1875-watt ion generator emits negative ions to reduce drying time. Adjustable heat and air-speed settings. Lightweight and compact design. Removable filter. Includes air nozzle concentrator and diffuser. 1.9 metre cord. Use only as directed. **222-337-9** reg. 175.00 **159.00**



BioSilk® Silk Therapy® Leave-In Treatment
Tames frizz and flyaways and leaves hair silky smooth with reflective shine. For all hair types. 167 ml **222-387-5** reg. 48.00 **39.00**



CHI® ESSENTIALS make every day a healthy hair day

Nutrient rich hair care

Organic certified botanicals that include aloe vera, pomegranate, hibiscus and other nutrient-rich ingredients. All sulfate and PABA-free.



INFUSED WITH ALOE TO LOCK IN RICH MOISTURE

Moisturizing Conditioner

With vitamins A and B to help strengthen hair. Increases elasticity and helps smooth split ends and frizz.

355 ml **222-707-4**
reg. 26.00

24.49



HELPS PROTECT HAIR FROM THE DAMAGING HEAT FROM STYLING TOOLS

Thermal Protecting Spray

Silk molecules help lock in moisture and strengthen cuticles for frizz-free, shiny hair.

177 ml **222-707-6**
reg. 38.00

31.00



SAFE FOR COLOUR-TREATED HAIR

Replenishing Shampoo

With essential vitamins, minerals and amino acids.

355 ml **222-707-3**
reg. 26.00

24.49



DEEPLY PENETRATING-YET-LIGHTWEIGHT SERUM HELPS STRENGTHEN, PROTECT, MOISTURIZE AND SMOOTH

Repairing Serum

With vitamin A to help seal split ends, and rosemary to help boost volume and shine.

177 ml **222-707-5**
reg. 44.00

37.00



CHI® ESSENTIALS ammonia-free hair colour

Salon colour (without the salon)

Professional formulas with aloe, silk, olive oil and other natural ingredients.

Hair Color

100% grey coverage, vibrant colour and radiant shine with staying power. No parabens, no PABA, no phthalates, no sulfates. Includes:

- colourant, 60 ml
- developer, 73.9 ml
- shampoo, 30 ml
- conditioner, 30 ml
- serum, 15 ml
- gloves
- shower cap
- instructions

reg. 45.00

38.00
EACH KIT



Model is wearing 50-7R Light Red Auburn.

HEMP FOR HAIR

INTRODUCING ELASTINE HEMPHARMX SHAMPOO & CONDITIONER WITH COLD EXTRACTED HEMP OIL

It contains **omega 3-6-9**, known to help moisturize and nourish hair and prevent breakage for weightless hydration that delivers full volume.



COLD EXTRACTED HEMP OIL obtained in small concentrated quantities for premium quality



NEW! Elastine HempharmX Weightless Hydration
Vegan formulas. Both silicone-free. Shampoo is sulfate-free. Each, 400 ml
Shampoo **222-687-3**
Conditioner **222-687-4**
reg. 34.00
28.00 EACH



Dr. Groot Microbiome Scalp Fortifying Hair Thickening Shampoo
With coconut oil, it deep cleanses while helping moisturize dry scalp and hair. 400 ml **222-566-0**
reg. 49.00
41.00

Dr. Groot Microbiome Scalp Fortifying Exfoliating Shampoo
With rosemary extract, it gently exfoliates, helping to remove dirt and impurities. 250 ml **222-566-1**
reg. 49.00
41.00

Dr. Groot Microbiome Scalp Fortifying Serum Treatment
Upon contact with water, the concentrated liquid transforms into a creamy formula that moisturizes and helps support healthy hair roots. 200 ml **222-566-2**
reg. 49.00
41.00

Dr. Groot Microbiome Scalp Fortifying Massaging Tonic
With sophora root, an herb known to help support scalp health. Massage it in to help hair follicles absorb essential nutrients. 150 ml **222-566-3**
reg. 66.00
55.00



massage tip

ELASTINE BOTANICALS

Infused with revitalizing babassu seed oil, chamomile flower water, and lemon chestnut extract, and pH balanced, like healthy hair, it helps bring damaged hair back to life, adding dewy moisture for a smooth, natural-looking sheen.

NO • PARABENS • SILICONES
• MINERAL OIL • TRICLOCARBAN
• TRICLOSAN

DRY HAIR?

Cherry Blossom & Hyaluronic Acid Moisturizing

Moisturize dry, damaged hair with our hyaluronic acid-infused formula as thirsty strands drink it up. Each, 200 ml
Shampoo **222-566-4**
Conditioner **222-566-5**
reg. 8.00
6.29 EACH



WANT VOLUME?

Rosemary & Sea Salt Volumizing

With rosemary to help promote thicker and healthier hair, and sea salt to add body. Each, 200 ml
Conditioner **222-566-7**
Shampoo **222-566-6**
reg. 8.00
6.29 EACH



FRIZZY HAIR?

Avocado & Quinoa Anti-Frizz

With nourishing avocado oil and quinoa seed extract to help protect hair from damage and prevent breakage. Each, 200 ml
Shampoo **222-566-8**
Conditioner **222-567-0**
reg. 8.00
6.29 EACH



Smooth, shiny strands

Moroccan argan oil absorbs instantly, infusing hair with moisture and shine.

LEAVE-IN TREATMENT FOR ALL HAIR TYPES LEAVES HAIR LOOKING SOFTER AND HEALTHIER



360 Nourish Leave-In Treatment with Moroccan Argan Oil

Formulated with argan oil, provitamin B5 and vitamin E, it helps to nourish and smooth, dry, damaged hair. 60 ml
119-335-1
reg. 22.50
14.99



Ultimate Volume Boosting Spray

Formulated to build body at the root. 150 ml
445-637
reg. 14.00
9.99



Daily Shine Dry Ends Serum

Leaves hair soft, silky and smooth. 60 ml
243-496
reg. 16.00
10.49



Daily Shine 2-In-1 Shampoo & Conditioner

Bring back that healthy-looking, radiant shine and sleek finish to your hair. 350 ml
242-085
reg. 12.50
7.99

Elastine Propolithera

For nourished, healthy-looking hair.

A. Volumizing

Adds weightless volume and enhances texture to make hair look fuller, thicker and stronger. Each, 500 ml

Conditioner

222-244-9

Shampoo

222-244-8

reg. 26.00

22.49

EACH



B. Damage Repair

Helps repair and soften damaged hair so it appears smooth and manageable. Each, 500 ml

Shampoo 222-245-1

Conditioner 222-245-2

reg. 26.00

22.49 EACH

C. Hair Oil Serum

Helps to strengthen, protect, moisturize and smooth hair, and to add shine, while styling. 170 ml

222-245-4

reg. 26.00

22.49

D. Hair Mask

Enriched with nutrients to help deeply nourish hair and mend damaged split ends. 300 ml

222-245-3

reg. 26.00

22.49

REJUVENATING
HAIR CARE
INSPIRED
BY NATURE

A & B
BIG
500 ML

ELASTINE PROPOLITHERA STYLING BOOSTERS

Nourish dry, thin and weak hair with the goodness of honey, vitamin-enriched propolis extract and royal jelly.

HAIR CARE



NO SULFATES
OR PARABENS

intensely
moisturizing
Hydro
Emulsion

ultra-
nourishing
moisturizing
Nutri
Essence



Aloe Dual-Active Hair Serum

Packed with intensive hydration, it penetrates each strand with vitamins, minerals and other nutrients to bring damaged or chemically processed hair back to life. 100 ml total.

222-551-2

reg. 42.00

35.00

Curl Cream

Rich hydration for bouncy, defined curls. Reduces frizz for a smooth, healthy-looking shine. 150 ml

222-551-0

reg. 27.00

21.00

Volume Spray

Adds weightless volume and lustrous texture to thinning hair. 200 ml

222-551-3

reg. 27.00

21.00

Leave-In Conditioner

Hydrates and nourishes dry hair, infusing it with rich lustre. 240 ml

222-551-1

reg. 27.00

21.00

PERIOE

A. Tooth Balm Whitening Toothpaste - Lemon Basil Mint

Your entire mouth feels so refreshed. Fluoride/cruelty-free. 100 g **222-338-3**
reg. 12.00
10.00

B. Tooth Balm Whitening Toothpaste - Earl Grey Tea Mint

Enjoy your moment of zen. Fluoride/cruelty-free. 100 g **222-372-3**
reg. 12.00
10.00

C. Tooth Balm Whitening Toothpaste - Eucalyptus Mint

With activated charcoal. It's like a detox spa for your teeth. Fluoride/cruelty-free. 100 g **222-338-2**
reg. 12.00
10.00



WHITE ACTION

Vegan oral care to help keep your smile bright and your breath fresh. Two minty flavours and colour-coded easy-grip toothbrushes.

Toothpaste

Fluoride-free formula with baking soda cleans and whitens teeth while naturally refreshing breath. Each, 160 g
Strong Mint **222-694-6**
Original Mint **222-694-5**
reg. 5.99
4.19 EACH

Toothbrush

Gently and effectively removes plaque and surface stains with round-edge bristles. Easy-grip rubber pads. Medium bristles.
Green **222-711-7**
Blue **222-694-7**
reg. 3.00
2.49 EACH



PERIOE

GEL TOOTHPASTE IN A TUBE

Himalaya Pink Salt Toothpaste Tube
With aloe vera essence beads. Fluoride-free. Vegan. 100 g
A. Ice Mint 222-245-5
reg. 9.00
7.00

CREAM TOOTHPASTE IN AN EASY-TO-USE PUMP

Himalaya Pink Salt Pumping® Toothpaste
Over 2.5X as much toothpaste as in the tube. Fluoride-free. Vegan. 285 g
B. Ice Mint 222-245-6
C. Floral Mint 222-245-8
reg. 17.00
14.00 EACH



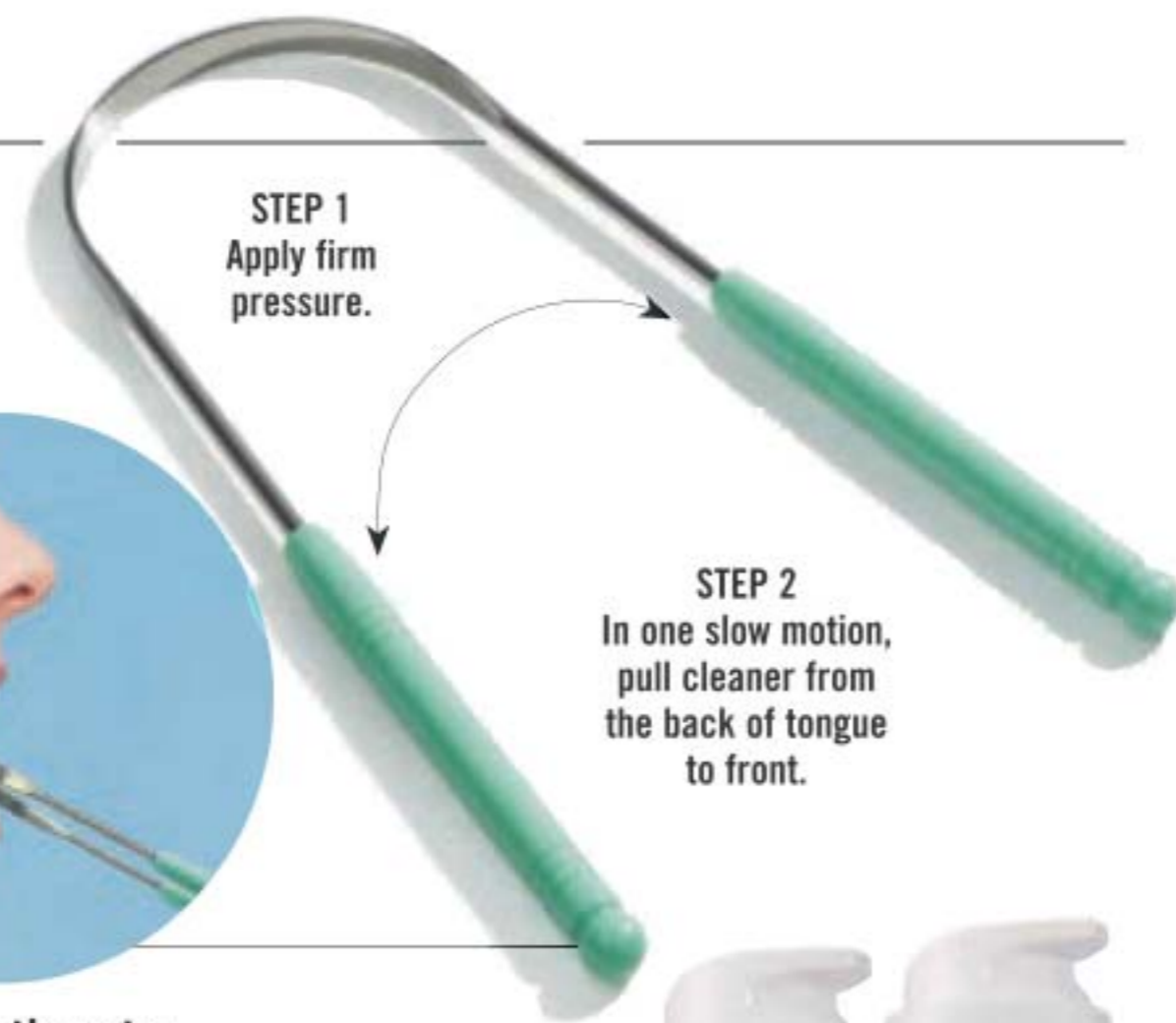
Royal Black Bee Honey Mint Toothpaste
Fluoride-free. With royal jelly and Australian propolis extract. With regular brushing this toothpaste helps fight plaque and whiten teeth. 100 g
222-555-7
reg. 9.00
7.00

honey mint flavour

NEW

Stainless Steel Tongue Cleaner

Hand wash. 13 x 5 cm. Stainless steel/polypropylene. 222-468-8
8.99
LIMITED QUANTITIES



Thera-White 2-in-1 Whitening Toothpaste

Booster gel activates whitening toothpaste to remove stains and whiten teeth faster and more effectively than with either alone. Fluoride-free. 140 g reg. 42.00
34.99 EACH



Pink Mild Mint
222-371-9



Charcoal Cool Mint
with activated charcoal
222-431-6

INNOVATIVE DUAL SYSTEM!

Booster gel accelerates whitening power

Whitening toothpaste with hydrogen peroxide



Thera-White Instant Whitening Gel Strip Kit

Use 30 minutes a day. Teeth look whiter in one week. Special air-tight wrap conforms to contours of teeth and seals in hydrogen-peroxide gel to protect saliva from diluting the gel. Allows whitening while talking or moving around. 14 strips for 7-day use. Gel, 5 ml 222-372-0
reg. 42.00
34.99 THE KIT

2X MORE EFFECTIVE THAN GEL ALONE



Whitening Essentials Fluoride Toothpaste Original Cool Mint
Anti-cavity formula helps to whiten teeth and to remove surface stains. 156 g 222-710-1
reg. 13.00
11.00



cool mint flavour

SOFT
bristles

fresh green mint flavour

MEDIUM
bristles

Whitening Essentials Fluoride Toothpaste with Charcoal White - Fresh Mint
With fluoride to help prevent cavities. With green mint for a nature-fresh feeling. 156 g 222-710-2
reg. 13.00
11.00

Whitening Essentials Medium Charcoal Toothbrush
Uniquely shaped brush. With medium bristles, infused with activated charcoal to help your teeth look clean and bright. 221-905-0
reg. 9.00
6.50

Whitening Essentials Soft Original Toothbrush
Uniquely shaped brush. Designed for maximum coverage over teeth as soft bristles with fine tips sweep between teeth to keep them healthy. 221-904-9
reg. 9.00
6.50

Essentials for kids

STRAWBERRY FLAVOUR!



Perioe Kids Strawberry Pumping® Toothpaste
Fluoride-free formula suitable for kids under age 5. 160 g
222-337-7
reg. 24.00
19.99

Babience Kids Moisturizer
Moisturizing body lotion with shea butter and olive oil infuses dry skin with intense moisture and leaves it feeling nourished. Dermatologically-tested. No parabens. Peach scent. 380 ml
222-337-5
reg. 28.00
22.99



Babience Kids Hair & Body Wash
2-in-1 wash with shea butter and olive oil. Cleanses while it conditions. Rich, creamy foam leaves your little one's hair feeling soft and smooth. Dermatologically-tested. No sulfates or dyes. Peach scent. 380 ml
222-337-4
reg. 24.00
19.99



Babience Baby Wipes
Gentle and safe. Dermatologically-tested. Free of alcohol, perfume and parabens. pH balanced to match baby's skin. 98% pure water. 70 sheets.
222-444-5
reg. 9.00
6.99



BODY CARE



roll out knots in sore, aching muscles with ease

GENTLY ROLL IN A BACK-AND-FORTH MOTION, APPLYING MORE PRESSURE FOR A DEEPER, MORE INVIGORATING MASSAGE

Rollerball Massager
Place in the freezer to help soothe inflammation. 6 x 6 x 5.5 cm. Polypropylene/resin. For adult use only.
222-620-1
10.99
LIMITED QUANTITIES



NEW! Body Exfoliation Gloves
One size fits most. Polyester. Hand wash, dry flat.
222-914-0
4.99 A PAIR
LIMITED QUANTITIES

Pink Popcorn Socks
Low-cut socks with anti-slip grips. Fits shoe sizes 6-10. Polyester/elastane. Machine wash and dry.
222-461-9
6.00 A PAIR
LIMITED QUANTITIES



ULTRA-SOFT & NUBBY



Nourishing hand care

CORIANDER AND OLIVE TREE

Aromatic and woody

A delicate blend of coriander seeds and olive wood.

Hand Cream	Hand Lotion	Hand Soap
60 ml	300 ml	400 ml
221-939-4	221-939-0	222-549-1
reg. 12.00	reg. 24.00	reg. 24.00
10.00	20.00	20.00

- Authentic and ethical harvesting
- No animal testing or animal ingredients

- Created in Canada
- Biodegradable soap formulas*

*As per OECD 301D test.

SEA SALT AND AMALFI LEMON

Fresh and tangy
Sparkling notes of Amalfi lemon with a hint of sea salt.

Hand Soap	Hand Soap Refill
400 ml	600 ml
222-550-5	221-938-7
reg. 24.00	reg. 26.00
20.00	22.00
Hand Lotion	
300 ml	
221-939-1	
reg. 24.00	
20.00	



BATH & BODY





VERBENA AND YUZU

Sparkling and fruity
The uplifting freshness of verbena and sweet yuzu.

Hand Cream 60 ml 222-390-1 reg. 12.00 10.00	Hand Lotion 300 ml 222-389-8 reg. 24.00 20.00
--	--



Nourishing hand care

GRAPEFRUIT AND RHUBARB

Bright and illuminating
Zesty grapefruit combined with refreshing rhubarb.

Hand Lotion 300 ml 221-939-2 reg. 24.00 20.00	Hand Soap 400 ml 222-550-6 reg. 24.00 20.00	Hand Cream 60 ml 221-939-6 reg. 12.00 10.00
--	--	--

- Authentic and ethical harvesting
- No animal testing or animal ingredients

- Created in Canada
- Biodegradable soap formulas*

*As per OECD 301D test.



#NAKEDPROOF

**End of the Line
Stretch Mark
Minimizing Lotion**
Shea butter and
pomegranate extract
stimulate natural
elastin production so
stretch marks appear
reduced. 200 ml
220-649-2
reg. 30.00
18.99



**Affirm Yourself
Firming Body Cream**
Caffeine complex
stimulates natural
collagen production
to visibly banish
crepey-looking skin
so skin looks more
toned. 200 ml
220-649-0
reg. 30.00
18.99



**Smooth Moves
Anti-Cellulite
Cooling Gel**
L-carnitine and
chai hu help target
fat cells for visibly
smoother-looking
skin and improved
texture. 200 ml
220-649-1
reg. 30.00
18.99



SENSES

SPARKLING GRAPEFRUIT & ORANGE BLOSSOM

Body Lotion 236 ml 221-935-6 reg. 24.00 19.99	Body Mist 236 ml 221-935-5 reg. 25.50 20.99	Shower Gel 295 ml 221-935-7 reg. 24.00 19.99
--	--	---

COZY VANILLA & COCONUT

Shower Gel 295 ml 221-936-0 reg. 24.00 19.99	Body Mist 236 ml 221-935-8 reg. 25.50 20.99	Body Lotion 236 ml 221-935-9 reg. 24.00 19.99
---	--	--



BATH & BODY



FRESH BERGAMOT & WILD MINT

Body Mist 236 ml 221-935-2 reg. 25.50 20.99
Shower Gel 295 ml 221-935-4 reg. 24.00 19.99
Body Lotion 236 ml 221-935-3 reg. 24.00 19.99



Skin-softening oils

Formulated with nourishing vitamins and fatty acids to help your skin look gorgeous and glowing!



**STAY UP-TO-DATE
ON THE LATEST TRENDS!**
Sign up to receive emails at avon.ca



Original Bath Oil Spray
Locks in moisture.
150 ml
220-916-7
reg. 20.00
11.99



Original Oil-Infused Foaming Body Wash
Changes from oil to foam.
250 ml
118-097-6
reg. 18.00
10.49



Original Gelled Body Oil
Dries to a silky finish. 200 ml
107-681-4
reg. 19.00
10.99

SKIN SO SOFT with our signature oils for touchably soft skin



Original Shower Gel
Gently cleanses and hydrates.
150 ml
107-681-0
reg. 12.00
5.99



Original Creamy Body Wash
Quenches dry skin.
350 ml
107-682-8
reg. 16.00
8.49



Original Body Lotion
Layers on nourishing moisture.
350 ml
107-594-7
reg. 16.00
8.99



Soft & Sensual Body Lotion
Layers on nourishing moisture.
350 ml
107-757-5
reg. 16.00
8.99



Soft & Sensual Shower Gel
Gently cleanses and hydrates.
150 ml
107-743-5
reg. 12.00
5.99



Radiant Moisture Shower Gel
Gently cleanses and hydrates.
150 ml
107-736-0
reg. 12.00
5.99



Soft & Sensual Oil-Infused Foaming Body Wash
Changes from oil to foam.
250 ml
118-097-7
reg. 18.00
10.49



Soft & Sensual Gelled Body Oil
Dries to a silky finish.
200 ml
111-777-4
reg. 19.00
10.99



Radiant Moisture Creamy Body Wash
Quenches dry skin.
350 ml
107-727-6
reg. 16.00
8.49



SKIN SO SOFT

Comforting Shea Body Butter
200 ml
121-648-6
reg. 13.00
8.49



Comforting Shea Body Lotion
350 ml
121-648-8
reg. 16.00
10.99



Comforting Shea Creamy Body Wash
350 ml
121-648-9
reg. 16.00
10.99



Fresh & Smooth Moisturizing Shave Oil
Oil transforms to a creamy lather on wet skin. 150 ml
118-098-0
reg. 19.00
11.49



Fresh & Smooth Sensitive Skin Facial Hair Removal Cream
With meadowfoam oil and aloe. Fragrance-free. 30 ml
107-728-2
reg. 14.00
6.99



Fresh & Smooth Sensitive Skin Body Hair Removal Cream
With meadowfoam oil and aloe. Fragrance-free. 125 ml
107-728-5
reg. 14.00
6.99

SKIN SO SOFT take pampering to the next level

Supreme Nourishment Enriching Coconut Oil Oil Wash
Gently cleanses without stripping natural oils. 350 ml
221-206-3
reg. 24.00
13.99



Supreme Nourishment Enriching Coconut Oil Milk Lotion
Ultra-light luscious lotion instantly hydrates skin. 350 ml
221-206-4
reg. 24.00
13.99



Supreme Nourishment Enriching Coconut Oil Body Soufflé
Airy, coconut water-infused soufflé. 200 ml
221-206-6
reg. 24.00
13.99



Supreme Nourishment Triple Phase Body Oil
With 3 precious oils: argan, babassu and macadamia to nourish, protect and hydrate. Shake before use. 180 ml
107-683-0
reg. 28.00
16.99



Radiant Glow Illuminating Dry Oil Mist
A unique blend of five nourishing oils for glistening skin. 150 ml
220-113-7
reg. 19.00
10.99



Radiant Glow Skin Luminosity Polish
Four nourishing oils and vitamin E. 200 g
220-068-8
reg. 20.00
11.49



FOOT WORKS essentials to pamper your feet!



Lavender 3-in-1 Pampering Oil
Rough, dry feet and cuticles feel smooth and rejuvenated. Lavender scented. 60 ml
117-060-4
reg. 10.00
5.99



Lavender Softening Balm
With vitamin E, jojoba oil, cocoa butter and shea butter. Lavender scented. 50 g
116-648-4
reg. 10.00
5.99



Arthritis Achy Foot & Muscle Cream
Contains soothing glucosamine and chondroitin. 75 ml
117-059-3
reg. 10.00
5.99



Antifungal Spray for Athlete's Foot
Helps relieve itching and cracking. 100 ml
117-955-3
reg. 13.00
7.99



Deodorizing Spray
Can also be used in footwear. 100 g
116-648-6
reg. 13.00
8.49



Intensive Callus Cream
Infused with natural aloe, rice bran oil and peppermint. 100 ml
117-663-5
reg. 13.00
7.99



Deep Moisturizing Cream
Rich cream with 24-hour moisturization. Formulated with cocoa butter. 75 ml
116-648-2
reg. 10.00
5.99



Intensive Moisture Foot Cream
Softens, hydrates and conditions rough, dry skin. 75 ml
116-647-9
reg. 10.00
5.99



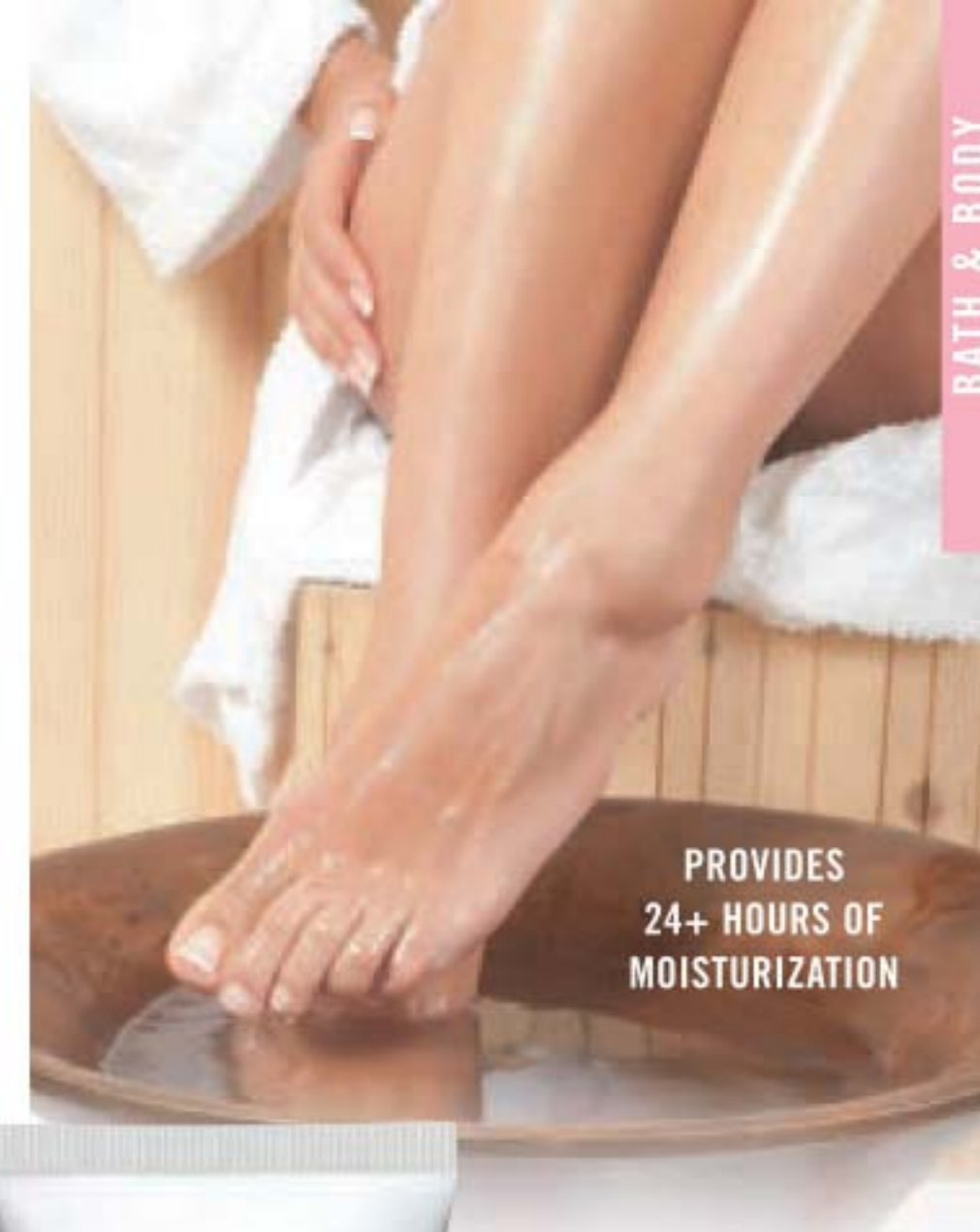
Overnight Renewing Cream
Formulated with jojoba oil and green tea extract. 100 ml
116-647-7
reg. 13.00
7.99

FOOT WORKS

Pedicure Kit
Metal/man-made materials. Case, 9 x 12 cm.
Includes:
• Cuticle pusher
• Nail scissors
• Nail file
• Toenail clipper
• Nail clipper
441-304
reg. 16.00
9.99
THE KIT



Pedicure Tool
Four features in one tool. Plastic. 8 x 4 x 4 cm
Includes:
• Fine grain file
• Metal file
• Brush
• Pumice
102-612-1
reg. 15.00
9.99
LIMITED QUANTITIES



PROVIDES 24+ HOURS OF MOISTURIZATION



TRANSFORMS THE LOOK AND FEEL OF DRY, CRACKED HEELS

Cracked Heel Cream
Helps to soften calluses. 75 ml
117-059-2
reg. 10.00

LIMITED TIME OFFER
4.99

DAILY ESSENTIALS for pampered lips and skin

Moisture Therapy Lip Balm

Each, 4 g

Daily Defense

222-571-5

Calming Relief

222-571-4

reg. 3.00

1.99 EACH



Lip Balm

Each, 4 g

Avon Sun+ Lip Balm SPF 15

UVA/UVB protection.

222-563-5

Dew Kiss Lip Dew

221-971-2

Moisture Therapy Intensive Healing & Repair Moisturizing Lip Treatment Balm

221-985-3

Flavor Savers Lip Balm

Strawberry 221-971-7

Vanilla 221-971-9

Melon 221-971-8

reg. 3.00

1.99 EACH



Veilment Care Moisturizing Bar Soap

Plant-based cleanser, derived from olive oil and infused with coconut oil, moisturizes as it gently cleanses, leaving skin beautifully soft and delicately fragranced. 80 g

222-694-9

reg. 3.50

2.79

creamy,
comforting
coconut
scent



Beauty Soap with Aloe & Vitamin E

Soothing aloe leaves skin feeling refreshed. 90 g

106-623

reg. 3.00

1.99
EACH

gentle enough to
use on your face



Skin So Soft

Hand Cream

Each, 100 ml

Original Replenishing

107-728-6

Radiant Moisture

Replenishing

107-728-7

Soft & Sensual

Replenishing

114-351-6

reg. 7.00

Moisture

Therapy

Hand Cream

Each, 125 ml

Daily Skin Defense

101-614-9

Calming Relief

101-614-8

Intensive Healing

& Repair 101-615-3

reg. 9.00

Avon Care

Silicone Glove

Protective

Hand Cream

100 ml 288-210

reg. 9.00

3.99 EACH





REFRESHING SCENTS
AND A RICH,
CREAMY LATHER

Rejuvenate your skin!

Conditioning shower gels in fresh, luxurious scents gently cleanse, leaving skin feeling soft and delightfully scented.

Hydrating Shower Gel
Each, 150 ml

- Pomegranate & Mango **108-471-4**
- Cucumber & Melon **108-427-5**
- Cherry Blossom **108-425-2**
- Vanilla **108-470-6**
reg. 9.00
5.99 EACH



Wash away dirt & grime

**BACK BY
POPULAR
DEMAND!**

LEAVES HANDS
SOFT, CLEANSED AND
LIGHTLY SCENTED

Hand Soap
Each, 240 ml

Vanilla
Comforting vanilla
and brown sugar.
113-538-7

**Cucumber
& Melon**
Crisp cucumber
and juicy melon.
113-538-8
reg. 14.00
8.39 EACH

Antibacterial Hand Gel
Mild and gentle to skin.
No water needed. Each, 75 ml

Vanilla
222-568-0

Cucumber & Melon
222-568-1
reg. 10.00
5.99 EACH

**KILLS 99.99%
OF BACTERIA**

Clean hands on-the-go!



THE FACE SHOP

⊛ RICE WATER BRIGHT FOAMING CLEANSER

Cleanses and moisturizes in one.
• Rice water and soapwort extract
leave skin clear and bright.

300 ml 221-900-0

19.00 or...

ONLY 9.99

WITH EVERY 15.00

PURCHASE FROM

THIS BROCHURE

(EXCLUDING RICE WATER
BRIGHT FOAMING CLEANSER)



creamy texture
lathers up into
a rich foam



large 300 ml size

Package labels
may vary.

BUY NOW! BROCHURE IS VALID FOR A LIMITED TIME. SEE BELOW.

Campaign 5, 2021

The advertised prices featured in this brochure (errors and omissions excluded) are Avon's retail prices for this current campaign and are applicable to online or Representative channel purchases only. [Your] Representative[s] set[s] their own selling price depending on the channel of purchase. All prices exclude applicable taxes. All prices and promotions (excluding delivery) featured in this brochure are valid for orders placed during this campaign only.



See our commitment at:
avongivesback.ca



Member of The Canadian
Direct Sellers Association

KINDLY SUBMIT YOUR ORDER BY: _____



@MyAvonCanada

1-800-265-2866
avon.ca

100% SATISFACTION GUARANTEED

If you are not happy with any purchase,
return the product through
the same channel of purchase.

If you purchased online, return the product
to Avon within 30 calendar days from the date
stated on your receipt for your money back.

**If you purchased from an Avon Independent
Sales Representative**, products must be
returned to your Representative along with
your receipt within 30 calendar days from the
delivery date stated for a replacement,
exchange or your money back.

Certain restrictions apply. Details of the Return
Policy can be found on your receipt or at avon.ca.

FSC (IND.) 4431981
FSC (10) 4432001